

FAST LANE

WORLDWIDE LAB INFRASTRUCTURE

Remote and Hands-On Lab Experiences



Training that
produces the
results you
need



Achieve goals
that matter to
your
organization

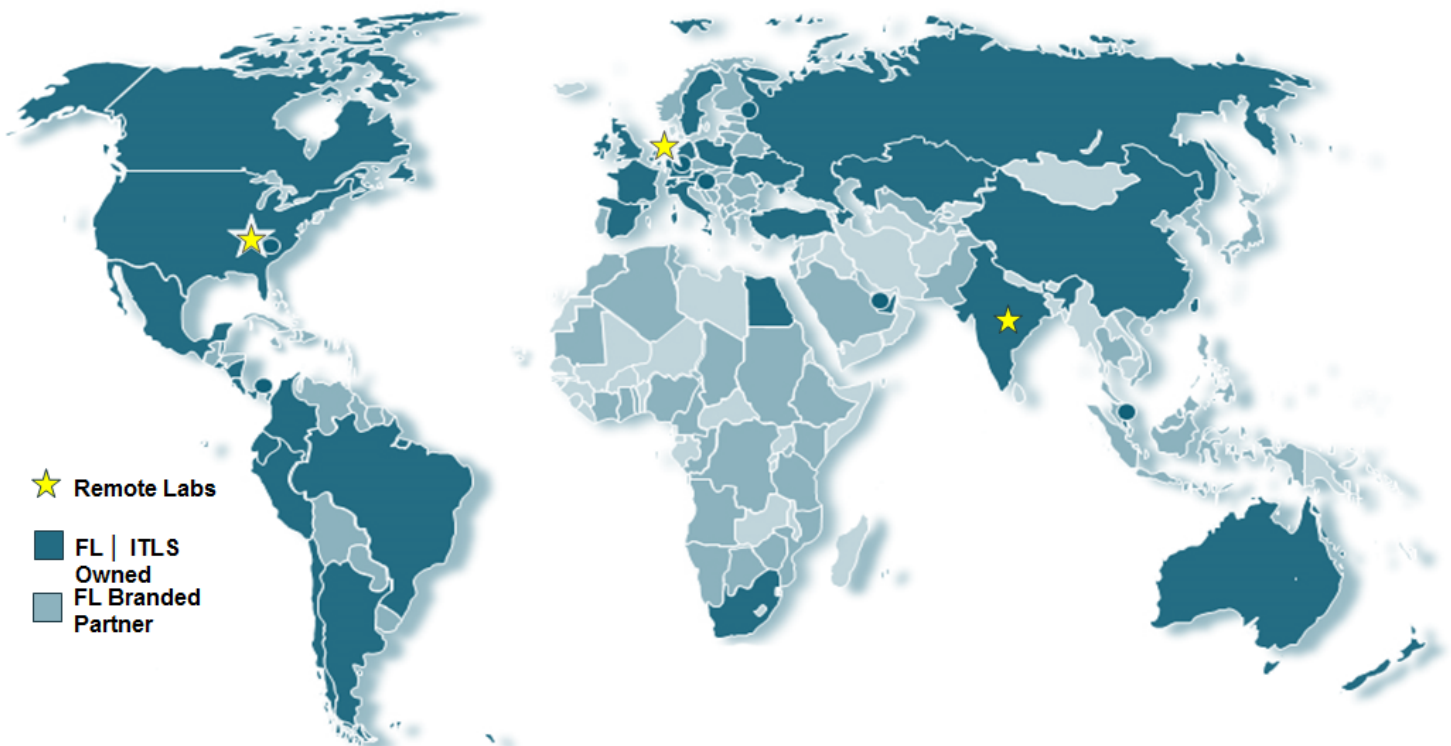


**Globally
accessible**
remote labs

FAST LANE LABS

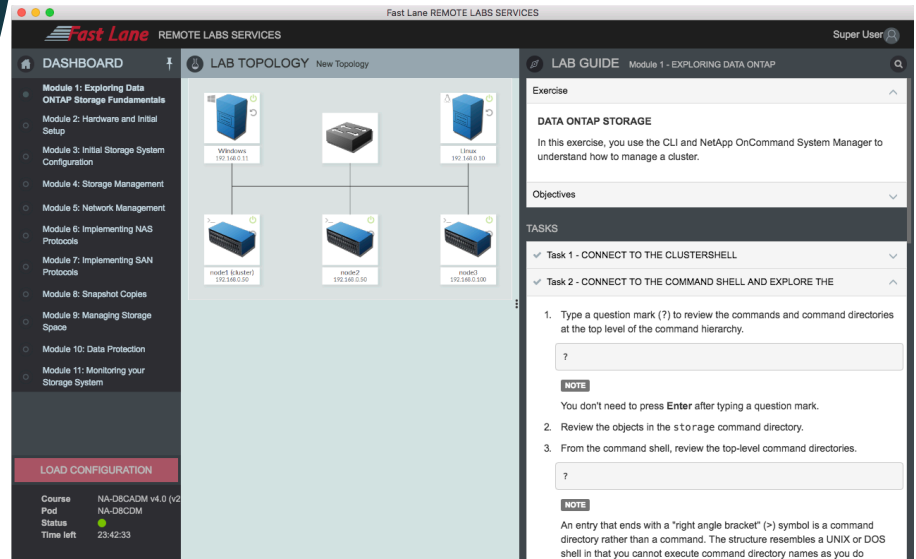
WORLDWIDE DATA CENTER

- Fast Lane provides a unique lab environment for Cisco, Microsoft, NetApp, VMware, IBM, Symantec, Veritas, Palo Alto, and other vendors
- We provide more than 550 high-end remote labs available worldwide, 24-hours per day, with dedicated live support
- Up to 8,000 students can work simultaneously on this hardware infrastructure during training
- Most of our labs are exercise-based, allowing you to fully control the order in which participants complete the lab exercises



REMOTE LAB 3.0 (RL3)

- Fully virtualized multi-vendor labs
- Full student lab guide integration
- Full device control
- Exercise-based
- 5,500 students in parallel
- Self-paced support
- State-of-the-art user interface and work flows
- Customizable user interface



CUSTOMER REFERENCE: REMOTE LAB SETUP FOR GE



- Fully virtualized, hosted training solution
- Hosted in 3 geolocations
- 500 students in parallel
- 24x7 lab access from anywhere
- Browser-based
- Students access a pre-installed lab environment
- Instructors can control and monitor students' lab environments
- Automatic lab setup and tear down

CISCO UNIFIED ACCESS AND WIRELESS LABS

Advanced Cisco Unified Access Lab

- Cisco Prime Infrastructure (PI)
- Cisco Identity Service Engines (ISE)
- Cisco Mobility Service Engines (MSE)
- Cisco CleanAir Access Points (2600, 3600, 2700, and 3700 Series)
- Cisco Converged Access (Catalyst 3650 and Catalyst 3850 Series)
- Wireless Security and Spectrum Intelligence (WSSI)
- Site Survey Tools (Fluke AirMagnet and Ekahau)
- FlexConnect and OfficeExtend (OEAP)

Advanced Cisco Unified Wireless Networking Labs

- Cisco 2504 Wireless LAN Controller
- Cisco 5508 Wireless LAN Controller
- Cisco Aironet 1142, 1262, 3502 Access Points
- Cisco NAC Appliance
- Cisco 3300 Series Mobility Services Engine
- Cisco Wireless Control System (WCS)
- Cisco Secure Access Control System (ACS)



CISCO COLLABORATION LABS

Cisco Voice / Unified Communications Manager 10.x/11/12 Labs

- Cisco Unified Communications Manager
- Cisco Unity Connection
- Cisco Unified Communications IM and Presence
- Cisco Prime Collaboration Provisioning
- Cisco Jabber
- Cisco 2900 Series Integrated Services Router
- Integration with Microsoft Active Directory and Exchange

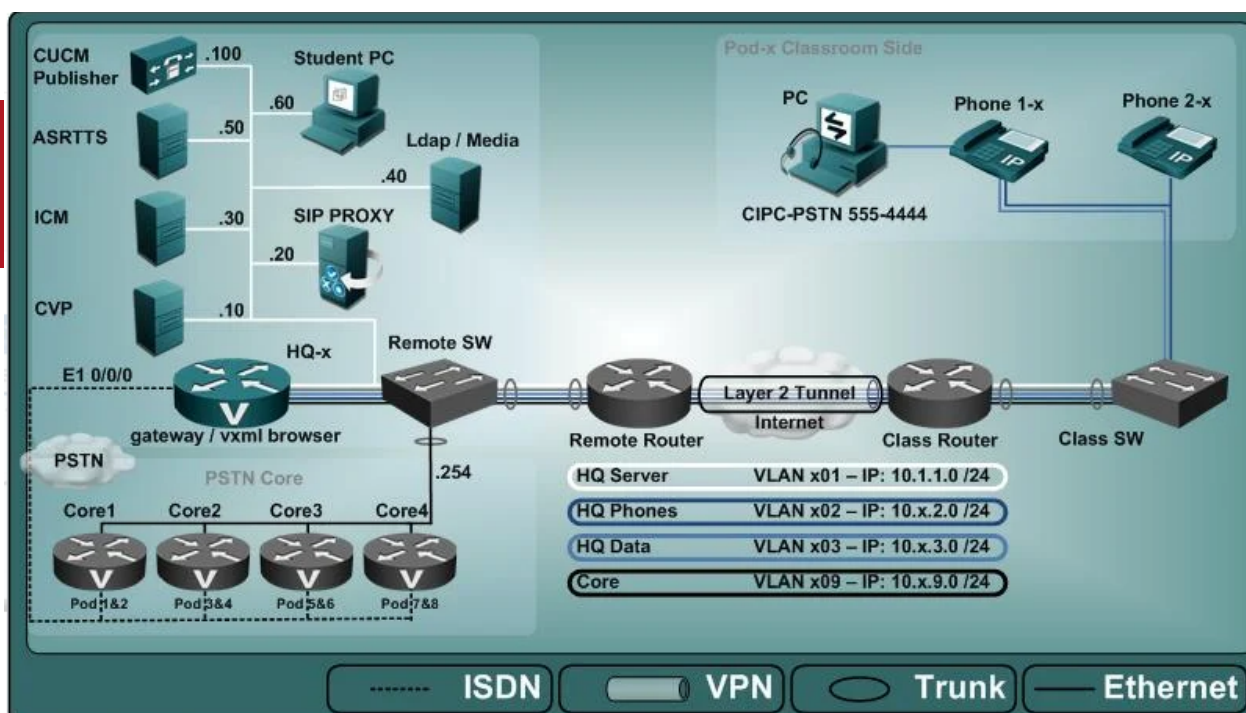
Cisco Customer Collaboration Labs

- Cisco MediaSense
- Cisco Unified Contact Center Enterprise / Express
- Cisco Unified Customer Voice Portal

Cisco Video Labs

- Cisco TelePresence Video Communication Server with TelePresence Management Suite
- Cisco TelePresence MCU with IP/ISDN Gateway and TelePresence Server
- Cisco Expressway Series
- Cisco TelePresence Conductor
- Cisco SX20, CTS, DX650, and Edge 340 DMP Endpoints

Cisco Customer Voice Portal Lab Topology



CISCO SECURITY LABS

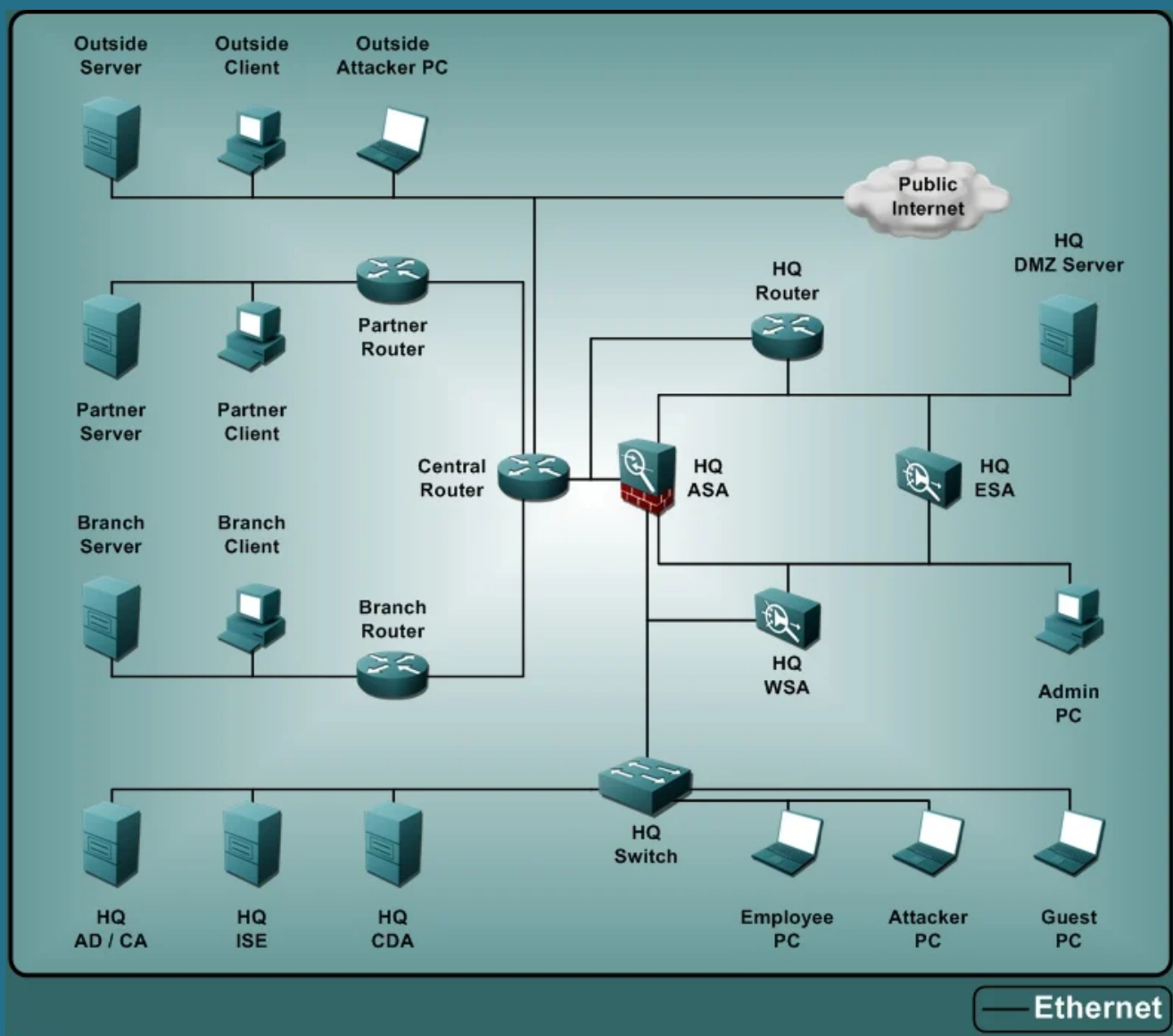
- **Advanced Cisco CCNP Security Labs**

- Secure Access
- Edge Network Security
- Secure Mobility
- Threat Control

- **Cisco Identity Services Engine (ISE) Lab**

- **Cisco Security Manager Lab**

Cisco Edge Network Security Lab Topology



CISCO DATA CENTER AND VIRTUALIZATION LABS

Cisco Nexus Labs

- Cisco Nexus 7000 Switches
- Cisco Nexus 5600 Switches
- Cisco Nexus 2000 Fabric Extenders
- VMware ESX Server incl. Cisco Nexus 1000V

Cisco Unified Computing System (UCS) Labs

- Cisco UCS 5100 Blade Server Chassis
- Cisco UCS B-Series Blade Servers
- Cisco UCS C-Series Rack Servers
- Cisco UCS 6200 Fabric Interconnects
- Cisco UCS Manager, UCS Central, UCS Director
- Cisco Nexus 2000 Fabric Extenders
- Cisco Nexus 5000 Switches
- Cisco MDS 9000 Multilayer Fabric Switches
- NetApp FAS3220 Series Cluster Storage

Cisco Application Centric Infrastructure (ACI) Labs

- Cisco Nexus 9000 Switches
- Cisco Application Policy Infrastructure Controller (APIC)

Cisco SAN Labs

- Cisco MDS 9710 Multilayer Director
- Cisco MDS 9250i/9222i Multiservice Switches
- Cisco MDS 9148 Multilayer Fabric Switches
- Cisco Prime Data Center Network Manager SAN



MULTI-VENDOR DATA CENTER LABS

FlexPod Lab

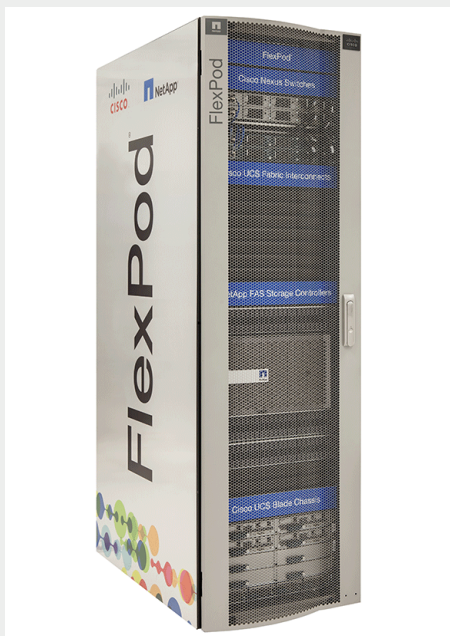
- Cisco Unified Computing System (UCS)
- Cisco UCS Director
- Cisco Nexus Switches
- Redundant NetApp FAS3220/FAS6240 HA Pairs
- NetApp 1600 Series 10G Interconnect Switches
- VMware vSphere

Multivendor Interoperability SAN Lab

- Brocade 6510, 5100, 4100, and 300 Series Switches
- Cisco MDS 9100 Series Multilayer Fabric Switch
- NetApp and EMC Storage Systems
- JBOD
- Windows FC Server
- Windows Management Server Including Brocade Network Advisor

VersaStack Lab

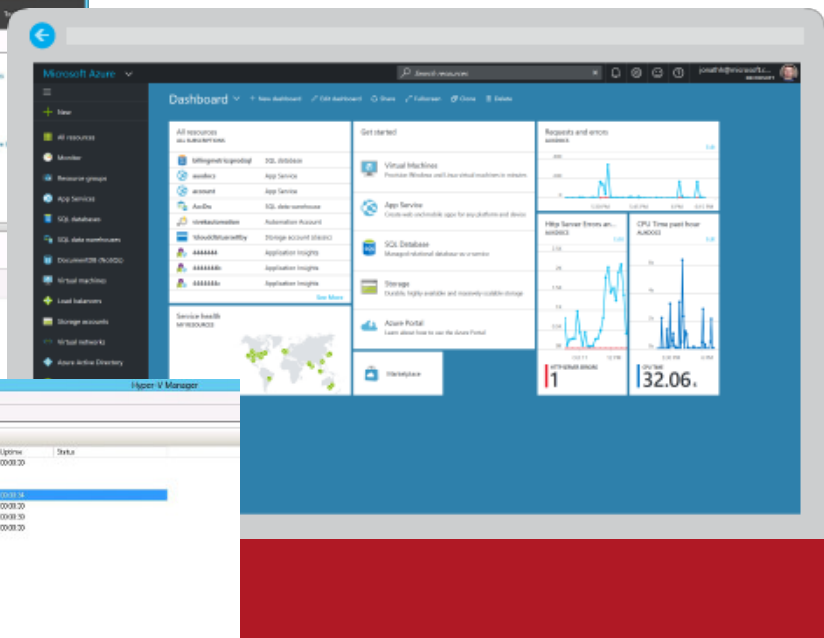
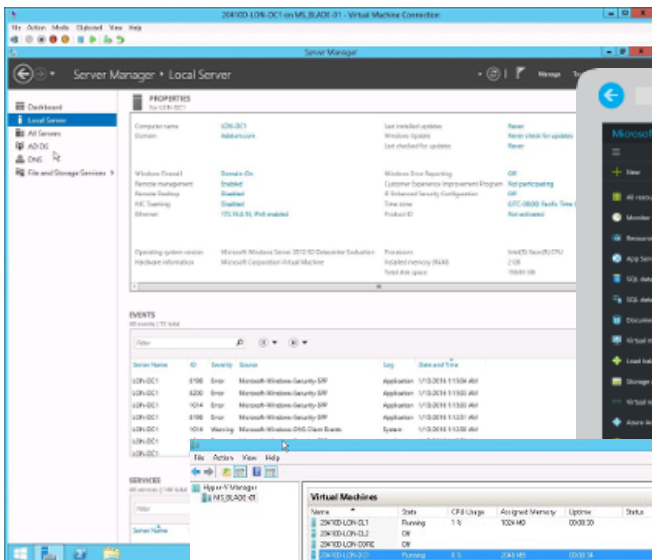
- Cisco Unified Computing System (UCS)
- Cisco Nexus 9000 Switches
- Cisco MDS 9100 Series Multilayer Fabric Switches
- IBM Storwize V7000 Unified Storage System



MICROSOFT LABS

Microsoft Product and Solution Training Labs

- Azure
- Windows Server
- System Center
- SQL Server
- Exchange Server
- Skype for Business
- SharePoint Server
- SQL Server
- Microsoft 365
- Windows



NETAPP LABS

FlexPod Multivendor Labs

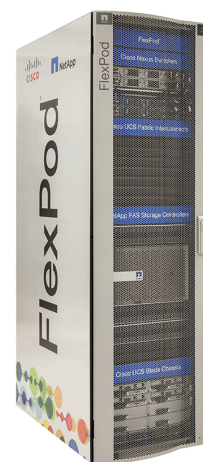
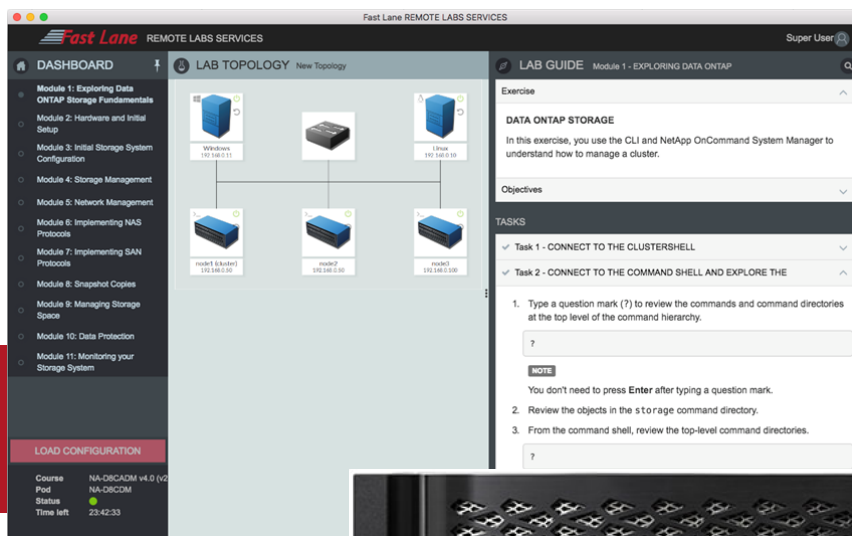
- Redundant NetApp FAS3220/FAS6240 HA Pairs
- NetApp 1600 Series 10G Interconnect Switches
- Cisco Unified Computing System (UCS)
- Cisco UCS Director
- Cisco Nexus Switches
- VMware vSphere

NetApp SAN Labs

- NetApp FAS3200 Series
- Flash and Cluster-ready

NetApp Clustered Data ONTAP Lab & Storage Basic Labs

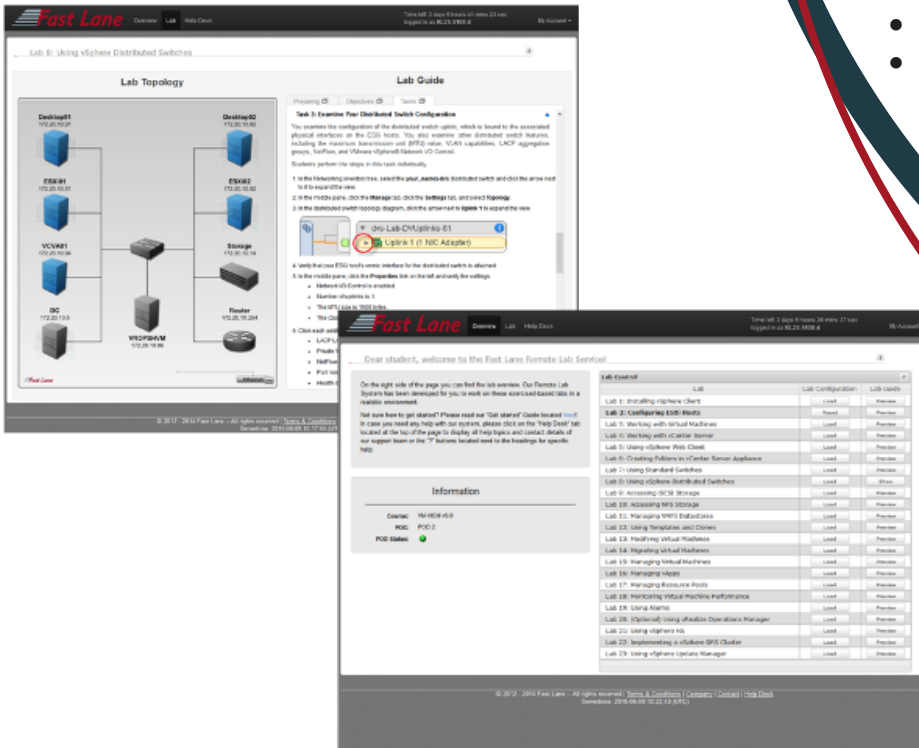
- Exercise-based self-paced labs for NetApp basic training fully virtualized based on the FlexPod infrastructure



VMWARE DATA CENTER, CLOUD, & VIRTUALIZATION LABS

Fully Virtualized Product and Solution Labs

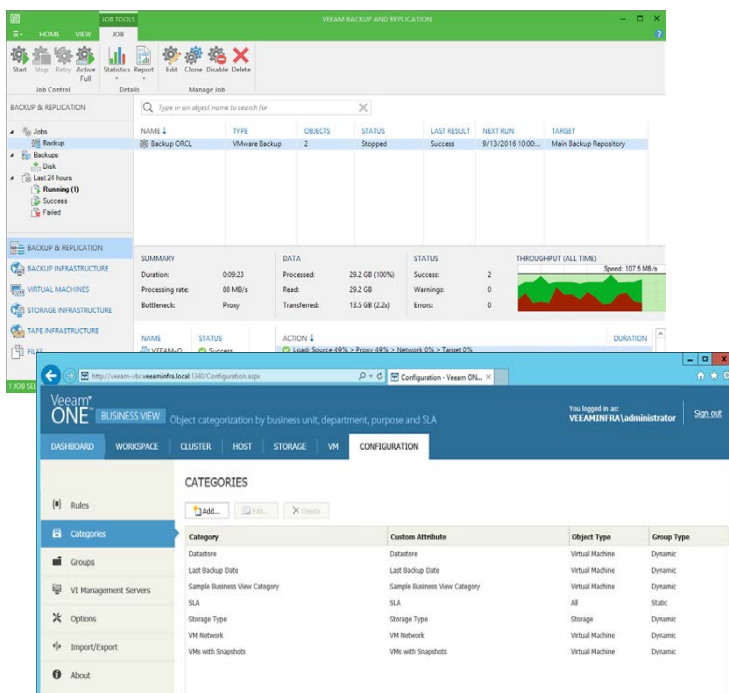
- VMware vSphere
- Enterprise Management
- VMware Horizon & View
- VMware vCloud



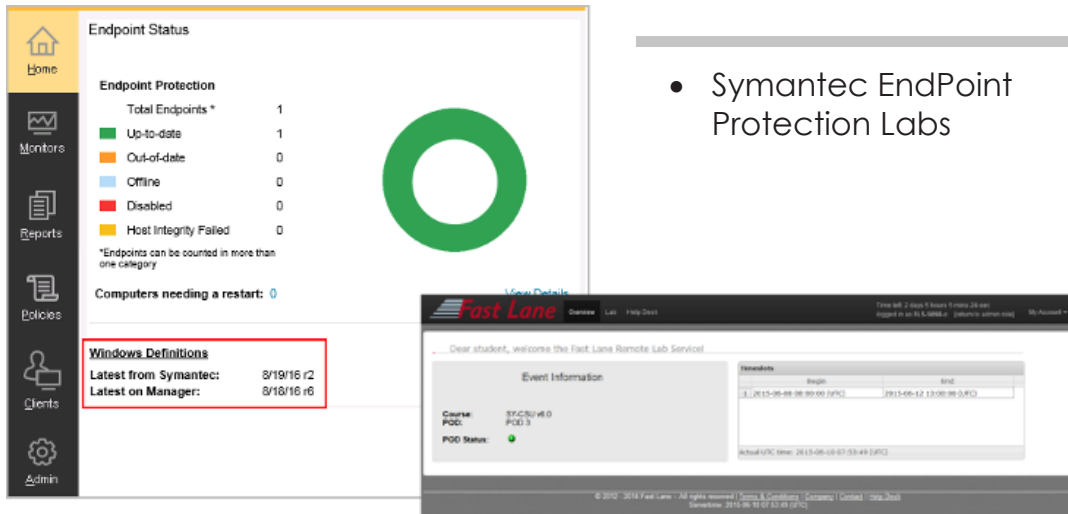
VEEAM LABS

Veeam Lab Features

- Veeam Backup & Replication
- Veeam Backup Enterprise Manager
- Veeam ONE
- Hypervisors: HyperV and VMware
- Applications: Active Directory, Exchange, Sharepoint, Oracle, Microsoft SQL



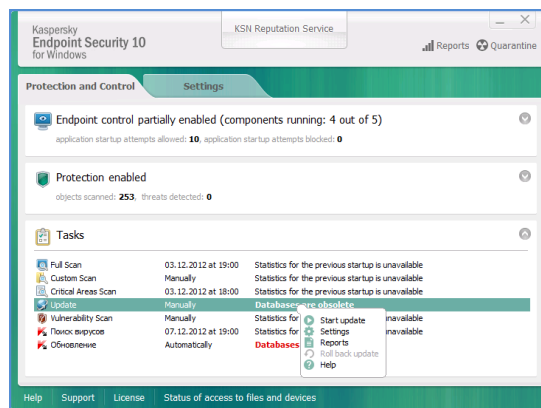
SYMANTEC LABS



- Symantec EndPoint Protection Labs

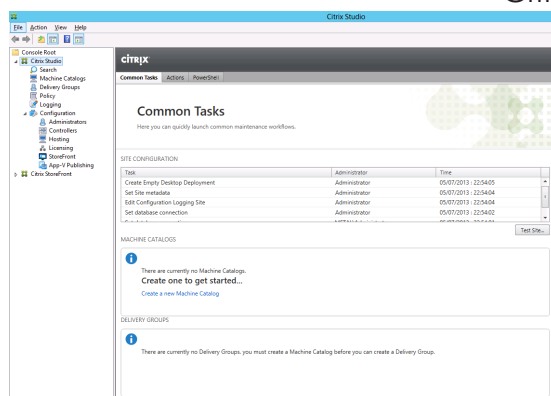
KASPERSKY LABS

- Kaspersky Endpoint Security and Management. Small Business (019.10)
- Kaspersky Endpoint Security and Management. Fundamentals and Advanced Skills (002.10+302.10)



CITRIX LABS

- Citrix XenDesktop / XenApp
- Citrix NetScaler



JUNIPER ADVANCED TECHNOLOGY LABS

- EX Series Switches
- J Series Routers
- SRX Series Firewall
- SSG Series Firewall
- MAG Series Junos Pulse SSL VPN Gateways
- SA Series SSL-VPN-Appliance
- Junos Space Network Management Platform



PALO ALTO LABS

- PAN-OS 7.0
- Virtualized Next Generation - Firewall
- App ID
- User ID
- URL Filtering
- IPS
- SSL Description
- NAT
- VPN
- High Availability



LAB REFERENCES AND LINKS

www.fastlaneus.com/remotelabs

Displays all available labs

https://www.fastlane.live/us_en/remote-labs

Lab rentals

SERVICES TEAM

CONTACT LIST AND INFO

LARA MEDFORD

Managed Services Architect

+1 919.674.3199

lara.medford@fastlaneus.com

Skype ID: lara.medford

KIMBERLY WATSON

Vice President, Services

+1 919.448.8201

kimberly.watson@fastlaneus.com

Skype ID: kimberly.s.watson

DAN O'BRIEN

President, Americas & Canada

+1 919.674.3197

dan.obrien@fastlaneus.com

Skype ID: dan.obrien2010

FAST LANE WEBSITE

www.fastlaneus.com

