

# RIGGING GEAR INSPECTION

## FIELD REFERENCE

### Removal Criteria for Wire Rope and Wire Rope Slings

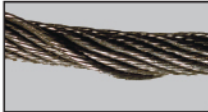
Reference the ASME B30.30 and ASME B30.9 Standards



Kinks, crushing, or unstranding



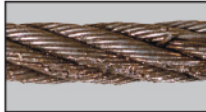
Birdcaging



Distorted rope structure



Broken wires (check standards)



Corrosion or heat damage



Eye / Eye slings: Min. of 10 dia. between sleeves or splices



Grommet slings: Min. of 96 dia. in the sling's circumference



Severe wear of outside wires



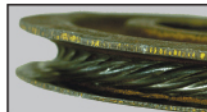
Hook spread or twist



Missing or illegible sling identification



Core damage



Sheaves with worn bearings, cracked spoke, rim wear, depth wear, or corrugation

### Removal Criteria for Web Slings and Roundslings

Reference the ASME B30.9 Standard



Heat damage or melting



Chemical damage



Ultraviolet ray damage or severe abrasion to web



Worn or broken stitching



Distortion of fittings



Any holes, cuts, tears, snags, or punctures



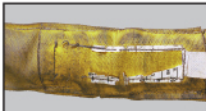
Crushing or sling body knots



Cuts, snags, or punctures which exposes core yarns



Hook spread or twist



Missing or illegible sling identification



Sling impacted with foreign material



Roundsling with broken or crushed core yarns

### Removal Criteria for Alloy Steel Chain Slings

Reference the ASME B30.9 Standard



Heat damage, heat > 1000°F



Bent, twisted, or cracked links



Broken welds or components



Non-hinging components



Severe corrosion or pitting



Elongation of links or components



Bent, twisted, or cracked master links or couplers



Links or attachments with severe wear, nicks, or gouges



Non-working latches



Hook spread or twist



Missing or illegible sling identification



Makeshift links or fasteners

### Removal Criteria for Rigging Hardware and Below-The-Hook Lifting Devices

Reference the ASME B30.26, ASME B30.10, and ASME B30.20 Standards



Missing or illegible identification



Structural deformation



Cracks or broken welds



Severe metal loss



Hole distortion



Damaged threads



Heat damage or weld splatter



Severe corrosion or pitting



Component hingeability



Substandard components and / or repairs



Loose or missing guards, fasteners, covers, or nameplates



Cracked or worn pulleys, sheaves, sprockets, bearings, chains, belts, or linkages