

# Carbon Cancel Executive Summary



## Household Goods Moving



115.73  
Metric Tons  
Land/Sea

Household Goods land/sea total carbon emissions



11.85 Metric  
Tons Air

Air Shipments total carbon emissions

## Relocation Travel



188,856  
Air KM

Air Travel Mileage / kilometers total carbon emissions



22,876  
Driven KM

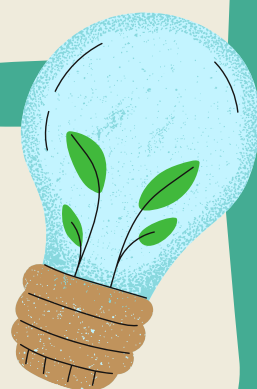
Driven Mileage / kilometers total carbon emissions

## Temporary Housing



3,656  
Nights

Total Property Usage carbon impact



The equivalent of purchased carbon offsets  
that correlate to the emissions noted above!

**\$1340.61**



Household Goods  
Moving

**\$133.64**



Relocation  
Travel

**\$856.92**



Temporary  
Housing

## What we did with the \$\$



78 Trees planted



455 KWH Renewable  
energy

