



The perfect backdrop
for your next event



EPIC The Irish
Emigration
Museum



A one-of-a-kind venue for an unforgettable event

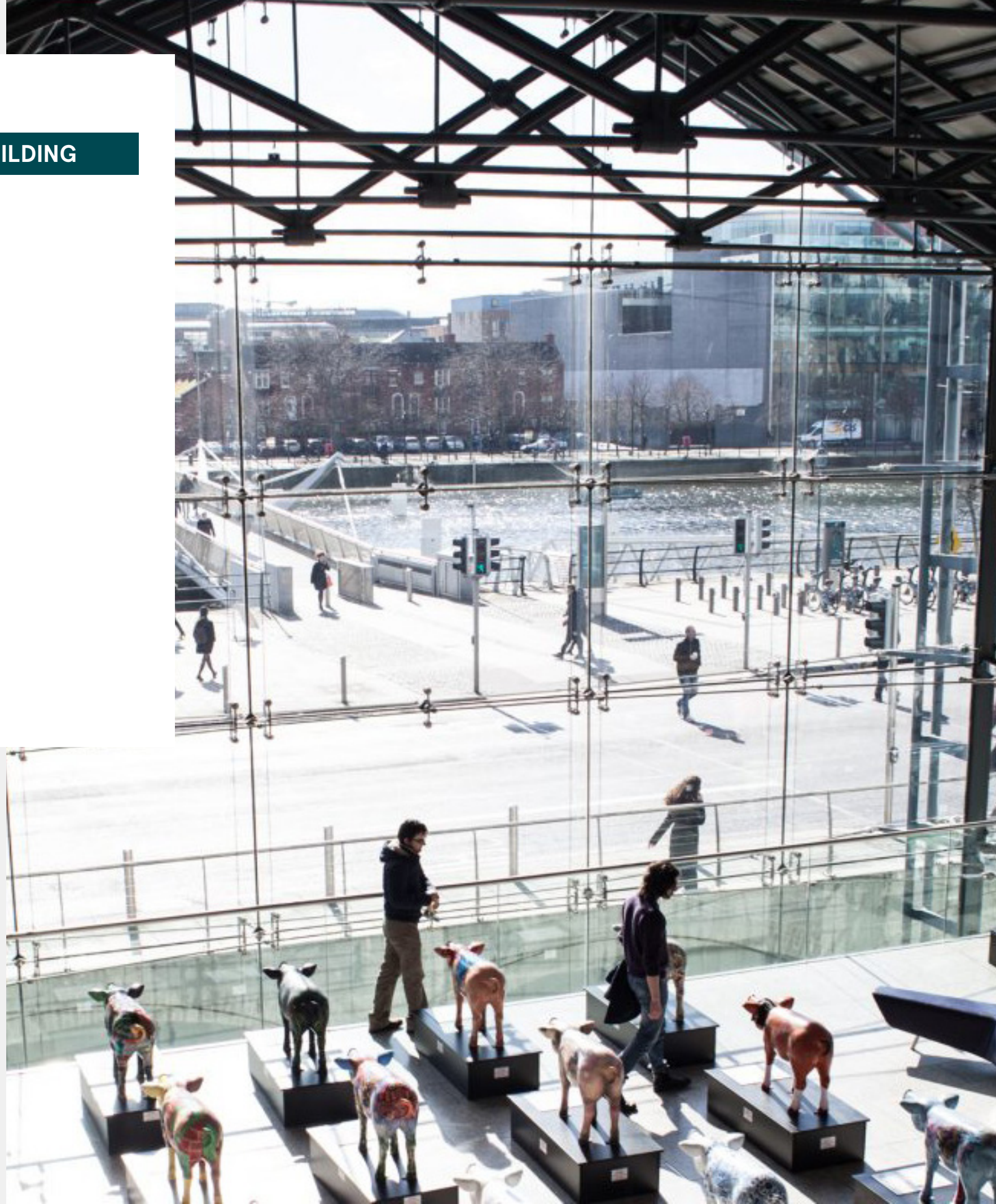
To host the perfect event you need a truly unique venue, the freedom to make it your own, excellent food and drink and the warmest of welcomes. The chq Building offers all this and much more.

Ideally located on Custom House Quay in the heart of Dublin's Docklands, CHQ overlooks the River Liffey, where merchants once unloaded their cargo and from where so many Irish emigrants left. This listed former warehouse is a dream venue for event planners.

From our atmospheric vaults to our bright and airy mezzanine, we've got a range of spaces to suit every gathering. From small intimate parties of 50 guests to large showstopping corporate events of up to 800 people, we've got the versatility to host events of all shapes and sizes.

Whether you're planning an exhibition, product launch, brand activation event, awards ceremony, networking or corporate event, our one-of-a-kind, awe-inspiring spaces are sure to impress.

→ THE CHQ BUILDING



The chq Building

The iconic chq Building is one of the finest pieces of 19th century architecture in Ireland. Originally built as a tobacco store with wine vaults underneath, it has played host to some memorable events throughout history, dating as far back as the legendary Crimean Banquet in 1856, one of the most talked-about events of its time.



The Crimean Banquet, The chq Building, 1856

“CHQ was the perfect venue for the Aer Lingus new uniform launch. It was a combination of old and new Ireland, which represented our client’s own history, everything from the exposed brickwork to the cast iron frame and the modern glazing enhanced our event design. The event space is extremely flexible in its potential use and the on site CHQ team led by Tania are a pleasure to work with”

— Barry Muldowney, Verve Live Agency.

→ The Galleria



The Galleria

The Galleria is the perfect place to put on a show. The scene is set with a remarkable modern glass façade overlooking the river, designed by the renowned Irish engineer Peter Rice. Soaring ceilings and exposed brickwork add to the drama.

From networking events and presentations to awards ceremonies, festivals and product launches, it always delivers the "wow" factor.

Area: **445 sq metres**

Ceiling height: **Min 6 metres - max 9.9 metres**

Cocktail reception: **500 guests**

Theatre style: **200 guests**

Storage space area available: **100 sq metres**

Ceiling height: **3 metres**



→ The Liffey Corner



The Liffey Corner

For cosier, more intimate events, The Liffey Corner offers a private and vibrant space which is perfect for exhibitions, showcases and workshops. Two floor to ceiling glass walls maximise natural light, while allowing views of the River Liffey and capturing the hustle and bustle of the main mall. It can be used as a standalone venue or in conjunction with other CHQ spaces to increase overall capacity.

Area: **215 sq metres**

Ceiling height: **3 metres**

Cocktail reception: **100 guests**

Theatre style: **70 guests**



→ The Mall

The Mall

The Mall runs the entire length of CHQ and the whole south end can be used to host the most original of events. Perfect for large corporate events, the spectacular ceiling height, glass and steel make this an awe-inspiring venue. Adaptable and easily customised, no other industrial building in Dublin offers such vast space and height.

Area: **500 sq metres**

Ceiling height: **6 metres – max 9 metres**

Cocktail reception: **300 guests**

Theatre style: **200 guests**



→ The Annie Moore Room



The Annie Moore Room

The Annie Moore Room, named after the first emigrant to pass through Ellis Island, is a fully equipped meeting room located across the mall from The Galleria. This space offers natural daylight and is perfect for meetings of up to 48 guests with built in screen, overhead LCD projector and speakers.

Area: **68 sq metres**

Ceiling height: **3 metres**

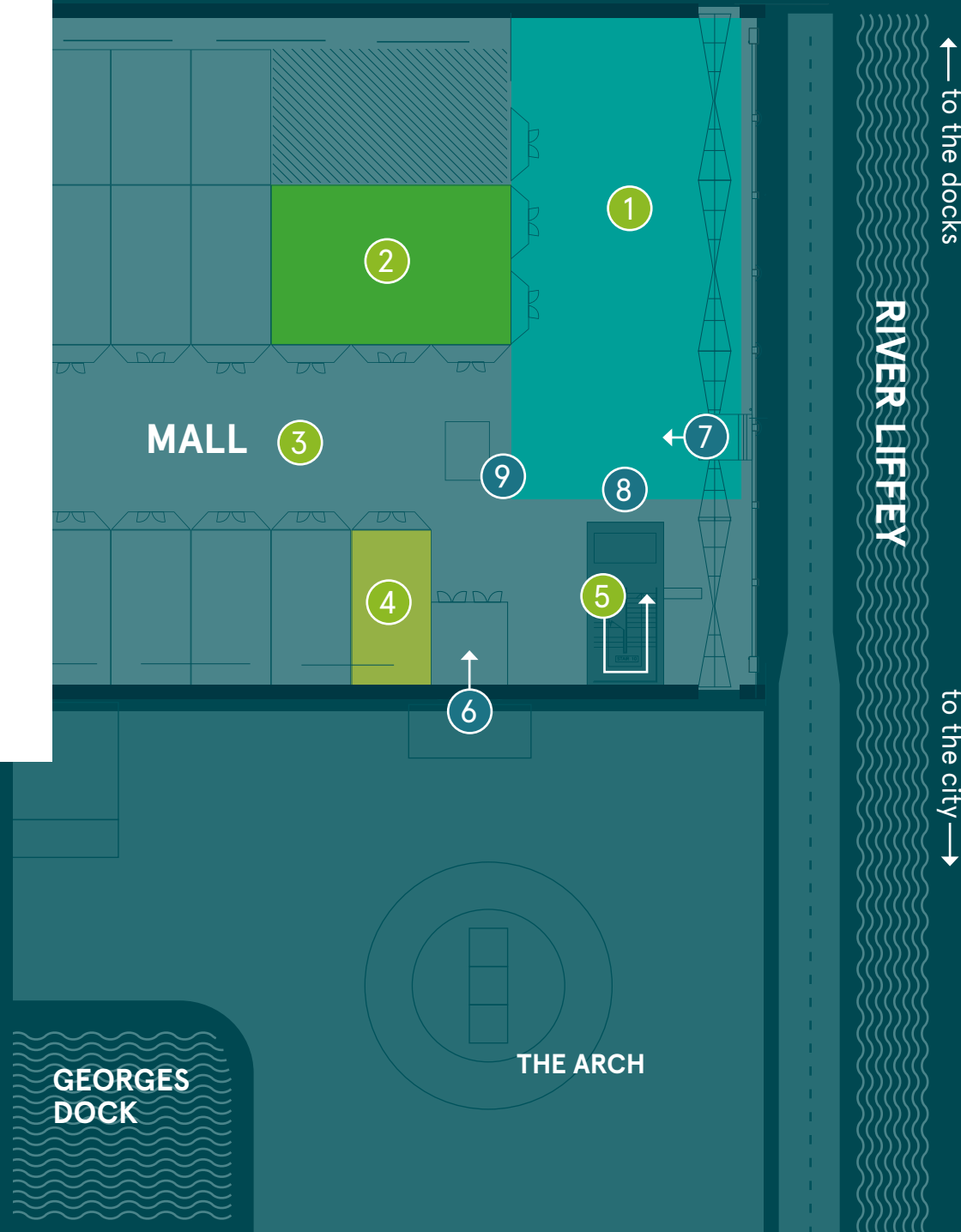
Cocktail reception: **50 guests**

Theatre style: **48 guests**

The chq Building

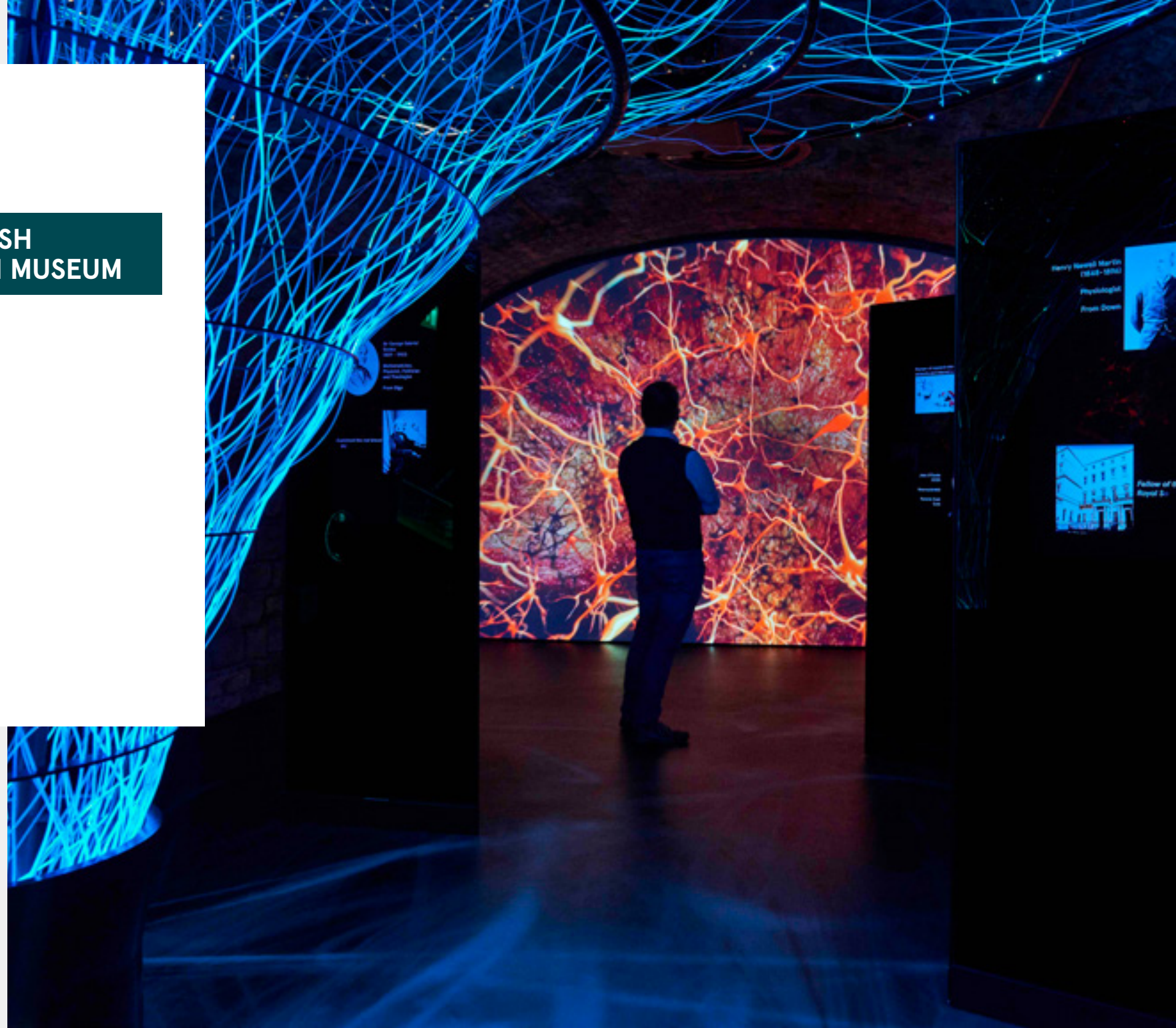
Floor Plans & Specifications

→ CHQ FLOOR PLANS & SPECIFICATIONS



ROOM	LEVEL	AREA sq m	CEILING HEIGHT (metres)	COCKTAIL RECEPTION	THEATRE STYLE
The chq Building					
1 The Galleria	Ground	445	Min 6m Max 9.9m	500	200
2 The Liffey Corner	Ground	215	3m	100	70
3 The Mall - South end	Ground	500	Min 6m Max 9.9m	300	200
4 The Annie Moore Room	Ground	68	3m	50	48
EPIC The Irish Emigration Museum					
5 Events Galleries	Vaults	561	3m	180	100
6 Group Entrance				8 Registration Desk	
7 Single Entrance				9 VIP Desk	

→ EPIC THE IRISH EMIGRATION MUSEUM



EPIC

The Irish Emigration Museum

EPIC goes beyond Irish stereotypes - you won't find leprechauns or pots of gold here, but you'll discover that what it means to be Irish expands far beyond the borders of Ireland through the stories of Irish emigrants who became scientists, politicians, poets, artists and even outlaws all over the world. These stories and our stunning galleries offer the perfect backdrop, creating maximum impact for your next corporate event.



"What a brilliant venue to host an event! It is a wonderful museum and a brilliant conversation starter - all of our guests were very impressed. Plus, the staff are excellent to deal with - very accommodating, helpful and hands on throughout the entire process. Cannot recommend enough!"

— Sarah Kennedy, Garland

→ Event Galleries



Event Galleries

Put culture on the agenda at your next breakfast briefing, cocktail reception, product launch or networking session. Housed in the atmospheric vaults of EPIC, our Event Galleries offer unique spaces to impress your guests, with world-class exhibits and a truly interactive and immersive experience. Our galleries have a range of themes that you can link with your event to create a truly unique experience.

Area: **561 sq metres**

Ceiling height: **3 metres**

Cocktail reception: **180 guests**

Theatre style: **100 guests**



Floor Plans & Specifications

→ EPIC FLOOR PLANS
& SPECIFICATIONS

ROOM	LEVEL	AREA sq m	CEILING HEIGHT (metres)	COCKTAIL RECEPTION	THEATRE STYLE
EPIC The Irish Emigration Museum					
5 Event Galleries	Vaults	561	3m	180	100



→ CATERING



Catering

From creative canapés to authentic Irish food and everything in between, you'll be spoiled for choice at CHQ. We have a selection of excellent bars, restaurants and cafés right here in the building who will work with you to select food that perfectly complements your event.

The beauty of in-house catering is that they're right where you need them. They can cater your event or offer restaurant-style dining and post-event drinks. Their vast experience and excellent track record of catering for our corporate events means you're in the very best of hands.



"I can guarantee that we will be recommending a visit to your world class facilities by staff at the Embassy and visiting delegations."

— Peter Glennon,
Political Specialist U.S. Embassy Dublin

→ Partners

Partners

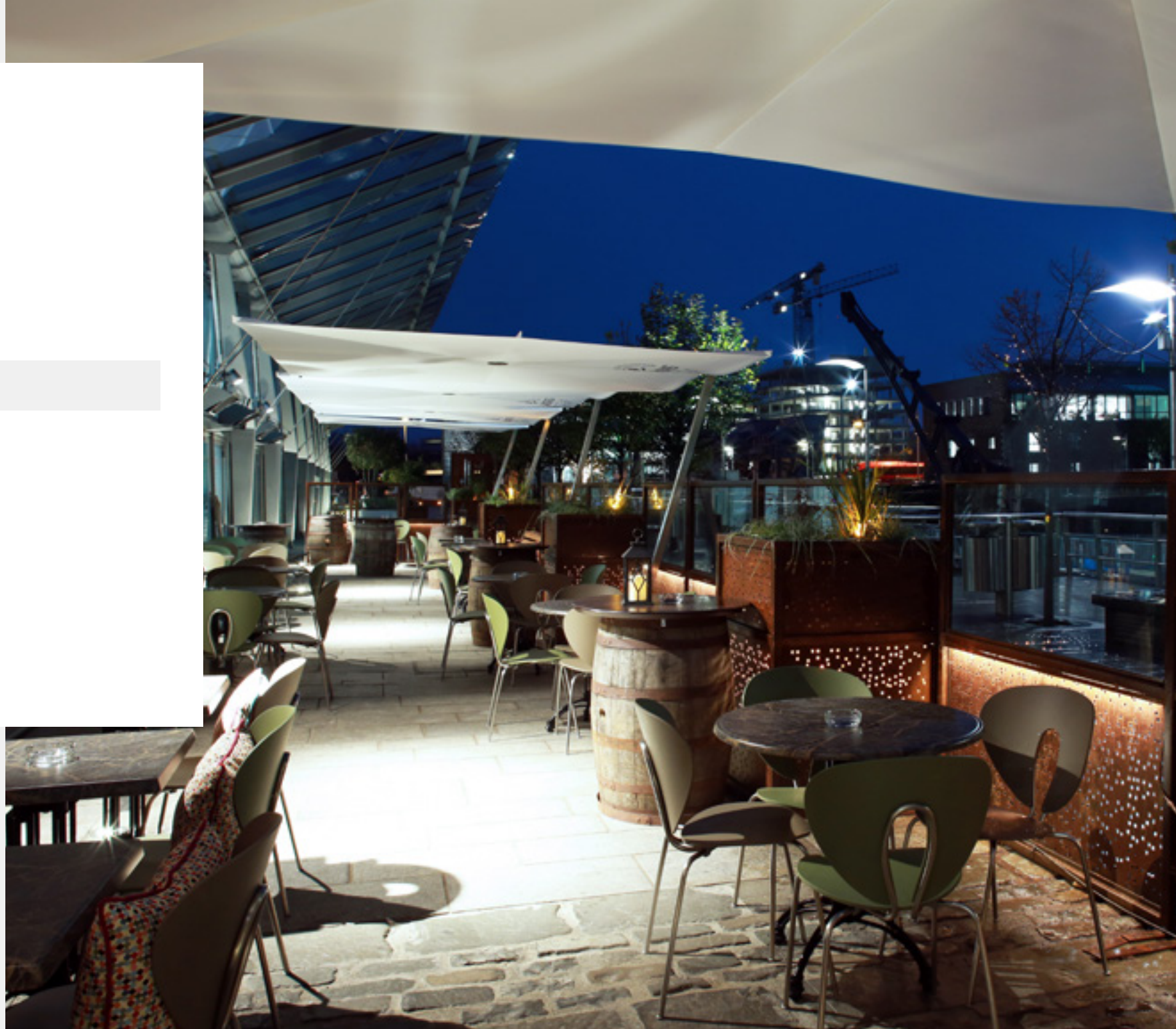
CHQ is home to some excellent restaurants that we are lucky to call our partners and highly recommend.

Urban Brewing and Stack A Restaurant is situated within the vaults of The chq Building and includes a microbrewery and two outdoor terraces, with room for 375 seated guests.

ELY Bar & Grill, also located in the historic vaults, offers a stunning backdrop, perfect for up to 200 guests.

Bakehouse offers a special combination of Irish warmth and friendliness, the highest quality homemade foods, baked goods and beverages.

Mitchell & Son, Ireland's oldest Wine and Spirit merchant, offers a huge selection of wines, with whiskey and gin tastings to complement any event.



→ Entertainment

Entertainment

When it comes to entertainment, the Irish are legendary and we've got a rich repertoire to draw from, including storytelling, traditional music and Irish dancing. The atmospheric backdrop of the vaults, combined with our inspirational galleries, will make your event truly memorable.



"EPIC was the perfect venue for our social event. It provided an outstanding, memorable and unique experience for our guests. The interactive elements were a great talking point and the educational elements were an excellent welcome to the city. I also can't speak highly enough of the team. From the initial meeting through to the event itself, the team were able to tailor plans specifically for us, which helped deliver a great evening. Thank you."

— Matt Davenport, MCI Project Director,
Social Program of 2019 International
Headache Society Congress

→ EVENT OPTIONS

Event Options

The chq Building and EPIC offer a variety of different spaces for your event, all of which are extremely versatile. Each of these spaces can be booked separately or they can be combined in creative ways to enhance your event. We're looking forward to working with you to show how we can deliver the best possible experience for your guests in our venue.

The chq Building

The Galleria, The Liffey Corner and The Annie Moore Room are available as standalone spaces through the daytime and evening. The Mall is such a special space that we can only share it in the evenings.

EPIC The Irish Emigration Museum

EPIC can be booked for exclusive use for morning or evening events in conjunction with The chq Building spaces or as a more intimate offering for your guests in complete exclusivity.

EXCLUSIVE USE OF EPIC OUTSIDE OPENING HOURS

MORNING EVENTS

(7.00am-10.00am)

Exclusive use of the entire museum, including the exhibition, with space in the galleries for refreshments.

RECEPTION & EVENING EVENTS

(available from 6.00pm)

Exclusive use of the entire museum, including the exhibition, with space in the galleries for catering and refreshments.

Every event includes a tailored guided tour of EPIC.

EVENTS DURING OPENING HOURS

(10.00am to 6.00pm)

We are delighted to welcome groups to EPIC during opening hours for tailored tours. A good combination includes a welcome drink and museum tour, followed by a visit to Urban Brewing or ELY Bar & Grill for refreshments.



→ CASE STUDIES



Case Studies

Want to turn the space into your own personal oasis?
Want to build an airport runway? Want to erect a dome?

No problem. Nothing thrills us more than seeing the exciting ways clients have transformed our spaces to suit their themes and create maximum impact. At CHQ every event is truly unique, as you will see from our case studies.



→ Wales Week



Wales Week

Event: **Wales Week** - A week of workshops, networking, performances, exhibitions and evening receptions.

Number of attendees: **650** over the week-long showcase

Spaces used: **The Galleria, The Liffey Corner, Event galleries**



When the organisers of Wales Week brought their celebration of Welsh culture to Dublin for the first time they selected The chq Building as the venue for this very special event. Our space offered a unique backdrop for their “Welsh Dome” overlooking the River Liffey. It also gave the attendees the opportunity to engage in a week-long festival celebrating the unique cultural relationship between Ireland and Wales.

Many of the week’s events took place inside a specially created 360° immersive tech dome, located in **The Galleria** space. This structure was 10x10x4 metres and over 1,400kg.

One of the highlights of the week was an evening celebration, which included a welcome reception in the 360° tech dome, followed by a tour of EPIC and a drinks and canapé reception in the event galleries of the museum.

Event produced by Orchard.

→ Aer Lingus



Aer Lingus

Event: **Launch of new crew uniforms**

Number of attendees: **250**

Spaces used: **The Galleria and The Liffey Corner**



When Aer Lingus launched their new uniforms, CHQ provided the perfect backdrop to showcase the iconic designs by Louise Kennedy - fresh and modern with a nod to Irish tradition and heritage, just like ourselves.

The Galleria was transformed into a catwalk, built inside a spectacular plane fuselage, while **The Liffey Corner** was the ideal place to lounge, network over breakfast and host media interviews.

Event designed and produced by Verve The Live Agency.

→ AIB



AIB

Event: **AIB The Livin Dublin Summit**

Number of attendees: **200**

Spaces used: **The Galleria and The Liffey Corner**



At The Livin Dublin Summit AIB wanted to engage first-time buyers by creating impactful advice settings with a variety of atmospheres. From hosting expert speakers to cosy chats, CHQ's diverse and versatile spaces delivered.

A large stage was built in **The Galleria** for presentations with panel discussions, with a special area for individual consultations. **The Liffey Corner** became a lounge for more casual meetings.

Event designed and produced by Verve The Live Agency.

The Irish Times

Event: **The Martyn Turner Exhibition**

Spaces used: **The Liffey Corner**

Number of attendees: **150**

→ The Irish Times

The Times
We Live In
Martyn Turner Satire

EPIC
The Irish
Emigration
Museum

The Times
We Live In
Martyn Turner

The Irish Times selected **The Liffey Corner** to display an exhibition of the work of the contemporary satirist, Martyn Turner, an event that was part of the 2018 Jonathan Swift Festival.

The open space and light-filled exhibition area provided the perfect setting to showcase the many cartoons created by Turner for The Irish Times over the past five decades. This invitation-only exhibition launch included a drink and canapé reception.

Exhibition supported by The Irish Times.

Sky Ireland

Event: **Launch of Sky Ireland latest campaign.**

Spaces used: **EPIC Event Galleries**

Number of attendees: **100**

→ Sky Ireland



Sky Ireland chose the EPIC Event Galleries to launch their latest marketing campaign.

The **Celebrations Gallery** was the perfect setting for an early morning briefing, where colourful contemporary chairs were used to contrast with the natural backdrop of the stone vaults. Following the briefing, guests enjoyed a delicious breakfast and networked in the Storytelling Gallery.

Photos credit: Sky plc.

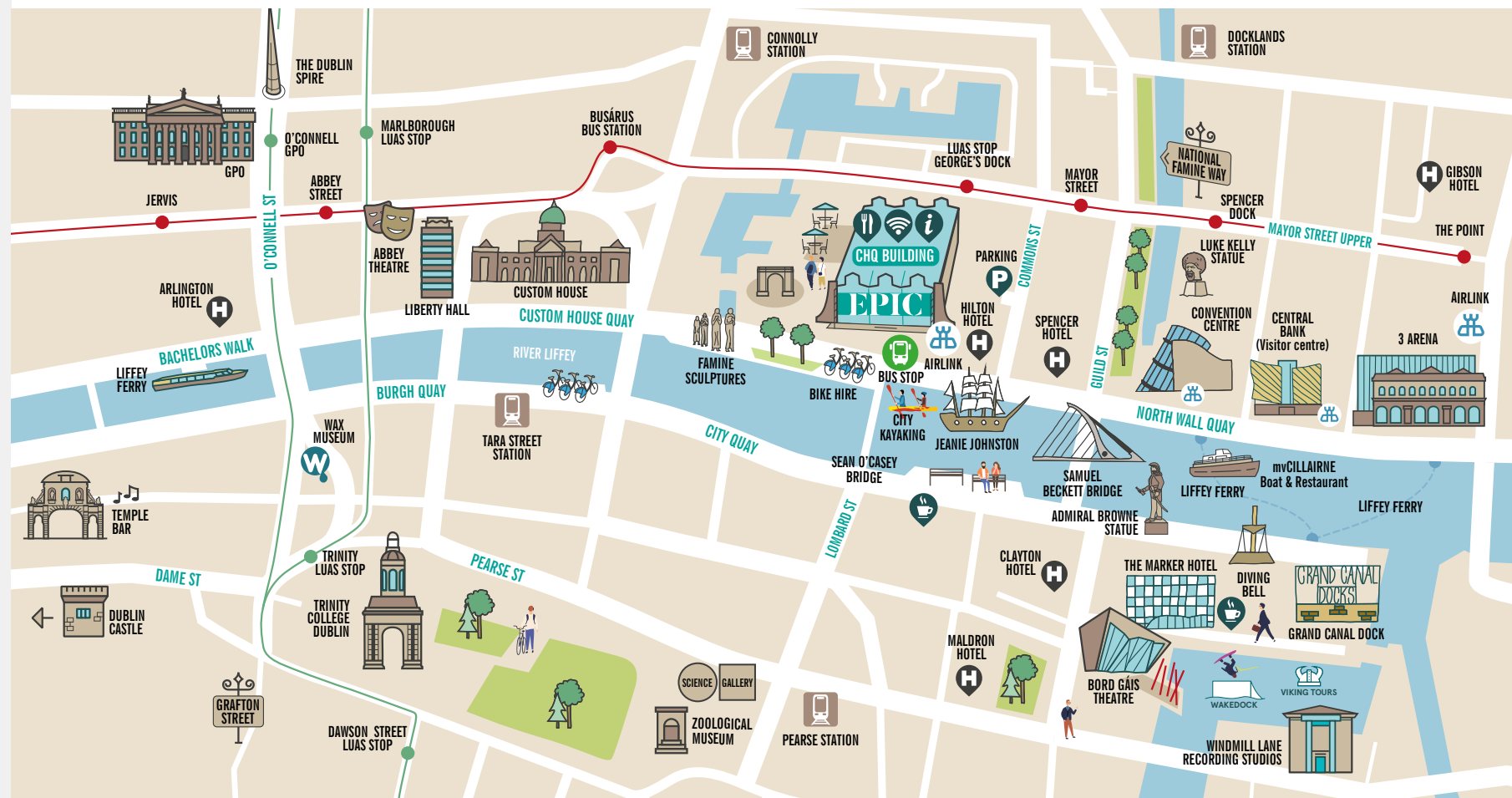


→ CONTACT



Location: CHQ, Custom House Quay, Dublin 1

Distance from Dublin Airport: 15 minutes via Dublin Tunnel to the Docklands



Contact

Making an event your own is all about the detail. Start with finding the perfect space and let the fun begin. Give us a call – we're ready when you are.

Email: events@epicchq.com

Phone: +353 1 906 0861

or talk to us about venue hire



Tania Costa
Events Sales Executive



David Cleary
Head of Sales

