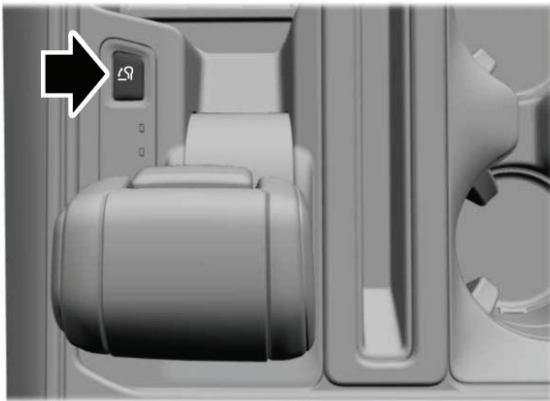


Automatic Transmission

STOWING THE SELECTOR LEVER - VEHICLES WITH: CONSOLE SHIFT (G2177962)

Press the stow button to fold down the selector lever. Press the button again to release the selector lever from the stow position to use.

The stow function allows the shifter to lay flat in the console, enabling the use of the working surface tray.



Note: Do not store objects in the selector lever stow bin, and be sure that the bottom selector lever tray mat is flat inside the selector lever stow bin.

Note: If there are objects in the stow bin while stowing the selector lever, the selector lever could come back to the upright park (P) position.

MANUAL PARK RELEASE

What Is Manual Park Release (G2128066)

Manual park release allows you to move your transmission out of the park (P) position in the event of an electrical malfunction or emergency.

Manual Park Release Precautions (G2128067)

WARNING: When doing this procedure, you need to take the transmission out of park (P) which means your vehicle can roll freely. To avoid unwanted vehicle movement, always fully apply the parking brake prior to doing this procedure. Use wheels chocks if appropriate.

WARNING: If the parking brake is fully released, but the brake warning lamp remains illuminated, the brakes may not be working properly. Have your vehicle checked as soon as possible.

WARNING: Do not drive your vehicle until you verify that the stoplamps are working.

Use the manual park release to move your transmission from the park (P) position in the event of an electrical malfunction or emergency. See **Emergency Towing** (page 503).

Note: Do not engage the manual park release with the engine on.

Automatic Transmission

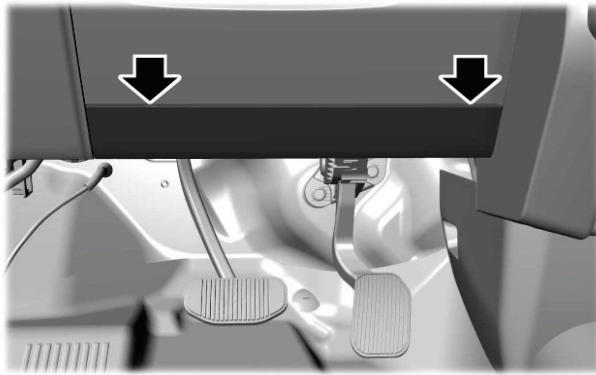
Using Manual Park Release (G2128068)

Activating the Manual Park Release Cable

1. Apply the parking brake. See **Electric Parking Brake** (page 320).

Note: If vehicle battery is dead, for example, no electrical power available, an external power source may be required to apply the parking brake.

2. Locate the manual park release cable access cover at the bottom of the driver dash lower panel, under the steering wheel.



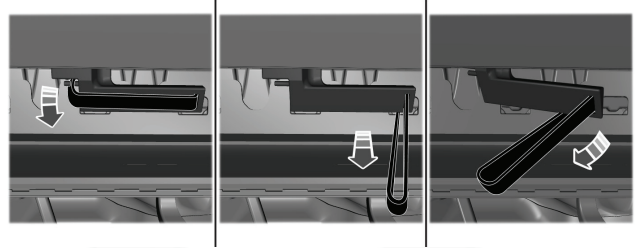
3. Carefully open the hinged access cover using a plastic type wedge or pry tool at the upper edge of the panel. If done correctly the panel will swing downward.

Note: Do not activate the override lever until you are in the driver's seat.

4. Switch ignition on, but do not start your vehicle.
5. Once in the driver seat, fully apply the brake pedal and hold. Do not release. Pull the tether straight out toward the driver seat until engaged. If done correctly, a message will appear in the instrument cluster.

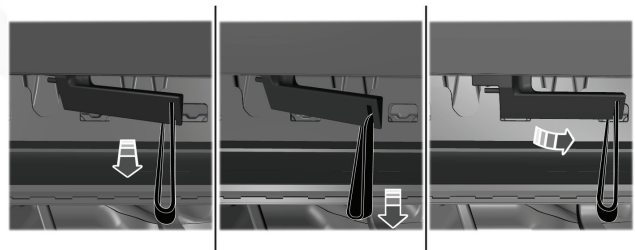
Note: Do not use excessive force when using the manual park release handle, as it could result in damage to the handle.

Note: Your vehicle is now out of the park (P) position and is free to roll.



6. With your foot still fully applied on the brake pedal, disengage the parking brake. See **Electric Parking Brake** (page 320).
7. Your vehicle remains in neutral (N) for emergency towing purposes.
8. Switch off the ignition.
9. Once safe to do so, and there is no risk that your vehicle will roll, disconnect the negative (black) battery cable from the battery.

Returning Your Vehicle to Normal Mode



1. Once it is safe to do so, reconnect the negative (black) battery cable to the battery.
2. Apply the parking brake. See **Electric Parking Brake** (page 320).

Note: If vehicle battery is dead, for example, no electrical power available, an external power source may be required to apply the parking brake.

Automatic Transmission

Note: Do not pull the tether until you are in the driver seat.

- Once in the driver seat, fully apply the brake pedal and hold, do not release. Using the tether, pull the handle towards the driver seat until you hit a hard stop.
- Pull the lever toward the floor until it hits a hard stop, before returning to the stowed position.

Note: Maintain tension on the strap until the lever reaches the stowed position.

- Return the manual park release cable lever to the stowed position and install the access cover.
- With your foot fully applied on the brake pedal, start your vehicle. Confirm that your vehicle is in the park (P) position and that the instrument cluster indicates park (P).

Note: If the instrument cluster is not displaying the park (P) position or the instrument cluster displays an error message, apply the parking brake before exiting your vehicle. Contact an authorized dealer for service.

- Close the access cover.

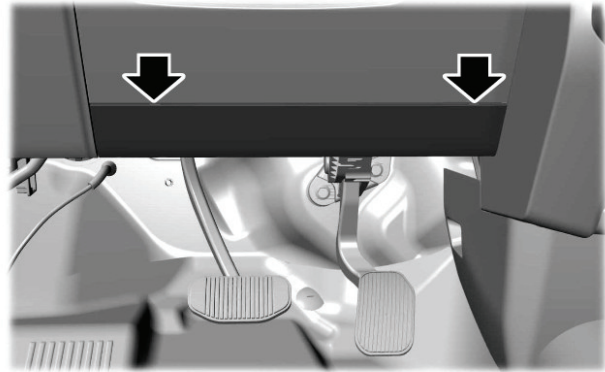
Using Manual Park Release - Raptor (G2210528)

Activating the Manual Park Release Cable

- Apply the parking brake. See **Electric Parking Brake** (page 320).

Note: If vehicle battery is dead, for example, no electrical power available, an external power source may be required to apply the parking brake.

- Locate the manual park release cable access cover at the bottom of the driver dash lower panel, under the steering wheel.



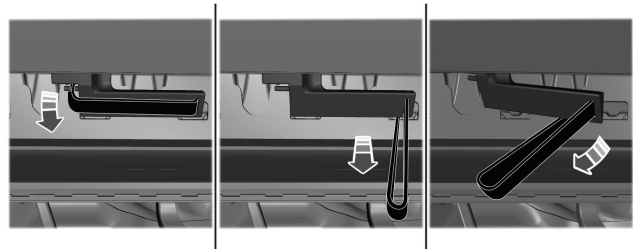
- Carefully open the hinged access cover using a plastic type wedge or pry tool at the upper edge of the panel. If done correctly the panel will swing downward.

Note: Do not activate the override lever until you are in the driver's seat.

- Switch ignition on, but do not start your vehicle.
- Once in the driver seat, fully apply the brake pedal and hold. Do not release. Pull the tether straight out toward the driver seat until engaged. If done correctly, a message will appear in the instrument cluster.

Note: Do not use excessive force when using the manual park release handle, as it could result in damage to the handle.

Note: Your vehicle is now out of the park (P) position and is free to roll.

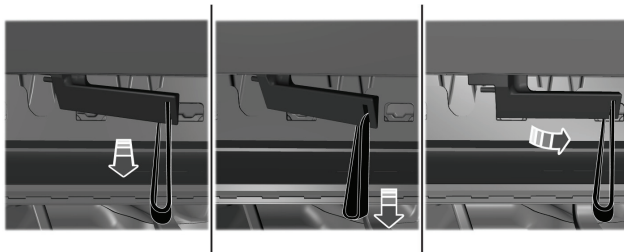


- With your foot still fully applied on the brake pedal, disengage the parking brake. See **Electric Parking Brake** (page 320).

Automatic Transmission

7. Your vehicle remains in neutral (N) for emergency towing purposes.
8. Switch off the ignition.
9. Once safe to do so, and there is no risk that your vehicle will roll, disconnect the negative (black) battery cable from the battery.

Returning Your Vehicle to Normal Mode



1. Once it is safe to do so, reconnect the negative (black) battery cable to the battery.
2. Apply the parking brake. See **Electric Parking Brake** (page 320).

Note: *If vehicle battery is dead, for example, no electrical power available, an external power may be required to apply the parking brake.*

Note: *Do not pull the tether until you are in the driver seat.*

3. Once in the driver seat, fully apply the brake pedal and hold, do not release. Using the tether, pull the handle towards the driver seat until you hit a hard stop.
4. Pull the lever toward the floor until it hits a hard stop, before returning to the stowed position.

Note: *Maintain tension on the strap until the lever reaches the stowed position.*

5. Return the manual park release cable lever to the stowed position and install the access cover.

6. With your foot fully applied on the brake pedal, start your vehicle. Confirm that your vehicle is in the park (P) position and that the instrument cluster indicates park (P).

Note: *If the instrument cluster is not displaying the park (P) position or the instrument cluster displays an error message, apply the parking brake before exiting your vehicle. Contact an authorized dealer for service.*

7. Close the access cover.