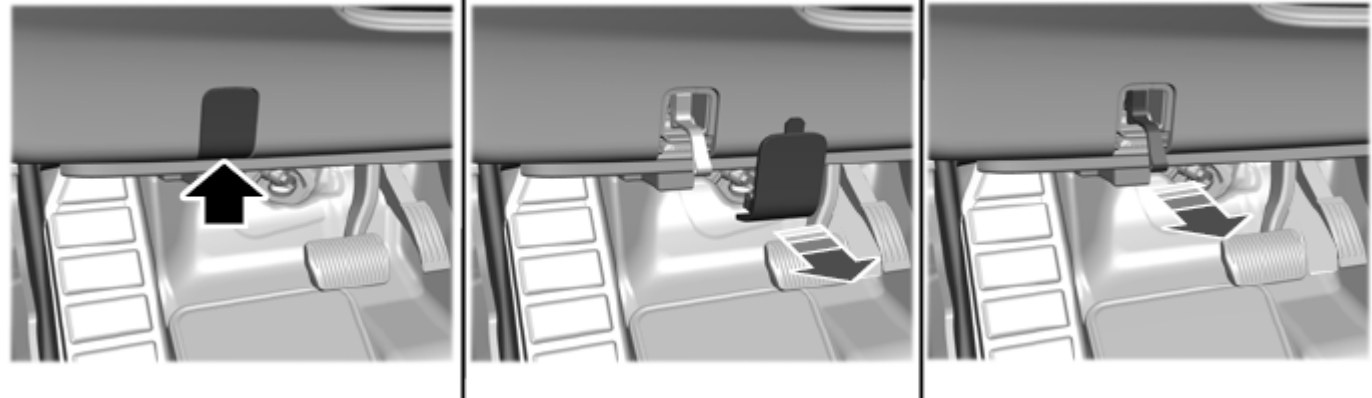


Activating the Manual Park Release Cable

1. Apply the parking brake. See **Electric Parking Brake** (page 215).

Note: If the vehicle battery is dead, for example, no electrical power is available, you could require external power to apply the parking brake.

2. Locate the Manual Park Release cable access cover on the lower instrument panel dash to the bottom left hand side of the steering column.



3. Using a tool or the key blade, carefully remove the access cover.

Note: Do not pull the tether until you are in the driver seat.

4. Switch the ignition on, but do not start your vehicle.
5. Once in the driver seat, fully press the brake pedal and hold. Do not release. Pull the orange tether towards the driver seat until the tether gets locked in the override position. Then leave the tether.
6. The tether should stay extended while in the override position.

7. If done correctly, a message on the instrument cluster displays Park Not Available, Transmission Not in Park, or Shift System Fault.

Note: Your vehicle is now out of the park (P) position and is free to roll.

8. With your foot still fully applied on the brake pedal, disengage the parking brake. See **Electric Parking Brake** (page 215).
9. Your vehicle remains in neutral (N) for emergency towing purposes.
10. Switch off the ignition.

11. Once safe to do so, and there is no risk that your vehicle will roll, disconnect the negative (black) battery cable from the battery.

Returning Your Vehicle to Normal Mode

1. Once it is safe to do so, reconnect the negative (black) battery cable to the battery.
2. Apply the parking brake. See **Electric Parking Brake** (page 215).

Note: If the vehicle battery is dead, for example, no electrical power is available, you could require external power to apply the parking brake.

3. Fully apply the brake pedal and hold, do not release. Pull the orange tether outward towards the driver seat to remove it from the override position.

4. The cable releases and retracts back to its original rest position.

5. Stow the manual park release cable tether back inside the instrument panel dash hole, install the access cover by pressing it back in position.

6. With your foot fully applied on the brake pedal, start your vehicle. Confirm that your vehicle is in the park (P) position and that the instrument cluster indicates park (P).

7. If the instrument cluster is not displaying the park (P) position or there is a message stating Park Not Available, Transmission Not In Park, or Shift System Fault, apply the parking brake before exiting your vehicle. Contact an authorized dealer for service.