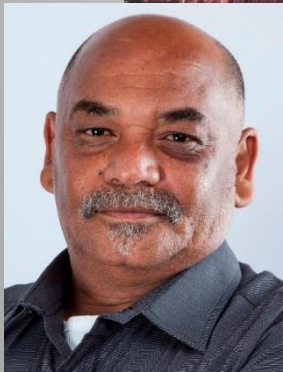




RECOMMENDED SPECIALISED FLOOR FITTING TOOLS



SITE AND MATERIALS

1. SITE CONDITIONS MUST BE CONDUCTIVE TO RECEIVE VINYL FLOORING. ALL SCREEDS MUST BE ASSESSED FOR LEVELNESS (SANS 0155:2009) AND MOISTURE READINGS (75% RH OR LOWER) MUST BE CONDUCTED.
2. UNDERSTAND YOUR PLAN AND LAYOUTS AND ENSURE YOUR MATERIAL QUANTITIES ARE CORRECT.
3. CHECK THE COLOUR, BATCH NUMBERS AND ROLL SEQUENCE NUMBERS.
4. ALL MATERIAL MUST BE LAID IN BATCH NUMBER AND ROLL SEQUENCE GROUP NUMBER ORDER.
5. IF ANY MATERIAL OR COLOUR FAULTS ARE IDENTIFIED, IMMEDIATELY STOP LAYING THE MATERIAL.
6. IN ADDITION, CALL YOUR MATERIAL SUPPLIER. NO CLAIMS ON INSTALLATIONS OF FAULTY MATERIAL IN EXCESS OF 100M² WILL BE CONSIDERED.
7. IF POSSIBLE, ALLOW THE MATERIAL TO ACCLIMATISE AND RELAX AT LEAST 24 HOURS PRIOR TO INSTALLATION.
8. SITE CONDITIONS ARE VERY IMPORTANT. IT IS PREFERABLE THAT OTHER TRADES ARE NOT WORKING IN THE SAME AREA TO PREVENT DUST OR CONTAMINATION OF THE AREA, ADHESIVES, AND FLOORING.
9. KEEP YOUR WORK AREA CLEAN AND DUST FREE.

INSTALLATION, ADHESIVES & WELDING

1. REQUEST THE PRODUCT SPECIFIC INSTALLATION GUIDE IS SOURCED FROM POLYFLOR.
2. ENSURE THE CORRECT ADHESIVE AND RECOMMENDED TROWEL ARE USED AND THAT NO TROWEL MARKS ARE MIRRORRED THROUGH. ONCE ADHESIVE IS APPLIED, USE A MOHAIR ROLLER TO FLATTEN TROWEL MARKS. CUT THE FACTORY EDGE OFF BY 5MM.
3. OVERLAP AND SCRIBE TO ACHIEVE A TIGHT JOINT. ROLL SHEETING OR TILES WITH A 68KG ROLLER.
4. GROOVE 2/3RDS THROUGH THE SHEETING WITH A GROOVING TOOL.
5. WELD THE SHEETING AT THE CORRECT TEMPERATURE AND SPEED.
6. CUT THE WELD WITH A CUTTING SLIDE AND ALLOW TO COOL DOWN FOR AT LEAST 1 HOUR (WE RECOMMEND THE
7. MOZART SPEED TRIMMER).
8. DO THE FINAL CUT.
9. HOT KNIFING WILL NOT BE ACCEPTED WHEN WELDING.
10. HOT KNIFING WILL NOT BE NECESSARY IF THE PROCEDURES ARE FOLLOWED CORRECTLY.
11. NEW PUR SPEED NOZZLES ARE NOW AVAILABLE FROM OUR SUPPLIER.

MAINTENANCE AND SEALERS

1. IDENTIFY YOUR PRODUCT FINISH E.G. PUR, PU OR NONE COATED AND APPLY RECOMMENDED SEALER IF REQUESTED BY CLIENT.
 2. ENSURE YOUR CLIENT IS IN POSSESSION OF THE CORRECT MAINTENANCE PROCEDURE RELEVANT TO THE PRODUCT INSTALLED.
- WARRANTY CRITERIA
- ALL POLYFLOR RECOMMENDED SCREED, MOISTURE BARRIERS, ADHESIVES, TESTING & INSTALLATION TOOLS, INSTALLATION GUIDES, MAINTENANCE PROCEDURES, PRODUCT SPECIFICATIONS AND GENERAL GUIDELINES MUST BE FOLLOWED TO ENSURE A POLYFLOR WARRANTY IS ISSUED.
- NO CLAIMS WILL BE ENTERTAINED IF ANY DEVIATIONS FROM THE POLYFLOR GUIDELINES HAVE BEEN IDENTIFIED.

FLOORING CONTRACTOR'S/FITTER'S SITE CHECK LIST

MOISTURE TESTING



3(a) PROTIMETER
(MINI 2000 MOISTURE METER)



3(b) QAS 529 FLOORING
MOISTURE INDICATOR



3(c) WAGNER METER

FLOOR GRINDING MACHINES & VACUUMS



4(a) HTC GL 35 D
VACUUM



4(e) PETROL GRINDER



4(c) HTC GL 450
GRINDER



4(b) BDC1220 Vacuum



4(d) BMG-435 DIAMATIC
TRIPLE HEAD GRINDER

RIP UP TOOLS & SCRAPERS



5(a) ST72108 12"
SCRAPER



EXAMPLES OF OTHER
SCRAPERS AVAILABLE

CLEANING TOOLS



6(a) BROOM

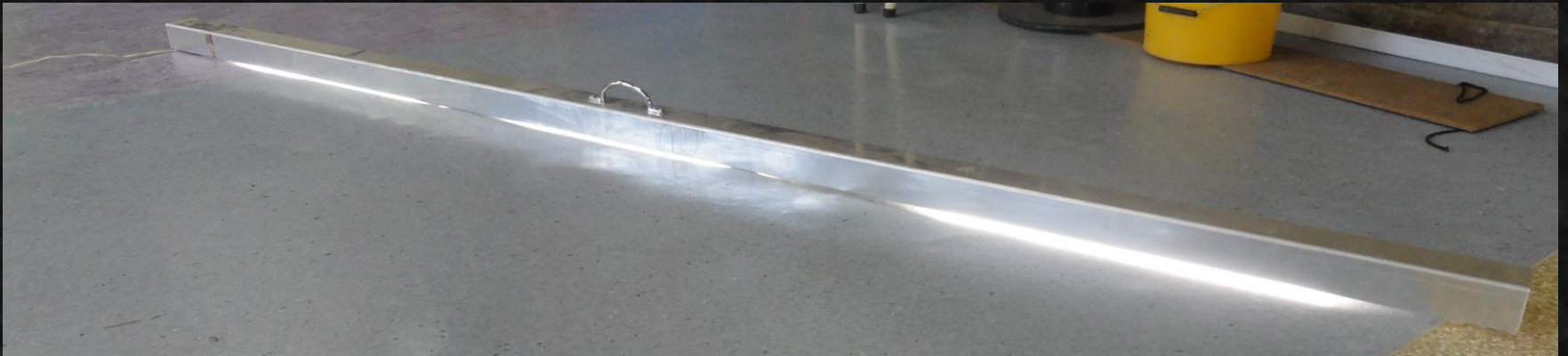


6(b) HEAVY DUTY VACUUM CLEANER

TESTING THE LEVELNESS OF SCREED



7(a) SPIRIT LEVEL



7(b) KU/Q METER

SELF LEVELLING SCREED APPLICATION



8(a) MEASURING BUCKET



8(b) SELF LEVELLER MIXING



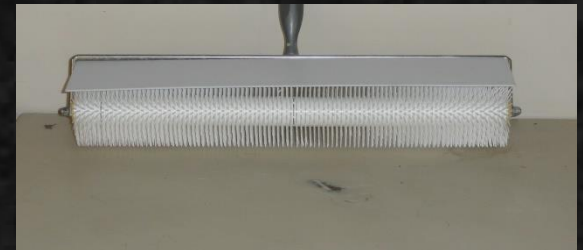
8(c) ELECTRICAL MIXING DRILL WHISK



8(d) ST860/600 MAXI TROWEL



8(e) RAKE



8(f) ROLLER

MEASURING & CUTTING



9(a) TAPE MEASURES & CHALK LINE

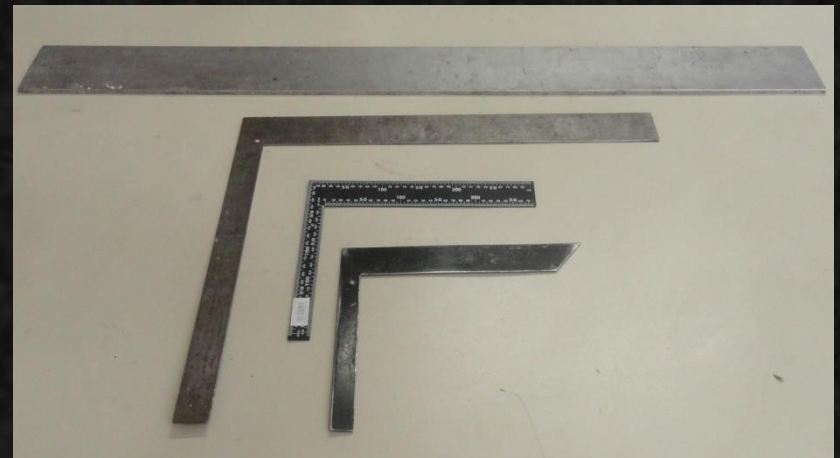


9(c) UTILITY KNIFE WITH STRAIGHT & HOOK BLADES



214B/L 2m Roll Up Straight Edge

9(b) STRAIGHT EDGE

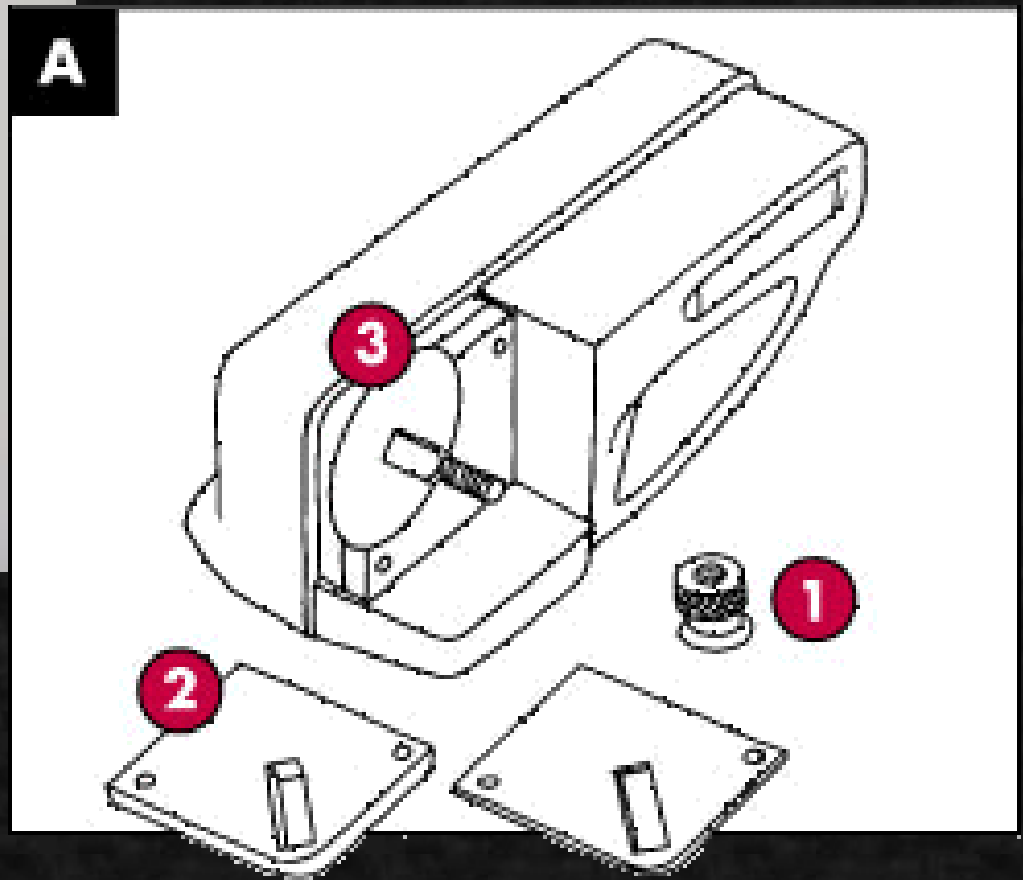


9(d) SQUARES

CUT FACTORY EDGE OFF



10(a) PROVINOL
FACTORY EDGE CUTTER



CUT FACTORY EDGE OFF CONT...



11(a) PAJARITO
JOINT SCRIBER &
PINS



11(b) STEEL HAND
ROLLER



11(c) UTILITY KNIFE WITH HOOK
& STRAIGHT BLADES

ADHESIVE APPLICATION- TROWELS & SPREADERS



24C. Fine Notch Trowel Blade

12(a) 24C FINE NOTCHED
TROWEL BLADE ONLY



24D. Trowel handle 300mm

12(b) 24D 300MM
TROWEL HANDLE ONLY



12(c) MOHAIR ROLLER



12(d) ST11232 21CM
SPREADER



12(e) ST72030 SPONGE
RUBBER KNEE PADS WITH
VELCRO STRAP

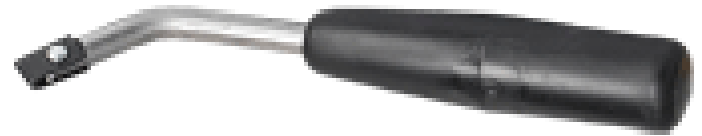


12(f) 68KG ROLLER

GROOVING



13(a) PW2050 ELECTRICAL GROOVER



13(b) ST11010 P TYPE GROOVER



13(c) GROOVER
BLADES



WELDING



14(a) LEISTER WELDING GUN



14(c) LEISTER 5MM SPEED NOZZLE



14(b) LEISTER REDUCER NOZZLE



14(d) LEISTER AUTOMATIC WELDER

TRIMMING THE WELD



15(a) MOZART
SPEED TRIMMER



15(c) SPATULA



15(b) MOZART
WELD TRIMMING
KNIFE



15(d) HAND ROLLER