



HEXAGON

MSC Software

Brochure

Design Everything.
Simulate Anything.

#msc**one**



It's time to explore a smarter way to access simulation software.

MSCOne is a definitive collection of the most advanced simulation software. Now designers and engineers can flexibly access all the CAE software they might need with a low barrier to entry, thanks to our subscription-based token system.



Accelerate innovation in your product line by taking advantage of simulation solutions that your company did not have access to previously.



Improve productivity and create a flexible environment as your project and CAE needs mature or change.



Reduce financial risk with the ability to increase or decrease capacity for when your engineering needs change.



Reduce cost and access infrequently used CAE applications that might otherwise be difficult to justify commercially. Consolidate your CAE software suppliers to most effectively stretch your limited budget.

MSCOne benefits your entire organisation, including:

- Engineering project managers.
- CAE engineering departments.
- VP of Engineering.
- Purchasing and procurement.



MSCOne

Unlock the world of engineering simulation with our portfolio token system.

MSCOne is a product token system that lets you take advantage of the breadth and depth of MSC Software's simulation portfolio within a flexible token-based licensing system*.

Typically offered on an annual subscription basis, MSCOne provides efficient implementation of your investment in product development with access to a suite of multidisciplinary engineering software tools.

Key aspects of MSCOne include:

- As a subscription product, MSCOne's capacity can be expanded or contracted based on current and future project needs.
- Access to more connected physics and disciplines allows better prediction of part and system's multiphysics behaviour.
- Ability to leverage MSC's ecosystem of products including; MSC Apex, MSC Nastran, Patran, Adams, Marc, SimManager, MaterialCenter and more.
- Substantially all current and future MSC products will be available in MSCOne.

With the subscription-based token system, you receive a pool of tokens. Your tokens are checked out from the pool and are used to access and run a full range of CAE solutions available under the MSCOne licensing system.

Each individual software item requires a certain number of tokens to run. After each use, your tokens are returned to the pool for other use. There are dozens of software items available under MSCOne.

Who is it for?

- Large-scale global enterprises.
- Small-medium sized companies with tight budgets and heavy engineering needs.
- Consulting firms that cannot invest in multiple outright per-seat purchases.
- Engineering project managers.
- CAE engineering departments.
- VP of Engineering.
- Purchasing and procurement.

*Exceptions do apply with certain products.
Please talk with your MSC representative for more information.

How MSCOne Works

MSCOne^{SE} Starter Edition

Get started with the most cost effective and flexible token system for your simulation needs.

MSCOne^{SE} is a flexible token-based licensing system that provides access to many of MSC Software's key structural and fluid simulation portfolio*.

Typically offered on an annual subscription basis, MSCOne^{SE} provides a low cost, low risk entry point for those looking to get started with a suite of multidisciplinary engineering software tools.

- Access to core structural and fluid simulation tools to allow for better prediction of part and system multiphysics behaviour.
- Tiered entry price point depending on number of users.
- Perfect for small to medium sized companies and consulting firms with tight budgets and heavy engineering needs.



MSCOne^{XT} Extended Edition

Extend the most powerful token system to take you further with trusted partner tools.

MSCOne^{XT} is an extension to MSCOne. MSCOne^{XT} provides access to an ever-evolving suite of software tools that have been developed by MSC Software's technology partners to complement the solution portfolio within the MSCOne token system.

- MSCOne^{XT} uses your existing tokens and unlocks access to complementary third-party tools.
- Provides access to one simultaneous session of all third-party partner tools at no additional cost*.
- Extends the capability and usability of existing MSCOne tools with complementary partner products.



*Exceptions do apply with certain products.
Please talk with your MSC representative for more information.

MSCOne at a glance

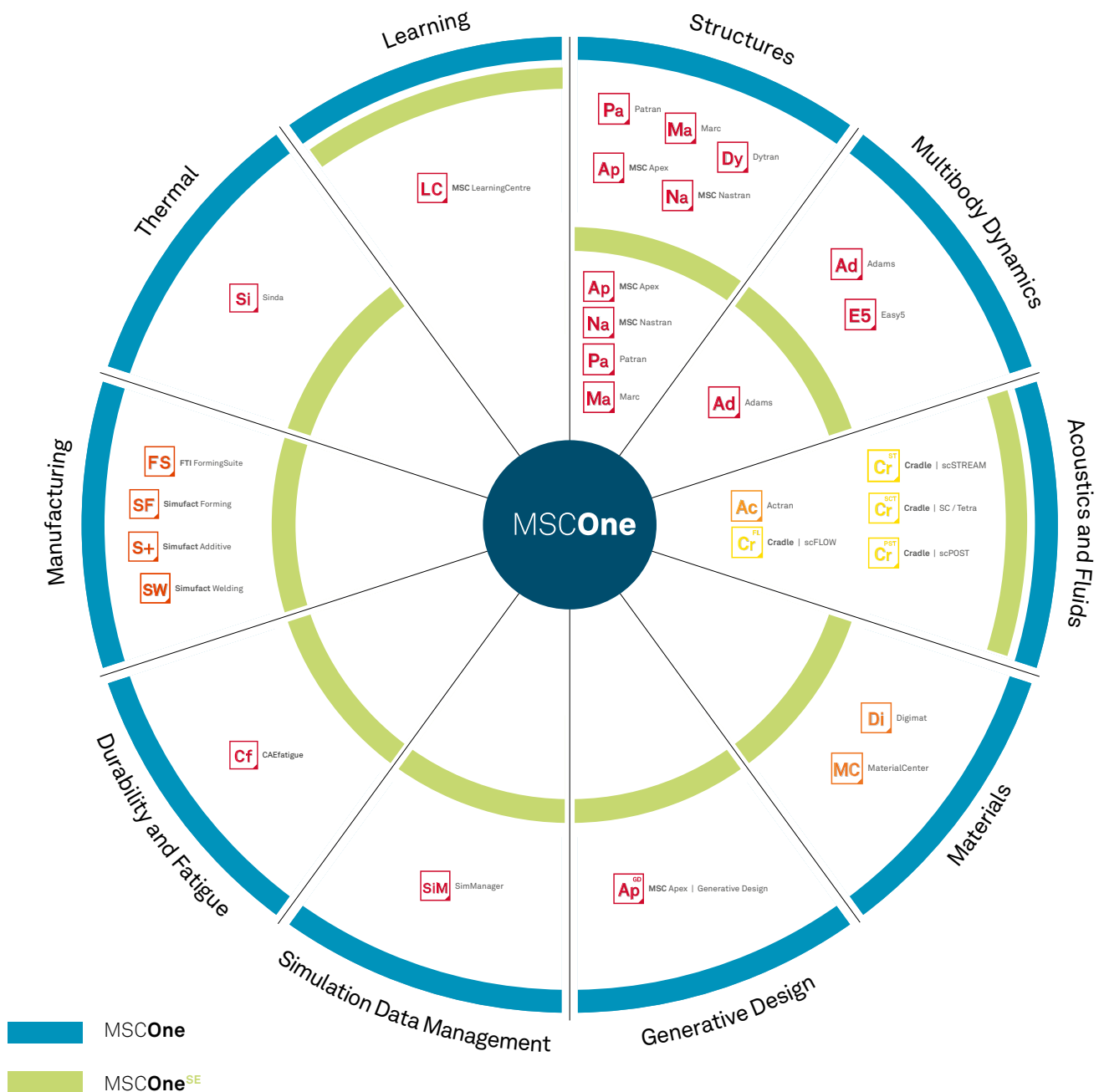
Enjoy the flexibility to allocate simulation resources to any team or site on premise or in the cloud, giving you greater agility to respond to engineering priorities.

	MSCOne ^{SE} Start Edition	MSCOne	MSCOne ^{XT} Extended Edition
Overview	Get going with flexible access to key software	Enjoy our full array of simulation software	Add-on partner solutions to take you further
Token pool size limit	60 tokens	No limit	Uses your MSCOne token pool
License type	Nodelocked (1 or 2 machines)	Network (Local to WW)	
Upgrade to MSCOne ^{XT} partner products	No	Yes	Access tiers to fit your all your simulation needs <small>Certain restrictions may apply</small>
MSCOneburst On-demand	No	Yes	
MSC e-learning	Yes	Yes	
	ENQUIRE	ENQUIRE	UPGRADE



Packed with all the simulation tools you need, and growing.

We are constantly updating, improving and adding to our portfolio. If you want to see what's currently included in MSCOne^{SE}, MSCOne or MSCOne^{XT}. Explore a smarter way to access simulation software at www.mscsoftware.com/mscone.





Hexagon is a global leader in sensor, software and autonomous solutions. We are putting data to work to boost efficiency, productivity, and quality across industrial, manufacturing, infrastructure, safety, and mobility applications.

Our technologies are shaping urban and production ecosystems to become increasingly connected and autonomous – ensuring a scalable, sustainable future.

MSC Software, part of Hexagon's Manufacturing Intelligence division, is one of the ten original software companies and a global leader in helping product manufacturers to advance their engineering methods with simulation software and services. Learn more at www.mscsoftware.com/mscone. Hexagon's Manufacturing Intelligence division provides solutions that utilise data from design and engineering, production and metrology to make manufacturing smarter.

Learn more about Hexagon (Nasdaq Stockholm: HEXA B) at hexagon.com and follow us [@HexagonAB](https://twitter.com/HexagonAB).

