

SCANCO

**Warehouse Management
Multi-Bin
Sage 100**

innovation
service
experience

vrakas/blum
computer consulting

For more information contact:

Vrakas/Blum Computer Consulting, Inc.

262.797.0400 | info@v-bcc.com | v-bcc.com

Saves warehouse space. Improves inventory quality, accuracy, and efficiency. Reduce inventory shrinkage and obsolescence.

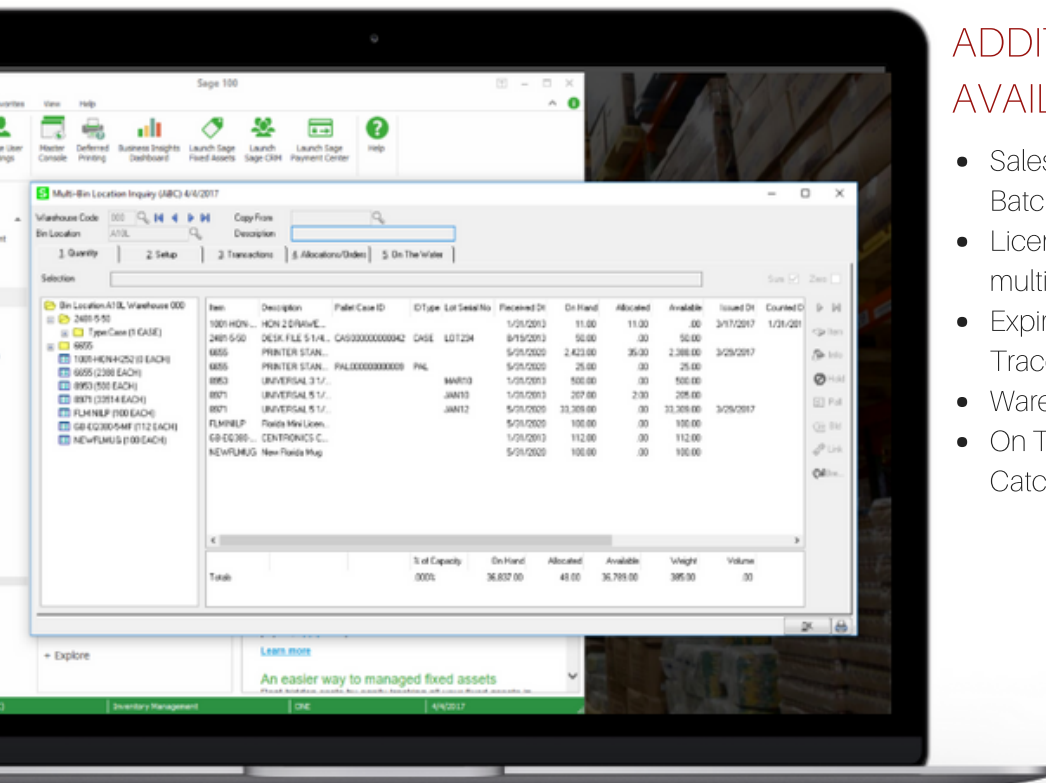
Scanco Multi-bin and Warehouse Management include the experience of 17 years integrated exclusively for Sage 100 ERP. It provides a seamless multi-bin and warehouse management system WMS functionality integrated for Sage 100 ERP. It is flexible to setup to get quick startup and simple design, and it can be setup or more advanced needs utilizing WMS features. The built-in Directed Picking and Directed Putaway features provide comprehensive options, so the system directs as you want to. It is compatible with most extended solutions, developer enhancements, and business object integration.

PREMIUM BASE SOFTWARE INCLUDES

- Multi-Bin Inventory
- Directed Picking
- S/O Auto Pre-Allocations
- Directed Put Away
- Hold, Customer Reserve & Pick Restrictions
- Wave Pick Sheets
- Invoice, Transfer, and Manufacturing Auto Allocations
- Business Object Interface (Boi),
- Custom Office Udfs
- V/I One Warehouse Hardware Integration
- Real-Time and Batch Location Replenishments

ADDITIONAL ADD-ONS AVAILABLE

- Sales Order Select by Fill Rate and Wave Batch Picking
- License Plate Pallet & Case Pack Inventory, multi-level
- Expiration Date Control & Vendor Lot Traceability
- Warehouse InTransit Transfers
- On The Water Inventory and Receiving Catch Weight



The integrated multi-bin tab provides a quick view of multi-bin inventory and quick inventory utilities that run by item. View quantity available in bin locations, by location type and region code. Bin Location maintenance for the quick inventory utilities that run by the location.



OEM
Partner

www.scanco.com | sales@scanco.com | 330.645.9959



MULTI-BIN FEATURES

Directed Picking and Allocations

Allocates inventory to direct the picker according to how you want to pick for an order and group of orders. Picking algorithms like FIFO, FEFO (*E) first expired first out, least quantity on hand and choices to deplete primary picking locations and other chosen areas ahead of others will save picking time and direct picking the goods you want to. With our (*W) shipping control add-on prioritizes inventory to certain customers, split by zone and to orders as you need them to.

Directed Put Away Dashboard

Get Real-Time advise and in Batches - directed putaway advises which inventory to rotate inventory to your pick areas and where to store goods received and produced. Locations provide for easy to set minimums, maximums, location capacities and zone and aisle storage preferences. (*P) Specific package settings optimizes storage of pallets, boxes and case packs. The built-in Dashboard makes it easy to view and change the system calculations, print putaway sheets and transfer inventory for you. Choose to use Real Time connection where the warehouse barcode units keep up stock in the pick locations.

Wave Pick Sheets

Saves time picking goods because wave pick sheets directs you through the warehouse in the way you want to pick goods. Picking in an aisle, the picker can pick from the left side and the right side in one pass, and you can perfectly go to each warehouse zone. Wave pick sheets can be printed for each sales order, group of sales orders, rotating inventory and replenishments. (*W) Shipping control offers split options for multiple pickers to pick.

License Plate Pallet and Case Pack Inventory

License Plate (*P) provides for mixed and same item pallets, containers and any case packs in inventory. The system automates the best pack to pick, and barcodes provides full details of items assigned to the ID. ID's can be nested within other ID's and can be received, produced, transferred, counted and sold. ID type codes improves inventory counts for cases and pallets. Warehouse barcode technology ease creation of pallets for shipments and storage using IDs.

Transfer and Rotate Inventory

Move inventory, pallets (*P) and case packs directly on the screen as you review by item and by where it is. Can select inventory individually and many items in a few clicks. Save time by moving allocations and shipments as you move inventory between locations. Inventory movements with barcode RF Handhelds reflect the inventory movements real time with history who and when the goods were moved.

Radio Frequency, Wireless, and Apple IOS Integration

Warehouse Automation provides full Distribution and Manufacturing barcode scanning in Sage 100. Real-time inventory transfers, rotate inventory and putaway in the warehouse and provides time save picking, shipping and receiving features. Build, select and break pallets and case packages (*P).

Hold, Pick Restrict and Non-Sellable Inventory

Hold individual inventory and location pick restriction so you can hold and release inventory the way you need to. You can insure goods reserved for customers go to the right orders; inventory returned or for quality inspection are held as you need. Release inventory on certain dates and put holds on pallets and individual goods. (*P) Pallet IDs restrict inventory and automate putaway advise for designated sales orders and work orders. Choose to reduce quantity available in sales order and MRP for non-sellable inventory.

*Features mentioned are the base product of Multi-bin and WMS software and its add-ons. *P is license plate, *W is wave batch shipping control, *E is expiration date vendor traceability*

WAREHOUSE ZONES

- Define Pick zone, Primary pick area, Overflow area, Staging areas.
- Create Warehouse Regions (zones) and Aisles to control good placement and improved grouping of locations. Define five Regions and Aisles to group goods in product lines and individual items.
- Define primary pick locations to individual items. Pick in increasing order and put away in decreasing order.

DIRECTED PICKING

Pick by order, wave picking and wave batch picking (*W)

Prioritize goods within Primary pick area, Pick zone, Overflow area, Staging areas.

Define picking algorithms FIFO, sequential, put away date, lot number, lot create date, lot expire date (FEFO)(*E), LIFO, user" defined.

Customize company-wide, by product line and by item.

Direct pick auto allocations for S/O distribution and Manufacturing B/M and W/O

DIRECTED PUT AWAY

- Define location capacity to improve put away advice.
- Choose to store goods in the same location or not.
- Define to store goods in Warehouse Regions and Aisles by Product Lines and by items.
- Advise to move goods to shipping for back orders.
- Put away advice from receiving, production completions and purchase order.

TRANSFERS

Transfer goods individually and for a group of items to another location. Transfers are immediate and full audit trail.

Transfer by location and by item. Can transfer any number of items in a locations in a few clicks.

Can move sales order and work order allocations along with transfer.

Control inventory location receipt date and issue date. Customizable from staging locations.

Transfer between warehouses and locations with grid based in I/M Transaction entry

Import transfers with Visual Integrator and BOI

PHYSICAL COUNTS

- Select by last counted by item and by when multi-bin inventory was last counted
- Group and select by warehouse regions and locations
- Print physical work sheets by locations and items
- Explode items in Pallet ID in count card and physical count entry(*P)
- Visual Integrator and BOI automation

LOCATION CAPACITY MANAGEMENT

- Location capacity computed by item volume and quantity in location
- Put Away evaluates location capacities and evaluates inventory stored in primary locations
- Replenishment and management reporting evaluates capacity for locations

REPORTS

- Stock status and valuation report
- Detail audit trail and allocation report
- Location capacity report reflects available locations by how full
- Allocation Report
- Put away report from staging and by purchase order and produced goods
- Primary location replenishment report advises replenishment by your rotation settings
- Pick sheet templates for sales order, bill of materials and work order
- Wave pick sheets by Bin Location and Bin Location Sort Code
- What Issued Report and Vendor Lot Traceability Report (*W)
- Pallet Case ID Tag Reports(*P)

AVAILABLE ADD-ONS

ELECT BY ORDER FILL RATE/WAVE BATCH PICKING (*W): Automate selection of sales orders by the fill rate, ship date and more. Prioritizes inventory for a customer priority code, ship complete options. Batch picking sheets to pick for a group of orders and split feature to divide picking. Transfers picks to staging locations.

EXPIRATION DATE CONTROL AND VENDOR LOT TRACEABILITY (*E): Lot and serial goods are improved with expiration date automation and tracing vendor lot numbers. Trace of raw materials goes through subassemblies, finished goods and sold to customers. Expire information provides FEFO use of materials and sale of goods. Limits goods by shelf life requirements by customer.

LICENSE PLATE - PALLET AND CASE PACK INVENTORY (*P): Integrated ID Numbers provides real, multi-level case pack, container and pallet inventory throughout the Sage 100 ERP system. Create user-defined packages, including case packs, master packs, and pallets of inventory. Build and Break packages to contain a group of any items or just a single item. Full directed picking and directed putaway.

IN-TRANSIT WAREHOUSE: Provides warehouse-to-warehouse tracking maintaining supply and demand for inbound and outbound warehouses

ON THE WATER INVENTORY AND RECEIVING: Provides ability to receive inventory in transit on-the-water and reconciles the actual receipt to the warehouse. Gives the ability to pre-book (pre-allocate) inventory to orders and manufacturing modules. Landed cost reconciles received cost and improves cost accuracy.

CATCH WEIGHT: Tracks and provides an alternate unit of measure and to sell by the weight sold.



About Scanco

Since 1989, Scanco has been a leading provider of supply chain automation software and services. Since our inception, we have focused on innovative warehouse management solutions with a unique technology-driven approach. Our solutions deliver unequaled efficiency and visibility for distribution and manufacturing companies around the globe.

From basic barcoding to the most complex distribution and manufacturing operations- Scanco software is positioned to grow with our customers ever changing business needs. We are focused on providing top-tier, fully integrated automation solutions built specifically for your ERP solution. Today, thousands of world-class distribution and manufacturing companies have automated their facilities with cutting-edge Scanco technology.

To learn more about our Sage solutions or to schedule a live product demonstration contact us at sales@scanco.com