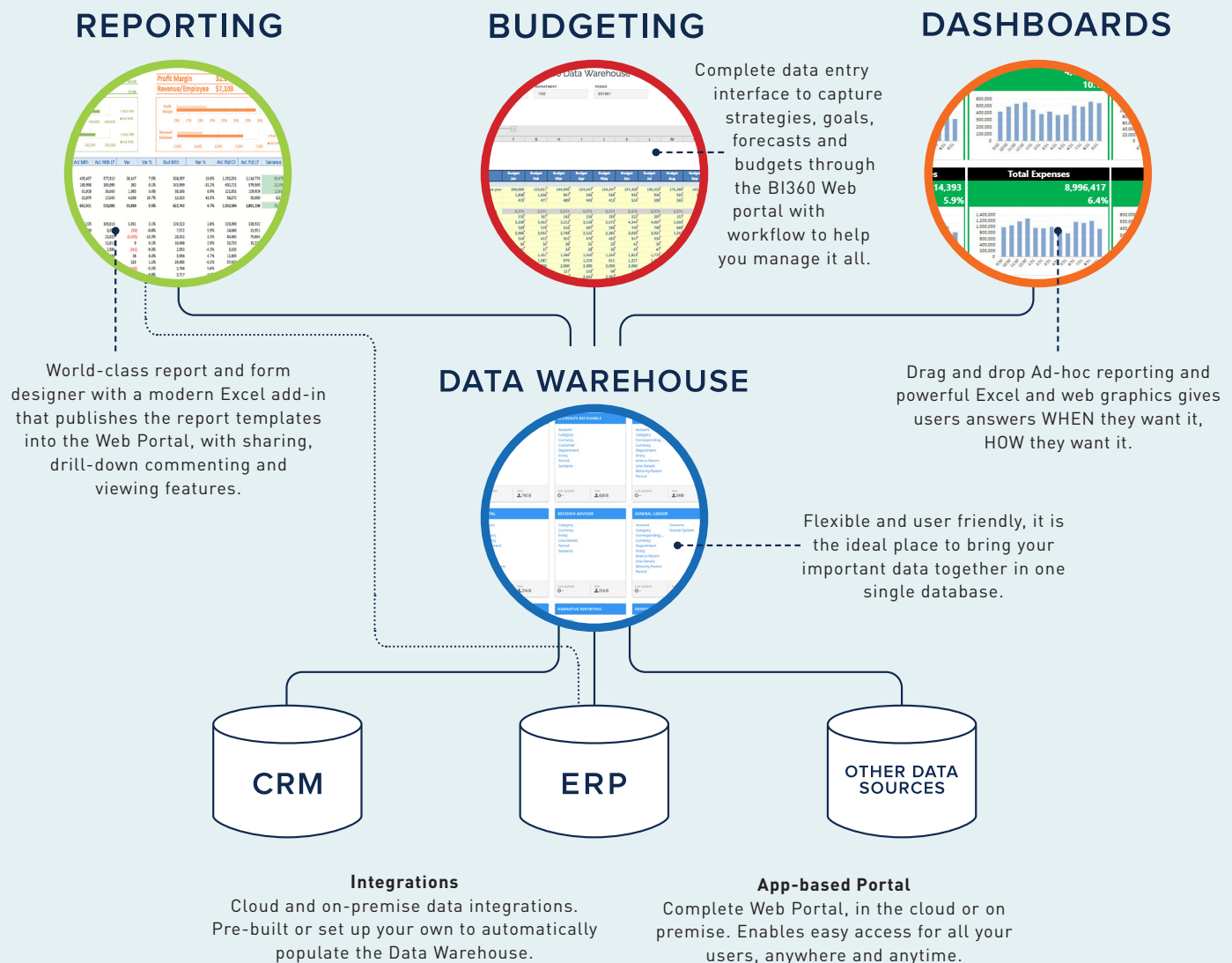


 BI360

# ENABLING WORLD-CLASS DECISIONS

Budgeting & Forecasting | Reporting & Consolidations  
Dashboards & Analysis | Data Warehouse

# SMART DECISIONS FROM ACROSS YOUR ORGANIZATION...ENABLED BY A DYNAMIC CLOUD PLATFORM...EXPERIENCE BI360!



## FASTER, BETTER DECISIONS DRIVE PERFORMANCE

BI360 with its complete, modern Web interface will give your organization the ideal corporate performance management platform to enable better and faster decision-making by automating and streamlining everything from strategy to forecasts, budgets, reports and analysis. User comments, workflow and automated email updates so that everyone can collaborate seamlessly and stay in the loop. BI360 is cloud-based and therefore deployed effortlessly.\*

\*On-premise version also available.

# EXAMPLES OF BI360 FEATURES

## BUDGETING & FORECASTING MODULE

- Excel Design/Web Delivery
- Automatic Spreading
- Workflow
- Unlimited Budget versions
- Templates & User Defined Input Forms
- Budget at any level of detail in any area
- Multi-year, month, week, day input
- What-if analysis and Modelling
- Allocations
- Text Comments

## DASHBOARDS & ANALYSIS MODULE

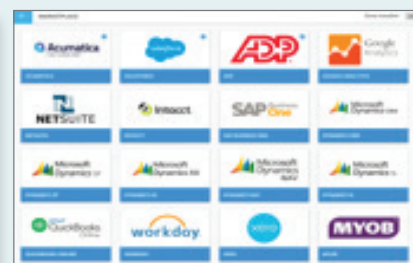
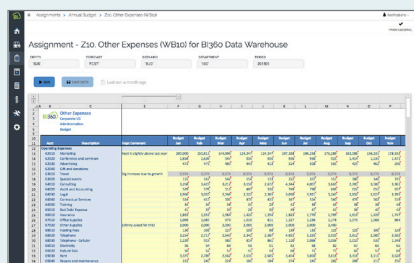
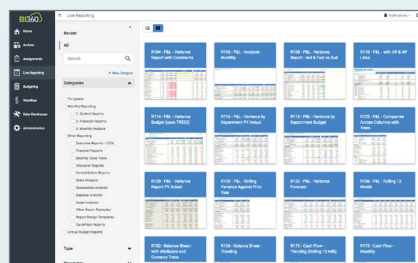
- Support for popular tools like Power BI
- Drag & drop ad-hoc analysis
- Excel Charts for visualizations
- Analyze Operational or Financial data
- Advanced KPI formulas
- Charts can be used inside Reports
- Integrated with BI360 Suite

## REPORTING & CONSOLIDATIONS MODULE

- Excel Design/Web Delivery
- Templates & User Defined Reports
- Financial statements, Operational Reports, etc.
- Workflow for Month End Close/Consolidations
- Report Books & Archive, MS Office Documents
- Allocations
- Currency Conversion
- Unlimited Organizational Trees
- Automatic and Manual Eliminations
- IFRS/GAAP and other Consolidation Adjustments

## DATA WAREHOUSE MODULE

- Easy configuration with User-friendly interface
- Automated data loading with BI360 ETL tool
- Combine Financial & Operational Data
- Easily view data in Data Explorer
- Easily add modules and dimensions
- Unlimited Trees on any dimension
- Microsoft SQL Azure/SQL Server based
- Migration destination for legacy ERP data





## INTERESTED IN MORE INFORMATION?

- Watch our demos at [www.solverglobal.com/videos](http://www.solverglobal.com/videos)
- Email [info@solverglobal.com](mailto:info@solverglobal.com) for a free copy of the Enabling World-Class Decisions book



## POPULAR ERP INTEGRATIONS

- Microsoft Dynamics/D365 (All – Cloud and On-premise)
- Acumatica
- Sage X3, 500, 300 and 100
- Quickbooks
- Sage Intacct
- SAP Business One & ByDesign
- NetSuite
- Sales Force
- BI360 Gateway for on-premise data sources

### CONTACT SALES

email: [info@solverglobal.com](mailto:info@solverglobal.com)  
 international locations: [solverglobal.com/locations](http://solverglobal.com/locations)  
[solverglobal.com](http://solverglobal.com)



*For more information contact:*

**Vrakas/Blum Computer Consulting, Inc.**  
 262.797.0400 | [info@v-bcc.com](mailto:info@v-bcc.com) | [v-bcc.com](http://v-bcc.com)

