



PRODUCT DATA SHEET

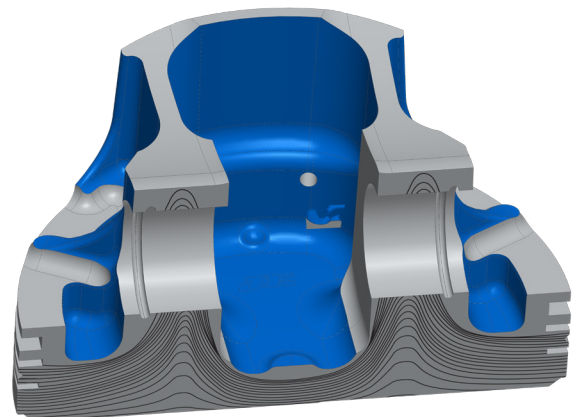
JE Pistons Introduces Ultra Series Piston Line for Sport Bike Applications

The industry-leading strength and manufacturing technology of JE's Ultra Series piston line has now been introduced to powersports applications. Proprietary Aligned Grain Flow Technology combined with thicker crown and ring lands, thermal barrier crown coating and upgraded wrist pins make these JE's strongest powersports pistons yet, all available off the shelf.



POWERSPORTS ULTRA SERIES PISTON FEATURES

- **Aligned Grain Flow Technology** - In-house forging has allowed JE to develop proprietary forging technology that directs the grain flow of the aluminum to flow around critical areas of the piston, increasing strength
- **Lateral Gas Ports** - Channeling combustion gases to the back of the top ring groove adds pressure behind the compression ring to keep it pushed against the cylinder, providing improved and more consistent ring seal, critical in boosted applications
- **Ultra-Thick Ring Lands** - Aids in maintaining ring stability in forced induction and high-horsepower N/A engines, contributing to consistent ring seal and consistent power
- **Thermal Barrier Crown Coating** - Ceramic coating on the piston crown greatly reduces heat transfer into the piston material, decreasing fatigue and improving longevity
- **Tuff Skirt** - Proprietary, Moly-based dry film skirt coating is applied in-house and reduces operating friction for better wear resistance
- **Accumulator Groove** - Provides additional volume to trap unwanted gases below the top ring to keep pressure low and ring seal and performance high
- **Double Pin Oilers** - Two oil channels fed into the pin bore maintain proper lubrication to improve wrist pin and pin bore wear resistance
- **Complete Kit** - Supplied with all necessary pistons, rings, wrist pins, and wire locks under one part number
- **Upgraded 9310 Wrist Pins** - Stronger, thicker wrist pin material designed to withstand additional loads of forced induction applications



ALIGNED GRAIN FLOW TECHNOLOGY

ULTRA SERIES POWERSPORTS SPORT BIKE APPLICATIONS

Kawasaki

2006 - 2011 ZX14

Part Num.	Displacement	Bore	Oversize	C/R	Ring Set #	Pin #	Lock #	Retail Kit Price
379432	1352cc	84mm	STD	9.5:1	JG1001-3307	787-2250-21-93C	787-050-MW	\$1,025.25
379433	1352cc	84mm	STD	13.5:1	JG1001-3307	787-2250-21-93C	787-050-MW	\$1,025.25
379434	1417cc	86mm	+2mm	13.5:1	XR8600	787-2250-21-93C	787-050-MW	\$1,025.25

2012 - 2019 ZX14

379432	1352cc	84mm	STD	10.1:1	JG1001-3307	787-2250-21-93C	787-050-MW	\$1,025.25
379433	1352cc	84mm	STD	14.1:1	JG1001-3307	787-2250-21-93C	787-050-MW	\$1,025.25
379434	1417cc	86mm	+2mm	14.1:1	XR8600	787-2250-21-93C	787-050-MW	\$1,025.25

Suzuki

1999 - 2007 GSX1300R Hayabusa

379435	1299cc	81mm	STD	13.5:1	JG1001-3189	787-2250-21-93C	787-050-MW	\$1,025.25
379436	1330cc	82mm	+1mm	13.5:1	JG1001-3228	787-2250-21-93C	787-050-MW	\$1,025.25
379437	1363cc	83mm	+2mm	13.5:1	JG1001-3268	787-2250-21-93C	787-050-MW	\$1,025.25
379438	1397cc	84mm	+3mm	13.5:1	JG1001-3307	787-2250-21-93C	787-050-MW	\$1,025.25
379439	1429cc	85mm	+4mm	13.5:1	JG1001-3346	787-2250-21-93C	787-050-MW	\$1,025.25

2008 - 2019 GSX1300R Hayabusa

379441	1340cc	81mm	STD	13.5:1	JG1001-3189	708-2250-18-TTC	708-050-MW	\$1,025.25
379442	1407cc	83mm	+2mm	13.5:1	JG1001-3268	708-2250-18-TTC	708-050-MW	\$1,025.25
379443	1441cc	84mm	+3mm	13.5:1	JG1001-3307	708-2250-18-TTC	708-050-MW	\$1,025.25



For additional product data or technical questions,
contact JProductdata@jepistons.com