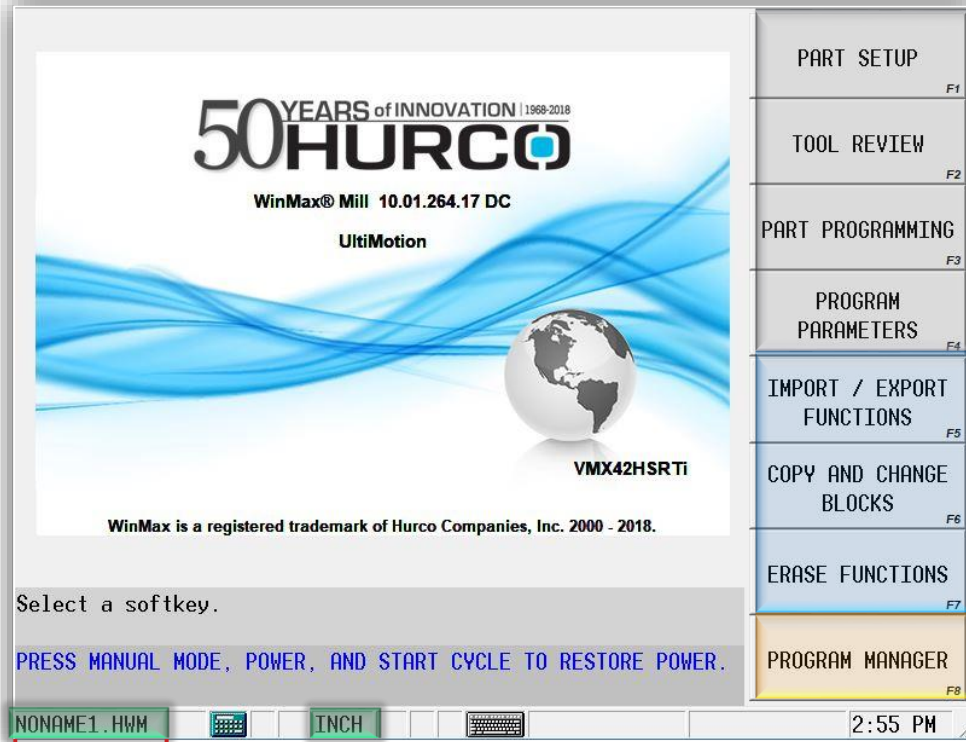


Navigating the Control

Seven (7) Main Screens

Seven (7) Main Screens



Input Screen

Everything necessary to setup, edit, and execute the active program.

These keys are for UltiMax users to feel comfortable inside WinMax.

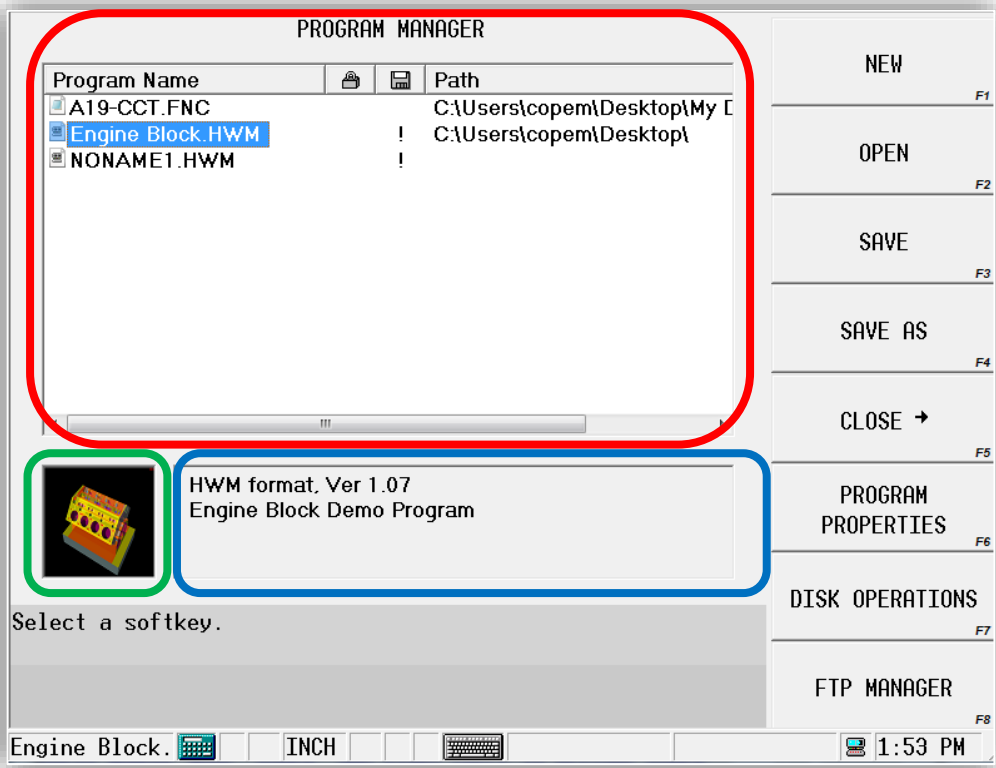
Used for program and file manipulation.

Program Units

Active program

Seven (7) Main Screens

Program Manager

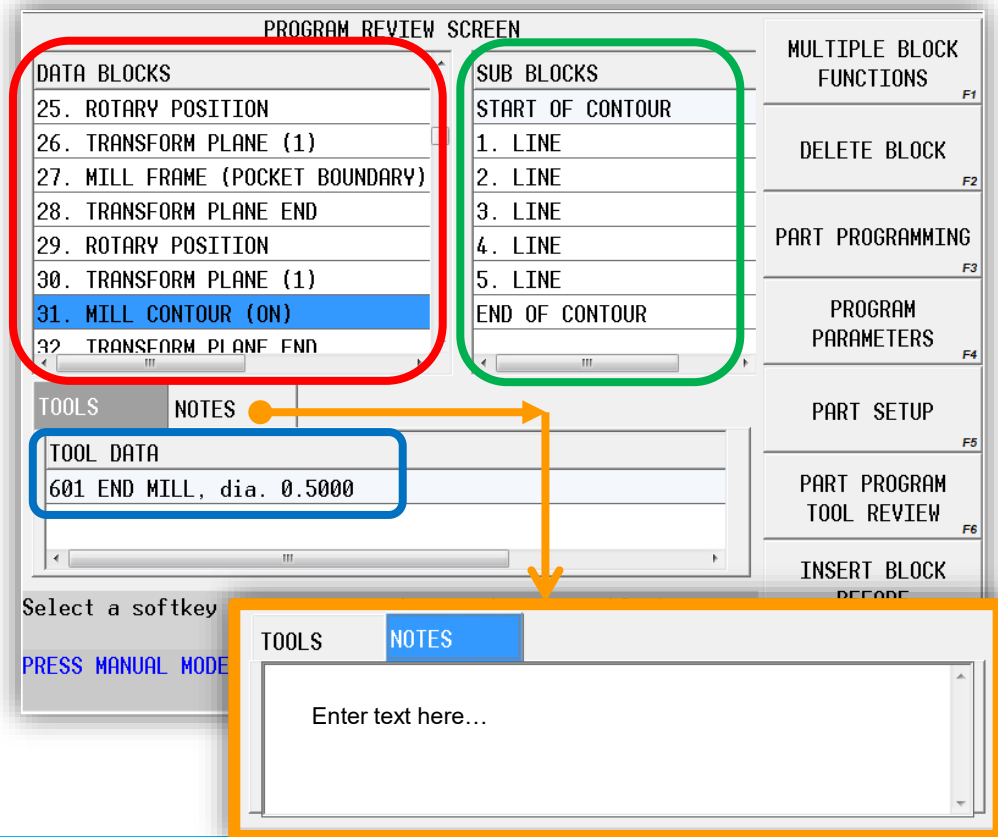


- **Program Manager Window:** there are many visual references available in the program manager window
- **Snapshot:** image is stored with the program.
- **Description:** text can be entered into the description box.

Seven (7) Main Screens

Program Review Screen

- **Data Blocks:** a display of the current blocks that make up the program.
- **Sub Blocks:** the lines & arcs type of data used in each individual program block (if applicable).
- **Tool Data:** the tool used in a particular block in the program.
- **Notes:** tab available for the operator to add notes for setup, etc...



Seven (7) Main Screens

Tool Review Screen

- **Works Like a Setup Sheet**

- Tool numbers and description displayed.
- Highlighted tools display blocks used in program.
- Uncheck box to see all tools in library.

PART PROGRAM TOOL REVIEW

Show only used tools

TOOL	LOCATION	DESCRIPTION
1	Manual	CENTER DRILL, dia. 0.1250
2	Manual	DRILL, dia. 0.2500

PART SETUP F1

TOOL SETUP F2

PART PROGRAMMING F3

PROGRAM PARAMETERS F4

TOOL CHANGE REVIEW SCREEN F5

MATCH TOOLS F6

ADD AS MANUAL TOOL F7

EXIT F8

BLOCK	DESCRIPTION
3 / 1	HOLES-Center Drill
8 / 1	HOLES-Center Drill

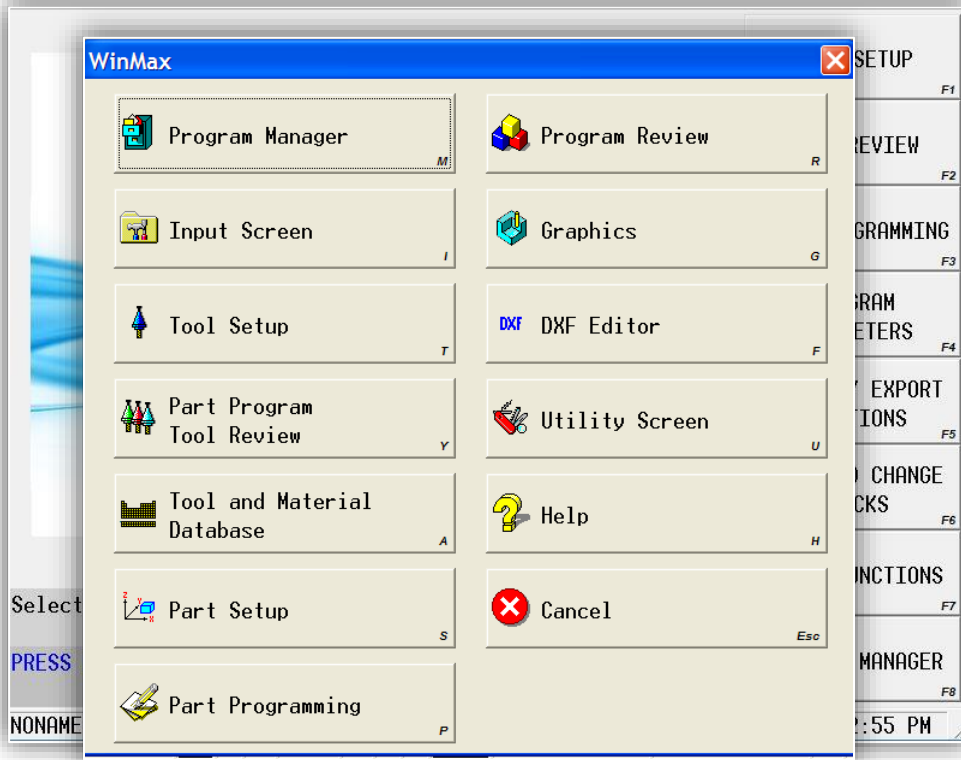
Toggle between showing all tools, or only tools that are used in current part program.

Seven (7) Main Screens

Auxiliary Screen

- **Auxiliary Functions:**

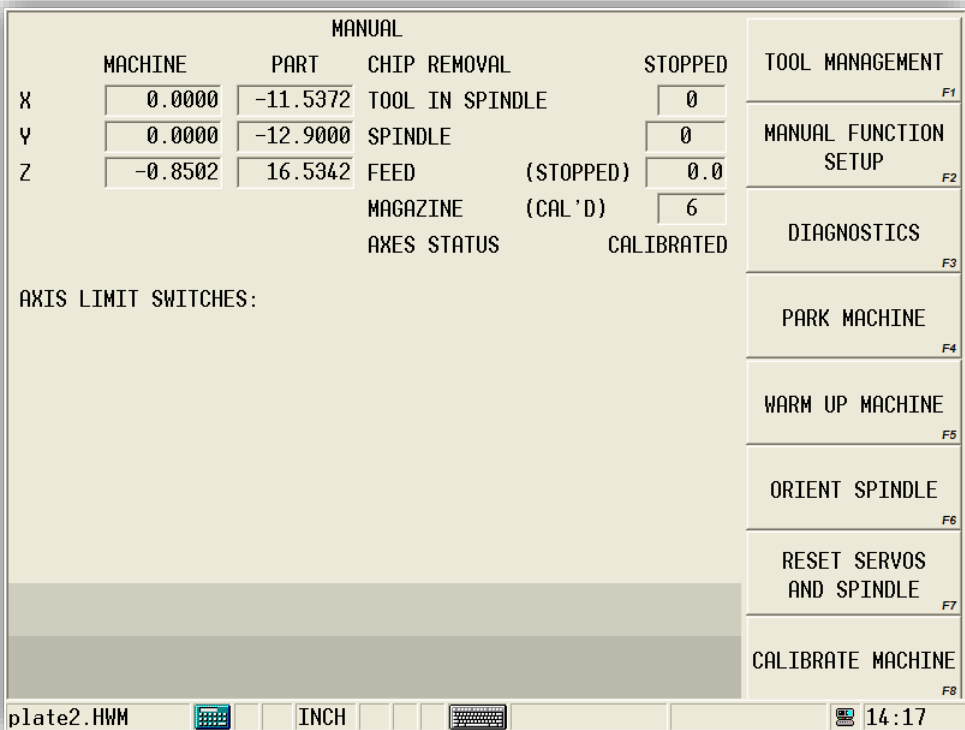
- used to access special screens.
- quick access buttons for setup and programming screens.



Seven (7) Main Screens

Manual Screen

- **Tool Management:**
 - used for toolchanges and ATC map manipulation.
- **Manual Function Setup:**
 - access to manual functions such as: spindle speed, manual rapid feed, manual rapid move.
- **Other Manual Functions:**
 - Park Machine; ATC & Machine Diagnostics; Machine Warm-up; and machine Calibration.



Seven (7) Main Screens

Help Screen

- **Content Sensitive:**
 - should pop-up with current task related information.
- **Searchable:**
 - using the index tab, search the help data by entering content relevant information.
- **Clickable Links:**
 - all text links can be clicked to direct the user to more content relative information.

