



The Industry's
Most Flexible
Control

- ★ Industry Standard NC
- ★ Conversational
- ★ NC/Conversational Merge

WinMax®

NEW FEATURE: 3D Import

With the addition of 3D Import to the Hurco control, you can go from "solid to part" seamlessly – eliminating the need for extra steps.

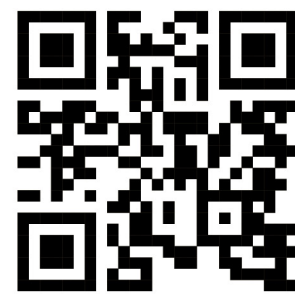
Hurco engineers have invented 3D Import, which includes 3D DXF technology that displays all geometry that the CAD system outputs, including splines. With 3D DXF, simply select the bottom of a contour, and the Z-axis depths will also be automatically input into the conversational block.



» From print to part to profit.

No matter which type of programming you choose, the Hurco control is the most flexible – and fastest – from print to part in the industry.

HURCO[®]
mind over metal[®]



For more information scan the QR code
or visit HURCO.com/MAX5

HURCO.COM

MACHINING CENTERS / TURNING CENTERS / 5-AXIS / DOUBLE COLUMN / BORING MILLS

Hurco Companies, Inc. | One Technology Way | PO Box 68180 | Indianapolis, IN 46268 | 800.634.2416 | HURCO.com

T499 - 0818 Rev C OP2k

Industry-Leading Control Specifications

- » 4GB RAM Memory
- » 2.7 GHz Dual Core Processor
- » 128GB Solid State Hard drive
- » Up to 4,000 bps Processing Speed

Designed and built for machinists.

The MAX5 Hurco control is the epitome of user-centric design. Based on the feedback from customers who participated in multiple usability tests of the initial MAX5 console design, we made more than 80 improvements. The ergonomic design of the MAX5 combined with its industry-leading technical specifications maximize productivity, which ultimately helps our customers increase their profit margins.

The Industry's
Most Flexible
Control

- ★ Industry Standard NC
- ★ Conversational
- ★ NC/Conversational Merge

WinMax®

Remote jog with LCD Digital Read Out

lets you store data from the pendant

```
>TOOL #2
END MILL
DIAMETER: 0.2500+
ABS LENGTH: 4.2426
DIAM WEAR: 0.0000

MAN PSU + +
TSU WOF AWO
```

» Modes such as part setup + tool setup are available from jog units with LCD option

» Integrated flashlight

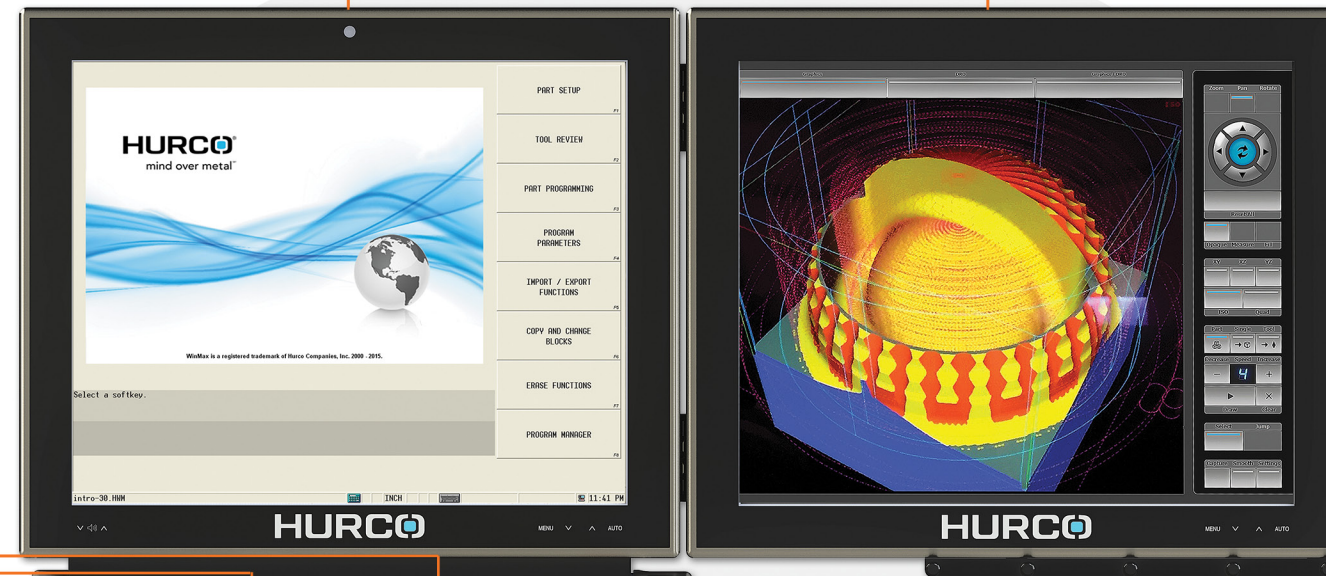
» Magnetic feet

» Flashlight toggle button

» Wireless remote jog unit option

» 19-inch touch screen LCD with three view options.

» Webcam



» Additional coolant + air controls

» Dual USB ports



Full graphics screen

Large DRO with mini graphics

Large graphics with mini DRO



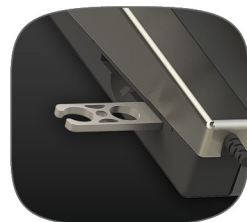
» Override knobs with convenient one-press presets



» Buttons designed with tactile cues for enhanced usability



» Adjustable-angle keypad + Adjustable height control arm



» Flip-Out hook for hanging air nozzles + other tools



» Retractable QWERTY keyboard with trackball