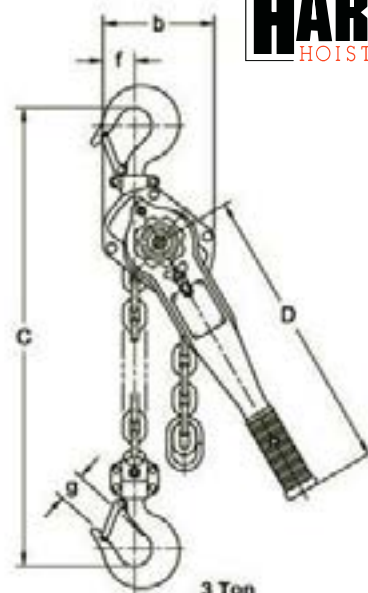


Hoists, Trolleys & Beam Clamps





HARRINGTON
HOISTS AND CRANES

Harrington Hoist Lever Chain Hoist
Model: LB

Harrington's LB lever hoists combine easy operation with a compact, low headroom design that easily handles real-world demands. Rated the number 1 selling lever hoist in the U.S., these hoists can be used horizontally, vertically, inverted or at any other load angle and have the strength to get the job done.

- Capacities 3/4 Ton through 9 Ton
- Compact design makes it a perfect fit for use in tight quarters
- Steel body is more durable yet lighter weight than die cast aluminum models
- Revolutionary freewheeling offers one handed operation
- 360 degree handle rotation and pivot & swivel top hook for easy rigging
- Single load chain through 3 Tons

HOISTS

Capacity (tons)	Hoist Product Code	Headroom C (in.)	Std. Lift (ft)	Pull to Lift Load (lbs.)	D*	a	b	e	f	g	Load Chain Diameter (mm) x Chain Fall Lines	Net Weight (lbs)	Shipping Weight Approx. (lbs)	Weight for add'l 1 ft. of Lift (lbs.)
3/4	LB0008	11.0	5	54	9.6	5.7	4.7	3.8	1.6	0.9	5.6 x 1	13	13	0.5
1	LB010	11.8	5	72	9.6	5.7	4.7	3.8	1.6	1.1	5.6 x 1	13	14	0.5
1-1/2	LB015	13.2	5	64	10.4	6.3	5.0	3.9	1.5	1.3	7.1 x 1	18	18	0.7
2	LB020	14.8	5	59	10.4	6.8	5.9	4.0	1.8	1.4	8.8 x 1	25	26	1.1
2-3/4	LB028	14.8	5	81	10.4	6.8	5.9	4.0	1.8	1.4	8.8 x 1	25	26	1.1
3	LB030	15.6	5	69	16.3	7.5	6.3	4.4	1.8	1.5	10.0 x 1	33	35	1.5
6	LB060	21.3	5	72	16.3	7.5	8.5	4.4	2.3	2.0	10.0 x 2	57	60	3.2
9	LB090	26.8	5	78	16.3	7.5	12.0	4.4	4.1	2.9	10.0 x 3	88	93	4.7

Harrington Hoist Hand Chain Hoist
Model: CB



Harrington's CB hand chain hoists combine heavy duty construction with top-of-the-line internal components for the most demanding industrial applications. These hoists are built to withstand rugged, day-in, day-out use and they are easily maintained and repairable making them the perfect hoist for a long-lasting fleet of industrial products.

- Capacities 1/2 Ton through 100 Ton
- All-steel construction for extreme durability
- Low headroom and lightweight design for ease of use
- Slip clutch prevents lifting damaging loads beyond rated capacity
- Limited number of parts simplifies and reduces maintenance



Capacity (tons)	Hoist Product Code	Headroom C (in.)	Std. Lift (ft)	Pull to Lift Load (lbs.)	a	b	d	e	f	g	x	Overhaul Ratio	Load Chain Diameter (mm) x Chain Fall Lines	Net Weight (lbs)	Shipping Weight Approx. (lbs)	Weight for add'l 1 ft. of Lift (lbs.)
1/2	CB005	11.2	8	48	6.2	6.3	8.0	2.7	3.9	1.1	3.5	25	5.0 x 1	22	23	1.0
1	CB010	11.6	8	58	6.4	6.3	8.0	2.8	3.9	1.1	4.0	43	6.3 x 1	25	26	1.2
1-1/2	CB015	13.8	8	70	6.7	7.2	8.0	3.1	4.4	1.3	4.7	57	7.1 x 1	32	33	1.4
2	CB020	14.8	8	72	7.2	8.0	8.0	3.4	4.9	1.4	4.9	70	8.0 x 1	41	43	1.6
2-1/2	CB025	16.5	8	66	7.6	9.2	8.0	3.6	5.6	1.6	5.4	99	9.0 x 1	56	58	1.8
3	CB030	20.1	8	72	6.7	9.3	8.3	3.1	6.4	1.7	5.8	114	7.1 x 2	49	53	2.1
5	CB050	23.6	8	68	7.6	11.1	10.0	3.6	7.6	1.8	6.8	198	9.0 x 2	85	89	3.0
8	CB080	30.3	8	75	7.6	14.7	10.3	3.6	10.0	2.9	10.8	297	9.0 x 3	124	131	4.2
10	CB100	29.9	12	72	7.6	17.2	14.9	4.4	12.1	2.9	11.6	396	9.0 x 4	186	203	5.5
15	CB150	40.2	12	74	10.6	19.4	15.9	4.7	13.3	3.1	12.6	594	9.0 x 6	346	368	7.9
20	CB200	46.5	12	72 x 2	14.7	29.4	16.3	7.4	14.7	3.2	13.8	396 x 2	9.0 x 8	524	678	10.9
30	CB300	51.2	12	86 x 2	15.9	29.4	16.3	8.0	14.7	4.1	15.7	495 x 2	9.0 x 10	690	889	13.3
40	CB400	58.3	12	86 x 2	19.8	29.9	16.6	9.9	15.0	4.1	17.5	693 x 2	9.0 x 14	1068	1398	18.2
50	CB500	61.4	12	98 x 2	21.4	31.3	16.6	10.7	15.7	4.4	18.4	792 x 2	9.0 x 16	1422	1752	20.6
80	CB800	100.8	12	86 x 4	29.9	55.2	15.9	13.8	27.6	5.1	-	693 x 4	9.0 x 28	3392	-	36.3
100	CB1000	125.2	12	98 x 4	31.3	56.9	14.6	15.7	28.4	7.3	-	792 x 4	9.0 x 32	6525	-	41.2



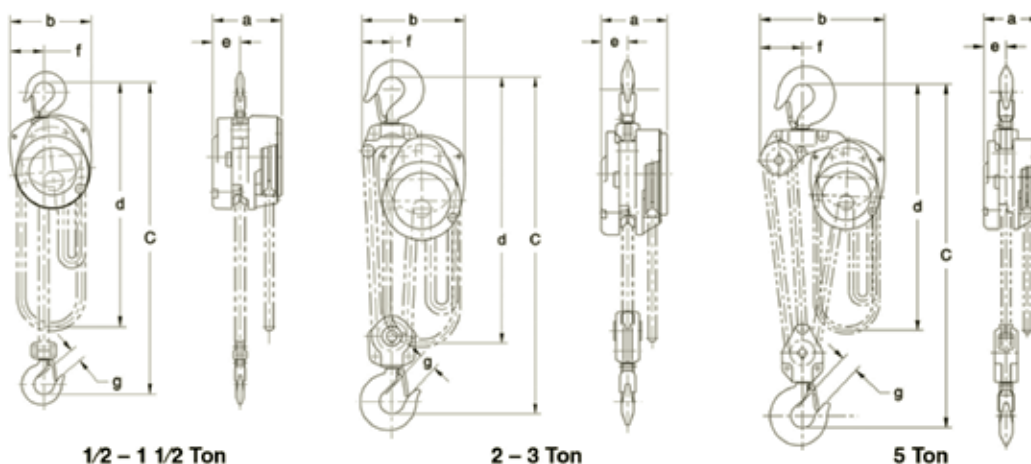
Harrington Hoist Hand Chain Hoist
Model: CF

Harrington's CF hand chain hoists were designed for portability and durability. These hoists are the economical and practical choice for efficient, trouble-free service. The CF model is a long-lasting construction grade hoist that offers the best value in a hand chain hoist.

- Capacities 1/2 Ton through 5 Ton
- Rugged die-cast aluminum body provides exceptional strength
- Pre-lubricated sealed ball bearings for long life and low maintenance
- Weston-style load brakes for positive braking action
- Designed with fewer parts to simplify maintenance



Capacity (tons)	Hoist Product Code	Head-room C (in.)	Std. Lift (ft)	Pull to Lift Load (lbs.)	a	b	d	e	f	g	Overhaul Ratio	Load Chain Diameter (mm) x Chain Fall Lines	Net Weight (lbs)	Shipping Weight Approx. (lbs)	Weight for add'l 1 ft. of Lift (lbs.)
1/2	CF005	12.8	10	60	5.4	5.9	10	2.0	2.4	1.1	19	5.0 x 1	24	26	1.0
1	CF010	14.6	10	72	5.8	6.9	10	2.3	2.9	1.1	31	6.3 x 1	29	31	1.2
1-1/2	CF015	17.3	10	84	6.0	8.0	10	2.4	3.4	1.3	41	7.1 x 1	40	42	1.4
2	CF020	20.1	10	80	5.8	8.0	10	2.3	2.3	1.4	63	6.3 x 2	47	49	1.8
3	CF030	23.2	10	92	6.0	9.4	10	2.4	2.7	1.7	81	7.1 x 2	62	66	2.1
5	CF050	24.4	10	92	6.0	13.5	10	2.4	4.5	1.8	134	7.1 x 3	82	86	2.9



1/2 - 1 1/2 Ton

2 - 3 Ton

5 Ton

Harrington Hoist Push Trolleys
Model: PT
Push trolley capacities from 1/2 through 10 Ton

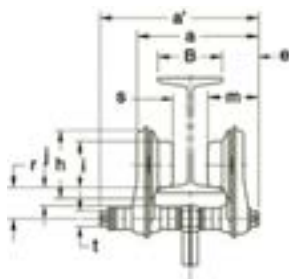


Harrington push trolleys help you maneuver easily on your most demanding lifting operations. They feature specially designed contoured wheels that ensure reliable tracking, and their sealed ball bearings avoid maintenance hassles and provide smooth operation.

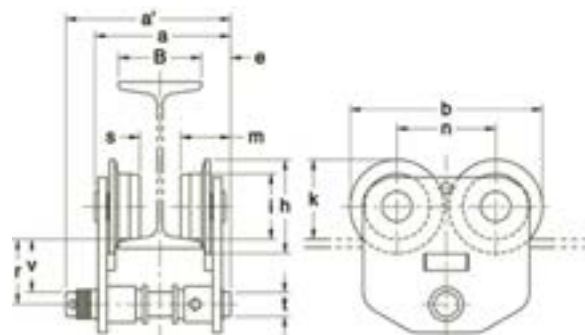
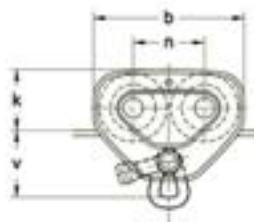
- Get sure trolley tracking with specially designed contoured wheels that fit both tapered and flat-flange beams.
- Maintenance-free, sealed precision ball bearings are lubed-for-life and offer smooth movement, with low friction and long life.
- Get strength and rigidity from a lightweight, compact design.
- Easily adjust trolley to fit a wide variety of beam flange widths.
- Load equalizing suspension distributes the load to all wheels.
- Wide standard flange ranges reduce the need for optional extended shaft kits.
- Match the needs of the job with a variety of trolley hoist suspenders.



Capacity (tons)	Hoist Product Code	Min. Radius for curve (in.)	Flange Width Adjustability B (in.)		a max (in)	a' (in)	b (in)	e (in)	h (in)	i (in)	j (in)	k (in)	m (in.)	n (in.)	r (in.)	s (in.)	t (in.)	v (in.)	Net Weight (lbs)	Shipping Weight Approx. (lbs)
			Standard	Option																
1/2	PTF2005	13.8	2.28 to 4.00	4.01 to 8.00 or 8.01 to 12.00	6.8	8.0	7.2	1.8	3.2	2.36	0.8	3.0	2.7	3.3	1.5	B-1.8	0.87	3.7	9	9
1	PTF2010	17.7	2.28 to 5.00	5.01 to 8.00 or 8.01 to 12.00	8.5	9.8	9.3	2.2	4.2	2.80	1.1	3.7	3.1	4.4	2.0	B-1.9	0.98	4.2	15	16
1-1/2 - 2	PTF2020	21.7	3.23 to 6.02	6.03 to 12.00	10.4	11.8	11.0	2.7	5.0	3.35	1.4	4.4	3.8	5.2	2.4	B-2.3	1.26	5.1	29	30
2-1/2 - 3	PTF2030	25.6			11.0	12.6	12.8	3.1	5.8	3.94		5.3	4.3	6.0	2.7		1.42	6.7	46	47
5	PTF2050	78.7	4.92 to 7.02	7.03 to 12.00	10.7	11.7	13.7	2.1	5.7	4.65		5.7	3.6	7.0	4.6	B-3.0	1.73	3.7	95	98
8	PT080	118.1	5.50 to 8.66	8.67 to 12.00	14.4	17.6	18.9	4.1	7.3	6.10	---	6.7	5.9	7.7	6.0	B-3.6	2.76	4.6	212	254
10	PT100																			



1/2 - 3 Ton



5 - 10 Ton

Harrington Hoist Geared Trolley Model: GT

Geared trolley capacities from 1/2 through 20 Ton



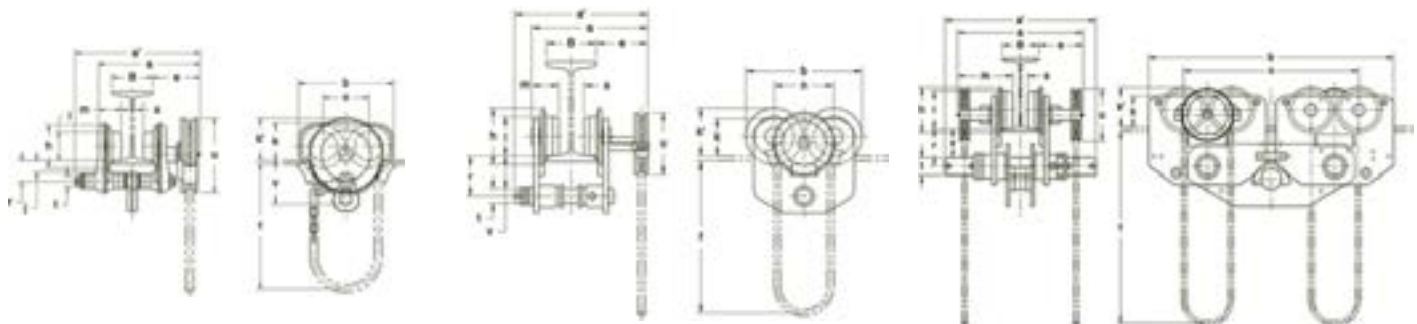
Harrington geared trolleys help you maneuver easily on your most demanding lifting operations. They feature specially designed contoured wheels that ensure reliable tracking, and their sealed ball bearings avoid maintenance hassles and provide smooth operation.

- Get sure trolley tracking with specially designed contoured wheels that fit both tapered and flat-flange beams.
- Maintenance-free, sealed precision ball bearings are lubed-for-life and offer smooth movement, with low friction and long life.
- Get strength and rigidity from a lightweight, compact design.
- Easily adjust trolley to fit a wide variety of beam flange widths.
- Load equalizing suspension distributes the load to all wheels.
- Wide standard flange ranges reduce the need for optional extended shaft kits.
- Match the needs of the job with a variety of trolley hoist suspenders.



Capacity (tons)	Hoist Product Code	Min. Ra- dius for curve (in.)	Flange Width Adjustability B (in.)		a max (in)	a' (in)	b (in)	e (in)	f*	h (in)	i (in)	j (in)	k (in)	k' (in.)	m (in.)	n (in.)	r (in.)	s (in.)	t (in.)	u (in.)	v (in.)	Net Weight (lbs)	Ship- ping Weight Approx. (lbs)	
			Stan- dard	Option																				
1/2 - 1	GTF2010	17.7	2.28 to 4.00	5.01 to 8.00 or 8.01 to 12.00	10.8	12.2	9.3	4.6	8	4.2	2.80	1.1	3.7	4.2	2.2	4.4	2.0	B-1.9	0.98	7.2	4.2	24	25	
1-1/2 - 2	GTF2020	21.7	3.23 to 6.02	6.03 to 12.00	13.7	15.2	11.0	6.1		5.0	3.35	1.4	4.4	4.3	2.8	5.2	2.4	B-2.3	1.26		5.1	37	39	
2-1/2 - 3	GTF2030	25.6	4.92 to 7.02	7.03 to 12.00	14.1	15.7	12.8	6.2		5.8	3.94		5.3	4.5	3.1	6.0	2.7	B-3.0	1.42		6.7	55	57	
5	GTF2050	78.7	5.50 to 8.66	8.67 to 12.00	14.8		13.7	6.1		5.7	4.65	--	5.7	5.2	3.2	7.0	4.6		B-3.6	1.73		3.7	104	107
8	GT080	118.1			17.4	20.6	18.9	7.0	12	7.3	6.10		6.7	6.5	8.9	28.2	6.0	B-3.6		2.76	8.4	4.6	218	260
10	GT100																8.0							
15	GT150	∞			22.7	21.3	39.8													3.15		6.3	534	615
20	GT200																							

HOISTS



1/2 - 3 Ton

5 - 10 Ton

15 - 20 Ton

Harrington Hoist NER/ER Electric Chain Hoists with Hook and Lug Suspensions Model: NER/ER

Harrington's (N)ER enhanced features three phase electric chain hoists are equipped with a low headroom, lightweight body with a fan-cooled motor, standard thermal motor protection and a count hour meter for preventive maintenance. A secondary mechanical load brake is an additional features on ER models only.

- Smart Limit option is available on NER capacities 1/8 through 5 Ton
- 60 minute, H4 rated motor for the most demanding applications
- "The Guardian" Smart Brake Technology revolutionary DC current motor brake with electrical failsafe design and 10 year warranty
- Adjustable dual speed via under-the-cover variable frequency drive
- All standard models are UL listed to UL 1340 "Standard for Hoists"
- Completely sealed body suitable for harsh indoor or outdoor environments- IP55 rated
- Plug in pendant and power supply cords save time on set up and maintenance
- Super strength, nickel-plated load chain is corrosion and wear resistant
- 5 or 6 pocket load sheave improves chain life and promotes smooth lifting

HARRINGTON

HOISTS AND CRANES



Capacity (tons)	Product Code	Head-room C (in.)	Std. Lift (ft)	Push Button Cord L (ft)	Lifting Speed (ft/min)	Lifting Speed Min (ft/ min)	Lifting Speed Max (ft/ min)	Lifting Motor 3 Phase 60 Hz			Load Chain Diameter (mm) x Chain Fall Lines	Net Weight		Weight for ad- ditional one ft of lift (lbs)
								Output (Hp)	Rated Current (amps)					
									@208-230V	@460V				
1/8	(N)ER001H	13.8	10	8.2	55			0.75	3.4	1.7	4.3 x 1	60	62	0.28
1/8	(N)ER001HD	13.8	10	8.2		9	55	0.75	3.6	1.8	4.3 x 1	60	64	0.28
1/4	(N)ER003H	14.6	10	8.2	53			1.2	4.8	2.5	6.0 x 1	79	82	0.54
1/4	(N)ER003HD	14.6	10	8.2		9	53	1.2	5.1	2.7	6.0 x 1	77	82	0.54
1/4	(N)ER003S	13.8	10	8.2	36			0.75	3.4	1.7	4.3 x 1	60	62	0.28
1/4	(N)ER003SD	13.8	10	8.2		6	36	0.75	3.6	1.8	4.3 x 1	60	64	0.28
1/2	(N)ER005L	14.6	10	8.2	15			0.75	3.4	1.7	6.0 x 1	71	79	0.54
1/2	(N)ER005LD	14.6	10	8.2		2.5	15	0.75	3.6	1.8	6.0 x 1	68	79	0.54
1/2	(N)ER005S	14.6	10	8.2	29			1.2	4.8	2.5	6.0 x 1	79	82	0.54
1/2	(N)ER005SD	14.6	10	8.2		5	29	1.2	5.1	2.7	6.0 x 1	77	82	0.54
1	(N)ER010L	16.9	10	8.2	14			1.2	4.8	2.5	7.7 x 1	104	110	0.89
1	(N)ER010LD	16.9	10	8.2		2.5	14	1.2	5.1	2.7	7.7 x 1	99	108	0.89
1	(N)ER010S	16.9	10	8.2	28			2.4	8.6	4.2	7.7 x 1	119	119	0.89
1	(N)ER010SD	16.9	10	8.2		4.5	28	2.4	9.1	4.5	7.7 x 1	115	117	0.89
1-1/2	(N)ER015S	20.1	10	8.2	18			2.4	8.6	4.2	10.2 x 1	159	170	1.6
1-1/2	(N)ER015SD	20.1	10	8.2		3	18	2.4	9.1	4.5	10.2 x 1	159	172	1.6
2	(N)ER020C	27.8	10	8.2	7			1.2	4.8	2.5	7.7 x 2	130	134	1.8
2	(N)ER020CD	27.8	10	8.2		1	7	1.2	5.1	2.7	7.7 x 2	123	132	1.8
2	(N)ER020L	22.6	10	8.2	14			2.4	8.6	4.2	10.2 x 1	161	174	1.6
2	(N)ER020LD	22.6	10	8.2		2.5	14	2.4	9.1	4.5	10.2 x 1	161	174	1.6
2	(N)ER020S	23.2	10	8.2	28			4.7	16.4	7.9	10.2 x 1	201	198	1.6
2	(N)ER020SD	23.2	10	8.2		4.5	28	4.7	17.3	8.3	10.2 x 1	196	203	1.6
2-1/2	(N)ER025S	24.6	10	8.2	22			4.7	16.4	7.9	11.2 x 1	227	225	1.9
2-1/2	(N)ER025SD	24.6	10	8.2		3.5	22	4.7	17.3	8.3	11.2 x 1	218	231	1.9
3	(N)ER030C	32.9	10	9.2	17			4.7	16.4	7.9	10.2 x 2	234	234	3.2
3	(N)ER030CD	32.9	10	9.2		3	17	4.7	17.3	8.3	10.2 x 2	229	238	3.2
3	(N)ER030L	26.0	10	8.2	16			4.7	18.3	9.2	12.5 x 1	256	256	2.3
3	(N)ER030LD	22.6	10	8.2		6	17	4.7/6.1	19.6/9.4	9.8/4.7	12.5 x 1	300	300	2.3
5	(N)ER050L	33.5	10	9.2	11			4.7	16.4	7.9	11.2 x 2	289	284	3.8
5	(N)ER050LD	33.5	10	9.2		2	11	4.7	17.3	8.3	11.2 x 2	280	293	3.8

For exact dimensions, please contact sales team.

Harrington Hoist SNER Electric Chain Hoists
with Hook and Lug Suspensions and Motorized, Push and Geared Trolleys
Model: SNER



Harrington's SNER electric chain hoists are built for extreme duty applications that require single phase power. A hoist with a 60 minute, H4 duty rated motor is revolutionary and unmatched in a single phase offering. Maintenance friendly features include a unique chain guide, hinged control panel, sealed housing and durable load sheave. For beam travel requirements couple with SMR motorized, PT manual push and GT manual geared trolleys.

- SSNER, SNERM, SNERP, SNERG capacities 1/4 Ton through 3 Ton
- 60 minute, H4 rated, fan cooled motor for the most demanding applications
- Pull-rotor electric brake is self-adjusting and virtually maintenance-free
- Ability to accommodate very long lifts
- Compact, low headroom design
- Completely sealed body suitable for harsh indoor or outdoor environments - IP55 rated Super strength, nickel-plated load chain is corrosion and wear resistant



Capac- ity (tons)	ProductCode	Head- room C (in.)	Std. Lift (ft)	Push Button Cord L (ft)	Lifting Speed (ft/min)	Lifting Motor 3 Phase 60 Hz			LoadChain Diameter (mm) x Chain Fall Lines	Net Weight	Weight for ad- ditional one ft of lift (lbs)
						Output (Hp)	Rated Current (amps)				
							@208-230V	@460V			
1/4	SNER003S	13.8	10	7.2	14	0.34	7.7	3.9	5.0 x 1	82	0.37
1/2	SNER005L	14.0	10	7.2	7	0.34	7.7	3.9	6.3 x 1	84	0.57
1/2	SNER005S	14.6	10	7.2	15	0.6	16.9	8.5	6.3 x 1	104	0.57
1	SNER010L	16.1	10	7.2	7	0.6	16.9	8.5	8.0 x 1	110	0.93
1	SNER010S	17.3	10	7.2	14	1.2	23.9	12.0	8.0 x 1	159	0.93
2	SNER020L	22.6	10	7.2	7	1.2	23.9	12.0	10.0 x 1	174	1.5
3	SNER030C	29.5	10	8.2	3.5	1.2	23.9	12.0	10.0 x 2	207	3.1

For exact dimensions, please contact sales team.