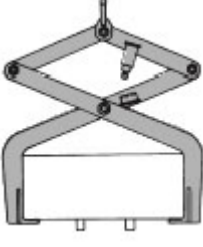

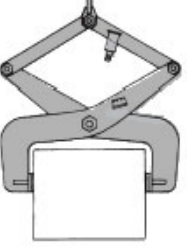


Selecting a Lifting Tong

Supporting Tong	Gripping Tong	Pressure Tong
		
<p>Supporting tongs are for single-size objects that have support clearance underneath, such as boxes, crates, bins and containers. The lifting feet of the tong support the load and maintain it on a horizontal lifting plane.</p>	<p>Gripping tongs are for materials such as ingots, rolls, tubes, pipes and other round or cylindrical objects. The tong grab extends beyond and below the center of the load to provide additional support. The diameter of the load may vary by approximately 25%, but the variation in length is generally unlimited.</p>	<p>Pressure tongs grip the vertical sides of slabs, bales, boxes, billets and other flat or round objects. Pads on pressure tongs provide surface friction or penetration of the load to maintain a safe hold during handling. Pads can come with rubber, belting, pins, points, serrated bits and other materials, depending on the coefficient of friction required for the load.</p>

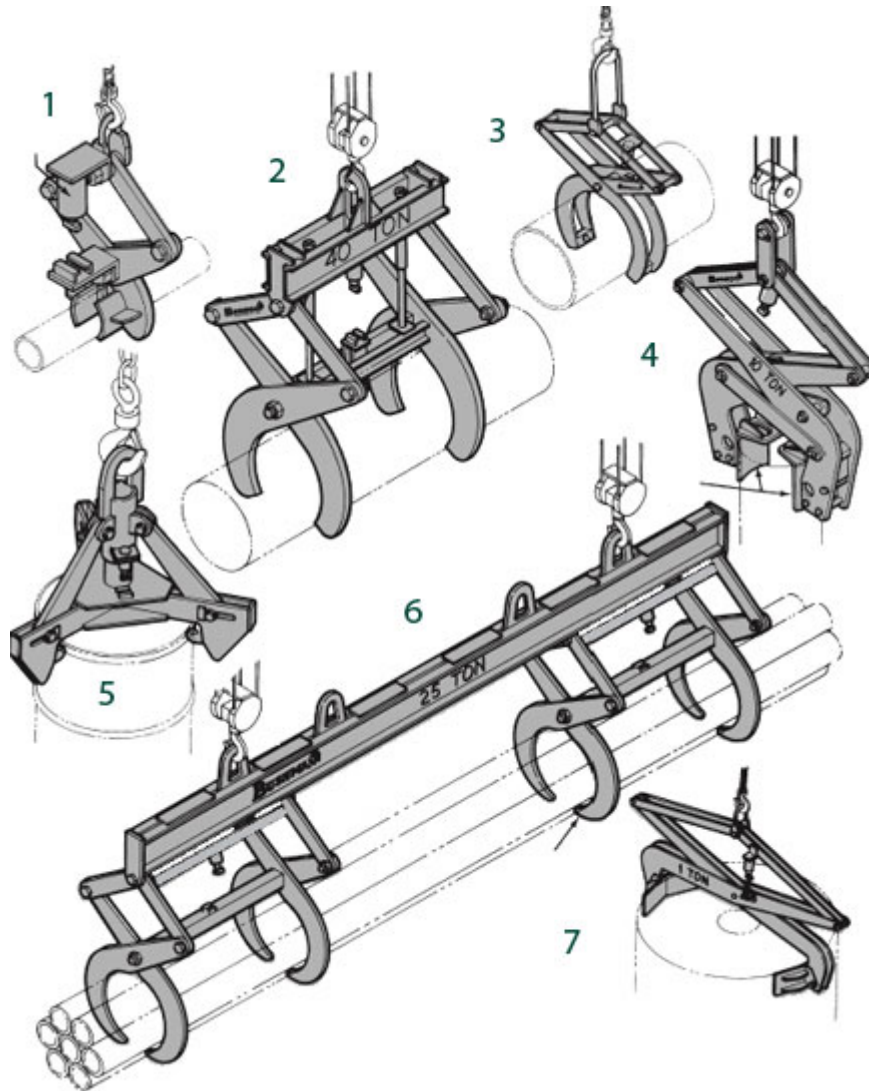
Each tong is equipped with the automatic latching device that provides safe and reliable operation of the clamping mechanism.

To operate the latch: With the lift open, position the tong over the load.

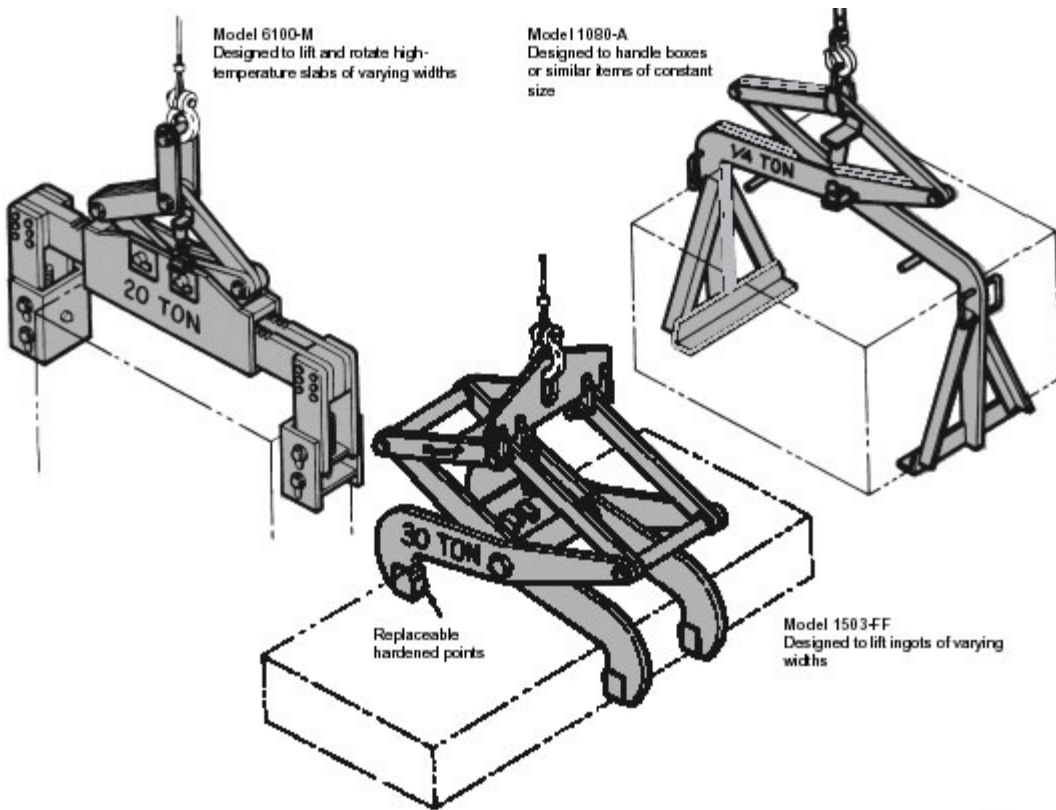
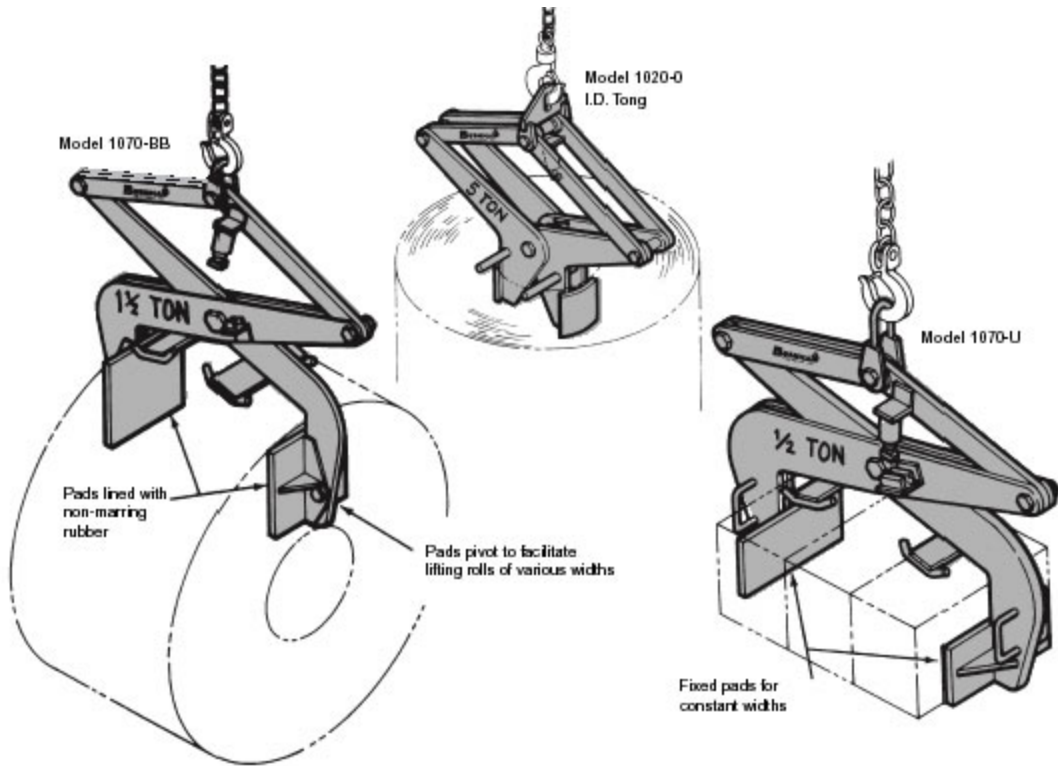
Lower the tong onto the load. With the lifting tong resting on the load, and hoist tension released, the latch automatically disengages from the locked open position.

Raise the hoist to allow the tong pads to close onto load. Then lift and move the load to the desired location.

To release the load, lower the tong grab and place the load on the ground to relieve tension. The latch will automatically lock the tong in the open position. Then raise the hoist to remove the tong.



1. Model 1029-E lifts light weight, short round shapes.
2. Model 1529-D lifts heavy, long, round shapes.
3. Model 1529-M lifts heavy, short, round shapes.
4. Model 1570-K with rotating pads lifts vertically; lies down horizontally.
5. Model 1030 Drum Lifter lifts vertically.
6. Model 1529-D is a lifting beam with two tongs for long loads. The legs are designed to lift bundles of pipe and bar.
7. Model 1070-0 is a pressure tong that lifts round loads vertically.



Load Description

Capacity tons

Shape

Diameter inches

Length inches

Width inches

Height inches

Material

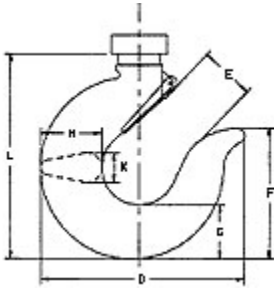
Temperature Fahrenheit Centigrade

Kind of Pads: Cushioning Hardened Points

Width range
desired between
pads inches



Crane Hook Dimensions



D inches

E inches

F inches

G inches

H inches

K Dimension K equals the width of the hook at its widest point. inches

L inches

Hook Capacity tons

Manufacturer

Comments/Special Requirements:
