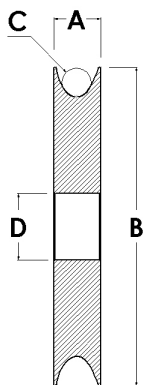
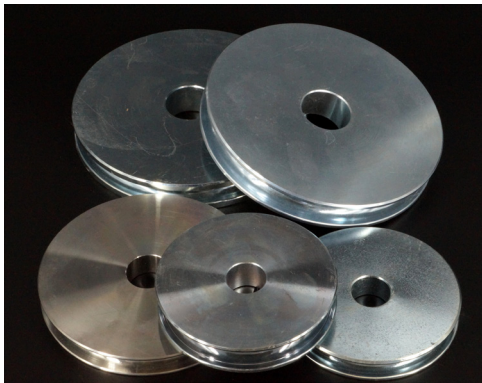


**Sheaves with Bushings**

Model No.	Max Cable (inch)	Dimensions (inch)							Working Load (lbs)	Weight Each (lbs)
		A	B	C	D	E	F	O		
00158	3/16	1	1 1/2	1/2	15/32	7/16	5/16	3/16	525	0.20
00208	3/16	1 1/2	2	1/2	15/32	7/16	5/16	3/16	600	0.30
00258	1/4	2	2 1/2	1/2	15/32	7/16	5/16	1/4	685	0.50
00258-1/8	1/8	2	2 1/2	1/2	15/32	7/16	5/16	1/8	685	0.50
00308	1/4	2 1/2	3	1/2	15/32	7/16	5/16	1/4	800	0.80
00308-5/16"	5/16	2 1/2	3	1/2	15/32	7/16	5/16	5/16	800	0.80
00358	5/16	3	3 1/2	3/4	11/16	5/8	15/32	5/16	1550	1.30
00358-3/8	3/8	3	3 1/2	3/4	11/16	5/8	15/32	3/8	1550	1.30
00408	3/8	3 1/4	4	3/4	11/16	5/8	15/32	3/8	1700	1.80
00508	3/8	4 1/4	5	3/4	11/16	5/8	15/32	3/8	1850	2.90



**Large Sheaves**

Model No.	Either Cable Size Optional (inch)		Dimensions (inch)				Weight Each (lbs)
			A	B	C	D	
04250	3/16	1/4	17/32	4	3/16	7/8	1.69
04375	5/16	3/8	21/32	4	5/16	7/8	1.83
04500	7/16	1/2	25/32	4	7/16	7/8	2.00
05375	5/16	3/8	7/8	5	5/16	1 1/4	3.94
05500	7/16	1/2	7/8	5	7/16	1 1/4	3.56
06075	5/16	3/8	7/8	6	5/16	1 1/4	6.00
06500	7/16	1/2	7/8	6	7/16	1 1/4	5.63