



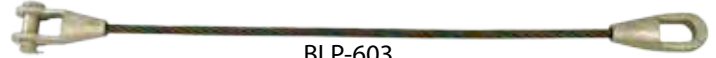
BLP-600
Socket line with open spelter socket each end, pins parallel



BLP-601
Socket line with open spelter socket each end, pins at right angles



BLP-602
Socket line with open spelter socket one end and closed spelter socket other end, pins parallel



BLP-603
Socket line with open spelter socket one end and closed spelter socket other end, pins at right angles



BLP-604
Socket line with closed spelter socket each end, pins parallel



BLP-605
Socket line with closed spelter socket each end, pins at right angles



BLP-606
Socket line with mooring spelter socket each end, bails parallel



BLP-607
Socket line with mooring spelter socket each end, bails at right angles

Features:

- Heavy gauge stainless steel tag in accordance with ASME B30.9 and API RP2D
- Proof tested to 2X Rated Capacity
- Spelter sockets attached with WIRELOCK®
- 6x19 Class IWRC EIP bright wire rope supplied standard up to 2"
- 6x36 Class IWRC EIP bright wire rope supplied standard on 2-1/2" and larger
- 100% termination efficiency
- Design factor 5 to 1

⚠ WARNING

See wire rope sling warnings page for warnings and inspection criteria

How to order:

- Specify part number and length in feet when ordering

Dia. of Rope	BLP-600	BLP-601	BLP-602	BLP-603	BLP-604	BLP-605	BLP-606	BLP-607	Min. Sling Length ft.-in.	EIPS Rated Capacity in Short Tons	EEIP Rated Capacity in Short Tons
3/8"	11131305	11181805	11131205	11181705	11121205	11171705	-	-	1-0	1.5	1.7
1/2"	11131307	11181807	11131207	11181707	11121207	11171707	-	-	1-3	2.7	2.9
5/8"	11131309	11181809	11131209	11181709	11121209	11171709	-	-	1-6	4.1	4.5
3/4"	11131310	11181810	11131210	11181710	11121210	11171710	-	-	1-9	5.9	6.5
7/8"	11131311	11181811	11131211	11181711	11121211	11171711	-	-	2-0	8.0	8.8
1"	11131312	11181812	11131212	11181712	11121212	11171712	-	-	2-6	10	11.4
1-1/8"	11131313	11181813	11131213	11181713	11121213	11171713	-	-	2-9	13	14.3
1-1/4"	11131314	11181814	11131214	11181714	11121214	11171714	-	-	3-0	16	17.6
1-3/8"	11131315	11181815	11131215	11181715	11121215	11171715	-	-	3-0	19	20.2
1-1/2"	11131316	11181816	11131216	11181716	11121216	11171716	-	-	3-3	23	25
1-3/4"	11131318	11181818	11131218	11181718	11121218	11171718	-	-	4-3	31	33.8
2"	11131320	11181820	11131220	11181720	11121220	11171720	11111120	11161620	4-9	40	43.4
2-1/4"	11131322	11181822	11131222	11181722	11121222	11171722	11111122	11161622	5-0	49.4	56.4
2-1/2"	11131324	11181824	11131224	11181724	11121224	11171724	11111124	11161624	5-9	60	66
2-3/4"	11131325	11181825	11131225	11181725	11121225	11171725	11111125	11161625	6-2	72	79
3"	11131327	11181827	11131227	11181727	11121227	11171727	11111127	11161627	6-6	85	94
3-1/2"	11131331	11181831	11131231	11181731	11121231	11171731	11111131	11161631	7-6	113	124

Note:

- Specify wire rope construction, grade, and finish if other than standard