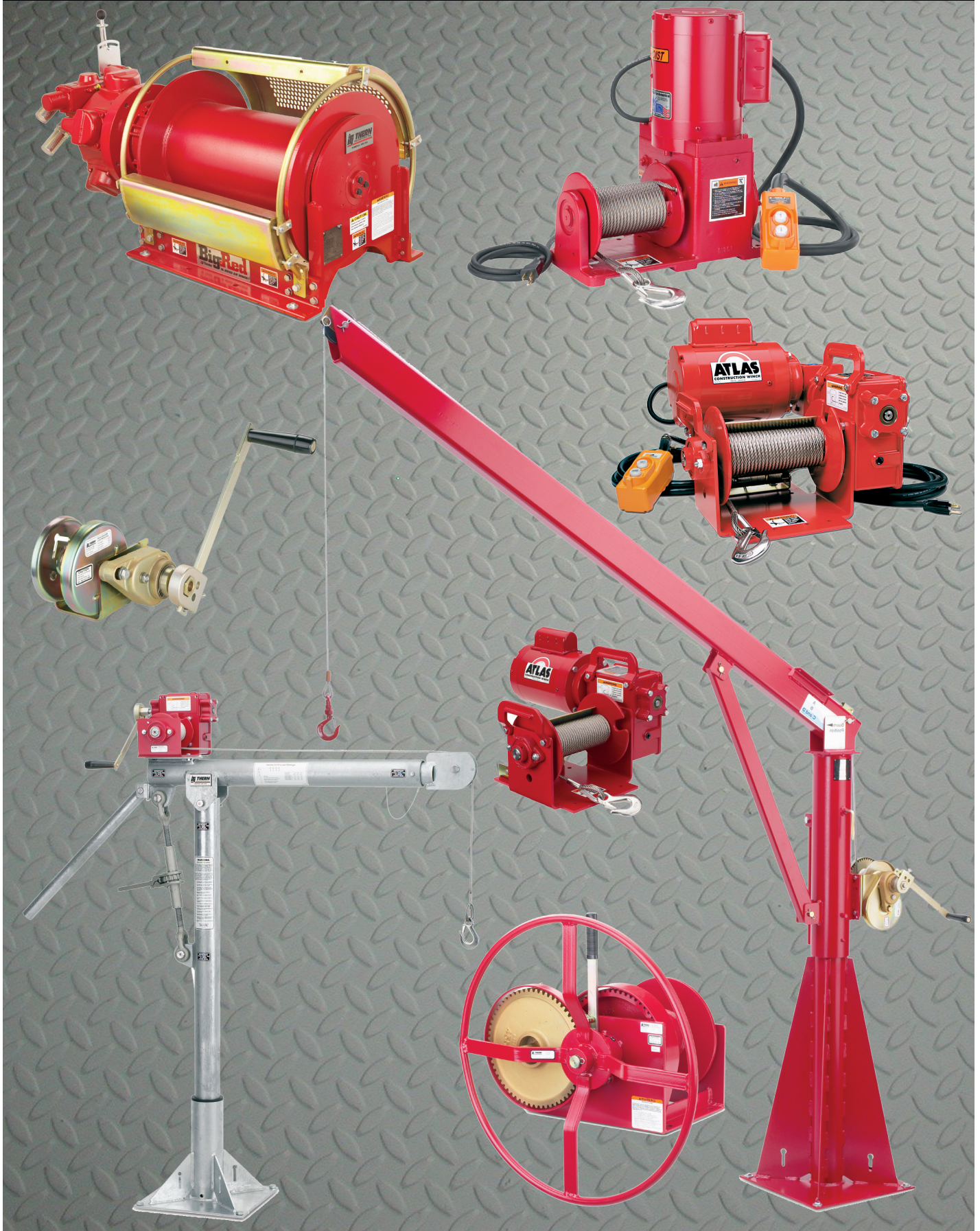
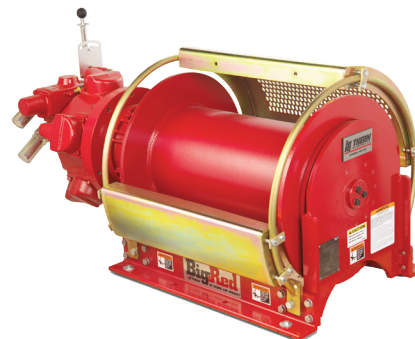


Winches & Cranes



Options and Accessories

- Automatic Disc Brake (D)
- Spring engaged, air pressure released and oil cooled for extended duty cycles and long life.
- Automatic Band Brake (E)
- Spring engaged, air pressure released, with heavy-duty construction that provides up to 150% holding capacity (replaces manual brake).
- Mufflers (F) - Attached to the exhaust ports to reduce noise.
- Control Options (G)
- Winch mounted, full flow remote pendant control valve.
- Marine Grade Epoxy
- Applied with a zinc primer for ultimate protection in harsh environments.
- Drum Guard (H)
- Heavy-duty steel mesh helps to protect operators.
- Adjusts for different rope payout angles.
- ABS Type Approvals Available
- Please contact factory.
- Filter, Regulator and Lubricator (I)
- Maintains air quality to the winch. Required for warranty compliance.
- Line Guide (J)
- Steel construction and hand operated to help wire rope unwind uniformly.
- Stackable Construction Winch Cage
- Protects motor and winch during operation. Movable with forklift.



Model #	Rope Diameter		Breaking Strength		16 in. (407 mm)						24 in. (610 mm)					
					1st layer		mid drum		full drum		1st layer		mid drum		full drum	
	in.	mm	(lb.)	(kg.)	ft.	m	ft.	m	ft.	m	ft.	m	ft.	m	ft.	m
TA2 Series	0.5	12.7	26,600	12,065	83	25	380	115	850	259	130	39	570	173	1,270	387
TA2H Series	0.5	12.7	26,600	12,065	83	25	380	115	850	259	130	39	570	173	1,270	387
TA2.5 Series	0.63	16.0	41,200	18,688	71	21	260	79	580	176	110	33	390	118	860	262
TA5 Series	0.75	19.1	58,800	26,671	72	21	360	109	810	246	120	36	550	167	1,210	368
TA7 Series	0.88	22.4	79,600	36,106	-	-	-	-	-	-	120	36	520	158	1,150	350

Model #	Rope Diameter		Breaking Strength		30 in. (762 mm)						36 in. (915 mm)					
					1st layer		mid drum		full drum		1st layer		mid drum		full drum	
	in.	mm	(lb.)	(kg.)	ft.	m	ft.	m	ft.	m	ft.	m	ft.	m	ft.	m
TA2 Series	0.5	12.7	26,600	12,065	-	-	-	-	-	-	-	-	-	-	-	-
TA2H Series	0.5	12.7	26,600	12,065	-	-	-	-	-	-	-	-	-	-	-	-
TA2.5 Series	0.63	16.0	41,200	18,688	-	-	-	-	-	-	-	-	-	-	-	-
TA5 Series	0.75	19.1	58,800	26,671	150	45	680	207	1,520	463	-	-	-	-	-	-
TA7 Series	0.88	22.4	79,600	36,106	160	48	650	198	1,440	438	190	57	780	237	1,730	527

THERN AIR MINI TUGGERS

THERN Does It Again!



Model MTA.5



MADE IN USA 

MTA Mini Tugger Features:

Mini Tugger Model	MOTOR		DRUM		AIR REQUIREMENTS		Flange Diameter	Wire Rope Diameter	Total Weight
	HP	RPM	Diameter	Width	PSI	CFM			
MTA 1000	1.35	2100	4.5 in	4.5 in	90	60	8.5 in	.25 in	130 lbs
MTA 2000	3.50	1800	7 in	5 in	90	160	13.75 in	.375 in	355 lbs
MTA 2000L	3.50	1800	7 in	13 in	90	160	13.75 in	.375 in	355 lbs

Mini Tugger Model	Load Rating (lbs)			Wire Rope Capacity (ft)			Line Speed (ft/min)		
	First Layer	Mid Drum	Top Layer	First Layer	Mid Drum	Top Layer	First Layer	Mid Drum	Top Layer
MTA 1000	1400	1000	830	16	120	220	30	42	50
MTA 2000	2700	2000	1600	17	130	250	40	55	66
MTA 2000L	2700	2000	1600	55	360	650	40	55	66

Spur Gear Hand Winches

- Up to 2000 lb capacity
- Machine Cut Spur Gears for accurate and long lasting service.
- Automatic Brake Models provide positive load control for lifting and lowering operations. Brake models have PB suffix.
- Corrosion Resistant trivalent zinc plated finish protects against corrosion in harsh environments.
- Quick Disconnect Anchor for quickly attaching or removing wire rope equipped with a swaged ball fitting.
- Bronze and Radial Ball Bearings provide smooth and efficient operation.
- Large Diameter Drums minimize wear to extend wire rope life.
- Gear Covers protect gears and help prevent injuries.
- Stainless Steel Models Available for harsh environments, see models with SS suffix. Stainless steel models are electro-polished for added corrosion resistance.
- Two-year Limited Warranty



Model M4022PB

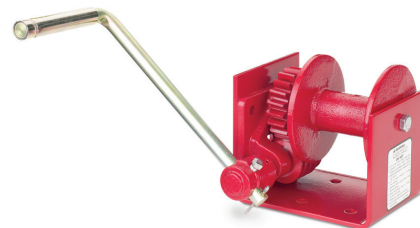


Model M4312PBSS

Model #	Description	Load Rating			Wire Rope Dia (in)	Drum Capacity (ft)			Single Gear Ratio	Double Gear Ratio	force to lift 1000 lb	Approx. Weight
		1st layer	mid drum	full drum		1st layer	mid drum	full drum				
M401	500 lb - marine duty (for pulling only)	500	400	300	1/8 3/16	7 4	60 27	130 60	-	-	-	8
M4022	1000 lb - marine duty (for pulling only)	1000	700	500	1/8 3/16	4 3	52 26	130 57	2.85:1	-	40 lb.	12
M4022PB	1000 lb - marine duty with brake (for lifting)	1000	700	500	1/8 3/16	4 3	52 26	130 57	2.85:1	-	41 lb.	17
M4032	1000 lb - marine duty (for pulling only)	1000	700	500	1/8 3/16	11 7	110 51	250 110	2.85:1	-	40 lb.	14
M4032PB	1000 lb - marine duty with brake (for lifting)	1000	700	500	1/8 3/16	11 7	110 51	250 110	2.85:1	-	41 lb.	18
M4042PBSS	1000 lb - stainless steel with brake (for lifting)	1000	800	600	1/8 3/16 1/4	12 8 5	110 48 27	240 110 59	3.83:1	-	46 lb. (single gear)	24
M4312	2000 lb - marine duty (for pulling only)	2000	1600	1200	3/16 1/4 5/16	8 5 4	48 27 17	110 59 39	3.83:1	14.7:1	20 lb. (double gear)	23
M4312PB	2000 lb - marine duty with brake (for lifting)	2000	1600	1200	3/16 1/4 5/16	8 5 4	48 27 17	110 59 39	-	14.7:1	17 lb. (double gear)	28
M4312PBSS	2000 lb - stainless steel with brake (for lifting)	2000	1600	1200	3/16 1/4 5/16	8 5 4	48 27 17	110 59 39	-	14.7:1	17 lb. (double gear)	28
M4412	2000 lb - marine duty (for pulling only)	2000	1600	1200	3/16 1/4 5/16	18 14 11	97 52 35	210 120 77	3.83:1	14.7:1	20 lb. (double gear)	25
M4412PB	2000 lb - marine duty with brake (for lifting)	2000	1600	1200	3/16 1/4 5/16	18 14 11	97 52 35	210 120 77	-	14.7:1	17 lb. (double gear)	30

Worm Gear Hand Winches

- Up to 4000 lb capacity
- Machine Cut Worm Gears provide accurate operation and long lasting service.
- Enclosed Oil Bath provides continuous lubrication of gears to minimize wear, except on Model 465. On Model 4WM2 oil seals keep oil in and dirt out.
- Hex Drive and handle are included. Model 4WM2 can be power driven with a maximum 400 rpm drill-motor.
- Automatic Brake Models provide positive load control for lifting. Brake models have a PB or B suffix. Model 4WM2 features an internal mechanical brake.
- Corrosion Resistant durable paint finish protects against corrosion in harsh environments.
- Bronze Bearings on most models for smooth operation.
- Large Diameter Drums minimize wire rope wear.
- Handles Adjust in length to change force required to move the load.
- Mounting Options include floor, wall, or ceiling. Adapter plate may be required, contact factory.
- Two-year Limited Warranty



Model 465



Model 4WM2



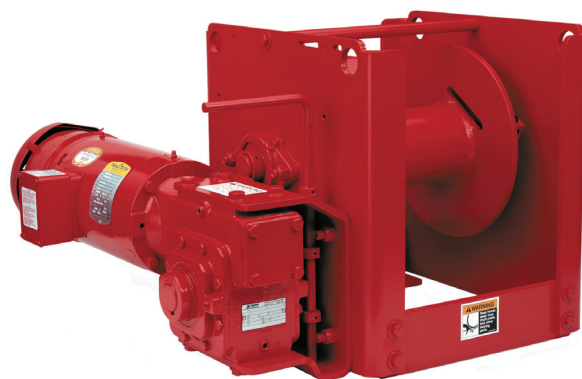
Model 482B



Model #	Description	Load Rating			Wire Rope Dia (in)	Drum Capacity (ft)			gear ratio	force to lift 1000 lb	Approx. Weight
		1st layer	mid drum	full drum		1st layer	mid drum	full drum			
465	750 lb - open gears (recommended for pulling only)	750	600	400	1/8 3/16	7 4	58 27	130 59	20:1	21 lb.	12
462	1000 lb - enclosed gearing (recommended for pulling only)	1000	700	500	1/8 3/16	7 4	61 28	140 61	15:1	34 lb.	15
4622PB	1000 lb - enclosed gearing with brake (for lifting)	1000	700	500	1/8 3/16	7 4	61 28	140 61	15:1	26 lb.	21
472	2000 lb - enclosed gearing (recommended for pulling only)	2000	1700	1300	3/16 1/4 5/16	15 11 8	65 35 23	140 77 52	24:1	24 lb.	32
4WM2	2000 lb - enclosed gearing with brake (for lifting) Drill Driveable	2000	1500	1200	1/4	11	35	77	32:1	14 lb.	41
482	4000 lb - enclosed gearing (recommended for pulling only)	4000	3300	2500	1/4 5/16 3/8	23 18 14	140 91 65	300 200 140	26:1	31 lb.	100
482B	4000 lb - enclosed gearing with brake (for lifting)	4000	3300	2500	1/4 5/16 3/8	23 18 14	140 91 65	300 200 140	26:1	21 lb.	113

Series 4WS Worm/Spur Gear Power Winches

- Up to 6000 lb capacity
- Modular Design allows us to make-to-order each winch to meet your exact needs.
- Standard Features include TEFC brake motors, enclosed machine cut gearing and flange style ball bearings.
- Custom Modifications available include grooved drums, special drum lengths and diameters, limit switches,
- roller pressure bars, and special finishes. Pneumatic, hydraulic and alternate motor voltages are also available.
- Two-year Limited Warranty



Series 4WS3M10

Model #	Model Number Extensions				Motor HP	Load Rating			Wire Rope Dia (in)	Line Speed (fpm)		Drum Capacity (ft)			Approx. Weight
	Load Rating	Line Speed	Motor Codes	Clutch Option		1st layer	mid drum	full drum		1st layer	full drum	1st layer	mid drum	full drum	
4WS1M6	800	15	A, B D, E, F	C	.5	800	550	420	3/16	17	33	21	110	260	155
4WS1M6	800	30	A, B D, E, F	C	.75	800	550	420	3/16	29	55	21	110	260	165
4WS1M6	800	40	A, B D, E, F	C	1	800	550	420	3/16	43	82	21	110	260	175
4WS1M6	1100	20	A, B D, E, F	C	.75	1100	800	600	1/4	18	32	16	62	140	165
4WS1M6	1100	30	A, B D, E, F	C	1	1100	800	600	1/4	30	54	16	62	140	175
4WS1M6	1100	40	D, E, F	C	1.5	1100	800	600	1/4	44	81	16	62	140	170
4WS1M6	1500	20	A, B D, E, F	C	1	1500	1000	800	1/4	18	32	16	62	140	175
4WS1M6	1500	30	D, E, F	C	1.5	1500	1100	800	1/4	30	54	16	62	140	170
4WS1M6	1500	40	B, D, E, F	C	2	1500	1100	800	1/4	44	81	16	62	140	180
4WS3M10	2000	15	A, B D, E, F	C	1	2000	1300	1000	5/16	14	29	34	220	500	310
4WS3M10	2000	20	D, E, F	C	1.5	2200	1400	1000	5/16	18	39	34	220	500	305
4WS3M10	2500	20	B, D, E, F	C	2	2500	1600	1200	3/8	22	46	27	160	360	320
4WS3M10	3000	15	D, E, F	C	1.5	3000	2000	1500	3/8	14	29	27	160	360	305
4WS3M10	3000	20	B, D, E, F	C	2	3000	2000	1500	3/8	19	39	27	160	360	320
4WS3M10	3500	7	A, B D, E, F	C	1	3500	2300	1700	7/16	8	15	23	120	270	330
4WS3M10	3500	15	B, D, E, F	C	2	3700	2500	1800	7/16	14	29	23	120	270	320
4WS3M10	3500	20	D, E, F	C	3	3700	2500	1800	7/16	23	46	23	120	270	330
4WS6M12	3000	10	D, E, F	C	1.5	3400	2200	1600	3/8	12	25	40	300	660	515
4WS6M12	3000	20	B, D, E, F	C	2	3100	2000	1500	3/8	20	42	40	300	660	530
4WS6M12	4000	10	B, D, E, F	C	2	4500	2900	2100	7/16	12	25	34	220	500	530
4WS6M12	4000	20	D, E, F	C	3	4000	2500	1900	7/16	24	50	34	220	500	540
4WS6M12	6000	4	A, B D, E, F	C	1	6200	4000	3000	1/2	4	8	30	170	390	535
4WS6M12	6000	10	D, E, F	C	3	6400	4200	3100	9/16	12	25	26	140	310	540
4WS6M12	6000	20	D, E, F	C	5	6400	4200	3100	9/16	24	50	26	140	310	585

Series 4WP2D High Speed - Worm Gear Power Winches

- Up to 1500 lb capacity
- Direct Drive Design delivers high speed operation in both directions, even under full load.
- Machine Cut Bronze Worm Gears provide accurate operation and long lasting service.
- Enclosed Oil Bath provides continuous lubrication of gears to minimize wear. Oil seals keep oil in and dirt out.
- Internal Mechanical Brake provides positive load control for lifting and lowering operations.
- Ball Bearings and self-aligning bronze bearings provide smooth and efficient operation.
- Pressure Plate applies pressure to drum and wire rope to help maintain uniform winding. Not available on clutch models.
- Dual Function Cable Anchor for quick disconnect of wire rope with swaged ball fitting, or recessed cable anchor with set screw for wire rope with unfinished end.
- Mounting Options include floor, wall, or ceiling.
- Two-year Limited Warranty



**Series
4WP2D8-1500-40**

Model #	Model # Extensions			Motor HP	Load Rating			Wire Rope Dia (in)	Line Speed (fpm)		Drum Capacity (ft)			Approx. Weight
	Load Rating	Line Speed	Motor Codes		1st layer	mid drum	full drum		1st layer	full drum	1st layer	mid drum	full drum	
High Speed Atlas winches for lifting or pulling														
4WP2D8	800	26	A, B, D, E	1	800	460	330	1/4	26	65	19	130	280	100
4WP2D8	800	40	D, E	1.5	800	460	330	1/4	26	65	19	130	280	100
4WP2D8	1500	26	D, E	2	1500	900	600	1/4	26	65	19	130	280	100
4WP2D8	1500	40	B, D, E	3	1500	900	600	1/4	40	97	19	130	280	100
High Speed Clutch Models for HORIZONTAL PULLING ONLY														
4WP2DC	800	26	A, B, D, E	1	800	460	330	1/4	26	65	12	87	190	100
4WP2DC	800	40	D, E	1.5	800	460	330	1/4	26	65	12	87	190	100
4WP2DC	1500	26	A, B, D, E	2	1500	900	600	1/4	26	65	12	87	190	100
4WP2DC	1500	40	D, E	3	1500	900	600	1/4	40	97	12	87	190	100

Series 4WP2 and 4WP2T - Worm Gear Power Winches

- Up to 2000 lb capacity
- 115 Volt Single Phase Electric Motor includes power cord with grounded plug and a momentary contact-type push button pendant control on a control cord.
- Machine Cut Worm Gears provide accurate operation and long lasting service.
- Enclosed Oil Bath provides continuous lubrication of gears to minimize wear. Oil seals keep oil in and dirt out.
- Internal Mechanical Brake provides positive load control for lifting and lowering operations.
- Ball Bearings and self-aligning bronze bearings provide smooth and efficient operation.
- Pressure Plate on series 4WP2T8 only, applies pressure to drum and wire rope to help maintain uniform winding.
- Dual Function Cable Anchor for quick disconnect of wire rope with swaged ball fitting, or recessed cable anchor with set screw for wire rope with unfinished end.
- Mounting Options include floor, wall, or ceiling.
- Two-year Limited Warranty



**Series
4WP2T8-2000-8**

Series	Description	Load Rating			Wire Rope Dia (in)	Line Speed (fpm)		Drum Capacity (ft)			Approx. Weight
		1st layer	mid drum	full drum		1st layer	full drum	1st layer	mid drum	full drum	
4WP2	Includes controls	1.3	2000	1200	1/4	8	13	11	35	77	85
4WP2T8-2000-8	Includes controls	1.3	2000	800	1/4 5/16	8	19	19	130	280	101
	ATLAS winch -- 8" drum -- for pulling or lifting					8	19	15	85	190	
4WP2TC-2000-8	Includes controls	1.3	2000	800	1/4	8	19	12	87	190	106
	clutch model -- 5.5" drum -- for horizontal pulling only										

PORTA-GANTRY® 1,100 - 11,000 lb (500 - 5000 kg)

Innovative, lightweight, portable and very strong, the PORTA-GANTRY lifting system is the number one choice for organizations seeking durable, multiple location lifting solutions and a healthy return on investment.



Provided by **THERN**



- Lightweight & portable with easy on site manual assembly:
 - 4 portable parts on just 4 bolts
 - Flat-packed for shipping & storage
 - 360° swivel-locking castors as standard for easy positioning
 - Simple, manual height & span adjustment
 - Secure, captive trolley
- Flexible system configurations WLL 1,100 lb (500 kg) to WLL 11,000 lb (5,000 kg)
- Variety of standard height configuration plus, customization where required, with interchangeable components (subject to WLL rating)
- Corrosion resistant, anodized finish - easily cleaned and suitable for "clean room" applications
- Bolted structure, lateral beam and leg bracing features allow complete stability for any lifting challenge
- Total security - type tested at NAMAS accredited laboratories with every system tested at 150% of WLL prior to shipment
- Ergonomic design of profiles, handles, etc. (A) for secure operation

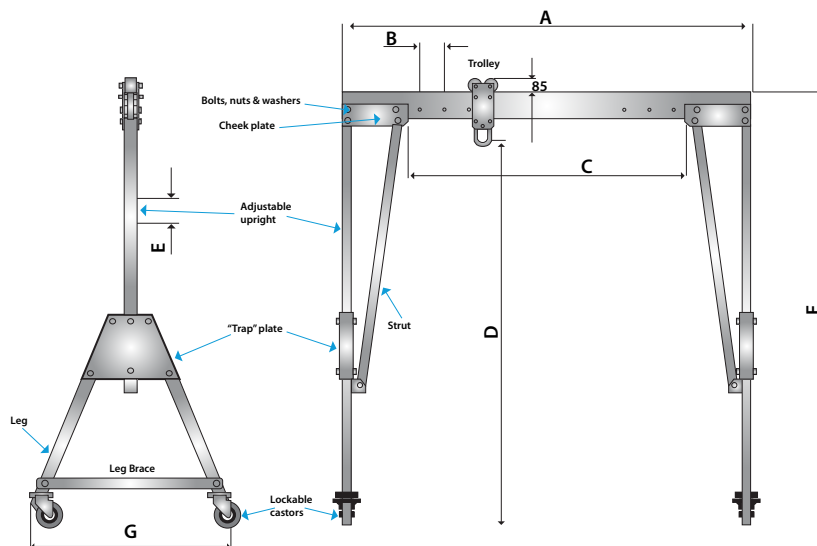
For 11,000 lb (5,000 kg) Model Only

- "Wheel barrow" handling in field with just two people required (A)
- Stabilizer leg deployment, vertical allows handling by just one person (B)
- Geared hand-wheel operation of beam height adjustment (C)
- 11,000 lb (5,000 kg) WLL rating - available in T size plus customization



REID PORTA-GANTRY STANDARD UNIT DATA SHEET

PG Systems	Capacity	Overall Beam Length (A)	Span Adjustment Increment (B)	Max Working Span (C)	Max Height to Lifting Eye (D)	Min Height to Lifting Eye	Height Adjustment Increment (E)	Max Height to Top of Beam (F)	Max Width Across Legs (G)	Persons to Assemble	Beam Weight	A Frame Weight (pair)	Trolley Weight	Approx. Ship Wt.
		(in) (mm)	(in) (mm)	(in) (mm)	(in) (mm)	(in) (mm)	(in) (mm)	(in) (mm)	(in) (mm)		(lb) (kg)	(lb) (kg)	(lb) (kg)	(lb) (kg)
PGSS00500S-2500	1/2 ton (1100 lb)	98.4 2,500	7.8 200	62.2 1,580	92.9 2,361	63.4 1,611	5.9 150	105.4 2,678	48 1,220	1	40 18	146.0 66.0	16 7.2	503.0 228.0
PGSS00500S-3920		154.3 3,920	7.8 200	118.1 3,000	92.9 2,361	63.4 1,611	5.9 150	105.4 2,678	48 1,220	1	63 29	146.0 66.0	16 7.2	525.0 238.0
PGSS00500S-4570		179.9 4,570	7.8 200	143.7 3,650	92.9 2,361	63.4 1,611	5.9 150	105.4 2,678	48 1,220	1	74 33	146.0 66.0	16 7.2	534.0 242.0
PGSS01000S-2500	1 ton (2200 lb)	98.4 2,500	7.8 200	62.2 1,580	92.9 2,361	63.4 1,611	5.9 150	105.4 2,678	48 1,220	2	40 18	146.0 66.0	16 7.2	503.0 228.0
PGSS01000S-3920		154.3 3,920	7.8 200	118.1 3,000	92.9 2,361	63.4 1,611	5.9 150	105.4 2,678	48 1,220	2	63 29	146.0 66.0	16 7.2	525.0 238.0
PGSS01000S-4570		179.9 4,570	7.8 200	143.7 3,650	92.9 2,361	63.4 1,611	5.9 150	105.4 2,678	48 1,220	2	73 33	146.0 66.0	16 7.2	534.0 242.0
PGSS01000M-2500		98.4 2,500	7.8 200	62.2 1,580	112.3 2,854	82.8 2,104	5.9 150	124.8 3,171	56.2 1,429	2	40 19	176.0 80.0	16 7.2	534.0 242.0
PGSS01000M-3920		154.3 3,920	7.8 200	118.1 3,000	112.3 2,854	82.8 2,104	5.9 150	124.8 3,171	56.2 1,429	2	63 29	176.0 80.0	16 7.2	556.0 252.0
PGSS01000M-4570		179.9 4,570	7.8 200	143.7 3,650	112.3 2,854	82.8 2,104	5.9 150	124.8 3,171	56.2 1,429	2	73 33	176.0 80.0	16 7.2	565.0 256.0
PGSS02000S-2500	2 ton (4400 lb)	98.4 2,500	7.8 200	62.2 1,580	92.9 2,361	63.4 1,611	5.9 150	105.4 2,678	48.0 1,220	2	40 18	168.0 76.0	16 7.2	525.0 238.0
PGSS02000S-3920		154.3 3,920	7.8 200	118.1 3,000	92.9 2,361	63.4 1,611	5.9 150	105.4 2,678	48.0 1,220	2	63 29	168.0 76.0	16 7.2	547.0 248.0
PGSS02000S-4570		179.9 4,570	7.8 200	143.7 3,650	92.9 2,361	63.4 1,611	5.9 150	105.4 2,678	48.0 1,220	2	73 33	168.0 76.0	16 7.2	556.0 252.0
PGSS02000I-2500		98.4 2,500	7.8 200	62.2 1,580	125.9 3,198	86.5 2,198	7.8 200	138.3 3,514	67.9 1,726	2	40 18	203.0 92.0	16 7.2	561.0 254.0
PGSS02000I-3920		154.3 3,920	7.8 200	118.1 3,000	125.9 3,198	86.5 2,198	7.8 200	138.3 3,514	67.9 1,726	2	63 29	203.0 92.0	16 7.2	583.0 264.0
PGSS02000I-4570		179.9 4,570	7.8 200	143.7 3,650	125.9 3,198	86.5 2,198	7.8 200	138.3 3,514	67.9 1,726	2	73 33	203.0 92.0	16 7.2	592.0 269.0
PGSS03000T-2500	3 ton (6600 lb)	98.4 2,500	7.8 200	62.2 1,580	160.9 4,089	113.7 2,889	7.8 200	173.4 4,405	79.1 2,011	3	40 18	362.0 164.0	16 7.2	757.0 343.0
PGSS03000T-4570		179.9 4,570	7.8 200	143.7 3,650	160.9 4,089	113.7 2,889	7.8 200	173.4 4,405	79.1 2,011	3	94 43	362.0 164.0	16 7.2	812.0 368.0
PGSA05000T-4570 ¹	5 ton (11k lb)	179.9 4,570	7.8 200	143.7 3,650	159 4,040	118.8 2,840	7.8 200	176.5 4,485	79.1 2,011	3 - 4	155 70	467.0 ² 212.0	20 9.2	982.0 445.0



NOTE - beam height adjustment:

The height of each gantry beam is easily adjusted by the release of 2 bolts on each upright and can be easily and securely raised into position by increments of 5.91 or 7.87 inches (150 or 200 mm).

To assist with this activity a geared wheel is provided for the larger gantries.

All WLL ratings can be produced in each standard frame size
Custom spans, height and Working Load Limits (WLL) on application

¹ NB. PG5000 beam depth (9.85 in, 250 mm), trolley depth (22.45 in, 570 mm) & trolley top above beam (4.93 in, 125 mm) are larger than the standard beam depth (5.99 in, 152 mm), trolley depth (15.16 in, 385 mm) and trolley top above beam (3.35 in, 85 mm)

² This weight includes the stabilizer leg option

Please note that dimensions may vary marginally

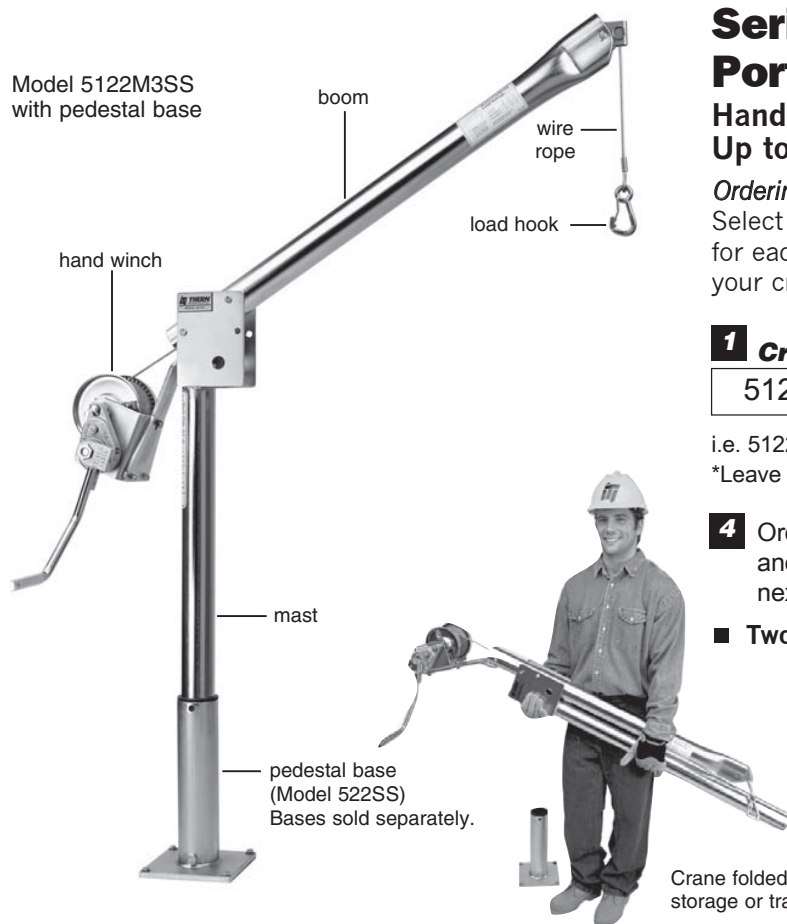
NB. No leg brace fitted on 'S' systems

Castor Dimensions

1100 lb (500 kg) and 2200 lb (1000 kg) Gantry: wheel width 1.6 in (40 mm), diameter 5.9 in (150 mm), height of castor 7.5 (190 mm).

4400 lb (2000 kg), 6600 lb (3000 kg) and 11000 lb (5000 kg): wheel width 2 in (50 mm), diameter 7.9 (200 mm), height 9.6 in (245 mm).

Model 5122M3SS
with pedestal base



Series 5122 Portable Davit Cranes

**Hand Winch Operation
Up to 500 lb capacity**

Ordering your crane is as easy as 1...2...3...

Select the option that best suits your needs for each item. Fill in the boxes below to create your crane part number.

1 Crane	2 Winch	3 Optional Finish*
5122		

i.e. 5122M1GAL

*Leave blank for standard powder coat finish

4 Order your **Base, Wire Rope Assembly** and **Optional Accessories** separately. See next page.

■ **Two-year Limited Warranty**

Wire Rope Assemblies – Section 9

model number	wire rope diameter x length	approx. ship weight
galvanized aircraft cable with swivel hook and swaged ball fitting		
WA19-20NS	3/16 in x 20 ft	3 lb
WA19-28NS	3/16 in x 28 ft	4 lb
WA19-36NS	3/16 in x 36 ft	4 lb
WA19-45NS	3/16 in x 45 ft	5 lb
304 stainless steel wire rope with SS oval hook and swaged ball fitting - swivel hook also available please contact factory		
WS19-20NO	3/16 in x 20 ft	3 lb
WS19-28NO	3/16 in x 28 ft	3 lb
WS19-36NO	3/16 in x 36 ft	3 lb
WS19-45NO	3/16 in x 45 ft	4 lb
WS19-60NO	3/16 in x 60 ft	9 lb
WS19-75NO	3/16 in x 75 ft	11 lb

Crane Model

- **Adjustable Boom** with 2 different positions for operation.
- **Crane Rotates** 360° in a sleeve bearing in the base.
- **Crane** folds down for storage or transport.

1 Base Model 5122 – Section 4

base model	description	approx. ship wt.
5122 ¹	up to 500 lb – portable davit	54 lb

Please contact factory or nearest Thern Distributor for firm fixed price and delivery.

¹ **Base Model** includes corrosion resistant electrostatic powder coated finish. Other finishes available see Option 3.

Winch Models

- **Hand Winch Operation** with spur gear hand winch equipped with automatic disc brake for load control.
- **Quick Disconnect Anchor** for quickly attaching or removing wire rope equipped with a swaged ball fitting.

2 Winch Options – Section 4

winch	description	approx. ship wt.
M1	M4022PB-K – zinc plated spur gear hand winch	17
M3	M4042PBSS-K – stainless steel spur gear hand winch	24

Optional Finishes

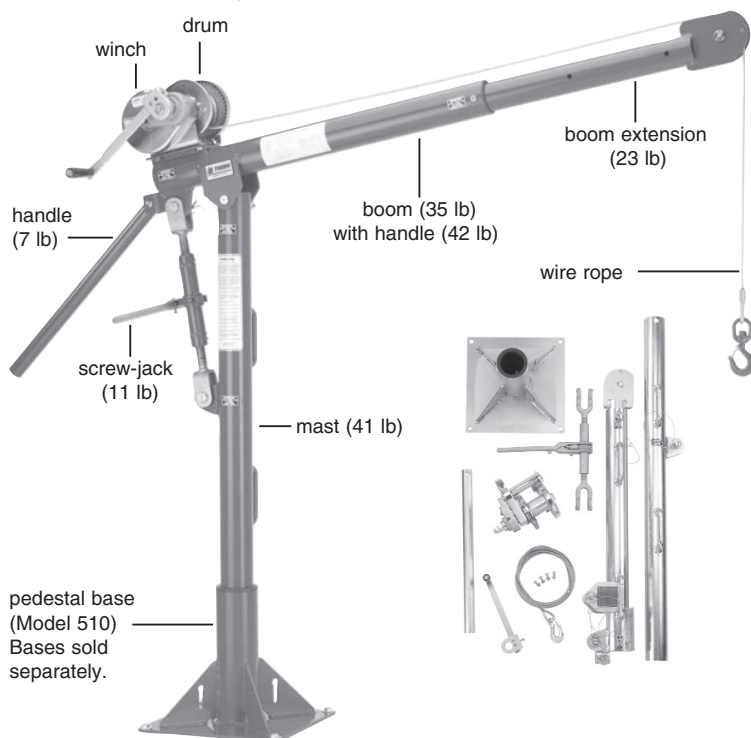
- **Galvanized Finish** provides extra protection against corrosion.
- **Stainless Steel Models** are constructed from all stainless steel with an electro-polished finish for superior corrosion resistance.

3 Optional Finish (crane only) – Section 4

finish	description
GAL	galvanized finish – crane only
SS	stainless steel construction – crane only

Thern products are not for lifting people or things over people.

Model 5110M1 with pedestal base



Series 5110 Portable Davit Cranes

**Hand or Power Winch Operation
Up to 1000 lb capacity**

*Ordering your crane is as easy as
1...2...3...* Select the option that best
suits your needs for each item. Fill in
the boxes below to create your crane
part number.

1 Crane	2 Optional Winch	3 Finish*
5110		

i.e. 5110M2GAL

*Leave blank for standard powder coat finish

4 Order your **Base, Wire Rope
Assembly** and **Optional Accessories**
separately.

■ **Two-year Limited Warranty**

Crane Model

- **Crane Rotates 360°** on a pin and sleeve bearing in the base. Handle on the boom makes rotation easy.
- **Adjustable Boom** telescopes to 4 different lengths, and adjusts in height while under load with ratchet style screw-jack.
- **Crane Breaks Down** for storage or transport.

1 Crane Model 5110 – Section 4

base model	description	approx. ship wt.
5110 ¹	up to 1000 lb – portable davit	160 lb

Please contact factory or nearest Thern Distributor for firm fixed price and delivery.

¹ **Base Model** includes corrosion resistant electrostatic powder coated finish. Other finishes available see Option 3.

Winch Models

- **Hand Winch Operated Models** include spur gear or worm gear hand winch with brake for load control. Model M2 winch can be drill driven, 400 rpm max.
- **Power Winch Operated Models** include electric winch with pendant control and brake. Other power options available, please contact factory.
- **Quick Disconnect Anchor** for quickly attaching or removing wire rope equipped with a swaged ball fitting.

2 Winch Options – Section 4

winch	description	approx. ship wt.
M1	M4312PB-K – zinc plated spur gear hand winch	28 lb
M2 ²	4WM2-K – worm gear hand winch	42 lb
M3	M4312PBSS-K – stainless steel spur gear hand winch	28 lb
E2 ³	4WP2-K electric winch – 115/1/60 VAC with 6 ft pendant control, see model 4WP2 for details	85 lb
E4 ³	4777-K electric winch – 115/1/60 VAC with 6 ft pendant control, see model 4777 for details	110 lb
E4DC ³	4777DC-K electric winch – 12 volt DC with 10 ft pendant control, see model 4777DC for details	105 lb

² Winch finish is powder coated, for epoxy finish contact factory.

³ Winch finish is enamel, for epoxy finish contact factory.

Optional Finishes

- **Galvanized Finish** provides extra protection against corrosion.
- **Stainless Steel Models** are constructed from all stainless steel with an electro-polished finish for superior corrosion resistance.

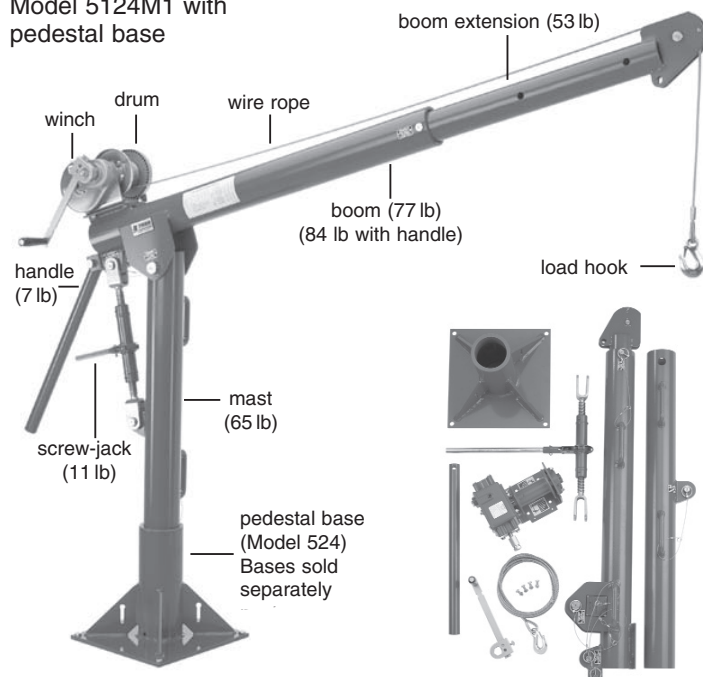
3 Optional Finish (crane only) – Section 4

finish	description
GAL	galvanized finish – crane only
SS	stainless steel construction – crane only

Thern products are not for lifting people or things over people.

Form FF10-0910

Model 5124M1 with
pedestal base



Crane breaks down for transport

Series 5124 Portable Davit Cranes

Hand or Power Winch Operation
Up to 2000 lb capacity

Ordering your crane is as easy as 1...2...3...
Select the option that best suits your
needs for each item. Fill in the boxes
below to create your crane part number.

1 Crane	2 Optional Winch	3 Finish*
5124		

i.e. 5124M2GAL

*Leave blank for standard powder coat finish

4 Order your **Base, Wire Rope Assembly**
and **Optional Accessories** separately.

■ **Two-year Limited Warranty**

Crane Model

- **Crane Rotates 360°** on a pin and sleeve bearing in the base. Handle on the boom makes rotation easy.
- **Adjustable Boom** telescopes to 4 different lengths, and adjusts in height while under load with ratchet style screw-jack.
- **Crane Breaks Down** for storage or transport.

1 Crane Model 5124 – Section 4

base model	description	approx. ship wt.
5124 ¹	up to 2000 lb – portable davit	253 lb

Please contact factory or nearest Thern Distributor for firm fixed price and delivery.

¹ **Base Model includes corrosion resistant electrostatic powder coated finish. Other finishes available see Option 3.**

Winch Models

- **Hand Winch Operated Models** include spur gear or worm gear hand winch with brake for load control. Model M2 winch can be drill driven, 400 rpm max.
- **Power Winch Operated Models** include electric winch with pendant control and brake. Other power options available, please contact factory.
- **Quick Disconnect Anchor** for quickly attaching or removing wire rope equipped with a swaged ball fitting.

2 Winch Options – Section 4

winch	description	approx. ship wt.
M1	M4312PB-K – zinc plated spur gear hand winch	28 lb
M2 ²	4WM2-K – worm gear hand winch	42 lb
M3	M4312PBSS-K – stainless steel spur gear hand winch	28 lb
E2 ³	4WP2-K electric winch – 115/1/60 VAC with 6 ft pendant control, see model 4WP2 for details	85 lb
E4 ³	4777-K electric winch – 115/1/60 VAC with 6 ft pendant control, see model 4777 for details	110 lb
E4DC ³	4777DC-K electric winch – 12 volt DC with 10 ft pendant control, see model 4777DC for details	105 lb

² Winch finish is powder coated, for epoxy finish contact factory.

³ Winch finish is enamel, for epoxy finish contact factory.

Optional Finishes

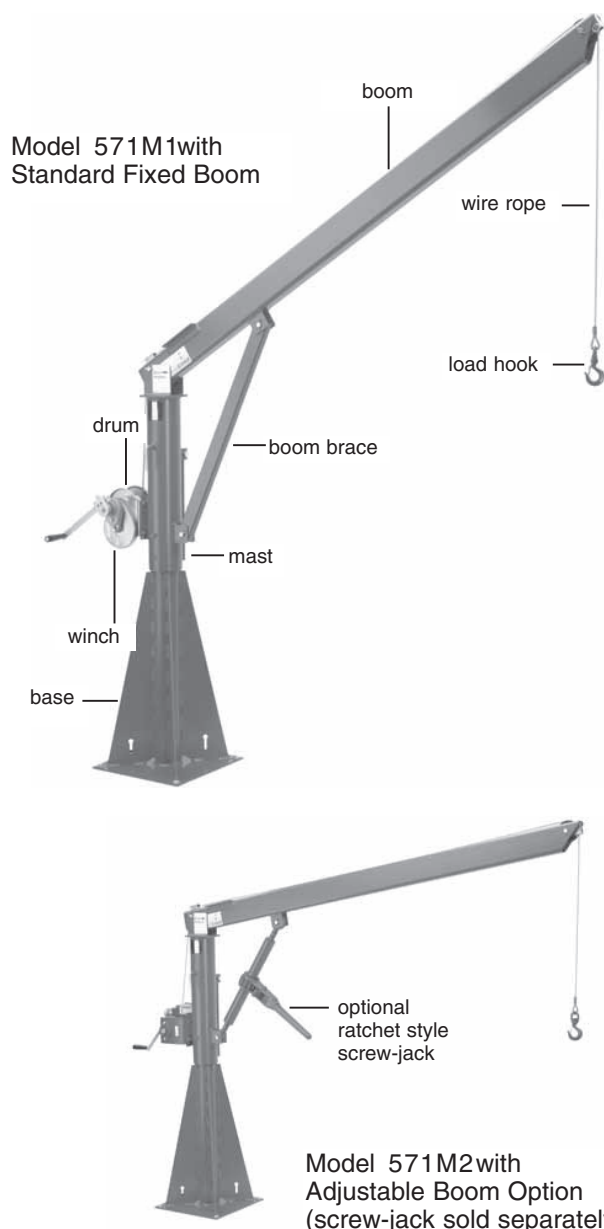
- **Galvanized Finish** provides extra protection against corrosion.
- **Stainless Steel Models** are constructed from all stainless steel with an electro-polished finish for superior corrosion resistance.

3 Optional Finish (crane only) – Section 4

finish	description
GAL	galvanized finish – crane only
SS	stainless steel construction – crane only

Thern products are not for lifting people or things over people.

Form FF10-0910



Series 571 and 572 Fre Rol Davit Cranes

Hand or Power Winch Operation
Up to 2200 lb capacity

- **Hand Winch Operated Models** include spur gear or worm gear hand winch with brake for load control. Model 571M2 can be drill driven, 400 rpm max.
- **Power Winch Operated Models** include 115 volt 1 phase AC electric winch with pendant control and brake. Other power options available, please contact factory.
- **Fixed Boom** – Boom Position C
- **Adjustable Boom Option** – adjusts between Boom Position A and D – with hand operated ratchet style screw-jack, used to adjust height and reach.
Optional screw-jack sold separately.
- **Mast and Boom Rotate** on tapered roller bearings for smooth 360° load movement. Mast locks in one of four positions with hand tightened lock bolt. Handle on the mast makes rotation easy.
- **Gusset Style Base** for permanent installation and stability under load.
- **Epoxy Finish** available for improved protection against corrosion.
- **Wire Rope Assemblies** sold separately.
- **Two-year Limited Warranty**

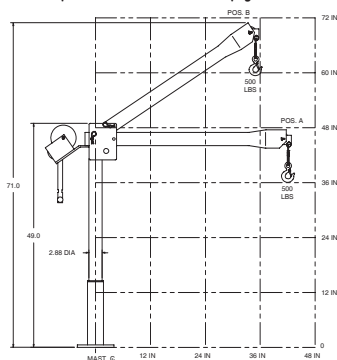


Series 571 and 572 – Crane Configurations, Bases, and Options – Section 4

model	description	approx. ship wt.
571M1	up to 1500 lb – with M4312PB-K spur gear hand winch	425 lb
571M2	up to 1500 lb – with 4WM2V-K worm gear hand winch	450 lb
571E2	up to 1500 lb – with 4WP2-K electric winch – 115 VAC, 1 phase, 6 ft pendant control	475 lb
571E4	up to 1500 lb – with 4777-K electric winch – 115 VAC, 1 phase, 6 ft pendant control	489 lb
572M1	up to 2200 lb – with M452B-K spur gear hand winch	720 lb
572E3	up to 2000 lb – with 4771-K electric winch – 115 VAC, 1 phase, 6 ft pendant control	750 lb
572E5	up to 2200 lb – with 4WS3M6-K electric winch – 115 VAC, 1 phase, 6 ft pendant control (other configurations available, please contact factory)	1050 lb
SJ1	ratchet style screw-jack for Series 571 (replaces standard boom brace)	37 lb
SJ2	ratchet style screw-jack for Series 572 (replaces standard boom brace)	97 lb

Please contact factory or nearest Thern Distributor for firm fixed price and delivery.

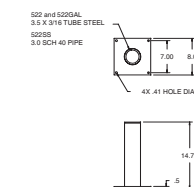
5122 with pedestal/socket base mounted upright



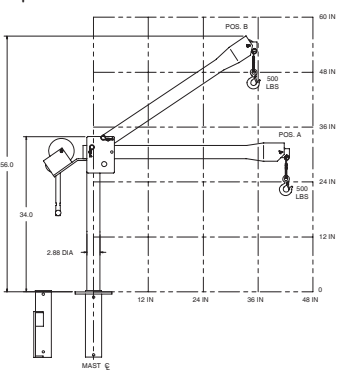
5122 Upright – Height and Reach

boom position	hook reach	hook height
A	42 in	37 in
B	35 in	60 in

Dimensions are for reference only and subject to change without notice.



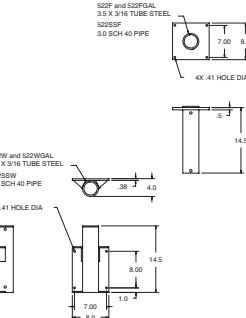
5122 with wall mount base or pedestal/socket base mounted flush



5122 Flush – Height and Reach

boom position	hook reach	hook height
A	42 in	22 in
B	35 in	45 in

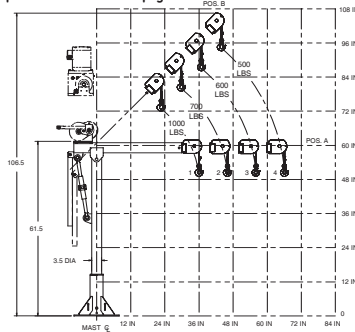
Dimensions are for reference only and subject to change without notice.



Therm products are not for lifting people or things over people.

Form FF10-0910

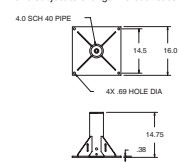
5110 with pedestal base mounted upright



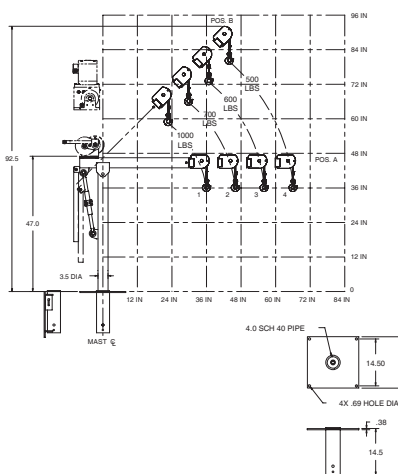
5110 Upright – Height and Reach

boom position	hook reach	hook height
A-1	36 in	50 in
A-2	46 in	50 in
A-3	56 in	50 in
A-4	66 in	50 in
B-1	23 in	73 in
B-2	30 in	80 in
B-3	37 in	87 in
B-4	44 in	94 in

Dimensions are for reference only and subject to change without notice.



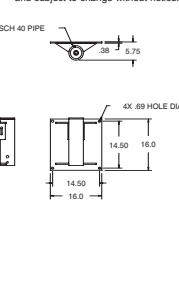
5110 with wall mount base or socket base mounted flush



5110 Flush – Height and Reach

boom position	hook reach	hook height
A-1	36 in	36 in
A-2	46 in	36 in
A-3	56 in	36 in
A-4	66 in	36 in
B-1	23 in	59 in
B-2	30 in	66 in
B-3	37 in	73 in
B-4	44 in	80 in

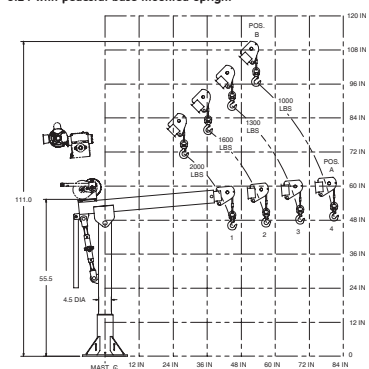
Dimensions are for reference only and subject to change without notice.



Therm products are not for lifting people or things over people.

Form FF10-0910

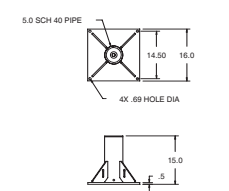
5124 with pedestal base mounted upright



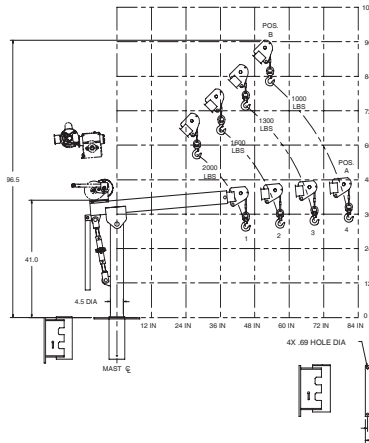
5124 Upright – Height and Reach

boom position	hook reach	hook height
A-1	45 in	46 in
A-2	57 in	47 in
A-3	69 in	48 in
A-4	81 in	49 in
B-1	28 in	71 in
B-2	36 in	80 in
B-3	45 in	88 in
B-4	53 in	97 in

Dimensions are for reference only and subject to change without notice.



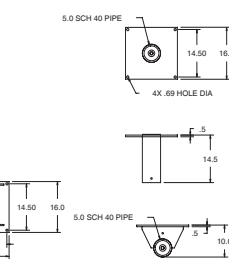
5124 with wall mount base or socket base mounted flush



5124 Flush – Height and Reach

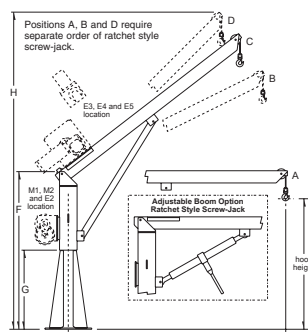
boom position	hook reach	hook height
A-1	45 in	32 in
A-2	57 in	33 in
A-3	69 in	34 in
A-4	81 in	35 in
B-1	28 in	57 in
B-2	36 in	66 in
B-3	45 in	74 in
B-4	53 in	83 in

Dimensions are for reference only and subject to change without notice.



Therm products are not for lifting people or things over people.

Form FF10-0910



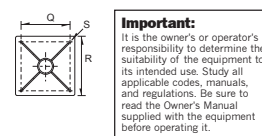
Series 571 and 572 Crane Dimensions

	Series 571	Series 572
F	67.19 in	77.41 in
G	32.88 in	38.62 in
H	131.19 in	155.75 in
Q	18.00 in	23.00 in
R (hole dia.)	.56 in	.81 in

Dimensions are for reference only and subject to change without notice.

Important:

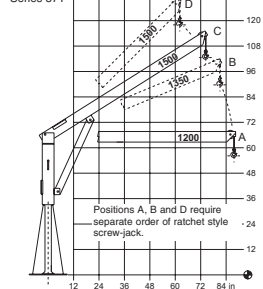
Load rating will vary with wire rope length and boom position. Please see Performance Characteristics table.



Important:

It is the owner's or operator's responsibility to determine the suitability of the equipment to its intended use. Study all applicable codes, manuals, and regulations. Be sure to read the Owner's Manual supplied with the equipment before operating it.

Series 571



Series 571 and 572 – Height and Reach

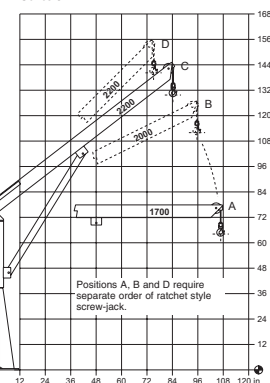
series	boom position	hook reach	hook height
571	A'	87.88 in	56.00 in
	B'	81.25 in	90.00 in
	C (fixed)	74.56 in	102.00 in
	D'	62.25 in	118.00 in
572	A'	106.75 in	64.00 in
	B'	95.50 in	112.00 in
	C (fixed)	84.25 in	130.00 in
	D'	75.00 in	140.00 in

Dimensions are for reference only and subject to change without notice.
* Boom position requires purchasing the screw-jack option.

Form FF10-0910

Therm products are not for lifting people or things over people.

Series 572



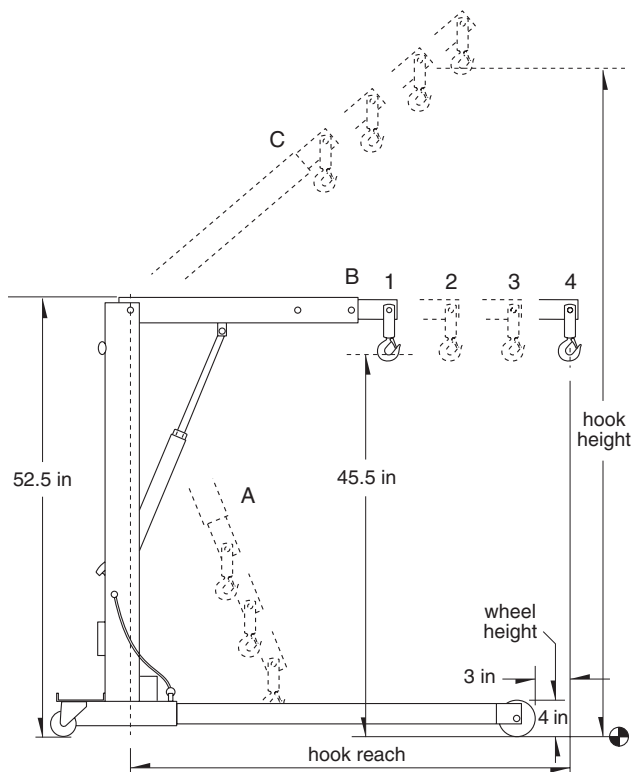
Important:

Base installation is purchaser's responsibility. Therm recommends consulting a civil engineer or other qualified professional.



Important:

It is the owner's or operator's responsibility to determine the suitability of the equipment to its intended use. Study all applicable codes, manuals, and regulations. Be sure to read the Owner's Manual supplied with the equipment before operating it.



Form FF10-0910

Thern products are not for lifting people or things over people.

Model 548 Portable Floor Crane

Up to 1000 lb Capacity

- **Manually Operated Hydraulic Jack** for raising the boom, equipped with a control knob for smooth lowering of loads.
- **Collapsible Crane** folds down into 16 x 17 x 57 inch compact unit for storage or transport. Boom lowers into mast, legs are removed and placed inside mast uprights.
- **Boom Telescopes** to 4 different lengths to extend reach. Load rating decreases as boom length is increased.
- **Overload Relief Valve** helps prevent overload damage by releasing hydraulic pressure when too large a load is placed on the crane.
- **Four Wheel Base** with scratch and spark resistant wheels in front, and caster wheels in back for 360° maneuverability. Four point support ensures stability under load.
- **Swivel Hook** allows rotation of load for accurate placement.
- **Cabled Pins** secure the legs to the base for quick installation and removal, cables ensure pins are not lost or misplaced when removed.
- **Two-year Limited Warranty**

Model 548 – Section 4

model	description	approx. ship wt.
548	1000 lb portable floor crane	154 lb

Please contact factory or nearest Thern Distributor for firm fixed price and delivery.

Model 548 Specifications

	load rating	max. hook reach (at B)	max. hook height (at C)
boom position 1	1000 lb	31.00 in	65.00 in
boom position 2	800 lb	38.00 in	69.50 in
boom position 3	680 lb	45.00 in	74.00 in
boom position 4	590 lb	52.00 in	78.50 in

Dimensions are for reference only and subject to change without notice.

