



701BLK

# Classic & Value Frame Series

## ***Classic and Value Frames***

are designed with a special notch called a rabbet, that allows the mirror to sit inside the assembled frame. Once the mirror is glazed into the back of the frame, the mirror can be hung on the wall with the included hanging hardware



719BLK

## **Value Frame Series**

Clean and Modern Designs

Popular for single  
& multi-family new construction

## **Classic Frame Series**

Elegant and Ornate Designs

Popular for new custom homes  
& remodeling projects



580B

*Framed mirrors  
that mount directly  
to the wall!*

### **No Inventory Required**

***Knocked Down (KD) Frames***  
Ships in 3-5 days

***Pre-Assembled Open Frames  
(You provide mirror)***  
Ships in 3-5 days  
Ships in 2 weeks for 25+ frames

***Pre-Assembled Glazed Framed Mirrors***  
Ships in 4-6 weeks for  
25+ framed mirrors

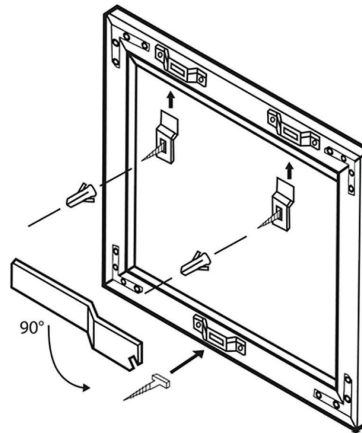
# Classic & Value Frame Series

## Classic Series/ Value Series hanging systems

**Whenever Possible Install Into Studs!**

### **Standard Hanging System:**

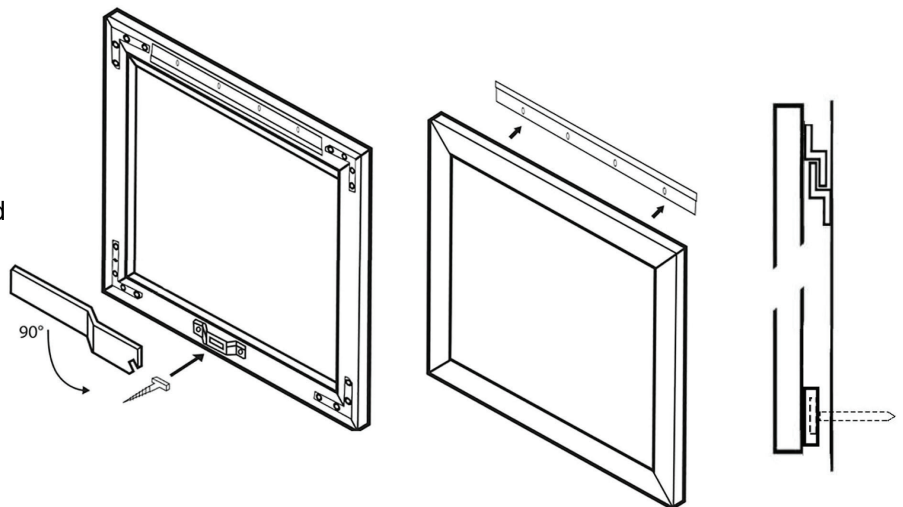
Supplied with every Classic and Value Series KD and open frame.



### **Hang Rail System Option:**

Hang rail purchased separately for KD and open frames. Recommended for widths greater than 50"

**(Included for all pre-assembled glazed framed mirrors.)**



For more information, please contact your local Precision Frameworks Sales Rep, or contact us at:

office: 877.739.1169

fax: 770.979.0283

email: [sales@pfwks.com](mailto:sales@pfwks.com)

[www.PrecisionFrameworks.com](http://www.PrecisionFrameworks.com)



rev. 10/21