

Precision Frameworks: 241SN

Materials

Series

241

Finish

SN- Satin Nickel

Dimensions

2" W x 3/4" H

Contour

Flat

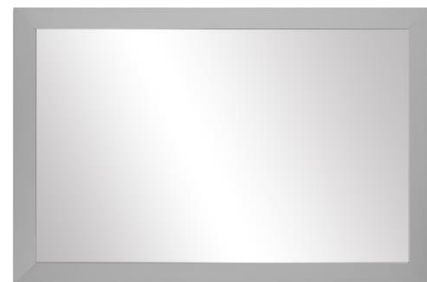
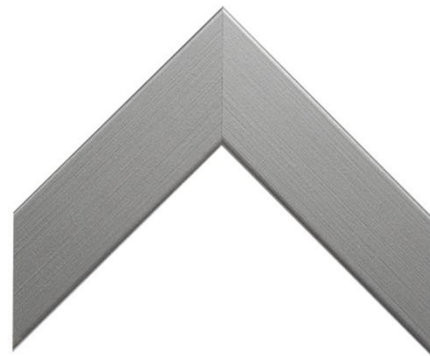
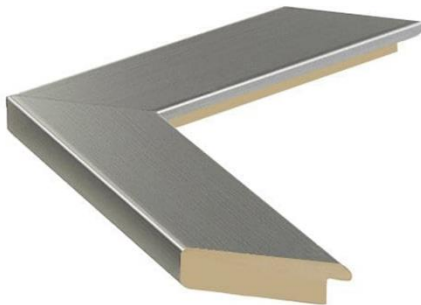
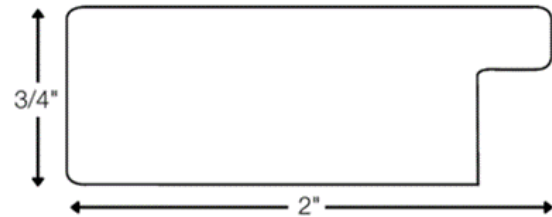
Frame Construction

MDF substrate with laminated wrap

Glass Mirror

Meets or exceeds ASTM C1036-01 and C1503-01

Thickness determined by manufacturer's guidelines



Precision Frameworks: 241SN

Framed Mirror Assembly

Assembled with specialty non-drip, fast drying wood glue (3000 psi tensile strength) applied between mitered corners. Corners joined with stainless steel v-nails inserted into back of frame moulding and reinforced with 2 ¾" x 2 ¾" .06 Black ABS Hair cell finish 1 side reinforcing squares and attached with heavy duty staples.

Frame Reinforcement

Framed mirrors over 54" wide are reinforced vertically with ¾" 20ga galvanized steel strapping attached with back of frame with wood screws.

Glazing Method

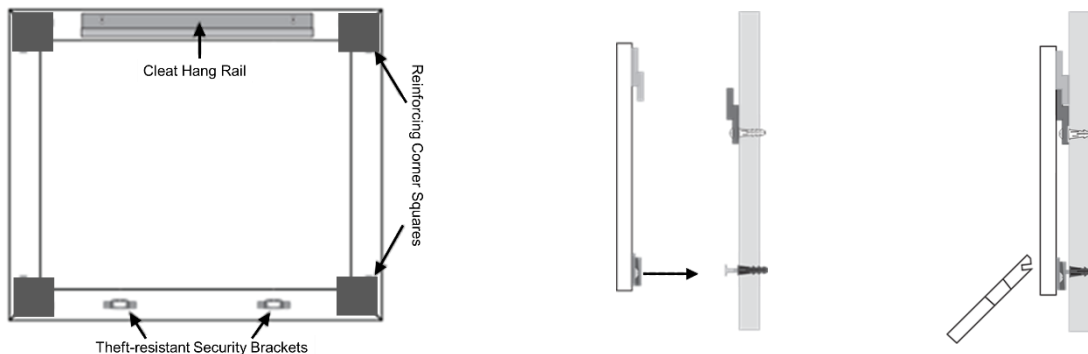
Glass mirror secured to assembled frame with metal framepoint anchors driven flush to back of mirror. A bead of hot melt glue (300°F softening point) is applied to restrict movement and bond mirror to frame.

Manufacturer's Mirror Thickness Guidelines

- 1/8"- mirrors under 13 square feet
- 3/16"- mirrors greater than or equal to 13 square feet
- 3/16" with Category II safety backing- for mirrors with any dimension greater than 84"

Installation Method

Use Cleat Hang Rail system and secure to wall with Theft-resistant Security Brackets.



Warranty

Precision Frameworks, LLC. warrants that our products are free from manufacturer's defects in materials or workmanship during normal use for a period of one (1) year from the purchase date. The warranty applies only to the original purchaser of the product from Precision Frameworks, LLC.

If a product is determined to be defective, we will replace or repair the product at no charge.

Improper installation, use of harsh or abrasive cleaning products or excessive moisture contacting the product voids the warranty or any claim. Precision Frameworks, LLC reserves the right to inspect any claim prior to replacing or repairing the product.

The scope of the warranty is limited to replacing or repairing the product and does not include associated labor charges to install, repair, deliver or to remove the existing product.