

PINPOINTS THE GAS LEAK SOURCE

Gas leaks pose a threat to sensitive equipment, the environment, and people. ICI's Gas DetectIR LW cooled infrared detector is able to visualize and pinpoint gas leaks, greatly reducing risk and limiting exposure to invisible and potentially harmful chemicals. Gas DetectIR series cameras are extremely important tools for tracing faults.

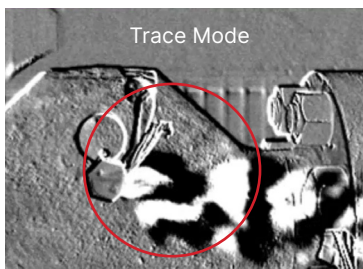


Gas DetectIR LW



QUICK START AND RESPONSE

The Gas DetectIR LW boots in less than 5 minutes and is capable of detecting gas leaks as small as 0.001 ml/s. Inspectors can accurately measure temperature to collect additional data in order to prepare appropriate responses to detected gas leaks.



GAS LEAK DETECTION

The Gas DetectIR LW has unmatched gas leak detection capabilities. It is lab tested with the ability to detect over 20 gases including Sulfur hexafluoride and other gases. Includes trace mode to highlight gases.



180° Rotation

BETTER VIEWING EXPERIENCE

The ergonomic tilting viewfinder and rotating 3.5", 640 x 480 LCD screen is designed to help thermographers detect gas leaks quickly and comfortably at nearly any angle. It is best for diagnosing leaks found near high temperature components.



The Gas DetectIR LW infrared camera is a high performance thermal imager capable of visualizing and accurately pinpointing the source of SF6 and other uncontained gases. Features an HD OLED tilting viewfinder with a rotating 3.5" (640 x 480) LCD screen. The camera is light weight, making it great for remote or convenient on-site observation. The Gas DetectIR LW gas camera is rechargeable with 3 hours of continuous operation as well as USB 2.0 charging. AV video Output and 60 seconds of voice annotation per image makes report creation a breeze. Includes ICI Reporting Software.

Features

- Unmatched gas detection
- Detects over 20 gases
- Trace Mode for better visibility
- 60 Seconds voice annotation per image
- Rotating 3.5" (640 x 480) LCD screen
- Tilting high-definition viewfinder
- Rechargeable battery (12 V DC/AC)
- Compact/portable
- Includes ICI reporting software

Gases Detected

- | | |
|-----------------------------|-----------------------|
| • Sulfur Hexafluoride (SF6) | • Hydrazine |
| • Acetyl Chloride | • Methylsilane |
| • Acetic Acid | • Methyl Ethyl Ketone |
| • Allyl Bromide | • Methyl Vinyl Ketone |
| • Allyl Chloride | • Propenal |
| • Allyl Fluoride | • Propene |
| • Ammonia (NH3) | • Tetrahydrofuran |
| • Bromomethane | • Trichloroethylene |
| • Chloride Dioxide | • Uranyl Fluoride |
| • Ethyl Cyanoacrylate | • Vinyl Chloride |
| • Ethylene | • Vinyl Cyanide |
| • Furan | • Vinyl Ether |

Options & Accessories

- Lens options: 6° x 4.5°, 11° x 8.8°, 24° x 18°, 48° x 40°
- Includes ICI Reporting Software
- Windows 32-bit SDK
- Linux SDK (x86, x64 and ARM)

Specifications

- **Pixel Resolution:** 320 x 240
- **Accuracy:** ± 2°C (± 3.6 °F) or ± 2%
- **Temperature Range:** -20 °C to 350 °C (-4 °F to 662 °F)
- **Operation Range:** -15 °C to 50 °C (5 °F to 122 °F)
- **Storage Range:** -40 °C to 70 °C (-40 °F to 158 °F)
- **Detector Array:** cooled QWIP
- **Focus:** automatic or manual
- **FOV:** 24° x 18°
- **IFOV:** 1.31 mrad
- **Spectral Band:** 10 μm to 11 μm
- **Response Time:** 0.001 ml/s
- **Thermal Sensitivity (NETD):**
< (15 mK) 0.015 °C at 30 °C (86 °F)
- **Frame Rate:** 50 Hz
- **Dynamic Range:** 16-bit
- **Humidity:** 10% to 95% non-condensing
- **Pixel Operability:** > 99 %
- **Shock/Vibration:** 25 G/2.5 G
- **Dimensions (without lens):**
292 mm x 145 mm x 146 mm (L x W x D ± 0.5 mm)
(11.50" x 5.71" x 4.71" (L x W x H ± 0.02"))
- **Power:** 12V DC/AC adapter
- **Battery:** Li-ion, rechargeable/replaceable
- **Operation Time:** ≥ 3 Hours
- **Charging Time:** 3 Hours
- **Start Up Time:** ≤ 5 minutes
- **Weight:** ≤ 2.6 kg (5.73 lbs)
- **Interface:** USB 2.0
- **View Finder:** color OLED
- **Video Format:** IRV or AVI
- **Video Output:** AV
- **Image Format:** IR IMA (with data) + visible JPG
- **Image Polarity:** 6 options
- **Memory:** SD Card (up to 32 GB)
- **Screen:** 4:3, 3.5" LCD screen, 640 x 480
- **Digital Camera:** 5 MP
- **Zoom:** 1x - 8x continuous
- **Emissivity Correction:** 0.1 to 1.0
- **Voice Annotation:** 60 seconds per image
- **Protection:** IP54, IEC 529
- **Laser:** Class II 635 nm, < 1 mW
- Internal non-uniformity correction (NUC)