

## Applications

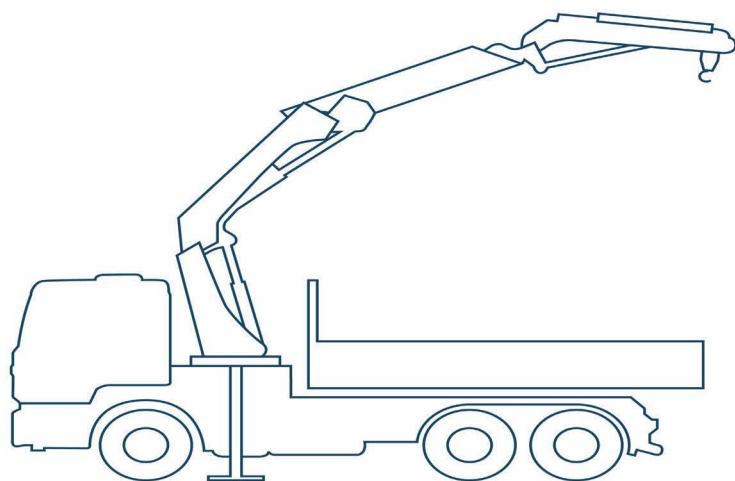


### Mobile cranes

The truck mounted crane with its powerful looks is very stable, and nonetheless mobile and fully roadworthy. The crane proves its usefulness not only during salvage work: When erecting buildings or bridges, for instance, it can lift loads weighing more than 1,000 tons. An important contribution is made by Bosch Rexroth and its strong expertise in hydrostatic drivers and controls. The superstructure rotates perfectly and the winch drives, which are controlled by the Rexroth LUDV flow sharing control block M7, impress with their fine control.

### Truck superstructures

In general, superstructures incorporating Rexroth hydraulics can load and unload a variety of goods, both quickly and reliably under time pressure. No matter whether it be in a dump truck, loading crane or hook lift truck, the Rexroth A18VO axial piston variable pumps supply the power needed for all types of superstructures and make for speedy transloading



#### Bosch Rexroth Thailand

7/426 M.6 Amata City Industrial Estate Rayong Mabyangporn, Pluak Daeng District,  
Rayong 21140, Thailand  
Tel.: +66(38)958-937  
Email: RexrothCenter@th.bosch.com  
[www.boschrexroth.com/en/th/](http://www.boschrexroth.com/en/th/)

## Mobile electronics

Amplifiers



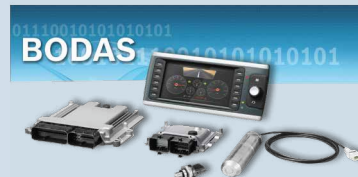
Control panel for EHC CP1



Sensors



BODAS system



- ▶ BODAS – Bosch Rexroth Design and Application System: Extensive and modular mobile electronics product range with high-quality hardware components, standard application software packages, diagnosis and programming tools
- ▶ Proven Bosch technology for mobile working machines
- ▶ High product quality and long-term availability
- ▶ Development competence and system know-how for mobile applications
- ▶ Realization of products and applications complying functional safety requirements

## Mobile Hydraulics



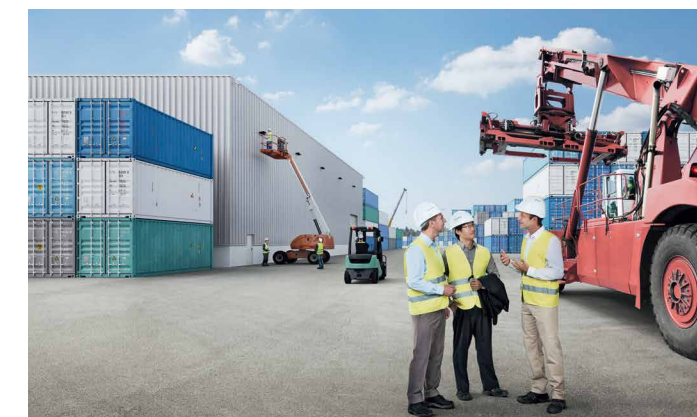
Construction Machinery



Excavators



Airport Equipment



Material Handling



Agricultural



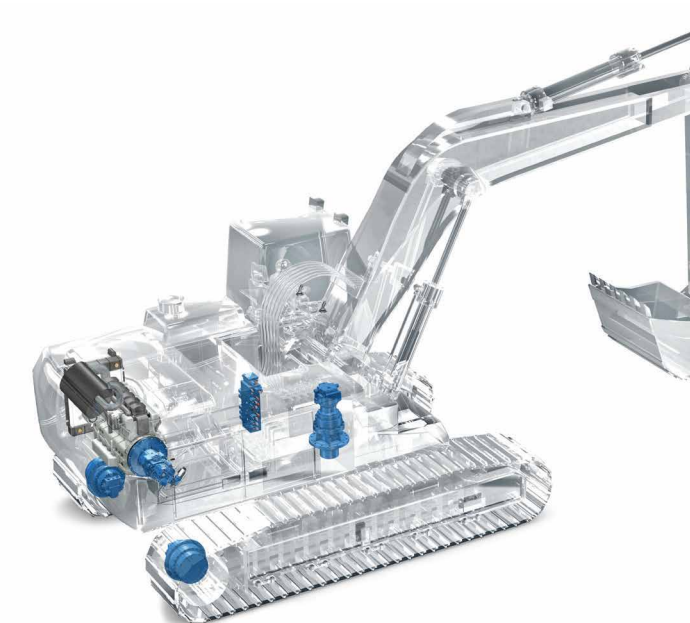
On-Highway & Commercial Vehicles

## Applications



### Concrete mixers

Reliably delivers fresh building materials to the roadworks or building site. Noise-optimized, reliable components and intelligent software solutions from Bosch Rexroth turn the mixer drum. The light weight of the drives leaves space for larger loads of concrete. The energy-efficient solutions from Bosch Rexroth helps to save money.

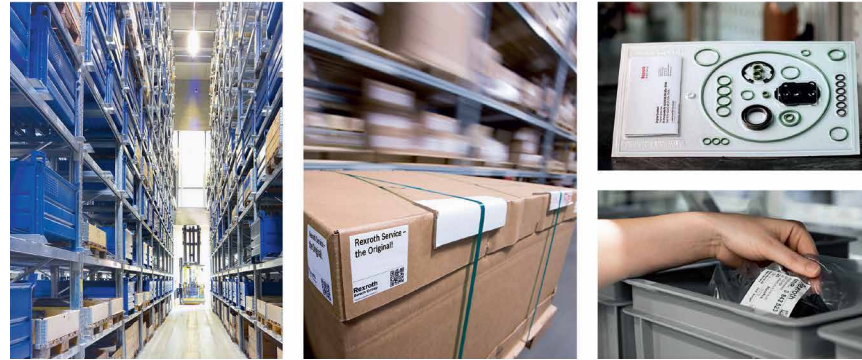


### Standard excavators

There is a lot of engineering behind the powerful, irrepressible force of construction machine, which is capable of both rough demolition work and of delicate precision work. Powerful drives and intelligent combinations between advanced hydraulic components with sophisticated system such as the Vurtual Bleed Off VBO give this heavyweight among construction machinery maximum energy consumption and a long service life. Among the construction machines, the excavator is considered to be the "key machine" where all essential construcion and working principles can be found



## Service



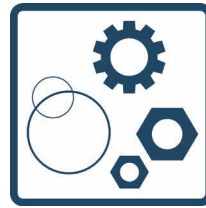
### Spare parts

- Easy and fast identification of needed parts in our online Spare Parts Catalog
- Efficient and reliable maintenance through fast and reliable supply of spare parts World-wide
- Lower risks and operating costs, through use of genuine Rexroth spare parts
- Down-time minimized through customer spare part management agreements



### Repairs

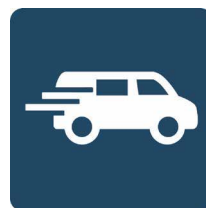
- Full performance restored cost-effectively
- Professional repairment with original manufacturer parts
- Standardized Rexroth repair service worldwide
- 24/7 service



### Preventive and Predictive service

Detecting wear before it leads to failure

- Fluid Management
- Fitness Check
- Oil Analysis
- Rental Equipment
- Service Agreements



### Field service

- Commissioning
- Application support
- Troubleshooting
- Regular diagnostics and maintenance



### System engineering

- Simulation and visualization
- Component to system solution
- Customized-specific engineering for machine overhaul
- Analysis, project planning, and implementation of the modernization world
- Replacement of affected components and system with modern solutions
- Risk assessment e.g. according to machinery directives



## Mobile Control

### Control blocks



Load-sensing control block M4



Open-center control block SM12



Open-center control block M8



Load-sensing control block SB12

### Valve modules



Check Q meter FD



Stabilizing module RSM



Slew drive module MSC

### Valve modules



Single-circuit power brake valve LT 05

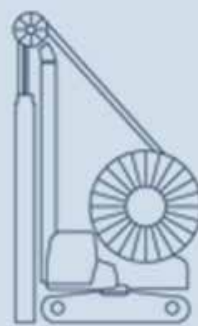


Hydraulic joystick TH5 / TH6



Hydraulic pilot control device TH7

- Function optimizing of the control components as well as in application-specific solutions especially for excavators, backhoe loaders, tractors, truck-mounted cranes, cranes and drilling equipment
- Precise, efficient control of travel and implement hydraulics
- Electro hydraulic systems for more operating comfort and safety
- Design-to-Region



## Compact Hydraulics

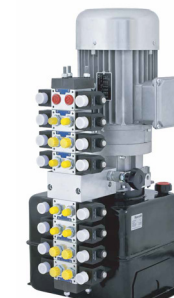
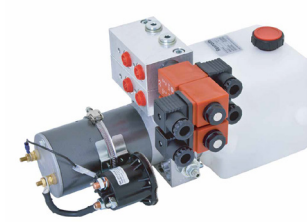
### Cartridge valves



### Hydraulic Integrated Circuit (HIC)



### Compact Power Module (CPM)



### Compact Directional Valves (CDV)



### Compact Motion Control (CMC)

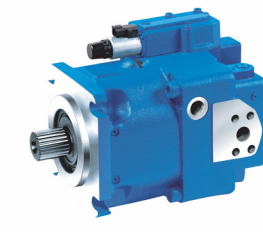


- Broad range of products – unique in the market:
- Cartridge valves, hydraulic integrated circuits, load holding and motion control valves, compact power modules, compact directional valves, sleeve valves for line mounting
- Global engineering and specialist network
- Fast Prototyping
- New: Control plus and Air Control load holding valves\*, Garbage Truck Block

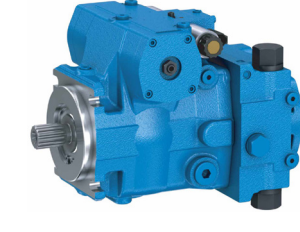


## Hydraulics Pump, Motor and Gearbox

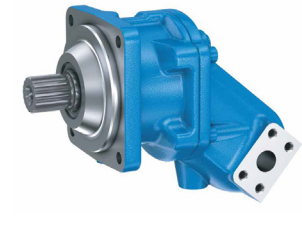
### Pump



**Variable pumps, open circuit**  
A1V, A4V, A7V, A8V, A10V, A11V



**Variable pumps, closed circuit**  
A4VG/VTG/CSG, A10VG, A22VG

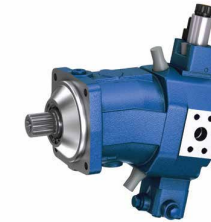


**Fixed pumps**  
A2F, A4F, A7F



**Gear pumps**  
AZP, ...

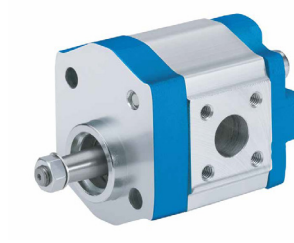
### Motor



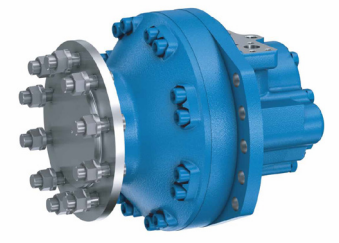
**Variable motors** : A6VM/VE, A10VM/VE



**Fixed motors** : A2FM/E



**Gear motors** : AZMF/AZMN/AZMG



**Radial piston motor** : MCR

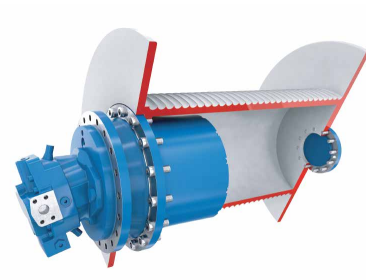
### Gear



**Travel gear** GFT



**Swing gear** GFB



**Winch gear** GFT-W

- Perfectly functioning individual components are good- Perfectly functioning system are even better. Rexroth enables customers to obtain all of their hydraulics solutions from single source, with a peace of mind that comes from knowing they are buying components that are among the best in their class.