

## PACKING LIST

Frame	pcs
Column	1
Feet	1
Outer pipe for feet	2
End pipe	3
Top plate	1
Rubber clamp	4
Rubber washer	12
Hole cap	2
Control box / Hand control	pcs
Control box	1
Hand control	1
AC cable	1
Screws	pcs
Screw for feet, M8x15mm	4
Screw for outer pipe for feet, M6x16mm	4
Screw for top plate, M8x16mm	4
Screw for end pipe, M6x16mm	6
Screw for hand control, Ø4x22mm	2
Screw for table top, Ø5x20mm	12

## Tightening torque

Screw for feet and tabletop	Maximum 10Nm
Screw for hand control	< 6Nm
Screw for end pipe and outer pipe-feet	Maximum 10Nm
Screw for top plate	Maximum 10Nm

**Make sure all screws are tightened, also after a period of use!**

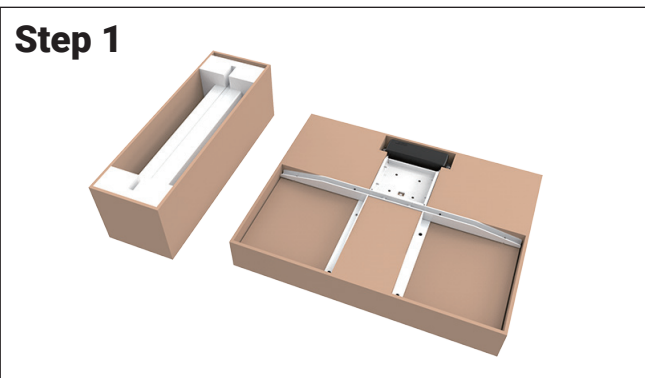
## Reset the desk before use

Press both up and down buttons at the same time for 3 seconds. Continue pressing the buttons until both columns are in lowest position. When finish reset, the control box makes a sound and the buttons can be released. Now the system is operational.

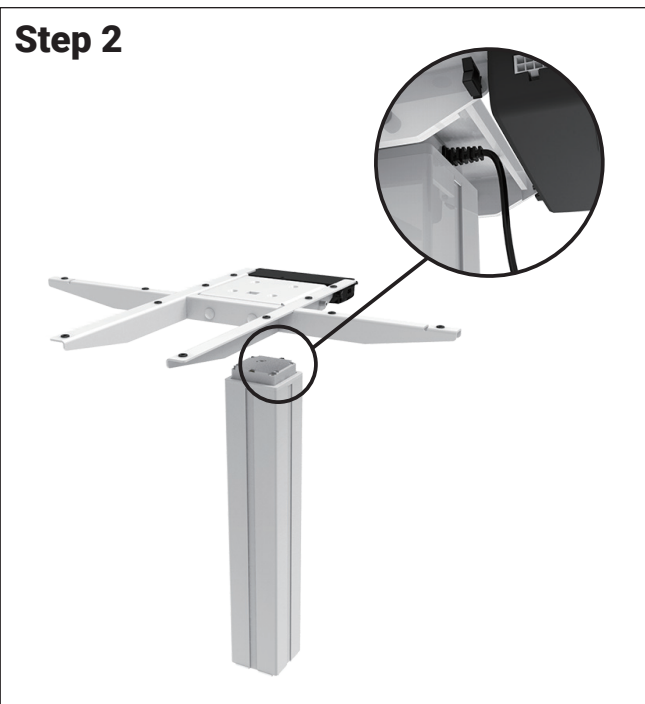
## WARNING

Carefully arrange all the cables not to be damaged by tabletop screws.

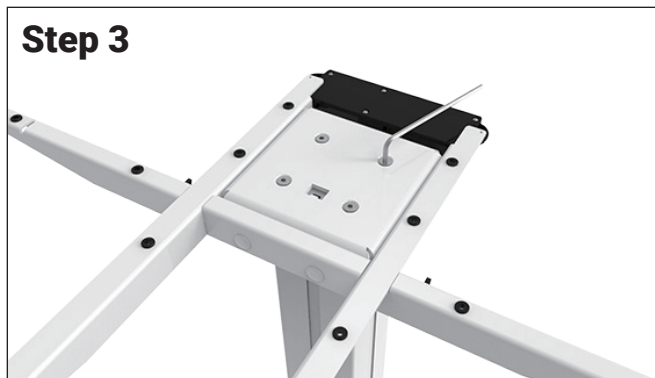
### Step 1



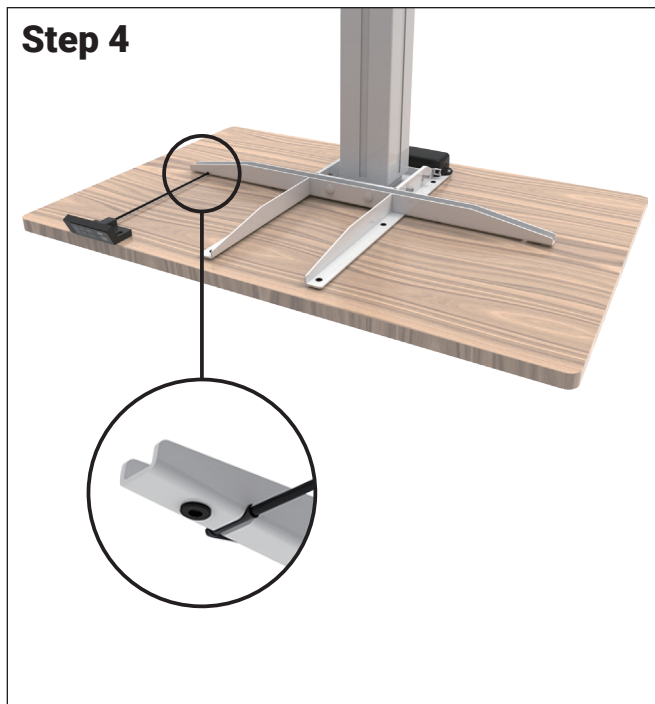
### Step 2



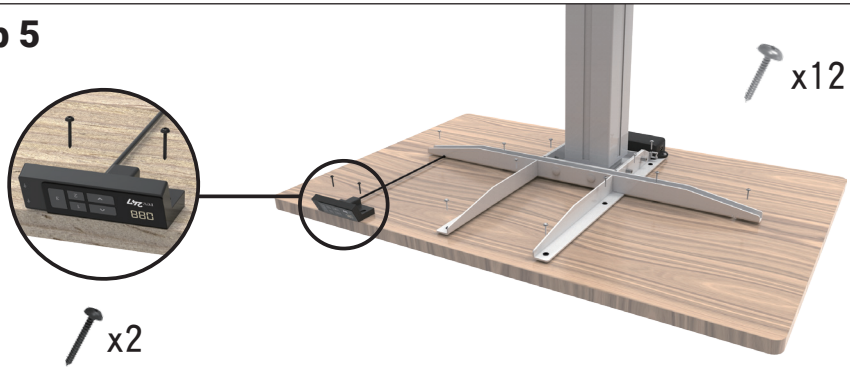
### Step 3



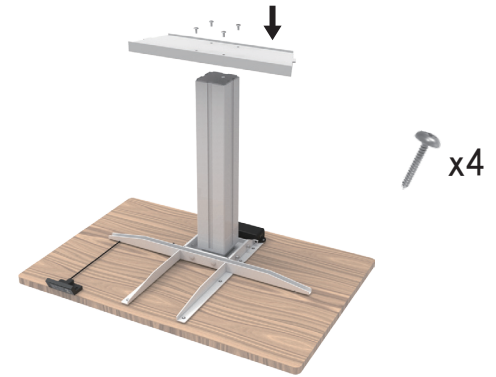
### Step 4



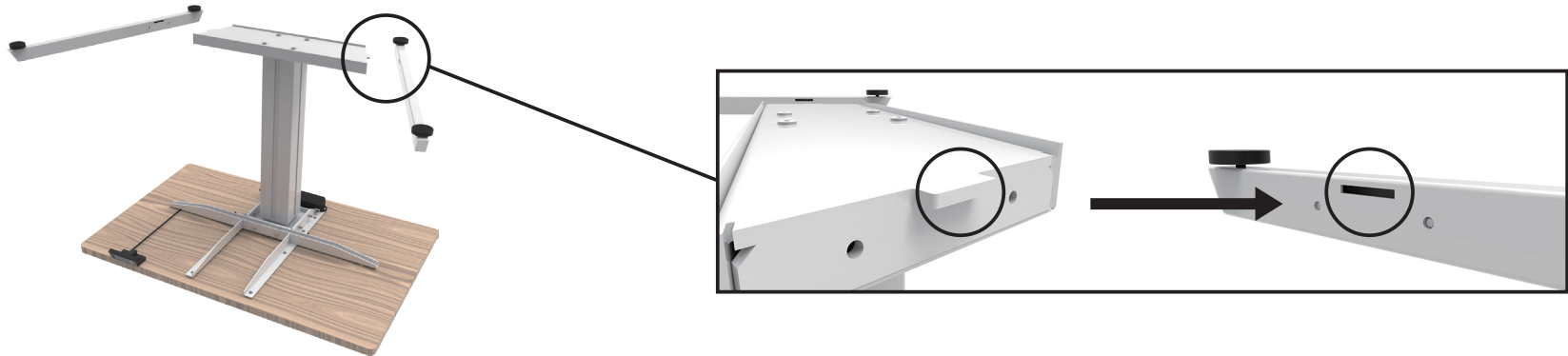
### Step 5



### Step 6



### Step 7



### Step 8



### Step 9

