

## PACKING LIST

Frame	pcs
Column	2
Long feet	2
End pipe	2
Outer pipe	4
Connection pipe	2
Cable clamp	8
Rubber grip	4
Rubber washer	18
Hole cap	4
Screws	pcs
Screw for motor house / Outer pipe, M6x16mm	8
Screw for feet, M10x16mm	8
Tailstock for connection pipe, M10x20mm	8
Screw for tabletop, Ø5x20mm	14
Screw for hand control, Ø4x22mm	2

## Tightening torque

Tailstock	Maximum 6Nm
Screw for motor house and outer pipe	Maximum 10Nm
Screw for feet and tabletop	Maximum 10Nm
Screw for hand control	< 6Nm

**Make sure all screws are tightened, also after a period of use!**

## Reset the desk before use

Press both up and down buttons at the same time for 3 seconds. Continue pressing the buttons until both columns are in lowest position. When finish reset, the control box makes a sound and the buttons can be released. Now the system is operational.

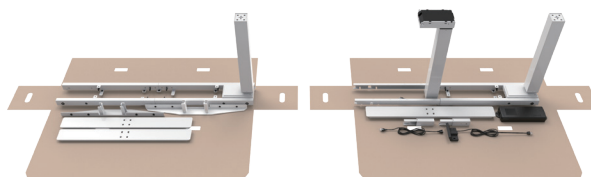
## WARNING

Carefully arrange all the cables not to be damaged by tabletop screws.

## PACKING LIST

Frame	pcs
Column	1
Short feet	1
Short Outer pipe	2
Outer pipe	2
Connection pipe	2
Cable clamp	6
Rubber grip	2
Rubber washer	6
Hole cap	2
Control box / Hand control	pcs
AC cable	1
Motor Extension cable	1
Hand control	1
Control box	1
Screws	pcs
Screw for motor house / Outer pipe, M6x16mm	4
Screw for feet, M10x16mm	4
Tailstock for connection pipe, M10x20mm	6
Screw for tabletop, Ø5x20mm	8
Screw for control box, M4x6mm	2

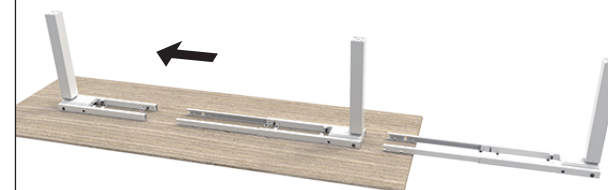
## Step 1



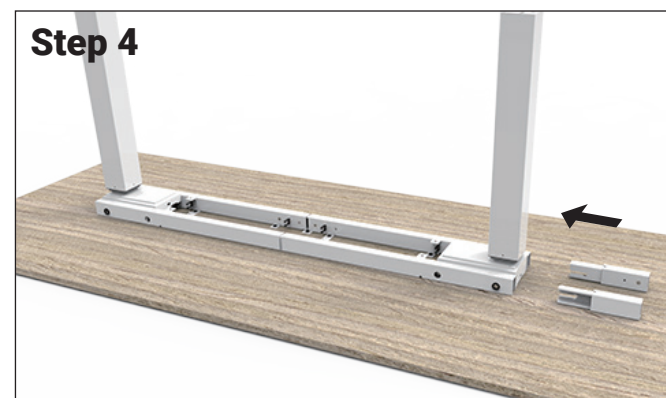
## Step 2



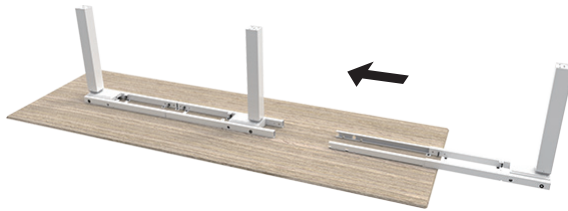
## Step 3



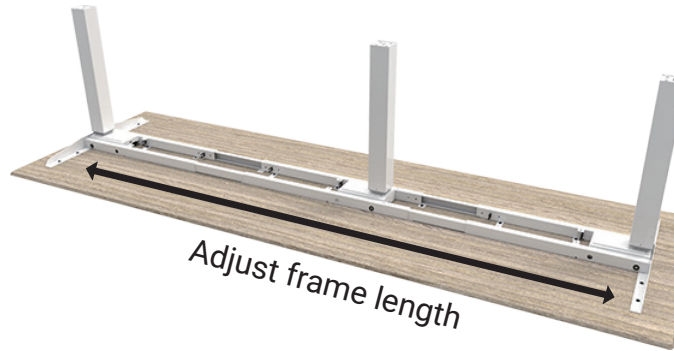
## Step 4



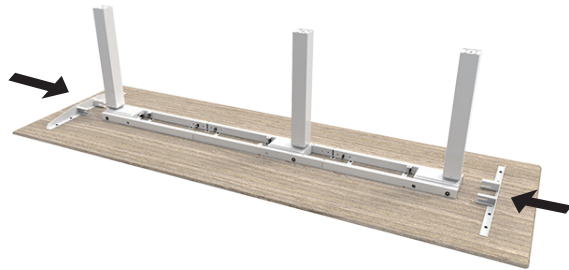
**Step 5**



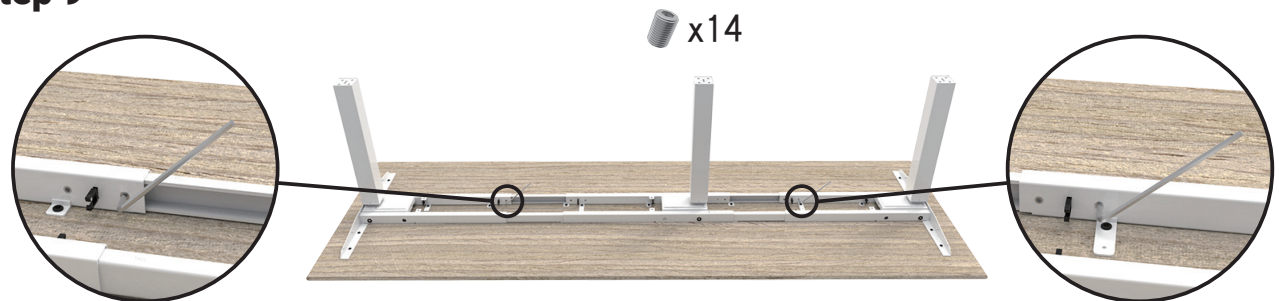
**Step 8**



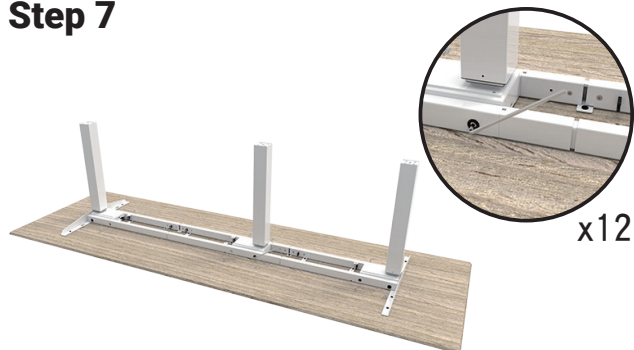
**Step 6**



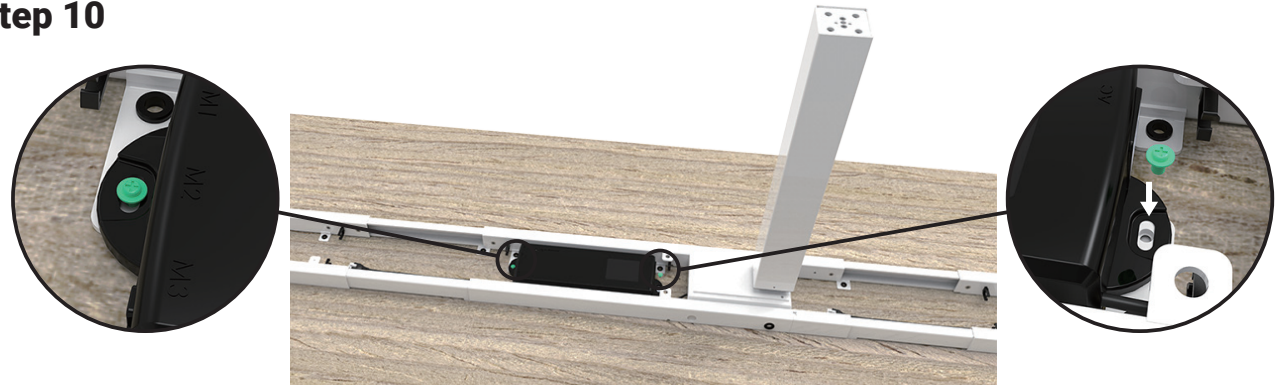
**Step 9**



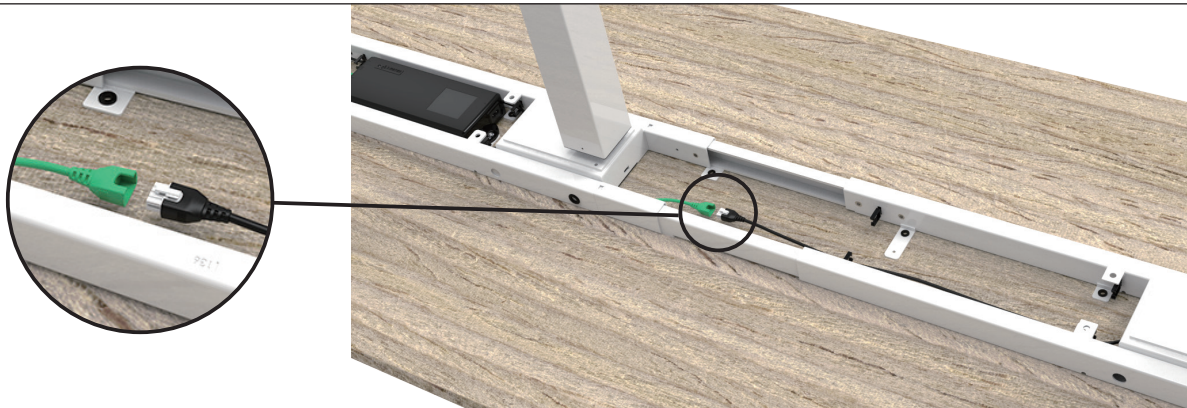
**Step 7**



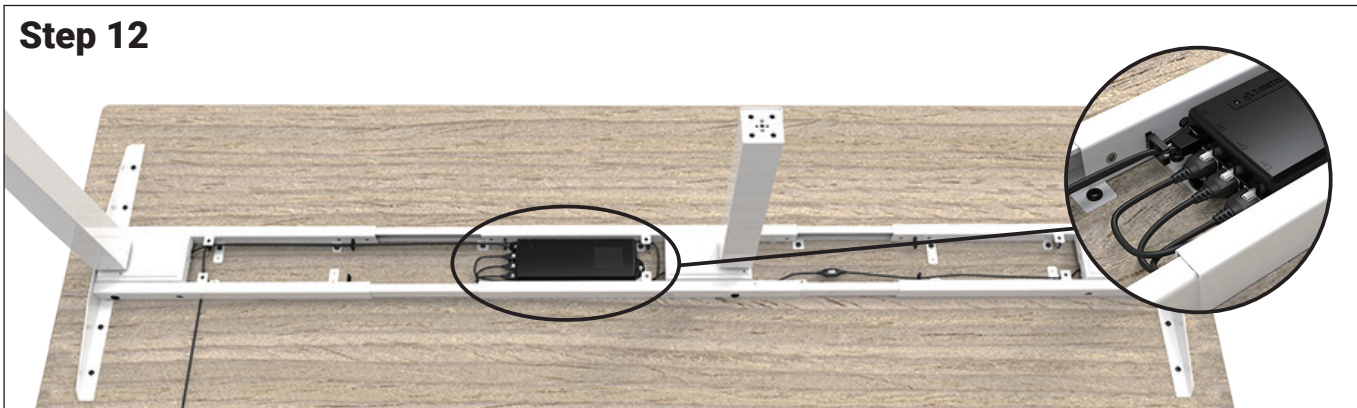
**Step 10**



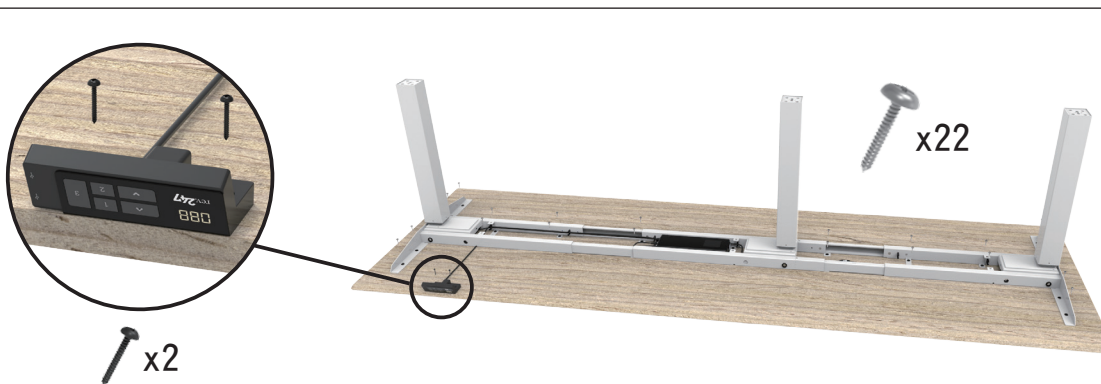
**Step 11**



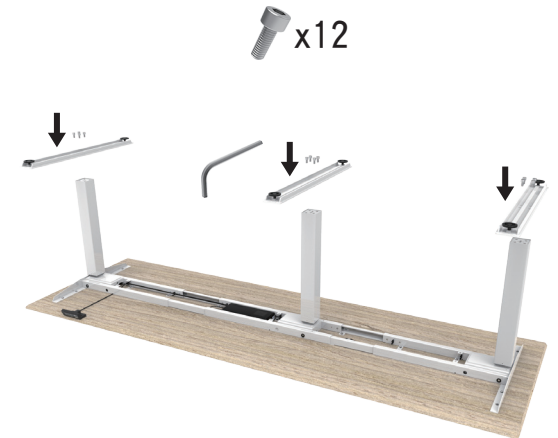
**Step 12**



**Step 13**



**Step 14**



**Step 15**

