

Hand Control Programming REV440



For Service or Warranty Contact REV247 at:

605.753.0110

800.743.7738

www.rev-247.com

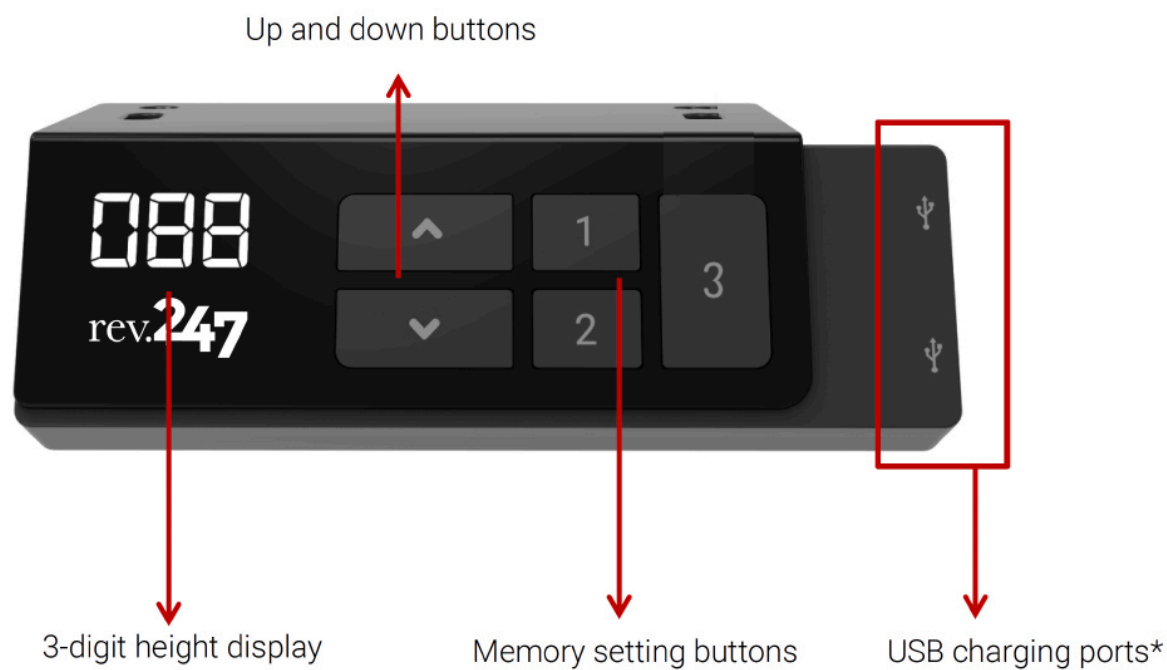
Contents

Contents	2
Disclaimer	3
1. User Interface Guide.....	4
2. Reset.....	5
3. Adjusting the Height.....	6
4. Setting the Memorized Position	6
5. Setting the Upper and Lower Height Limit	7
6. Presetting the Desk Starting Height	8
7. Switching Metric and Imperial Unit	9
8. Error Codes	10
9. Power Saving Function - Waking Up the Control	11

Disclaimer

This user manual is ONLY for generic REV247 products. Manufacturers may have altered settings causing them to differ from this user manual. Please contact the manufacturer for a revised manual if the product settings are different than this manual.

1. User Interface Guide



*USB charging ports: For charging electronic devices

*Heights will be displayed in inches.

2.Reset

1. Simultaneously press ▲ and ▼ for 3 seconds. Continue pressing the buttons until both columns are in lowest position. When finished with the reset, the control box makes a beep sound and the buttons can be released.



2. When finished with the reset, the display will show starting height in inches.
3. Users must conduct a reset when the desk is operated for the first time.

3. Adjusting the Height

Press ▲ or ▼ button until the desk reaches the preferred height.

4. Setting the Memorized Position

REV440 supports a maximum of 2 memory positions.

How to memorize position:

1. Adjust the desk to the desired height.
2. Press the preferred memory button (1, 2, or 3), with ▲ or ▼ for 2 seconds. Once the display either shows P1, P2, or P3 the position is memorized.
3. Press (and hold) button 1, 2, or 3 to move the desk to memorized position. [\(Note 1\)](#)



[Note 1:](#) It depends on the control box setting whether the memory button needs to be held or not.

[Note 2:](#) When preferred memory heights are set, rev.247 desks offer one-touch controls on preset heights.

5. Setting the Upper and Lower Height Limit

A. Setting the upper height limit:

- (1) Adjust the desk to the preferred upper height limit.
- (2) Press ▲ and ▼ buttons together less than 3 seconds, holding ▲ and release ▼ button. (Note 2)
- (3) Re-press ▼ for more than 3 times in a slow pace.
- (4) A beeping sound will notify you that the process has completed.

B. Disable the upper height limit:

- (1) Move the desk to the upper height limit that is being set.
- (2) Repeat the instruction #2~4 above to disable the upper limit setting.

C. Setting the lower height limit:

- (1) Adjust the desk to the preferred lower height limit.
- (2) Press ▲ and ▼ buttons together less than 3 seconds, holding ▼ and release ▲ button. (Note 3)
- (3) Re-press ▲ for more than 3 times in a slow pace.
- (4) A beeping sound will notify you that the process has completed.

D. Disable the lower height limit:

- (1) Move the desk to the lower height limit that is being set.
- (2) Repeat the instruction #2~4 above to disable the lower limit setting.

Note 2: Some control boxes may not support setting the upper and lower height limit functionality.

Note 3: Over 3 seconds will direct to "Reset" mode.

6.Presetting the Desk Starting Height

- (1) Press ▼ button until the desk reaches its lowest position and then release ▼ button. Re-press ▼ button again for 5 seconds and the digital display will flash for 10 seconds.
- (2) Adjust the starting height number with the ▲ or ▼ button.
- (3) After 10 seconds, the display will stop flashing and this will confirm that you have successfully set the starting height.

7. Switching Metric and Imperial Unit

- (1) Press memory button 1, 2 and 3 button for 5 seconds.
- (2) The digital display will show "C-I". If there is no further instruction operated within 5 seconds, the system will go to the normal operation mode.



- **How to choose a metric unit**

Press the button 1, the digital display will show "C" to stand for centimeter.

- **How to choose an imperial unit**

Press the button 2, the digital display will show "I" to stand for inch.

8.Error Codes

The digital display shows the error codes below to suggest the issues that users may encounter during the operation. [\(Note 4\)](#)

Error code	Descriptions
000	Resetting
E00	Not reset completely
E01	Overuse protection
E02	Unbalance protection
E03	Anti-collision
E04	T-touch Protection
E11	M1 Motor over-current protection
E12	M2 Motor over-current protection
E13	M3 Motor over-current protection
E21	No Hall sensor from M1
E22	No Hall sensor from M2
E23	No Hall sensor from M3
E31	No current from M1
E32	No current from M2
E33	No current from M3

[Note 4: Some control box may not support this function.](#)

9. Power Saving Function - Waking Up the Control

- If no buttons have been pressed for 25 seconds, display goes off. Press any button to light up the display again.
- If no buttons have been pressed for 30 seconds, the system goes to <0.1W standby mode. (Note 5) Long press any button to wake the system up. The digital display will show desk height again.

Note 5: It depends on the control box whether it support 0.1W standby mode or not.