

2021-2022

INNOVATIVE CARE SOLUTIONS

PHYSICAL THERAPY EQUIPMENT CATALOG



800.743.7738 | phsmedicalsolutions.com

Treatment Tables	4
Traction Tables	10
Rehab Equipment	27
Mobile Solutions	33
Carts	35
Cabinets	37
Whirlpool Tables	46
Clinical Accessories	47
Apollo Cold Laser	49
Our Brands	51

INNOVATIVE CARE SOLUTIONS

PHS Medical designs and manufactures a wide variety of innovative therapy, medical, and pain management products. With locations in Watertown, SD and Springfield, OR, PHS Medical launched in 2013 as a brand of Pivotal Health Solutions. Since then, we have emerged as an industry leading manufacturer driven by standards of safety, reliability, and quality.

INNOVATION - To stand out and foster innovative thinking to solve problems and continuously push the creative barriers of product selection, performance, and price.

EDUCATION - To exceed customer expectations by educating our employees, vendors, dealers and customers on the benefits of working for and with Pivotal Health Solutions.

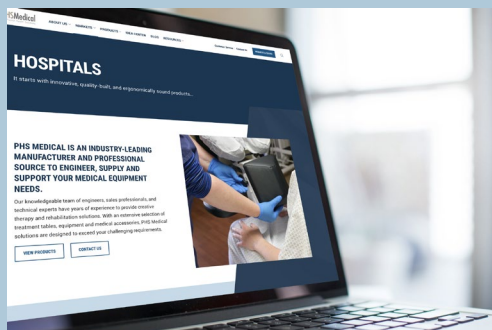
DOMINATION - We have a relentless desire to compete and win.

PHS Medical is continuously developing, evolving and improving products to deliver unmatched value to customers in both product and service. It's our priority to be the difference in providing innovative health solutions.



800.743.7738
phsmedicalsolutions.com

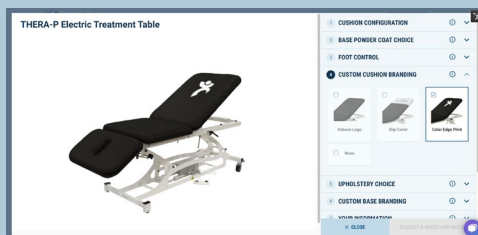
WHAT'S NEW?



We are pleased to announce the launch of our updated website!

The focus of this redesign was to make it easier for our users to learn and locate valuable information about our solutions for physical therapy and medical equipment. Keep up to date on our latest trade shows, webinars and company announcements under the Resources tab.

BUILD YOUR PRODUCT



We added a Build Your Product section inside the Idea Center with a product configurator to help customers bring their vision to life by choosing colors, features, and branding options.

NEW



Elevating Therapy Tilt Table

Comfortable, safe and durable the Elevating Therapy Tilt Table is ideal for nursing home and rehabilitation facility use.

See page 6 for more information

NEW



Thera-P Traction Table

Comprised of 4 or 6 section cushion configurations, the Thera-P Traction Table offers a friction-free gliding lumbar section to increase vertebral separation.

See page 10 for more information

NEW



Bolsters & Stools

Achieve correct ergonomic positioning with our durable and versatile collection of bolsters and stools. Choose from a variety of sizes, colors, and styles to provide maximum support.

See page 48 for more information

NEW



Boxes, Weights, Bands, and more

Our plyometric and lift boxes are designed for strength and endurance training, physical therapy, and rehabilitation for workplace-related tasks.

See pages 27-32 for more information



Thera-P Electric Treatment Table

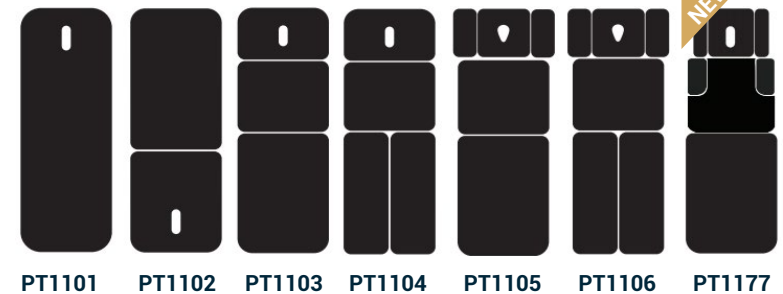
Ease of use, multiple options and a sleek but durable design make the THERA-P line of electric treatment tables the choice of therapists everywhere. Seven top options allow therapists to choose the table that best meets their needs and that ensures patients' most comfortable positioning. The THERA-P electric treatment table is constructed of precision-cut flat and tube steel for durability and style. It also has a whisper-quiet lift system (with elevating foot switch) and easy-to-operate caster system for better ergonomics.

STANDARD FEATURES:

- **Load Capacity:** 650 lbs.
- 27"W x 77"L x 17-35"H
- Durable and stylish steel base
- White powder coat base
- Whisper quiet lift system with single foot control pedal
- Height adjustment: 17-35"
- 27" Wide cushions in 7 different configuration options
- 2" High density foam cushions with rounded corners
- Low profile locking casters
- Head section angle range: +40° to -90° (PT1177: +35° to -45°)
- Lower extremity angle range: 0 to 65° (PT1177: 0-75°)
- Armrest horizontal range: 0 to 45°
- Armrest vertical range: 0 to 7"
- 7 Section configuration includes electric elevating midsection with hand control
- ADA Compliant



7 different top configurations



650 lb. Load Capacity

ADA Compliant

Thera-P Electric Treatment Table

Comparison Chart - What top configuration fits your needs?

 **BUILD PRODUCT**

Visit the Build Your Product tool on our website to customize your table!



1 Section Thera-P
PT1101/EPT01

Perfect for a general exam table. Patients have the ability to perform stretching and strengthening exercises on a smooth one section top surface.



5 Section Thera-P
PT1105/EPT05

This top configuration can be used for any prone positioned treatments as it has movable drop arms and head piece.



2 Section Thera-P
PT1102/EPT02

This also serves as a great general exam table with the added ability to position patients in a relaxed flexed position. Great for geriatric patients who can't be positioned in a flat supine position.



6 Section Thera-P
PT1106/EPT06

This top configuration features everything you need to perform your desired treatments. With it's split leg, drop arms, and movable headpiece treating a variety of conditions just became easier and more convenient.



3 Section Thera-P
PT1103/EPT03

Great for manual therapy work on the neck as the head section drops 90 degrees to allow the clinician unrestricted access to the posterior neck muscles. This top configuration can also be changed to have the patient placed in a comfortable seated position without the need for pillows and bolsters.



7 Section Thera-P
PT1177/EPT77

This is our most versatile top configuration featuring adjustable head and arm rests, drop-down shoulder section and motorized midlift option. Ideal for neck and shoulder injuries with the capability of postural drainage.



4 Section Thera-P
PT1104/EPT04

This top configuration is ideal to work on lower leg specific injuries with the individual split leg system. Great for manual therapy work on the neck as the head section drops 90 degrees to allow the clinician unrestricted access to the posterior neck muscles.

Options

240V Tables available

PT303x - 30"W Cushion Configuration

S1135 - Manual Elevating Midsection

(Only available on EPT03 & EPT05)

S1077 - Dual Foot Control Pedal

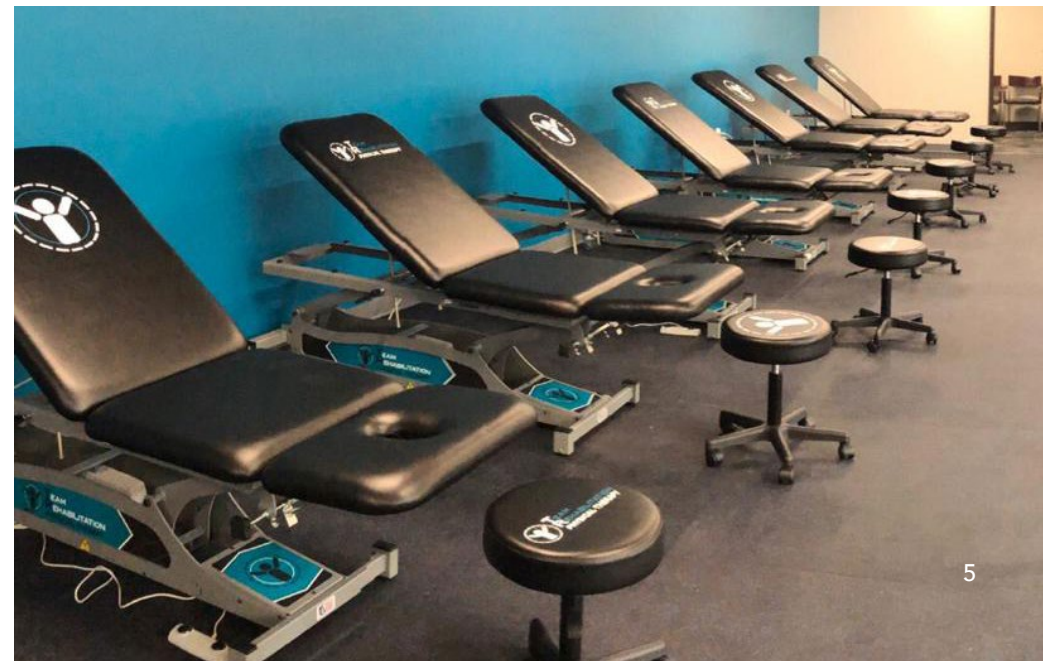
S1078 - Dual Foot Bar Control

S2078 - Dual Foot Bar Control with Front Foot Bar Adder

EPTPH01 - Paper Roll Holder

(Only available on EPT01, EPT02, or EPT03)

PT10001 - Nose Hole Plug



NEW



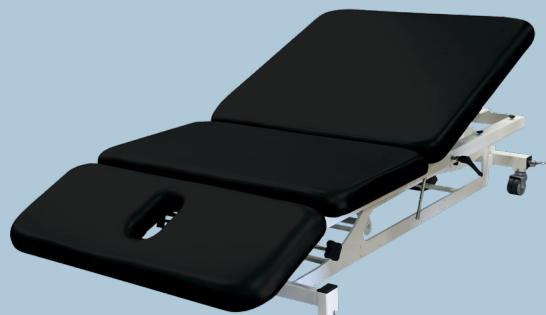
EPT03

Essential Thera-P Electric Treatment Table

STANDARD FEATURES:

- Load Capacity: 500 lbs.
- Individual locking casters
- 2 year warranty

Ease of use, multiple options and a sleek but durable design make the Essential THERA-P line of electric treatment tables the affordable choice of therapists everywhere. Seven top options allow therapists to choose the table that best meets their needs and that ensures patients' most comfortable positioning. The Essential THERA-P electric treatment table is constructed of precision-cut flat and tube steel for durability and style. It also has a whisperquiet lift system with elevating foot pedal. Designed with simplicity in mind, the Essential THERA-P electric treatment table offers a standard white powder coat base.



Bariatric Thera-P Electric Treatment Table

STANDARD FEATURES:

- Load Capacity: 650 lbs.
- 40"W x 77"L x 17-35"H

4 different top configurations



PT1111

PT1112

PT1113

PT1115

Our bariatric model is built strong for larger patients, thanks to precision-cut flat and tube steel. Four top options allow physical therapists to choose the table that best meets their needs and that ensures patients' most comfortable positioning. It also has a whisper-quiet lift system (with elevating foot control pedal) and easy-to-operate caster system for better ergonomics. Softly rounded corners and a layer of thick 2" foam add the finishing touch.



Elevating Therapy Tilt Table

STANDARD FEATURES:

- Load Capacity: 350 lbs.
- 27"W x 82"L x 22.5-39.5"H
- (2) Safety straps
- Extra large foldaway foot plate with non-skid tape
- Hand control for tilt
- Single foot control for lift
- Nose hole with plug
- (4) Individual locking casters



HY1002

The Elevating Therapy Tilt Table is ideal for nursing home and rehabilitation facility use. Smooth and secure elevation adjusts from 22.5-39.5" high, and tilts from a horizontal position to 90°. A heavy-duty powder coat frame supports a load capacity of 350 lbs. and includes an extra-large foldaway foot plate with non-skid surface and dual safety straps for added stability. The 2" high density foam cushions with two configurable options are designed for patient comfort.

Build your brand...

Request your FREE mockup:

800.743.7738

phsmedicalsolutions.com

BRANDING AVAILABLE

Add custom branding to your rehabilitation center or clinic. Choose custom branding like decals or brand a cushion with a full color logo to customize the look and feel of your space.



Leg & Shoulder Therapy (LAST) Table

Ergonomically designed, the Leg & Shoulder Therapy (LAST) Table with Hi-Lo Elevating Base is the first treatment/exercise table that supports bilateral training and specific anatomical positioning to achieve the desired results for both professional athletes and weekend warriors. The elevating base ensures that even patients with limited mobility have easy access in any setting. While standard treatment tables tend to limit range of motion, the unique design of the LAST table allows for patient positioning and range of motion to perform a wide range of activities using one stable platform. To maximize your efforts as physical therapists, athletic trainers and clinicians, the LAST table is a must for your rehabilitation practice or athletic training rooms.

STANDARD FEATURES:

- **Load Capacity:** 650 lbs.
- 30"W x 84"L x 19-37"H
- Adjustable top with standard elevating base
- White powder coat base
- Whisper quiet lift system
- Height adjustment: 19-37"
- Single foot control pedal
- Elevating back: 0 - 70°
- Elevating legs: 0 - 90°
- Leg height: 17"
- Drop legs: 0 - 90°
- 2" High density foam cushions
- Nose hole
- Rounded corners
- Low profile locking casters
- ADA Compliant

**PT9060
with options**



Patent # 10,857,052



**CAB-100-LST
with options**

Patent # 10,857,052

CAB-100-LST Leg & Shoulder Treatment (LAST) Cabinet

The Leg and Shoulder Treatment Cabinet supports bilateral treatment and specific anatomical positioning to achieve the desired results for patients, while the practitioner can store treatment equipment at arm's reach. The unique design of the CAB-100-LST allows for patient positioning and range of motion to perform a wide range of activities using one stable platform.

STANDARD FEATURES:

- **Load Capacity:** 500 lbs.
- 30"W x 84"L x 34"H
- 3 Section cabinet
- (4) Hinged doors on each side
- Pass through open storage on foot end
- (1) Fixed height shelf in each section
- Drop out leg/shoulder area for improved range of motion
- Available in wood only
- 110° Euro hinges on doors
- Black wire pull handles
- Nose hole



650 lb. Load Capacity

Nose hole is standard



ME2002

ME2000 Elevating Treatment Table

With its quiet and smooth elevation, this elevating treatment table delivers better ergonomics for the therapist and comfort for the patient. The table height ranging from 24-36" allows patients easy access to the table with just a press of the foot pedal.

STANDARD FEATURES:

- **Load Capacity:** 400 lbs.
- 28"W x 77"L x 24-36"H
- Height range: 24-36"
- Flat 2" high density foam cushion with nose hole

Nose hole included



ME2001

ME2001 Bariatric Elevating Treatment Table

With a wider top, the ME2001 provides the flexibility to work with a larger patient without taking away comfort. The sleek white powder coat steel base gives a polished and sophisticated look while providing storage.

STANDARD FEATURES:

- **Load Capacity:** 400 lbs.
- 40"W x 84"L x 24-36"H
- Height range: 24-36"
- Whisper quiet lift system



ET-102
with options

Electric Treatment Cabinet

The Electric Treatment Cabinet sets the standard in functionality, ease of use, storage and convenience. With an easy-to-operate adjustable height ranging from 29" to 44", and the numerous cabinet and top options, this cabinet serves most therapists' needs.

STANDARD FEATURES:

- **Load Capacity:** 500 lbs.
- 30"W x 83"L x 29-44"H
- Height range: 29-44"
- Durable metal cabinet with black powder coat

Multiple Configurations



SThera-P-
3007-SS

Signature Spa Series Hands Free Deluxe Electric Table

The elegant design of our Signature Spa Series Hands Free Deluxe Electric Table is ideal for practices where style is as important as function.

STANDARD FEATURES:

- **Load Capacity:** 650 lbs.
- 30"W x 73"L x 17-35"H
- Height range: 17-35"
- Whisper quiet lift system

ADA Compliant

NEW

Thera-P™ Traction Table

Comprised of 4 or 6 sections, the Thera-P Traction Tables use electric power to help with manual adjustment, allowing for ease of use and control of table positioning. For the practitioner, the Thera-P Traction Table offers a 20-37" full height adjustment and section mobility so the patient can be placed in the proper position for maximum results with minimum effort. Each section is adjustable, providing numerous achievable patient positioning options.



Knee & Cervical Bolster Set and Traction Belt



Traction Head



Cervical Attachment & Head Pillow

STANDARD FEATURES:

- Load Capacity: 650 lbs.
- 27"W x 78"L x 20-37"H
- Durable and stylish steel base
- White powder coat base
- Whisper quiet lift system
- Height adjustment: 20-37"
- Dual foot bar control
- 27" Wide cushions in 2 different top configuration options
- 2" High density foam cushions
- Rounded corners
- Friction-free gas shock cushion separation with lock and unlock lever
- (2) Low profile locking casters
- Head section angle range: +30° to -90°
- Armrest horizontal range: 0 to 45°
- Armrest vertical range: 0 to 7"
- Lift back: 0 to 70°

TXT-1004

TXT-1006



TXT-1004 with options

Branding Options Available

10

DOC Decompression Table

The DOC Decompression Table takes your chiropractic practice to the next level with its unique design and impressive list of standard features. The state-of-the-art digital command center controls specific vertebral targeting, including axial rotation and lateral flexion; correctly positions patients in antalgic posture; offers separate lumbar and cervical decompression programming; and delivers continuous readout and graphing of treatment protocols. The digital command center also controls table elevation and rear flexion, all at the push of a button. Patients may be treated in supine or prone positions and from various angles.



STANDARD FEATURES:

E9011-B

- **Lifting Capacity:** 350 lbs.
- 30"W x 77"L x 21"H
- Electric Elevation Range: 21 - 29"
- Lateral Flexion Positioning and Axial Rotation
- Cervical capture headpiece
- Traction belting system enhances restraint for optimal decompression

How Is Spinal Decompression Different From Traction?

Regular traction stretches your spine and muscles simultaneously. But if you only stretch the spine, your body naturally "braces" for the next stretch, limiting the effectiveness of the treatment. The "overall stretching" commonly used in traction can also trigger painful muscle spasms. Decompression therapy is different from conventional spinal traction because it alternates between stretching and relaxation. The relaxation stages trick your body into staying relaxed and therefore maximizes the load and the effectiveness of the treatment.

Decompression tables should also allow your doctor or therapist to target your treatment area in three different dimensions. This allows practitioners to target their treatment by isolating specific spinal discs, compared to traction, which often just "stretches" the entire spine. Your health care provider should also be able to completely customize your decompression treatment by changing the amount of stretch (load); the number of stretches/relax stages; the time it takes to reach each peak stretch/relax stage; and many other settings. These options allow them to personalize the session for your age, weight, and condition and to adjust your treatments as they track your results.

- Lifting Capacity: 350 lbs.
- Lateral Flexion Positioning and Axial Rotation
- User-defined treatment hold and relax times
- Traction belting system enhances restraint for optimal decompression
- Electric Elevation Range: 21 - 29"
- Cervical capture headpiece
- Real-time digital treatment tracking
- Speed control
- Pre-programmed lumbar and cervical decompression protocols

Digital Command Center includes:

- Specific vertebral targeting
- Interactive color display
- Separate lumbar and cervical traction/decompression programming
- Continuous readout and graphing of treatment parameters
- Reference library - including patient setup and training materials





6 Things To Consider When Choosing A Treatment Table

Treatment tables serve a variety of purposes and are often the most used piece of furniture in certain settings. Because of the daily use these tables get, it's important to consider and understand a couple things before you make your purchase.

1. DURABILITY - Treatment and therapy tables need to be able to withstand the daily use that is required of them. They also need to be able to endure the rigors of certain treatments. PHS Medical carries multiple treatment tables in different hardwoods and also a table constructed of aluminum. These sturdy materials provide a lifetime of use as well as

minimal (if any) maintenance. The H-Brace and 6-Leg construction of some of PHS Medical's tables eliminates tipping and wobbling. These configurations reinforce the bottom frame to stay steady when weight is applied to the table. Because of all the daily use treatment tables get, it is nice to have a table(s) with a warranty in place. If anything were to happen to your PHS Medical treatment table, the fix could potentially be covered by our warranty (outlined to the right).

2. EASY TO USE AND MAINTAIN - An important factor of a treatment table is its ease of use. Tables that can be adjusted effortlessly are ideal. Clunky mechanisms that make noise can be extremely distracting for patients. PHS Medical offers tables with manual lift back adjustments that are smooth and easy to use. Upholstery that is easy to care for is also a plus. Keeping your tables clean will help them stay in good shape as well as sanitary for each patient.

3. SIZE - Every physical therapy setting is unique and has different size parameters based on space available and patient type. A smaller table can be geared toward pediatric patients while a wider table can be more accommodating for larger patients. PHS Medical has treatment tables that are available in a variety of different sizes to meet your needs.

4. STORAGE CAPABILITIES - Treatment tables that have storage space are ideal for facilities that see multiple patients a day and offer a variety of different treatments. Storage options are convenient for tools, machines, bolsters/pillows and cleaning supplies that all get used in that specific area or table. PHS Medical has numerous storage options available. From an open shelf to pull-out drawers, you can choose the storage configuration that is right for your practice.

5. PATIENT-FRIENDLY - It is a good idea to think about your patients when you are looking at treatment tables. Keeping them safe and comfortable should be a top priority. PHS Medical offers patient-friendly options on some of their treatment tables that include nose-hole cushions, adjustable lift backs, rounded cushion corners and high density foam cushions.

6. APPEARANCE - Whatever your facility's colors or style, you should consider tables that match and complement its color scheme. PHS Medical has a variety of upholstery and stain colors to choose from as well as custom branding options like logo slip covers and custom logo cushions available on certain tables.

When choosing treatment tables for your space, it is important to choose tables that are best suited for your specific needs. PHS Medical offers a variety of treatment table styles, options and price points.



PHS Medical Treatment Table

Warranty

PARTS WARRANTY

- 10 Years on aluminum frames (structural only)
- 5 Years on steel or wood frames (structural only)
- 3 Years on laminate, phenolic or plastic frames (structural only)
- 2 Years on electrical components, standard foam and standard upholstery
- 1 Year on moving components, hardware, accessories and custom-printed upholstery and graphics

LABOR WARRANTY

- Labor covered on repairs in 1st year

BUILD PRODUCT

Visit the Build Your Product tool on our website to customize your table!



TESS-2772
with options

Classic Wood Treatment Table

Custom build your wood treatment table to meet the specific needs of your practice. Each table comes standard with solid hardwood legs and base, H-brace construction, thick 3/4" plywood top, comfortable 2" high density foam cushion, softly rounded corners and dual-bolted leg assembly that folds down for easy shipping. Make it your own by adding length or width, shelves or a cabinet that can be mounted on either end. Patient-friendly customizations include a nose hole and 70° manual lift back with 6 position elevation.

STANDARD FEATURES:

- **Load Capacity:** 550 lbs.
- 27 or 30"W x 72 or 78"L x 31"H
- Available in Flat and Lift Back configurations
- Solid oak or maple wood frame
- 4 Leg H-brace construction
- 2" High density foam cushion
- Rounded corners
- Dual-bolted folding leg assembly for convenient shipping



Essential Wood Treatment Table

Each table comes standard with a poplar hardwood frame, H-brace construction and dual-bolted folding leg assembly for easy shipping. Customize by adding length, width, shelves or a cabinet that can be mounted on either end. Other options available include patient-friendly customizations consisting of a nose hole cushion and a 70° manual lift back with 6 position elevation.

STANDARD FEATURES:

- **Load Capacity:** 500 lbs.
- 27 or 30"W x 72 or 78"L x 31"H
- Solid poplar hardwood frame
- H-brace construction
- Dual-bolted folding leg assembly for convenient shipping
- 2" High density foam cushion
- Rounded corners



TEWT-2772
with options

NEW



HT100

HT100 Hand Therapy Table

The HT100 height-adjustable hand therapy table delivers an effortless transition at the touch of a button. Powerful dual motors lift quickly and quietly from 23-49.125"H in seconds, while three programmable memory presets save time and energy.

TOP CONFIGURATIONS:



STANDARD FEATURES:

- **Load Capacity:** 264 lbs.
- 48, 60 or 72"W x 24 or 30"D x 23-49.125"H (Sit or stand)
- Electrical elevation: 23-49.125"H
- A wide base provides improved accessibility for all clients
- (4) Leveling feet
- Hand control with:
 - Constant smooth movement and soft start/stop
 - (3) Programmable memory locations
 - (2) USB ports
- Pre-assembled frame kits significantly reduces installation time
- Designed for therapy and rehabilitation
- Charcoal finish on base
- Anti-collision safety feature
- Battery option available

NEW



HT1700

HT1700 Hand Therapy Table

The HT1700 Hand Therapy Table helps to manage productivity and comfort. A convenient hand control provides effortless sit to stand capability in a matter of seconds. Designed for smaller spaces, with a variable height range adjusting from 23 up to 49.125", you can go from small to tall, and anywhere in between.

TOP CONFIGURATIONS:



STANDARD FEATURES:

- **Load Capacity:** 154 lbs.
- 36" Diameter or 36"W x 36"D x 23-49.125"H (Sit or stand)
- Electrical elevation: 23-49.125"H
- (4) Leveling feet
- Hand control with:
 - (3) Programmable memory locations
 - (2) USB ports
- Pre-assembled frame kits significantly reduces installation time
- Designed for therapy and rehabilitation
- Charcoal finish on base
- Anti-collision safety feature
- Battery option available

NEW



HT1900

HT1900 Hand Therapy Table

Choose versatility on the go with the HT1900 Hand Therapy Table. Optional locking casters promote easy mobility along with constant, smooth elevation to just the right height. Five top configurations, multiple table sizes, and a variety of colors to choose from gives you the choice to invest in the way you work best to change your workday.

TOP CONFIGURATIONS:



STANDARD FEATURES:

- **Load Capacity:** 176 lbs.
- 36 or 42" Diameter, 36" x 36", 48" x 36" or 52" x 42" x 27.875-47.625"H (Sit or stand)
- Electrical elevation: 27.875-47.625"H
- (5) Top configurations
- Designed for therapy and rehabilitation
- (4) Leveling feet
- Hand control with:
 - Constant smooth movement and soft start/stop
 - (3) Programmable memory locations
 - (2) USB ports
- Pre-assembled frame kits significantly reduces installation time
- Charcoal finish on base
- Anti-collision safety feature
- Battery option available

Aluma Elite Treatment Table



Aluma Elite Modality Carts

The Aluma Elite Modality Carts are constructed of durable aluminum and are offered in multiple configurations to suit your storage needs. See page 36 for more information

The dependable Aluma Elite Treatment Table is the perfect centerpiece for each athletic training facility. The extraordinary load capacity of 750 lbs. and the standard 2 tape holders and aluminum shelf for storage make the Aluma Elite tables the perfect table for physical therapists and patients alike. Customize your treatment table to meet your needs with multiple cabinet options that provided ample storage, or the 70" manual Lift back and 45" Split Leg cushion options.

STANDARD FEATURES:

- **Load Capacity:** 750 lbs.
- 30"W x 78"L x 31"H
- Durable aluminum construction
- Tough powder coat finish
- Tape holder on each end and a bottom shelf (not included with enclosed cabinet option)
- Graphics Package: includes (1) school logo/name decal on each tape holder and (1) on bottom shelf
- 2" Semi-firm foam cushion
- Rounded corners



A4201
with options



A4201
with options

Available with shelf, cabinet
with drawers or sliding doors on both sides



A4327LB-2772
with options

Aluma Elite Basic Treatment Table

Custom build your aluminum treatment table to meet your specific needs. The dependable Aluma Elite Basic Treatment Table is the perfect centerpiece for each therapy or rehab facility. The extraordinary load capacity of 650 lbs. and the welded aluminum frame make the Aluma Elite Basic Treatment Table the perfect table for your office, clinic, gym, or facility. Each table comes standard with welded aluminum frame, H-brace construction, comfortable 2" high density foam cushion, and softly rounded corners. Make it your own by adding length or width, laminate shelves or a cabinet that can be mounted on either end.

STANDARD FEATURES:

- Load Capacity: 650 lbs.
- 27 or 30"W x 72 or 78"L x 31"H
- Welded aluminum frame
- Tough powder coat finish
- Available in Flat and Lift Back Configurations
- H-brace construction
- Rounded corners
- 2" High density foam cushion

CAB-090N Treatment & Recovery Cabinet

Practitioners will save time by storing their recovery system within arm's reach, which empowers patients to control treatment if needed, allowing the practitioner to multi-task. The boot rack and vented drawer minimizes setup time, storage, and clutter.

STANDARD FEATURES:

- Load Capacity: 600 lbs.
- Dual extension drawer (22"L x 17"W x 17"H) accommodates the NormaTec product line
- Dual extension boot rack (44"L x 24"W) accommodates 2 pairs of NormaTec boots
- Boot rack contains 2 trays (24"L x 11"W x 4.5"H) that hold the NormaTec control units
- 30"W x 85"L x 32"H
- Available in wood or laminate finishes
- Wood cabinets available in natural finish or black stain
- 2" High density foam cushion
- Rounded corners
- 55° Lift back and 45° split legs



Ask about other Recovery Carts and Storage.



CAB-090N with options

NormaTec recovery system not included.



SR-011



A5010



PT9080

Hip & Knee Flexion Treatment Table

The flexible split leg design of this solid hardwood treatment table makes it extremely functional for multiple treatment positions. Each padded leg cushion can be manually adjusted to the desired hip and knee flexion positions making treatments easier and more comfortable for the patient and therapist.

STANDARD FEATURES:

- **Load Capacity:** 800 lbs.
- 30"W x 81.5"L x 32"H
- Dual brace support
- Rounded corners
- Manual lift back
- Elevating back: 0 - 70°
- Elevating legs: 0 - 90°
- Hip/Knee flexion
- Solid hardwood construction
- 2" High density foam cushion
- Bottom shelf for added storage

PT9082



PT9081 and PT9082 Hip & Knee Flexion Treatment Cabinets

The flexible split leg design and open (PT9081) or concealed (PT9082) storage solutions of the PT9081 treatment cabinet provide therapists with versatility and functionality all in one. Each leg cushion can be manually adjusted to allow for hip and knee flexion positions that make treatments more convenient and comfortable.

STANDARD FEATURES:

- **Load Capacity:** 600 lbs.
- 30"W x 81.5"L x 31"H
- **PT9081:** 3 Section cabinet, open on both sides
- **PT9082:** 3 Section cabinet, (6) Hinged doors on front with a solid back, 110° Euro hinges on doors
- (1) Adjustable shelf in each section
- Available in wood or laminate finishes
- 2" High density foam cushion
- Lift back cushion
- Mechanical friction lock elevating back: 0 - 70°
- Elevating legs: 0 - 90°
- Hip & knee flexion
- Rounded corners
- Black wire pull handles

PT9081





CAB-010

CAB-010 Treatment Cabinet

The CAB-010 model features closed storage for a neater presentation, with a three section cabinet with one adjustable self in each section and six hinged doors on the front.

STANDARD FEATURES:

- **Load Capacity:** 600 lbs.
- 30"W x 78"L x 31"H
- 3 Section cabinet
- Rounded corners
- (6) Hinged doors on front with a solid back
- (1) Adjustable shelf in each section
- Available in wood or laminate finishes
- 110° Euro hinges on doors
- 2" High density foam cushion
- Black wire pull handles



CAB-020
with options

CAB-020 Treatment Cabinet

The CAB-020 model features an open three section cabinet with one adjustable shelf in each section.

STANDARD FEATURES:

- **Load Capacity:** 600 lbs.
- 30"W x 78"L x 31"H
- 3 Section cabinet, open on both sides
- (1) Adjustable shelf for each section
- Available in wood or laminate finishes
- 2" High density foam cushion
- Rounded corners

Treatment Cabinets

Your practice will shine with the addition of a new treatment cabinet. Our line of cabinets meet the functional needs of your practice, with ample storage and lift back and split leg options.

View more treatment cabinets:
phsmedicalsolutions.com



CAB-LB



CAB-LB-NGS



CAB-SL



CAB-RSL

Lift Back and Split Leg Options available with Manual Gas Shock or Ratchet Style Systems



CAB-050
with options

CAB-050 Treatment Cabinet

The CAB-050 model is a two section cabinet with sliding doors, ideal for storing larger items.

STANDARD FEATURES:

- **Load Capacity:** 600 lbs. • 30"W x 78"L x 31"H
- 2 Section cabinet
- (2) Sliding doors on front with a solid back
- (1) Adjustable shelf in each section
- Available in wood or laminate finishes
- 2" High density foam cushion
- Rounded corners
- Black wire pull handles



CAB-070
with options

CAB-070 Treatment Cabinet

The CAB-070 model is a three section cabinet that features a combination of open and closed storage, with four hinged doors on each side, open storage under foot end and one adjustable shelf in each section.

STANDARD FEATURES:

- **Load Capacity:** 600 lbs. • 30"W x 78"L x 31"H
- 3 Section cabinet • (4) Hinged doors on each side
- Open storage under foot end
- (1) Adjustable shelf in each section
- Available in wood or laminate finishes
- 110° Euro hinges on doors
- 2" High density foam cushion
- Rounded corners
- Black wire pull handles



CAB-130

CAB-130 Treatment Cabinet

The CAB-130 model features closed storage for a neater presentation, a three section cabinet with one adjustable shelf in each section, and four hinged doors on both sides.

STANDARD FEATURES:

- **Load Capacity:** 600 lbs. • 30"W x 78"L x 31"H
- 3 Section cabinet • Rounded corners
- (4) Hinged doors on both sides
- (1) Adjustable shelf in each section
- Available in wood or laminate finishes
- 110° Euro hinges on doors
- 2" High density foam cushion
- Black wire pull handles

NEW Configurable Treatment Cabinets Available!

Edge Options Treatment Cabinets



CAB-160
with options



CAB-170
with options

Our line of cabinets meet the functional needs of athletic trainers and therapists, with ample storage plus 60° lift back and 45° split leg options. The CAB-160 and CAB-170 Edge-Options Treatment Cabinets feature a customizable three section cabinet. Apply your team or organization logo to the top and to the cabinet exterior.

CAB-160 STANDARD FEATURES:

- 30"W x 78"L x 31"H
- Load Capacity: 600 lbs.
- Open, customizable 3 section cabinet
- Pass through storage accessible on both sides
- Available in wood or laminate finishes
- 2" High density foam cushion
- Rounded corners
- Black wire pull handles
- 4" Toe kick
- 110° Euro hinges on doors
- (1) Adjustable shelf in each section with doors

CAB-170 STANDARD FEATURES:

- 30"W x 78"L x 31"H
- Load Capacity: 600 lbs.
- Customizable 3 section cabinet with solid back
- Available in wood or laminate finishes
- 2" High density foam cushion
- Rounded corners
- Black wire pull handles
- 4" Toe kick
- 110° Euro hinges on doors
- (1) Adjustable shelf in each section with doors

NEW OPTION on all treatment cabinets with lift back or split leg options



CAB-LB-NGS
60° Lift Back Cushion
(Ratchet Style with No Gas Shock)



CAB-RSL
45° Split Leg Cushion
(Ratchet Style)



FESS-LAB

Combination Lab Table/Desk

The Combination Lab Table/Desk is a desk or treatment table ideal for classroom training. The table is constructed of solid hardwood with a flat, laminate top. Some on site assembly required.

STANDARD FEATURES:

- Load Capacity: 450 lbs.
- 27"W x 72"L x 32"H
- Solid hardwood frame
- 4 Leg construction
- Flat, laminate top
- 24" Clearance for stools
- Caster option available



FESS-LAB-6L with custom branded pad

Classroom/Lab Treatment Table

A multi-purpose desk and treatment table perfect for a clinic or classroom setting. The table is constructed of solid hardwood with a flat, laminate top. Add storage to your table by adding 2 open cubbies.

STANDARD FEATURES:

- Load Capacity: 600 lbs.
- 27"W x 78"L x 32"H
- Solid hardwood frame
- 6 Leg construction
- Flat, laminate top
- 31.5" Clearance for stools (without cubbies)
- Caster option available



WMFTT-2472

Wall Mount Folding Treatment Table

The Wall Mount Folding Treatment Table is a fold out treatment table ideal for small spaces. The table is constructed of solid hardwood with a flat, seamless 2" high density foam cushion.

STANDARD FEATURES:

- Load Capacity: 450 lbs.
- 24"W x 72"L x 31"H
- Solid hardwood frame
- 2" High density foam cushion
- Durable wall mounting plate
- Nose Hole option available (left side only)



SCHOOLS

PHS Medical is passionate about helping schools and students with our school program, and we strive to demonstrate our commitment to the educational mission of Pivotal Health Solutions.

Our School Program provides special pricing on PHS Medical equipment for physical therapy and teaching schools so teachers and students may perform cutting edge treatment with access to long lasting and high-performance equipment available at a substantially reduced cost.



800.743.7738
phsmedicalsolutions.com

PHS MEDICAL CASE STUDY: ROWAN-CABARRUS COMMUNITY COLLEGE PTA PROGRAM

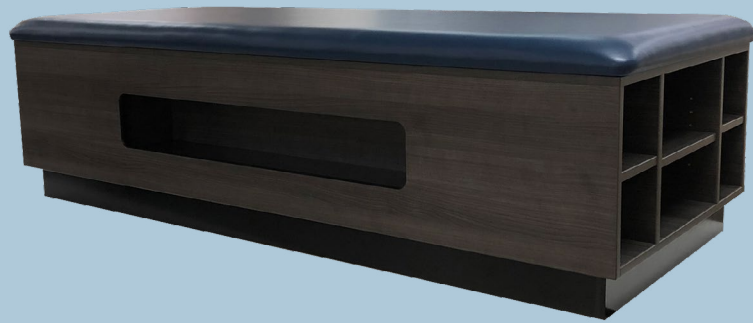
The Rowan-Cabarrus Community College in Salisbury, NC uses PHS Medical Classroom/Lab tables in their Physical Therapy Assistant Program. Program Director Anna Marie Prado, PTA, M.Ed, shares her experience working with Pivotal Health Solutions.

“ We needed strong, durable tables for the students to use as desks as well as treatment tables. We also wanted them to be portable so that we could move them out of the way when we needed more floor space. We had excellent service, and we love our tables.”

- Anna Marie Prado, PTA, M.Ed & Program Director



NEW



Deluxe Stretch Table

Our Deluxe Stretch Table is perfect for Stretch Therapists to perform passive, resistive, PNF, dynamic, and manual muscle manipulation for their patients. The 2" high density foam is durable and will prevent patients from sinking into the cushion, which limits their flexibility. The 700 lb. load capacity allows both the therapist and patient to be full weight bearing on the table without compromising the stability of the table.

STANDARD FEATURES:

- **Load Capacity:** 700 lbs.
- 34"W x 78"L x 22"H
- Available in wood or laminate
- Glue and dowel construction
- 2" High density foam cushion
- Rounded corners
- Black toe-kick plate
- Storage area on one side
- Divided cubby section (one end only)
- One adjustable shelf in center section of divided end cubby



MAT-4872-4L



MAT-4884-6L

Classic Wood Mat Table

Solid hardwood construction means our 4-Leg Wood Mat Platform Table is built for strength and stability during practitioner-assisted exercise and other treatments.

STANDARD FEATURES:

- **Load Capacity:** 450 lbs.
- Sizes available: 4'x6', 4'x7', 5'x7' and 6'x8'
- Solid hardwood frame and 4 legs
- 3/4" Plywood top
- 1.5" High density foam cushion
- Rounded corners
- Triple-bolted leg assembly
- ADA Compliant

**6 leg option
available with
load capacity of
700 lbs.**



Wall Mount Mat Table

The Wall Mount Mat Table is a fold out mat table ideal for small spaces. A platform attaches to the wall in the back, while the three front legs and cushion fold out away from the wall when needed.

STANDARD FEATURES:

- **Load Capacity:** 450 lbs.
- Sizes available: 4'x7' or 5'x7'
- Solid hardwood frame and legs
- 3/4" Plywood top
- 1.5" High density foam flat cushion
- Rounded corners
- Triple-bolted leg assembly
- 10" Depth when folded
- ADA Compliant

Aluma Elite Wall Mount Mat Table



WM1001

The Aluma Elite Wall Mount Mat Table is a fold out treatment table ideal for small spaces. The table is constructed of durable aluminum with a flat 2" high density foam cushion. Three legs attach to the wall, while the two front legs and cushion fold out away from the wall when needed. A durable wall mounting plate is included (wall fasteners not included).

STANDARD FEATURES:

- **Load Capacity:** 600 lbs.
- 48"W x 84"L x 18"H
- Durable aluminum construction
- Tough powder coat finish
- 2" High density foam
- Wall mounting plate
- ADA Compliant

Aluma Elite Mat Table

Our Aluma Elite mat table is built to handle the harshest environments. This new mat table is fabricated with a rugged aluminum frame that maintains its structure and integrity. Custom graphics are included on the tape holders while you can choose the frame, accent and upholstery color.

STANDARD FEATURES:

- **Load Capacity:** 800 lbs.
- Durable aluminum construction
- Leveling feet
- Rounded corners
- 48, 60 or 72"W x 84 or 96"L x 21"H
- Tough powder coat finish
- 1.5" Semi-firm foam cushion

Available with or without elevation (21 - 31"H)



A4495 with options



A4520-EL
with options

Aluma Elite Elevating Mat Table

Our Aluma Elite mat table is built to handle the harshest environments. This new mat table is fabricated with a rugged aluminum frame that maintains its structure and integrity. Choose from a fixed height mat table or an elevating mat table. Custom graphics are included if the storage shelf option is selected.

STANDARD FEATURES:

- **Load Capacity:** 1000 lbs.
- Durable aluminum construction
- Tough powder coat finish
- Leveling feet
- 1.5" Semi-firm foam cushion
- Rounded corners
- Elevation option: hand control is mounted on one side
- Graphics package includes: (1) school logo/name decal on each tape holder (1 on each end) (Only available with storage shelf option)



PT2000-47

PT2001

PT2000 Bariatric Hi-Lo Mat Table

The PT2000 Bariatric Hi-Lo Mat Table is ideal for the rehabilitation setting and is available in a range of sizes to provide your facility with the option of delivering optimum care for larger patients.

STANDARD FEATURES:

- **Load Capacity:** 1000 lbs.
- Available in 4'x7', 5'x7' and 6'x8' configurations
- Height range: 18-33"
- Durable steel base with powder coat finish
- 1.5" High density foam cushion
- Rounded corners
- Single foot control
- Convenient drop down casters
- ADA Compliant



Pmat-3630

Portable Wood Mat Table

Our space-saving Portable Wood Mat Table provides an ideal surface for stretching, therapeutic exercise or massage, yet it can be quickly and easily stored out of the way for more room when you have limited space.

STANDARD FEATURES:

- **Load Capacity:** 800 lbs.
- Table weight: 41 lbs.
- Cable Lock system
- Dual knobs
- Vinyl coated aircraft cables
- Solid extra rigid birch frame with inverted truss
- 9" on center dual-end accessory ports
- 1" Extra firm foam
- 36"W x 78"L x 17-25"H
- Low height range: 17-25"
- Full length piano hinge
- Reiki end panels

NEW

REHAB EQUIPMENT

Weights & Weight Kits



NDS

Neoprene Dumbbell Set:

- Designed for strength and training purposes
- Set includes (1) of each weight, 1-10 lbs.
- Wipe clean surface for cleaning and sanitation purposes



OCW

Original Cuff Wrist & Ankle Weight Set:

- Full set includes 2 of each (1 lb, 1.5 lb, 2 lb, 2.5 lb, 3 lb, 4 lb, 5 lb), (1) 7 lb, and (1) 10 lb)
- Double safety closure
- Filled with lead free steel shots



REB

Roylan Energizing Exercise Band Set:

- Elastic bands for working out, rehabilitation, and stretching exercises
- Latex bands measure 5" wide
- Includes five resistance levels for progressive workouts
- Packaged in boxes that allow for easy distribution



TSW

Theraband Soft Weight Set:

- Soft, weighted balls that are constructed of Pliable PVC shells that have a 4.5" diameter
- Set includes: (6) Weights (1.1 lbs, 2.2 lbs, 3.3 lbs, 4.4 lbs, 5.5 lbs, and 6.6 lbs)
- Ideal for strength training and muscle toning as well as rehabilitation regimens
- Weight marked in pounds and kilograms on the surface of each weighted ball
- Features a durable, wipe-clean surface that promotes hygienic use



RWB

Rehab Weight Bar Set:

- Able to be used sitting down, standing up or by those with a single extremity
- Set includes: 3 Weight bars (1 lb, 2 lbs, and 3 lbs)
- Assorted color and weight options give the user visual progression
- Constructed of a wipe-clean surface
- Bars are 30"L (76 cm) and 1.5" (3.8 cm) in Diameter



Weight Kits and Storage Carts Available

PHS MEDICAL CASE STUDY: BIG STONE THERAPIES

Big Stone Therapies, LLC in Watertown, SD uses PHS Medical Aluma Elite basic treatment tables and mat tables at their therapist-owned private practice. Physical Therapist and Managing Partner Trisha Rieffenberger shares her experience working with Pivotal Health Solutions.

“ PHS Medical provided great customer service and met our deadline to deliver the tables before our open house. The tables are clean looking and durable. We also appreciate the ability to customize our brand on the tables which creates a nice look in our therapy gym.”

- Trisha Rieffenberger, Physical Therapist and Managing Partner

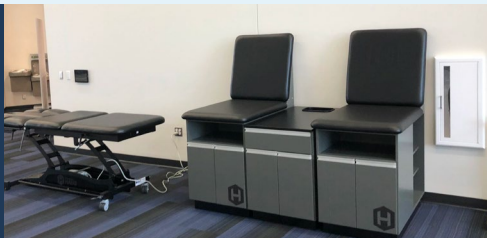


Big Stone Therapies, LLC



VISIT THE IDEA CENTER on our new website

Get inspired and create your vision by taking a glance at our gallery of products and satisfied customers.





PTST-005-WHR
corner configuration

Convertible Staircases

The Convertible Staircase features straight and corner configurations with a 36"W x 36"D x 24"H platform, (4) 36"W x 9"D x 6"H steps and (6) 36"W x 9"D x 4"H steps.

STANDARD FEATURES:

- **Load Capacity:** 350 lbs.
- Stairs can be configured as a straight or corner unit
- Platform is 36"W x 36"D x 24"H
- (4) 36"W x 9"D x 6"H steps and (6) 36"W x 9"D x 4"H steps
- 9' ceiling height required



PTST-001-WHR-ADA

Pass Through Staircases

The Pass Through Staircase features a small footprint with a 30"W x 24"D x 12"H platform, (2) 30"W x 9"D x 6"H steps and (3) 30"W x 9"D x 4"H steps.

STANDARD FEATURES:

- **Load Capacity:** 350 lbs.
- Platform is 30"W x 24"D x 12"H
- (2) 30"W x 9"D x 6"H steps and (3) 30"W x 9"D x 4"H steps
- 8' ceiling height required



PTST-002-WHR-ADA

Straight Staircases

The Straight Staircase features a 30"W x 24"D x 24"H platform, (4) 30"W x 9"D x 6"H steps and enclosed handrails.

STANDARD FEATURES:

- **Load Capacity:** 350 lbs.
- Platform is 30"W x 24"D x 24"H
- (4) 30"W x 9"D x 6"H steps
- 9' ceiling height required

All Staircases Feature:

- **Load Capacity:** 350 lbs.
- Handrails are made from solid hardwood (shipped ready to assemble)
- Anti-slip safety tread on platform and all steps for increased safety
- ADA compliant staircases are available with 11"D steps and handrails with 12" of overhang
- Uprights are made from 2" steel with a black powder coat finish
- Stairs are available in wood or laminate finishes

NEW



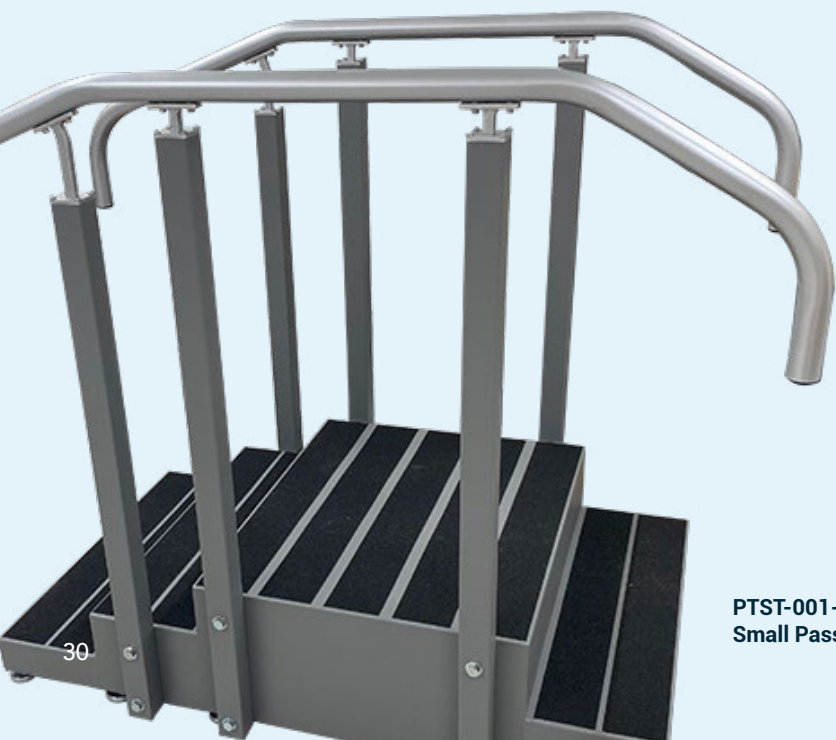
PTST-002-AHR-A- Straight

New! Aluminum Staircases

The Aluminum Staircases feature a welded aluminum construction and smooth aluminum handrails. The uprights are constructed of 2" square aluminum extruded tube with dusty gray powder coat with antimicrobial additive. Anti-slip safety treads are installed on the platform and all steps for increased safety.

STANDARD FEATURES:

- **Load Capacity:** 600 lbs.
- Welded aluminum construction
- Dusty gray powder coat finish with antimicrobial additive
- Handrails have smooth finish
- Uprights are made from 2" square aluminum extruded tube
- Anti-slip safety tread on platform and all steps for increased safety
- 9' Ceiling height required
- Ships fully assembled



PTST-001-AHR-A-
Small Pass Through

Straight Staircase

Platform: 30"W x 24"D x 24"H
(3) 30"W x 10"D x 6"H Steps
Overall: 35"W x 61"D x 60"H

Small Pass Through Staircase

Platform: 30"W x 24"D x 12"H
(2) 30"W x 10"D x 4"H Steps
(1) 30"W x 10"D x 6"H Steps
Overall: 35"L x 61"D x 47.5"H

Plyometric Boxes

Our 3 in 1 wooden plyometric boxes are built out of hardwood plywood, and designed for strength and endurance training. Each box provides 3 different height options for you to choose from. Simply flip the box to a different side and you're ready to go.

STANDARD FEATURES:

- **Load Capacity:** 1,000 lbs.
- Hardwood plywood construction
- 3 Different height options available
- Pre-drilled holes
- Interlocking joints
- Reinforced internal support on larger plyo box
- Sanded edges for safety
- Boxes ship unassembled



Shown with optional logo



Portable Mirrors

The Portable Mirror is specifically designed with distortion free glass and is available with a single or double-sided 72" mirror. It can be moved around your facility hassle-free with its 2" swivel casters to accommodate treatment needs.

STANDARD FEATURES:

- Portable full length mirror
- 24"W x 20"D x 72"H
- Distortion free glass
- 2" Casters
- Laminate or wood options available

Work Conditioning Boxes



The PHS Medical Lift Boxes are designed for patients undergoing physical therapy and rehabilitation. Made with hardwood plywood construction, they are robust and can handle a 100 lb. load capacity. The Lift Boxes feature four handgrip slots, two on each side, for hassle-free handling. Our four lift boxes vary in both size and shape and are perfect for rehabilitative patients to gain confidence and strength by performing a variety of workplace related tasks.

STANDARD FEATURES:

- Load Capacity: 100 lbs.
- Hardwood plywood construction
- Two hand grips on each side

Ambulation Training



The PHS Medical Ramp and Curb Training Set is the perfect product for smaller clinics limited in space or for larger clinics who need to add more ambulation training to the therapy floor.

STANDARD FEATURES:

- Load Capacity: 350 lbs.
- 84"W x 44"W x 8"H
- Hardwood plywood construction
- Adjustable curbs store beneath platform
- Anti-slip safety tread on platform and all steps for increased safety



STANDARD FEATURES:

- The PHS Medical Nested Foot Stools (set of 4) nest for easy, convenient storage.
- Load Capacity: 350 lbs.
 - Overall: 16"W x 20"L x 8"H
 - Hardwood plywood construction
 - Anti-slip safety tread on platform for increased safety



The PHS Medical Rolling Step is great for busy clinics or rehabilitation centers with minimal space.

STANDARD FEATURES:

- Load Capacity: 300 lbs.
- 30"W x 30"L x 8"H
- Hardwood plywood construction
- Anti-slip safety tread on platform for increased safety



**LPRS-
Lift and
Place
Rack
Station**

Lift & Place Rack Station

This occupational therapy tool is used to simulate lifting and loading tasks. The Lift & Place Rack Station features two adjustable shelves to help accommodate various lifting device sizes. It also works well with the PHS Medical work conditioning lift boxes.

STANDARD FEATURES:

- **Load Capacity:** 100 lbs. per shelf
- 30"L x 18"D x 78"H
- Hardwood plywood construction
- Simulates lifting and loading tasks
- (2) Adjustable shelves



Shovel-Station

Shovel Station

The PHS Medical Shovel Station is ideal for improving strength and increasing range of motion. The three angles and gravity flow shelves allow material to fall to the base. The multiple shelf heights allow a varied range of motion for arms, shoulders, legs and back. This simulates on-the-job duties, easily permitting the therapist to evaluate a patient's performance.

STANDARD FEATURES:

- 36"W x 72"L x 60"H
- Hardwood, plywood construction
- (3) Angled gravity flow shelves
- Folding side keeps sand in place
- (4) Safety treads
- Bumper edges
- Plastic shovel and storage hook included



CS100-Calf Stretcher

Wooden Calf Stretcher

Easy to use right out of the box, the incline stretch board is lightweight, portable and features an anti-slip safety tread on the bottom for optimal stability.

STANDARD FEATURES:

- **Load Capacity:** 400 lbs. • 17"W x 13"L x 12"H
- Fully adjustable inclined slant board
- Hardwood plywood construction
- Adjusts to four different angle levels: 10°, 20°, 30°, 40°
- Anti-slip safety tread
- Rubber bottom keeps the bottom of the stretching instrument from slipping during use

**Get your brand
on the sideline!**

**MOBILE
SOLUTIONS**



SmartCarts

The SmartCart™ is durable, functional and convenient. With its heavy-duty 1 1/4" tube steel frame, panel steel construction and ample storage, this product is sure to meet all your mobile taping, evaluation and/or treatment needs.

Available in 4', 6', 6' PRO, 8', 8' Hydration and Single Cooler Hydration Configurations

STANDARD FEATURES:

- 4', 6' & 6' PRO Load Capacity: 800 lbs.
- 8' & 8' Hydration Load Capacity: 1,000 lbs.
- Drawer and removable shelf configurations
- Locking, garage style doors
- Full length pass through storage
- Durable steel frame and panel construction
- 360° Rotating heavy duty locking wheels
- Pull handle and 1.25" receiver hitch
- Lift back cushion(s)
- Graphics package including graphics on all 4 sides

**Aluma Elite
PRO Portable
Workstation
also available**

6" Wider and 5" Longer

Aluma Elite Portable Workstation

The Aluma Elite Portable Workstation, with industry leading mobility features, is PHS Medical's latest solution for sideline treatment and care. Made from aluminum, and complimented with a rugged, textured powder coat finish, this workstation offers an affordable and convenient solution for treating your patients.



STANDARD FEATURES:

- Load Capacity: 750 lbs.
- 24"W x 73"L x 32"H
- Durable aluminum frame
- Textured powder coat finish with optional accent color
- 6" Pneumatic wheels
- Stow-away handle
- Lockable storage cabinet with access from both sides
- Marine grade plastic top
- Graphics Package: includes (2) logo panels on top

PW4000



I9390AE



Portable Aluminum Treatment Table

The Portable Aluminum Treatment Table is rugged yet lightweight and functional. It comes standard with a 2" firm foam system, rounded corners, adjustable height leg system, four field feet, face rest and standard carry case.

STANDARD FEATURES:

- Load Capacity: 600 lbs.
- Table Weight: 37 lbs.
- Lightweight aluminum frame
- Height range 24-33"
- 11-Layer plywood base
- Auto-hold hinge
- 8" on center dual end accessory ports
- 2" Firm foam cushion, black upholstery
- Rounded corners
- Removable field feet
- Black carry case
- Face rest and pillow



A2200
with options



Optional custom branding showcases your school, organization or team

Portable Sideline Table

The all-weather athletic evaluation Portable Sideline Table features a Shiatsu Cable-Lock™ system, durable powder coat frame, 2" firm foam cushion and rounded corners. It comes standard with adjustable height legs, four field feet and carry case.

STANDARD FEATURES:

- Load Capacity: 600 lbs.
- 30"W x 72"L x 29-36"H
- Table Weight: 45 lbs.
- Durable powder coat frame
- Height range: 29-36"
- Shiatsu Cable-Lock™ system
- 2" Firm foam cushion
- Rounded corners
- Removable field feet
- Black carry case



BASIC PRO

Basic Pro Portable Chiropractic Table

Beautifully portable, the Basic Pro portable chiropractic table is still tough enough to withstand the requirements of the most demanding use.

STANDARD FEATURES:

- Load Capacity: 400 lbs.
- Folded Table: 21.5"W x 37"L x 8"H
- Table weight: 46 lbs.
- Thoracic & pelvic drops
- 2" Multi-layer foam
- Black carry case

Stor-Edge™ Modality Carts

The mobility and size of our Stor-Edge™ Modality Carts make it easy for practitioners to bring instruments, supplies and even a writing surface right to each patient during treatment. The added height and width of our Stor-Edge™ Modality Deluxe Carts allow for even more storage options, without sacrificing ease and mobility. Stor-Edge™ Modality Carts are high quality carts available in wood or laminate with many configurations, designed to meet the needs of your practice.



SMC-001

24"W x 18"D x 32"H



SMC-002 with options

24"W x 18"D x 32"H



SMC-003

18"W x 18"D x 30"H



SMC-004

18"W x 18"D x 30"H



SMC-005

18"W x 18"D x 30"H



SMC-006

18"W x 18"D x 30"H



SMDC-001

24"W x 18"D x 38"H



SMDC-002

24"W x 18"D x 38"H



SMDC-003 with options

24"W x 18"D x 38"H



SMDC-005

19"W x 23"D x 38"H

SMDC-006

24"W x 23"D x 38"H



STANDARD FEATURES:

- Available in wood or laminate finishes
- Full extension glides on all drawers
- 110° Euro hinges on doors
- Black wire pull handles
- 2" Swivel nylon casters
- Carts ship fully assembled, except for casters

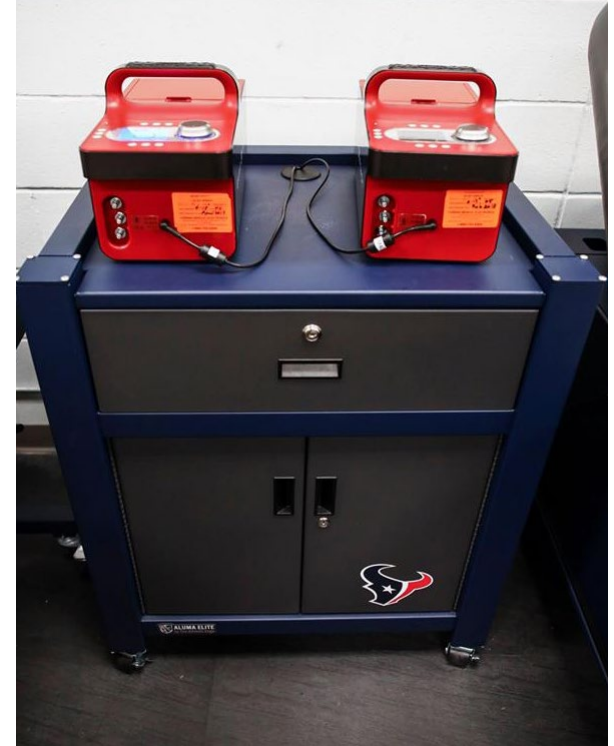


Aluma Elite Modality Carts

The Aluma Elite Modality Carts are constructed of rugged aluminum and are offered in multiple configurations to suit your storage needs. Features include a tough powder coat finish, drawer and door key locks, electrical grommets for easy cord routing, and 2" non-marking casters. Customize your modality cart for your school, team or organization with a custom graphic, included on every cart.

STANDARD FEATURES:

- Load Capacity: 500 lbs.
- Tough powder coat finish
- Durable aluminum construction
- Drawer/door key locks
- Graphics package includes:
custom graphic on one door or drawer
- 31"W x 23"D x 38"H
- 5.5" Drawers
- Aluminum top with electrical grommet for easy cord routing
- 2" Non-marking casters with brakes



A4203



A4204



A4383



A4510

Stor-Edge™ Stationary Cabinets

The stylish stationary cabinet systems provide multi-purpose storage in a variety of options, including base and tall cabinets, shelves or drawers and more - ideal for storing gear and other supplies inside an athletic training room or office.

STANDARD FEATURES:

- Available in wood or laminate finishes
- Cabinets available with or without exterior double doors
- Full extension glides on all drawers
- Black wire pull handles
- Heavy duty overlay hinges
- Weight racks and J-hooks provided where applicable
- Cabinets ship fully assembled
- All cabinets must be fastened to the wall (not included)



**SC-003D
with options**



SC-003



SC-007 with options





SC-003

- 32"W x 23"D x 76"H
- (3) 8" Drawers
- (3) Adjustable shelves
- Slatwall hanger board
- (6) J-Hooks
- **SC-003D:** SC-003 features with (2) Exterior doors



SC-004

- 32"W x 23"D x 76"H
- (5) Adjustable shelves
- **SC-004D:** SC-004 features with (2) Exterior doors



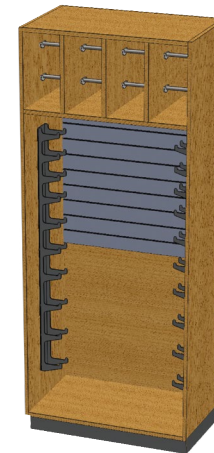
SC-006

- 32"W x 23"D x 76"H
- (4) 11" Drawers
- (2) Fixed shelves
- (6) Adjustable shelves
- **SC-006D:** SC-006 features with (2) Exterior doors



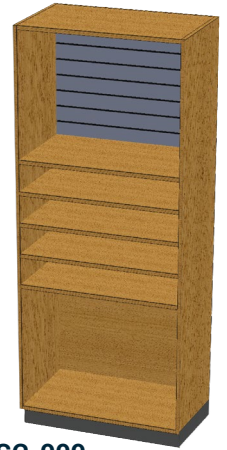
SC-007

- 48"W x 18"D x 84"H
- (15) Fixed cubby storage
- Single Cubby: 15"W x 18"D x 15"H



SC-008

- 32"W x 23"D x 76"H
- (8) Band dispenser bars
- (2) weight hanger racks (10 weights per rack)
- Slatwall hanger board
- (12) J-Hooks
- **SC-008D:** SC-008 features with (2) Exterior doors



SC-009

- 32"W x 23"D x 76"H
- (5) Adjustable shelves
- Slatwall hanger board
- (6) J-Hooks
- **SC-009D:** SC-009 features with (2) Exterior doors



SC-010

- 32"W x 23"D x 76"H
- Bottom storage compartment
- Slatwall hanger board
- (12) J-Hooks
- **SC-010D:** SC-010 features with (2) Exterior doors



SC-011

- 32"W x 23"D x 76"H
- (1) Adjustable shelf
- (1) Clothes rod
- (2) 11" Drawers
- Slatwall hanger board
- (6) J-Hooks
- **SC-011D:** SC-011 features with (2) Exterior doors



SC-012

- 32"W x 23"D x 76"H
- (3) Adjustable shelves
- (6) Storage cubbies
- Slatwall hanger board
- (12) J-Hooks
- **SC-012D:** SC-012 features with (2) Exterior doors



SC-013

- 32"W x 23"D x 76"H
- (2) Adjustable shelves
- (1) Clothes rod
- Slatwall hanger board
- (6) J-Hooks
- **SC-013D:** SC-013 features with (2) Exterior doors



SC-014

- 32"W x 23"D x 76"H
- (2) Adjustable shelves
- (4) 8" Drawers
- Slatwall hanger board
- (6) J-Hooks
- **SC-014D:** SC-014 features with (2) Exterior doors



SC-015

- 48"W x 23"D x 76"H
- (8) Adjustable shelves
- (4) 8" Drawers
- **SC-015D:** SC-015 features with (2) Exterior doors

Aluma Elite Stationary Cabinet

The Aluma Elite Stationary Cabinet is constructed of durable aluminum and features double doors with three point handle/latch mechanism and four adjustable shelves.

STANDARD FEATURES:

- **Load Capacity:** 500 lbs. (100 lbs. per shelf)
- 32"W x 21"D x 72"H
- Durable aluminum construction
- Tough powder coat finish
- 4 adjustable storage shelves (A4302)
- Locks included
- 4 adjustable leveling feet
- Graphics package includes: custom decal on the front doors

NEW!

AESC-008D

- 4 sections for band holders
 - Slat wall
 - Weight rack

AESC-010D

- Slat wall
- False front



AESC-008D



A4302

Stor-Edge™ Multi-purpose Carts

Our custom-built Stor-Edge™ Multi-Purpose Carts keep weights, resistance bands and other tools and equipment at hands' reach. Available in several model options, each is crafted of solid wood or laminate and is made in the U.S. The Stor-Edge™ Multi-Purpose Carts come in many different configurations for a variety of uses and sit on casters for ease and movability.

STANDARD FEATURES:

- Available in wood or laminate finishes
- Full extension glides on all drawers
- Black wire pull handles
- 110° Euro hinges on doors
- Weight racks and J-hooks provided where applicable
- 4" Heavy duty casters
- Cabinets ship fully assembled, except for casters

Weight kits also available



Front



Back

SR-001

- 30"W x 18"D x 72"H
- Front: slatwall & band dispensers
- Back: slatwall
- Sides: weight racks
- (9) 4" Double hooks
- (10) J-Hooks

OPTIONS:

- SR-WK1 - Weight Kit 1
 - (2) 1-10 lbs. Dumbbell sets
 - (1) 16 pc. Hugger weight set
 - (1) 5 Rep. resistance band set
- SR-MI-001 - Mirror
 - 19.75"W x 65.5"H (back side)



Front



Back

SR-002

- 30"W x 24"D x 61"H
- Front: doors with (3) shelves
- Back: slatwall
- Sides: weight racks
- (4) 4" Double hooks
- (10) J-Hooks

OPTIONS:

- SR-WK2 - Weight Kit 2
 - (2) 1-10 lbs. Dumbbell sets
 - (1) 16 pc. Hugger weight set
- TSFO-FHLD
 - Flush mount handles on large doors



Front



Back

SR-004

- 24"W x 24"D x 61"H
- Front: band dispensers
- Back: slatwall
- Sides: weight racks
- (3) 4" Double hooks
- (6) J-Hooks

OPTIONS:

- SR-WK4 - Weight Kit 4
 - (2) 1-10 lbs. Dumbbell sets
 - (2) 1-5 lbs. Dumbbell sets
 - (1) 5 Rep. resistance band set



Front



Back

SR-005

- 32"W x 32"D x 72"H
- Front: cubbies, drop down desk with lock, (3) 8" drawers
- Back: band dispensers & slatwall
- Left side: weight racks
- Right side: mirror
- (4) 4" Double hooks
- (12) J-Hooks

OPTIONS:

- SR-WK3 - Weight Kit 3
 - (2) 1-10 lbs. Dumbbell sets
 - (1) 16 pc. Hugger weight set
 - (1) 5 Rep. resistance band set
 - (1) 1-3 lbs. Weight bar set
- TSFO-FHD
 - Flush mount handles on doors
- TSFO-FHDR
 - Flush mount handles on drawers

*Carts shown with accessories (not included). Photos do not represent weight kits.



Front

Back

SR-007

- 30"W x 18"D x 60"H
- Front: slatwall
- Back: weight racks
- Right side: band dispensers
- Left side: storage compartment
- (4) 4" Double hooks
- (10) J-Hooks

OPTIONS:

- SR-WK3 - Weight Kit 3**
- (2) 1-10 lbs. Dumbbell sets
- (1) 16 pc. Hugger weight set
- (1) 5 Rep. resistance band set
- (1) 1-3 lbs. Weight bar set



Front

Back

SR-006

- 36"W x 36"D x 73"H
- Front: Doors with (2) shelves & (2) 10" Drawers
- Flush mount handles
- Back: weight racks
- Sides: slatwall
- (4) 4" Double hooks
- (12) J-Hooks

OPTIONS:

- SR-WK3 - Weight Kit 3**
- (2) 1-10 lbs. Dumbbell sets
- (1) 16 pc. Hugger weight set
- (1) 5 Rep. resistance band set
- (1) 1-3 lbs. Weight bar set

**Only available in wood with flush mount handles*



Front

Back

SR-008

- 46"W x 26"D x 43"H
- Front: (5) 18"W drawers & (1) 18"W door
- Back: slatwall
- Left side: weight racks
- Right side: storage compartment
- (4) 4" Double hooks
- (10) J-Hooks

OPTIONS:

- TSFO-FHD**
- Flush mount handles on doors
- TSFO-FHLD**
- Flush mount handles on large doors



Front with options

Back

SR-009

- 36"W x 36"D x 73"H
- Front: doors with (2) Shelves & (2) 10" drawers
- Back: weight racks
- Sides: slatwall
- (4) 4" Double hooks
- (10) J-Hooks

OPTIONS:

- SR-WK3 - Weight Kit 3**
- (2) 1-10 lbs. Dumbbell sets
- (1) 16 pc. Hugger weight set
- (1) 5 Rep. resistance band set
- (1) 1-3 lbs. Weight bar set
- SR-MI-009 - Mirror**
- 26.5"W x 65.5"H (back side)
- TSFO-FHDR**
- Flush mount handles on drawers
- TSFO-FHLD**
- Flush mount handles on large doors



Front

SR-010

- 72"W x 25.5"D x 33"H
- Front: (2) sliding doors
- Back & sides: solid

OPTIONS:

- TSFO-FHD**
- Flush mount handles on doors



Front

SR-011

- 50"W x 24"D x 65"H
- (4) Cubbies
- (4) Double hooks in each compartment
- (2) Drawers
- (4) 4" Casters

OPTIONS:

- TSFO-FHDR**
- Flush mount handles on drawers



Front

SR-012

- 48"W x 20"D x 64"H
- (4) Cubbies
- (4) Double hooks in each compartment
- (2) Drawers
- 4" Toe-kick

OPTIONS:

- TSFO-FHDR**
- Flush mount handles on drawers



Front

SR-013

- 26"W x 24"D x 65"H
- (2) Cubbies
- (4) Double hooks in each compartment
- (1) Drawer
- (4) 4" Casters

OPTIONS:

- TSFO-FHDR**
- Flush mount handles on drawers



Front

SR-014

- 24"W x 20"D x 64"H
- (2) Cubbies
- (4) Double hooks in each compartment
- (1) Drawer
- 4" Toe-kick

OPTIONS:

- TSFO-FHDR**
- Flush mount handles on drawers



Front

SR-015

- 34.5"L x 22.5"W x 36"H
- (4) 4" Heavy duty casters
- Solid wood
- Top tray
- Open storage on lower shelf

Stor-Edge™ Medical Cabinets

Our fully modular, cost effective Stor-Edge™ Medical Cabinet line is functional, sturdy, aesthetically pleasing and designed for multiple applications. All cabinets are handcrafted in the US and are available in several wood or laminate choices. Choose to apply custom branding to carry your brand throughout your treatment area.

 BUILD PRODUCT

Visit the Build Your Product tool on our website to customize your table!



WALL CABINET STANDARD FEATURES:

- Available in wood or laminate finishes
- 1 Adjustable shelf in each cabinet
- 110° Euro hinges on doors
- Black wire pull handles
- Right or left hinges available on single door cabinets
- Mounting hardware not supplied



SEMCW-003

BASE CABINET STANDARD FEATURES:

- Available in wood or laminate finishes
- 1 Adjustable shelf in each doored cabinet (Not available in sink cabinet)
- 110° Euro hinges on doors
- Full extension drawers glides
- Black wire pull handles
- Right or left hinges available on single door cabinets
- High pressure laminate countertop backsplash
- Black toe-kick plate
- Some assembly required (Backsplash ships not attached)



SEMCB-003

SEMCB-003-ID



Wall Cabinets, Base Cabinets and Cabinet Groupings Available.

MEDICAL WALL CABINETS - 24"H CONFIGURATIONS:

SEMCW-001:

- 18"W x 12"D x 24"H
- (1) Adjustable Shelf
- (1) Hinged Door

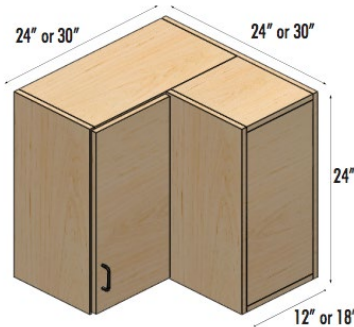


SEMCW-009:

- 18"W x 18"D x 24"H
- (1) Adjustable Shelf
- (1) Hinged Door

SEMCW-004:

- 24"W x 12"D x 24"H
- "L" Corner Unit
- (1) Adjustable Shelf
- (1) Hinged Door

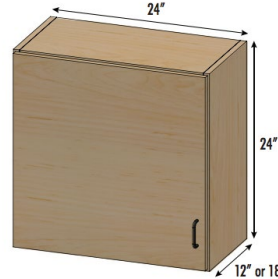


SEMCW-012:

- 30"W x 18"D x 24"H
- "L" Corner Unit
- (1) Adjustable Shelf
- (1) Hinged Door

SEMCW-002:

- 24"W x 12"D x 24"H
- (1) Adjustable Shelf
- (1) Hinged Door

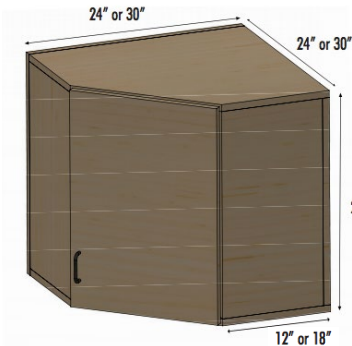


SEMCW-010:

- 24"W x 18"D x 24"H
- (1) Adjustable Shelf
- (1) Hinged Door

SEMCW-017:

- 24"W x 12"D x 24"H
- Corner Unit
- (1) Adjustable Shelf
- (1) Hinged Door

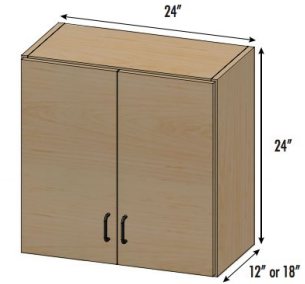


SEMCW-019:

- 30"W x 18"D x 24"H
- Corner Unit
- (1) Adjustable Shelf
- (1) Hinged Door

SEMCW-003:

- 24"W x 12"D x 24"H
- (1) Adjustable Shelf
- (2) Hinged Doors



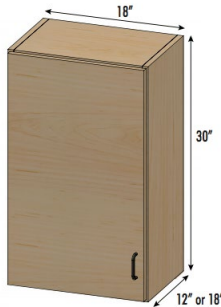
SEMCW-011:

- 24"W x 18"D x 24"H
- (1) Adjustable Shelf
- (2) Hinged Doors

30"H CONFIGURATIONS:

SEMCW-005:

- 18"W x 12"D x 30"H
- (1) Adjustable Shelf
- (1) Hinged Door

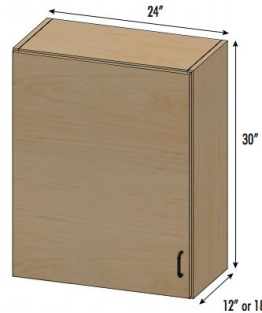


SEMCW-013:

- 18"W x 18"D x 30"H
- (1) Adjustable Shelf
- (1) Hinged Door

SEMCW-006:

- 24"W x 12"D x 30"H
- (1) Adjustable Shelf
- (1) Hinged Door

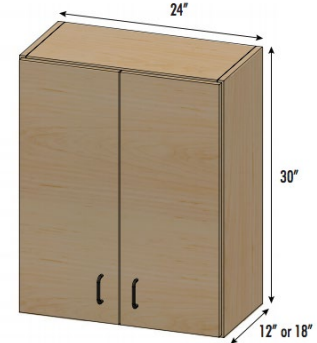


SEMCW-014:

- 24"W x 18"D x 30"H
- (1) Adjustable Shelf
- (1) Hinged Door

SEMCW-007:

- 24"W x 12"D x 30"H
- (1) Adjustable Shelf
- (2) Hinged Doors

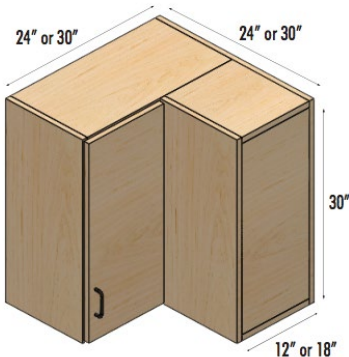


SEMCW-015:

- 24"W x 18"D x 30"H
- (1) Adjustable Shelf
- (2) Hinged Doors

SEMCW-008:

- 24"W x 12"D x 30"H
- "L" Corner Unit
- (1) Adjustable Shelf
- (1) Hinged Door

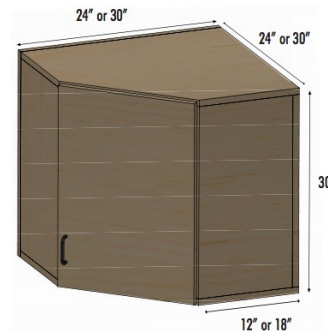


SEMCW-016:

- 30"W x 18"D x 30"H
- "L" Corner Unit
- (1) Adjustable Shelf
- (1) Hinged Door

SEMCW-018:

- 24"W x 12"D x 30"H
- Corner Unit
- (1) Adjustable Shelf
- (1) Hinged Door



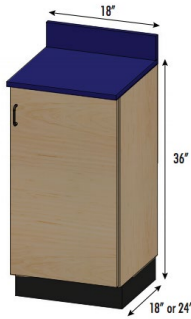
SEMCW-020:

- 30"W x 18"D x 30"H
- Corner Unit
- (1) Adjustable Shelf
- (1) Hinged Door

MEDICAL BASE CABINETS:

SEMCB-001:

- 18"W x 18"D x 36"H
- (1) Adjustable Shelf
- (1) Hinged Door

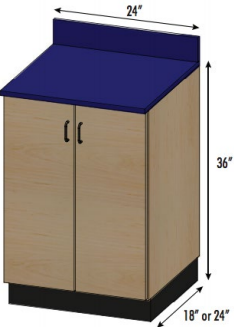


SEMCB-002:

- 18"W x 24"D x 36"H
- (1) Adjustable Shelf
- (1) Hinged Door

SEMCB-003:

- 24"W x 18"D x 36"H
- (1) Adjustable Shelf
- (2) Hinged Doors



SEMCB-004:

- 24"W x 24"D x 36"H
- (1) Adjustable Shelf
- (2) Hinged Doors



SEMCB-004-Sink:

- 24"W x 24"D x 36"H
- (2) Hinged Doors
- Sink Kit (Assembly Required)

SEMCB-021:

- 30"W x 18"D x 36"H
- Corner Unit
- (1) Adjustable Shelf
- (1) Hinged Door



SEMCB-022:

- 36"W x 24"D x 36"H
- Corner Unit
- (1) Adjustable Shelf
- (1) Hinged Door

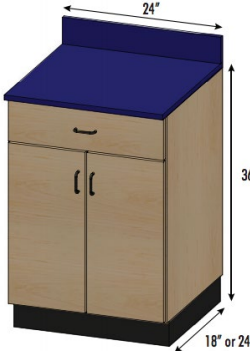
SEMCB-001-1D:

- 18"W x 18"D x 36"H
- (1) Adjustable Shelf
- (1) Hinged Door
- (1) 5.5" Drawer



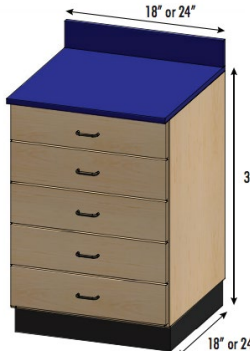
SEMCB-002-1D:

- 18"W x 24"D x 36"H
- (1) Adjustable Shelf
- (1) Hinged Door
- (1) 5.5" Drawer



SEMCB-003-1D:

- 24"W x 18"D x 36"H
- (1) Adjustable Shelf
- (2) Hinged Doors
- (1) 5.5" Drawer



SEMCB-001-5D:

- 18"W x 18"D x 36"H
- (5) 6" Drawers

SEMCB-002-5D:

- 18"W x 24"D x 36"H
- (5) 6" Drawers

SEMCB-003-5D:

- 24"W x 18"D x 36"H
- (5) 6" Drawers

SEMCB-004-5D:

- 24"W x 24"D x 36"H
- (5) 6" Drawers

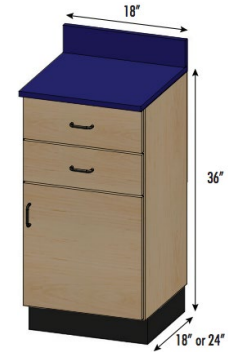


CONTINUOUS RUN OPTIONS:

- Continuous countertop
- Continuous toe-kick

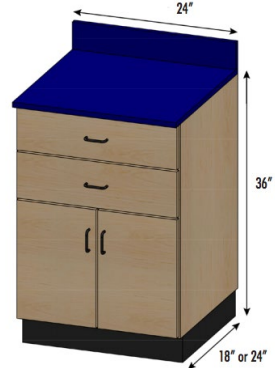
SEMCB-001-2D:

- 18"W x 18"D x 36"H
- (1) Adjustable Shelf
- (1) Hinged Door
- (2) 5.5" Drawers



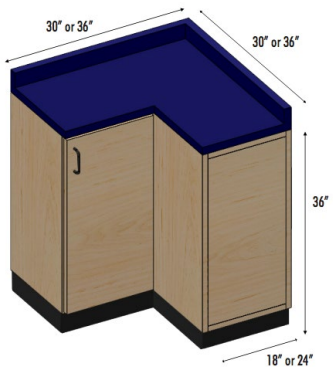
SEMCB-002-2D:

- 18"W x 24"D x 36"H
- (1) Adjustable Shelf
- (1) Hinged Door
- (2) 5.5" Drawers



SEMCB-003-2D:

- 24"W x 18"D x 36"H
- (1) Adjustable Shelf
- (2) Hinged Doors
- (2) 5.5" Drawers



SEMCB-004-2D:

- 24"W x 24"D x 36"H
- (1) Adjustable Shelf
- (2) Hinged Doors
- (2) 5.5" Drawers

SEMCB-005:

- 30"W x 18"D x 36"H
- "L" Corner Unit
- (1) Adjustable Shelf
- (1) Hinged Door

SEMCB-008:

- 36"W x 24"D x 36"H
- "L" Corner Unit
- (1) Adjustable Shelf
- (1) Hinged Door

Countertop Colors

9 standard countertop colors for athletic training room equipment

	Brittany Blue		Royal Blue		Navy
	Red		Burgundy		Hunter Green
	Slate Grey		North Sea Grey		Black

Aluma Elite Wall & Base Cabinets

Aluma Elite cabinets are functional, durable and are handcrafted in the USA. Our wall cabinets are designed for use with base cabinets and can be configured for function and style with a continuous countertop design for ease of use and cleaning. Apply custom branding for a cohesive look and feel to your treatment space.

WALL CABINETS

STANDARD FEATURES:

- 30"W x 18"D x 30.5"H
- (1) Adjustable shelf for each cabinet
- Graphics package includes: custom graphic on one door
- Durable aluminum construction
- Double doors
- Tough powder coat finish
- Door key locks



BASE CABINETS

STANDARD FEATURES:

- 30"W x 24"D x 36.5"H
- 3 cabinet configurations available
- (1) Adjustable shelf in each doored cabinet
- Graphics package includes: custom graphic on one door or drawer
- Durable aluminum construction
- Drawer/door key locks
- Top ships separately
- Tough powder coat finish
- Leveling feet
- Continuous run countertop



Pair multiple cabinets together or ask about custom-built options for a fully functional treatment space.



WTU-101



WTP-101

Stor-Edge Whirlpool Table

Solid, well-built whirlpool tables provide ease for practitioner and patient when administering hydrotherapy. Our Stor-Edge™ whirlpool tables feature a solid hardwood frame, marine grade fasteners, adjustable glider feet on legs. Available in a single or double option built to fit your specific whirlpool brand.

STANDARD FEATURES:

- **Load Capacity:** 400 lbs.
- Single: 55"W x 44"L x 32"H
- Double: 85"W x 36"L x 32"H
- Solid hardwood frame
- Marine grade fasteners
- Adjustable glider feet on legs



A4119



A4120

Aluma Elite Whirlpool Table

The Aluma Elite Whirlpool Table is built to handle the harshest environments. This table is fabricated with a rugged aluminum frame that maintains its structure and integrity, while the whirlpool table top and seats are made of a durable phenolic material that holds up in wet environments. Our whirlpool tables come standard with a shelf for added storage capabilities and are available in single or double tub configurations. Custom graphics are included on both ends of the table.

STANDARD FEATURES:

- **Load Capacity:** 600 lbs.
- Single: 46"W x 38.25"D x 31 or 34"H
- Double: 80.5"W x 38.25"D x 31 or 34"H
- Durable aluminum construction
- Tough powder coat finish
- Rugged phenolic top
- Storage shelf
- Graphics package includes: custom graphics on the 2 ends of the table

Available in Single, Double and Custom Configurations





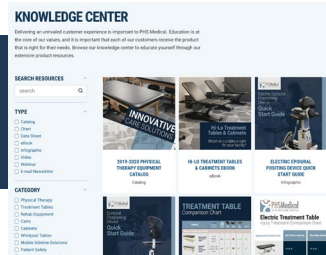
Build Your Brand.

Request your FREE mockup:
800.743.7738
phsmedicalsolutions.com



VISIT THE KNOWLEDGE CENTER on our new website

Education is at the core of our values, and it is important that each of our customers receive the product that is right for their needs. Browse our knowledge center to educate yourself through our extensive product resources.



FMST Tools

Our Fluid Motion Soft Tissue Tools combine just two tools to effectively and gently manipulate tissue over all surfaces of the body, reducing scarring, controlling pain and improving joint and muscle flexibility. For practitioners, they're also easy to use. Our custom-molded non-slip thumb grip makes our tools easy to grasp and hold, even with slippery creams. An ambidextrous design means that every single edge on our tools can be used for better compatibility of treatment on multiple body areas. Our larger tool can be applied to broad areas of the body, while our smaller tool is designed for more delicate areas such as the hands, feet, and neck.

STANDARD FEATURES:

- Custom molded non-slip thumb grip to create maximum angular pressure without over use by the practitioner
- **Ambidextrous Design:** No more switching through multiple tools to find the right edge or angle. Both tools are designed to be used on both sides and on every surface for increased compatibility of treatment on multiple body areas.

F1: 10"L x 3.5"W F2: 5.25"L x 3.25"W



2 tools designed to treat
all areas of the body

NEW

Logo Rugs



Logo Rugs add the perfect finishing touch to any indoor facility. The rug is constructed with static dissipative 100% nylon carpet bonded to 100% premium rubber for superior grease and oil resistance for years of worry-free service.

STANDARD FEATURES:

- Indoor applications only
- Permanently printed, plush nylon surface
- 100% Nitrile rubber backing for slip/skid resistance
- Fully launderable
- Choose from 150 colors (up to 25 colors per rug)

Smart Step Wellness Mats



Our line of high-performance Wellness Mats deliver the comfortable support you need to help while you work, play or exercise. Each mat features extra-durable construction, non-slip tops and bottoms, and an easy-to-clean, antimicrobial surface.

STANDARD FEATURES:

- Unmatched Comfort and Support
- Gradual Edges Will Never Curl
- 99.99% Anti-Microbial
- Non-Slip Top and Bottom Surfaces
- Will Not Separate, Bubble, or Delaminate
- Perfected and Tested for Over 10 Years
- ¾" SmartTech™ Polyurethane Technology
- 10-Year Manufacturer's Warranty
- Proudly Made in the USA



NEW!
Medical Rolling Stool

Rolling Stools

Our Rolling Stools combine comfort with control thanks to a 3" deluxe seat cushion, a five-star base (plastic or metal) with heavy-duty casters and pneumatic controls twith multiple seat height adjustments. Give your stool the EDGE with custom branding.

 **CUSTOMIZE PRODUCT**

Visit the Build Your Product tool on our website to customize your stool!

STANDARD FEATURES:

- **Load Capacity:** 300 lbs.
- 16"W x 16"D x 18-23"H
(20-26"H on Medical Rolling Stool)
- Padded vinyl seat
- 3" deluxe foam cushion
- Heavy duty casters
- Swivel stool

NEW



- Round
- 3/4 Round
- Table Pillow
- Rectangular
- Sloped Positioning
- Wedge
- Twin Wedge
- Crescent

Bolsters

Whatever your patient's needs are, PHS Medical has a comfortable and practical bolster to get the job done with minimal interruption to your patient. Our bolsters are durable, easy-to-clean, and available in a variety of color options. Each bolster is a multi-purpose product that can be used to position ankles, knees, or neck. Our bolsters are hand upholstered and custom produced. Available in multiple sizes, PHS Medical's bolsters are ideal for providing comfortable support for your patient.

STANDARD FEATURES:

- Made from high density foam and durable vinyl
- Zipper closure
- Bolster pillows provide support for ankles, knees, and neck
- Available in multiple sizes and colors



Crescent Bolster
(BOL 1912C)

19.75"L x
12.5"W x 8.5"H



Table Pillow Bolsters
(BOL 1212T)

12"L x 12"W
x 3"H



Twin Wedge Bolsters
(BOL 2020TW)

20"L x 20"W
x 10"H (Set
of Two)

Desktop Laser System

Built for the busy clinic, our Apollo Desktop Laser Unit offers both convenience and power. You can customize your unit with a variety of powerful probes for deep tissue or more delicate treatment. This desktop unit features a user-friendly LCD display with probe status and treatment times.

STANDARD FEATURES:

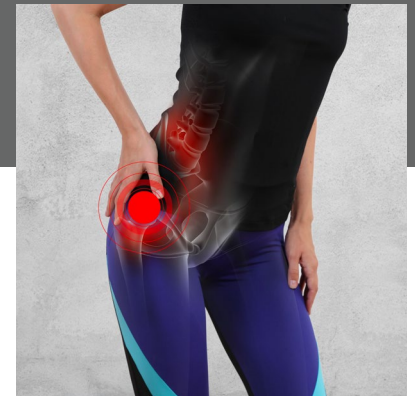
- 9"W x 11.25"D x 4.5"H
- 2 Channel desktop unit with choice of probe
- Heavy-duty construction for clinic environments
- Elevated face for easy viewing and control
- Two timers - treat 2 patients at the same time
- Probe holders on both sides of the unit that can accommodate two probes and both right and left handed practitioners



AP2-DT-5000-C

FEATURED BLOG: COLD LASER VS. ULTRASOUND

Both ultrasound and cold laser are treatment modalities commonly used in physical therapy, sports medicine, chiropractic and beyond. They are both used to provide a therapeutic effect on tissues of the body. Generally, they are used to ease pain, reduce inflammation, break down scar tissue and more.



Ultrasound

Ultrasound uses high-frequency sound waves through vibration to transmit thermal effects through the body's tissues. To avoid the risk of burns to the underlying tissue, the treatment head is kept in motion throughout the treatment. According to Dr. Turchin, M.A., D.C., because ultrasound is a form of heat therapy, it does not regenerate tissue or block pain like a cold laser can. It can soften tight connective tissues, but does not promote healing.

Laser Therapy

Cold laser (low level laser) is a non-invasive treatment which uses a non-thermal infrared light to reduce inflammation, increase joint mobility, stimulate healing and decrease both short and long term pain. Cold laser is used extensively for injury, pain management and musculoskeletal problems.

Low level laser therapy is used to treat a range of pathologies including:

- | | | |
|------------------------|-----------------------------|--------------------------|
| • Arthritis | • Soft tissue injuries | • All types of trauma |
| • Wounds and fractures | • Chronic and acute pain | • Depression and anxiety |
| • Nerve problems | • Side effects chemotherapy | |

One of the biggest differences between cold laser and ultrasound therapy is that ultrasound creates heat and cold laser does not. Because of this, ultrasound has more limits and contradictions of how it can be used. Cold laser (low level laser) therapy is fast, painless and more effective for long-term results on injuries and conditions than ultrasound.

EPD *Epidural Positioning Device*

Patented in 2001, our Epidural Positioning Device is a landmark device designed by an anesthesiologist that positions patients correctly and comfortably by encouraging cervical, thoracic and lumbar flexion while maintaining a solid and stable position. Manually controlled chest, arm and head support ensures that patients of every body type and size can be accommodated and the back remains immobile during epidural placement. The EPD is suitable for use in operating rooms, labor and delivery suites, pain centers or anywhere epidural and spinals are performed.

STANDARD FEATURES:

- Load Capacity: For use with patients up to 600 lbs.
- 20.5"W x 30"D x 50-60"H
- White powder coat base
- 180° Adjustable face rest
- 6 Position adjustable arm rest
- Arm rest size: 16.5"W x 10"D
- Arm rest adjustment: 32-43" from the floor
- Interchangeable torso cushions (1 flat and 1 elevated)
- Torso cushion size: 8"W x 8"H
- Torso cushion adjustment: 5.5-10"
- Includes 1 Box (50) Sani-Cover® Fitted Disposable Face Rest Covers

E-EPD *Electric Epidural Positioning Device*

Based on a design by an anesthesiologist, the E-EPD positions patients correctly and comfortably by encouraging cervical, thoracic and lumbar flexion while maintaining a solid and stable position. A new curved design, for use with patients up to 600 lbs., accommodates patients of a variety of body sizes and weights. Electronic controls adjust the E-EPD to the correct height and foot position for each patient, while the easy mechanical lock and release system makes chest, arm and head adjustments quick and effortless.

STANDARD FEATURES:

- Load Capacity: For use with patients up to 600 lbs.
- 28"W x 29"D x 50-60"H
- White powder coat base
- 180° Adjustable face rest
- Prepositional pillow for use during cervical, lumbar and thoracic placement
- Adjustable arm rest
- Arm rest size: 21"W x 15.5"D
- Arm rest adjustment: 6"
- Adjustable torso support
- Torso cushion size: 6.25"W x 5.75"H
- Torso cushion adjustment: 6"
- Single hand control adjusts both midsection and foot rest
- (2) Rechargeable batteries last up to 100 cycles each
- Adjustable foot rest
- Medical grade profile locking casters
- Black upholstery
- Includes 1 Box (50) Sani-Cover® Fitted Disposable Face Rest Covers



EPD
(Epidural Positioning Device)



FRC 30-50



E-EPD
(Electric Epidural Positioning Device)

PATENT PENDING

DID YOU KNOW

that PHS Medical is a brand of Pivotal Health Solutions?



CREATE YOUR PIVOTAL PRACTICE

We are continuously developing and improving products so we can deliver unmatched value to our customers in both product and service. It's our priority to be the difference in providing **innovative care solutions**.

QUALITY

A lot of thought is put into each and every one of our products. Our engineers design our products to meet the ergonomic needs of clinicians and the comfort requirements of clients. Our skilled craftsmen and women build these products from materials that are meant to withstand the conditions that physical therapy requires. Our products are continually being updated to adapt to new needs and better serve the physical therapy community.

INTEGRITY

We are proud of our hard work and stand behind it in an honest and respectable manner by being open and ethical from all angles. We strive to be thorough in the entire purchasing process. If there is ever an issue or misunderstanding, we will work together to go above and beyond to make sure it is resolved and taken care of.



Be the Difference.
pivotalhealthsolutions.com

NEW!

rev.247

WORKSPACE REINVENTED



NOW AVAILABLE

The world of work is changing.

Our mission hasn't. Our focus is on the way you work best, and we provide the resources you need to get work done. We created REV.247 to provide innovative products and solutions to help reinvent your workspace.

- Elevating Desks
- Office Chairs
- Filing Cabinets
- Stationary Tables
- Mobile Workstations





BUILD YOUR BRAND WITH CUSTOM GRAPHICS

Decals, banners, signs and much more! Let our experienced design team bring your project to life. At Pivotal Printing, we utilize state-of-the-art printers for your creations large and small including wall graphics, door wraps and all types of signage with custom branding options.

- Decals
- Bag Tags
- Window Decals
- Retractable Banners
- Tri-Stand Banners
- Scrim Banners
- Foamboards and Stands
- Paper Posters and Banners
- Floor Decals
- Polymetal Signs
- Vehicle Magnets
- Bean Bag Boards
- Wood Prints
- Variable Height Banners and Stands
- Wall Decals
- Nameplates
- Door Wraps
- Corroplast Yard Signs with Stakes
- Canvas Prints
- Customized whiteboards



COLORS & BRANDING



Logo Slip Cover

(LOGO COVER) The logo slip cover is a cost effective, removable cover that slips over the lift back/tilt cushion of your table, cabinet, or taping station. Logo slip covers are also easy to replace if your school or organization updates logos or colors.



Debossed Logo

(LOGO DB) The debossed logo is a popular branding option that creates a classic look in any space. There is a one time fee for the metal die used to deboss the logo, which can be used on future Athletic Edge equipment orders.

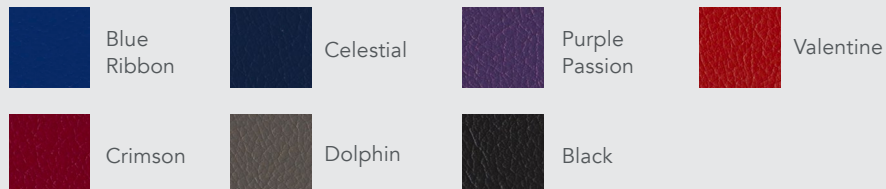


Color Edge Print Logo

(LOGO CP) The Color Edge Print logo is printed directly onto your upholstered cushion, and there are no limits on the number of colors printed in your logo.

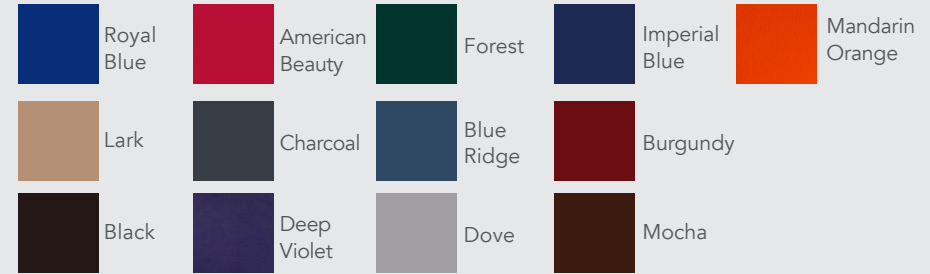
Color Edge Print Upholstery Colors

7 standard upholstery colors for athletic training room equipment.



Upholstery Colors

13 standard upholstery colors for athletic training room equipment.



Laminate, Wood & Stain

8 standard laminate, 2 standard wood, and 7 standard stain options for athletic training room equipment.

Laminate:



Wood:



Custom Stain:



Powder Coat Colors

15 available powder coat colors for all LAST tables, Thera-P tables, SmartCarts and Aluma Elite equipment.





William J. Hybl Sports Medicine And Performance Center

Q&A With Craig Elder | Sports Medicine Coordinator

The William J. Hybl Sports Medicine and Performance Center was created based on a multi-disciplinary and highly collaborative approach between the University of Colorado at Colorado Springs and Centura Health to help athletes perform better and recover faster.

Because this project lends such a unique, multi-disciplinary approach to human health and performance, we asked how the Center plans to utilize the equipment and products purchased from PHS Medical for performance, recovery, education and research.

Positioning & Great Performance

Our clinicians love the Hi-Lo option and the multiple supported positions, which minimize the need for bolsters. The arm drop away feature is especially nice, allowing the athlete to stay positioned on the center of the table while treating either shoulder.



Versatility & Function

We picked the classroom tables because they had the ability to convert from a desktop to a treatment table top. We also liked having cubbies for students to store items in while using them as a treatment table.





phsmedicalsolutions.com
800.743.7738



OUR
BRANDS:

