

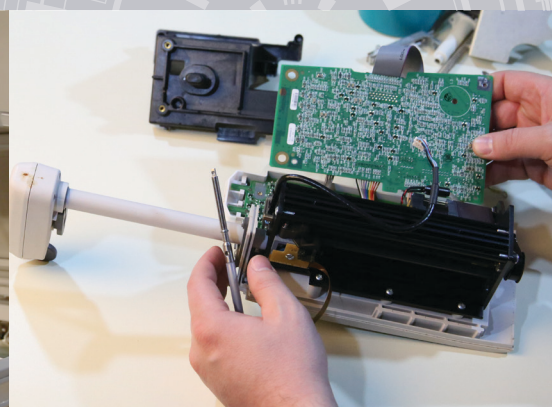


**CENTURION**  
**SERVICE GROUP**  
A TRIMEDX COMPANY

# MEDICAL EQUIPMENT YOU CAN TRUST.

New and Certified Pre-Owned

**CENTURION**  
**DIRECT**



Anesthesia



ENT



Microscopes



Radiology



Cardiology



Exam



Miscellaneous



Respiratory



Carts



Furniture/  
Patient Room



Obstetrics



Stainless Steel



Central Sterile



Hospital Beds



Patient Monitoring



Stretchers



Defibrillators



Infusion



Patient Warming



Surgery/  
Operating Room



Ultrasound



Urology

# THE CENTURION DIFFERENCE

Save thousands without sacrificing quality or visual aesthetics. As a leading supplier of certified pre-owned medical equipment, we have a seamless process for medical procurement professionals, massive inventory levels, with a balance of quality and pricing that cannot be beaten.



Don't see an item you're looking for? Please call us at 708-761-6655 and let us source it for you.

## Biomed Inspection

Our certified technicians inspect, test and return medical equipment to OEM specifications.

## Cleaning, Disassembly & Repair

We disassemble each product, thoroughly clean and disinfect, and replace worn or broken parts.

## Reassembly and Finishing

We professionally refinish our products in industrial paint booths using automotive-grade paints and spray guns for quality that you can see and feel.

## After Sale Service

Whether you are purchasing one piece of equipment or outfitting a complete facility, we are your partner in the process, including after sale services:

- Parts and labor warranty on all equipment
- Extended warranties available on select items



**stryker**

**Dräger**

**WelchAllyn**

**Baxter**



**MAQUET**

**PHILIPS**

**mindray**

**ZOLL**

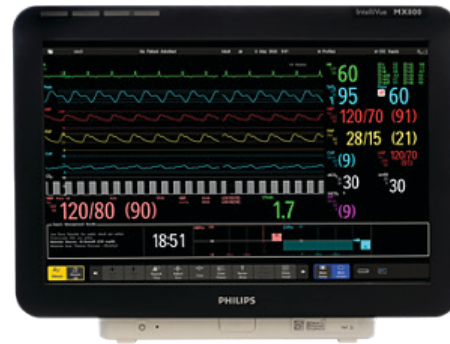






## Philips IntelliVue MX800

The IntelliVue MX800 is Philips first patient care solution to incorporate patient monitoring and clinical informatics. Designed to simplify access to patient information you need to enhance diagnostic confidence throughout the hospital.



### Mindray Passport 8

8" high resolution touchscreen display. Up to 7 waveforms. Standard features include 3 or 5-lead ECG, Masimo SET® SpO2, NIBP, respiration, temperature, integrated recorder.

Optional Nellcor® OxiMax® SpO2 available



### Mindray Passport 12

12" high resolution touchscreen display. Up to 8 waveforms standard. Standard features include 3 or 5-lead ECG, Masimo SET® SpO2, 2 IBP, NIBP, respiration, temperature, integrated recorder.

Optional Nellcor® OxiMax® SpO2 available



### Mindray Datascope Passport 2 Monitor

Dedicated function keys. Colorful waveforms with automatic display configuration. Standard features include six waveforms, large numerics, 3 or 5-lead ECG, lead-selectable respiration, non-invasive blood pressure, temperature, and Masimo SpO2.



### Mindray Datascope DPM6

Multi-vector Arrhythmia and ST analysis, Cardiac Output (CO), Continuous Cardiac Output (CCO/SVO2), CO2, up to 8 invasive blood pressures, 5-agent multi-gas analysis with auto-ID and data storage. 12.1" touch-screen display, and quick-access menus.



### Welch Allyn Spot LXI Vital Signs Monitor

SureBP measures blood pressure in about 15 seconds. SureTemp Plus Thermometer or Braun ThermoScan PRO 4000 Ear Thermometer. Masimo or Nellcor Pulse Oximetry. Bigger, brighter LCD display. Integrated long-life battery.



### GE Carescape V100 Vital Signs Monitor

Low-acuity patient monitor that supports you in making fast, quality care decisions. Reliable, easy-to-use vital sign monitor that helps you care for many patients efficiently. Its speed, accuracy and mobility allow you to collect the right information.



### GE Healthcare Corometrics 170 Series

Designed to provide the information you need to make quick, accurate and cost-effective clinical assessments. These compact and lightweight monitors are designed for ante- and intrapartum applications in the office and hospital.



### GE Datex-Ohmeda CardiCap/5 Monitor

Comprehensive vital signs monitoring capabilities for all anesthesia monitoring locations throughout the perioperative environment. Compact size and frame integrated mounting piece allows quick and easy mounting.



### GE Dash 3000 Monitor

8.4" Display. Easy-to-use interface and color-coded patient cables/connectors. Standard Monitor features NIBP, RESP, SpO2, Temp, and ECG. Optional CO2 and IBP monitoring available. Dash Monitors are lightweight, durable and ergonomic.



### GE Dash 4000 Monitor

10.4" large-format, full-color active matrix display provides convenient viewing from a distance. Easy-to-use interface and color-coded patient cables/connectors. Standard Monitor features NIBP, RESP, SpO2, Temp, and ECG. Optional CO2 and IBP monitoring available.



### GE Dash 5000 Monitor

12.1" large-format, full-color active matrix display provides convenient viewing from a distance. Easy-to-use interface and color-coded patient cables/connectors. Standard Monitor features NIBP, RESP, SpO2, Temp, and ECG. Optional CO2 and IBP monitoring available.



## GE MAC 5500 HD EKG

Built on GE innovation in EKG acquisition and analysis, the MAC 5500 HD Resting EKG System is a premier EKG system, delivering advanced disease management capabilities through one of the industry-leading collections of algorithms and advanced networking. Sophisticated tools. Easy to use. The MAC 5500 HD enables clinicians to focus on what's most important: their patients.

The MAC 5500 HD represents a new definition of EKG speed and accuracy.



### GE MAC 1200 Diagnostic EKG

Compact, comprehensive solution with practical features that clinicians at smaller hospitals, clinics and physician offices will appreciate. Designed for acquisition with or without analysis, the system can be configured as a standard electrocardiograph without analysis for facilities with minimal EKG requirements.



### GE MAC 5500 EKG

15 lead analysis with interpretation (12 SL EKG analysis program with Gender Specific Software). The information is displayed on a 10.4" backlit color AM-LCD display. Has the ability to provide full page printouts. With a single button for operating it can print, store and transmit data almost instantly. Optional barcode scanner.



### Burdick Atria 3100

Compact yet powerful, giving doctors high quality and accuracy while giving protocol choices, thereby helping eliminate transcription errors and improving workflow. Automatic, manual, or 12-lead rhythm operation for maximum flexibility. Easy to use keyboard and menu driven interface. Optional, powerful interpretation algorithm based on five clinically significant criteria, as well as pediatric analysis and pacemaker enhancement. Communication options including both wired Ethernet and wireless 802.11 provide cutting edge.



### Schiller Cardiovit AT-2 Plus

Alphanumeric keyboard 6/12 channel representation of all 12 simultaneously acquired leads. Large, high resolution backlit monitor for easy preview of EKG quality. Automatic and manual mode. Full size 8 1/2" x 11" reports (A4). Integrated rechargeable battery lasts up to 3 hours or normal use. Single button operation program including accurate measurements (optional). RS-232 interface for data transmission to PC SEMA-200.





## Physio-Control, Inc. Lifepak 20e Defibrillator

The 20e meets all your defibrillator/monitor needs in a compact, affordable package. Designed specifically for crash cart use, it is simple yet powerful, and ready when you are. With features like capnography, a CPR metronome, and the ability to remotely send data to CODE-STAT™ data review, the LIFEPAK 20e defibrillator/monitor with CodeManagement Module helps your hospital meet the demands of performance improvement and better prepare for tomorrow's emergencies.



### Zoll E Series Defibrillator

Rugged and ready defibrillator intended for use by EMS personnel. ZOLL's Rectilinear Biphasic™ waveform (RBW) was designed specifically for external defibrillation to control for variations in patient impedance. Only the ZOLL RBW has demonstrated statistical clinical superiority to monophasic waveforms in peer reviewed randomized controlled trials.



### Zoll R Series Defibrillator

Truly two devices in one. To meet the needs of BLS-trained responders, it powers on as an AED. But with the push of a button, it converts to a full-featured manual defibrillator for ALS responders. Using standard wireless technology, it can automatically relay this information to be viewed on a PC or mobile device.



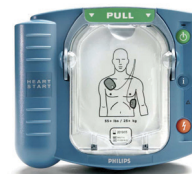
### Zoll AED Plus Defibrillator

When it comes to helping a victim of sudden cardiac arrest, not all AEDs are created equal. Unlike other AEDs, ZOLL® AEDs support rescuers with integrated, real-time feedback on compression rate and depth. Recommended by medical professionals, the ZOLL AED Plus® defibrillator with Real CPR Help® technology guides rescuers in performing high-quality CPR and provides integrated audio and visual feedback to support you throughout the rescue.



### Zoll X Series Defibrillator

Real CPR Help® technology to nearly triple the odds of your patients surviving cardiac arrest. Open 12-lead capabilities to reduce time-to-balloon by interfacing with all leading ECG management and STEMI systems. Integrated WiFi.



### Philips HeartStart AED

The Philips HeartStart OnSite AED is designed for the ordinary person in the extraordinary moment. It is easy to set-up and includes automatic Life Guidance features like voice prompts and CPR coaching to help guide you through the treatment of sudden cardiac arrest.



### Zoll AED3 Defibrillator

Features Enhanced Real CPR Help. The CPR Dashboard displays the actual depth and rate of compressions numerically, along with elapsed time, CPR cycle count, shocks delivered, and EKG. The Integrated Pediatric Rescue on the ZOLL AED 3 makes pediatric rescue simple with the CPR Uni-padz III (or the Pedi-padz II for the BLS model) electrodes and a child mode button which configures the AED's algorithm and delivers pediatric-appropriate treatment without the use of an attenuator.



### Physio-Control Lifepak 15 Defibrillator

ADAPTIV Biphasic Waveform/Therapy. External Pacing Option. Detailed 8.4" Color LCD Display. CPR Metronome. 3-Lead ECG Monitoring and 3-Lead ECG Cable. Two Pairs of QUIK-COMBO Electrodes. 100mm Printer w/Two Rolls of Printer Paper. Bluetooth Technology.



## Alaris Medley Infusion System

The BD Alaris™ Pump module is a large volume infusion pump that helps continuously or intermittently deliver fluids, medications, blood and blood products to adult, pediatric or neonatal patients. Clinicians can attach up to four IV infusion modules, allowing four independent infusions on a single PC unit.

Select your PC module, then select the infusion pump or module that best meets your needs.



### Alaris Medley 8015 PC Module Color Display

Modular smart IV medication safety system that can help protect every infusion to guard you and your patients from medication errors. The Alaris Medley Point of Care System combines a single point-of-care unit featuring Guardrails Suite MX safety software with IV/LVP, PCA Syringe, Syringe, respiratory monitoring (SpO2 and EtCO2), and barcoding capabilities.

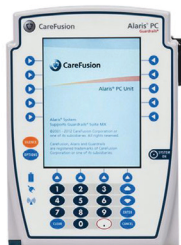


### Alaris Medley 8100 Infusion IV Pump Module

Drug Calculation allows entry of drug dose and flow rate. Downstream Occlusion Detection system. KVO Rate Adjust.

Flow Rate Range: 0.1-99.9 ml/hr in 0.1 ml increments  
100-999 ml/hr in 1 ml increments

Rate Accuracy:  $\pm 5\%$  at rates between 1 and 999 ml/hr  
 $\pm 5.5\%$  at rates less than 1 ml/h



### Alaris Medley 8015 LS Next Gen PC Module Color Display

Provides a common user interface for programming infusions and continuous SP02/ EtCO2 monitoring. This helps to reduce complexity at the point of care. Each Alaris Medley 8015 LS PC Module features a larger display and can support up to four Infusion Modules with a single power cord. The 8015 LS Module features a large, easy to read color display, and back-lit keypad for programming values. Programming screen displays drug or IV fluid name, dose or rate and volume infused. Real time battery gauge display lets clinicians know the amount of run time available for their current infusions. Alaris Medley 8015 LS Next Generation PC Modules are Guardrails compatible, and Educational customers have the option of having an Educational Training Dataset added for training purposes.



### Alaris Medley 8110 Syringe Pump Module

Common user interface—same front panel keys as other modules Plunger drive head protected—extended handle to protect plunger.

Flow Rate Range:  $\pm 2\%$  of full scale plunger  
100-999 ml/hr in 1 ml increments



### Alaris Medley 8120 PCA Syringe Pump Module

Common user interface—same front panel keys as other modules Includes locking cabinet, keyset, and Patient Bolus Cord.

Flow Rate Range:  $\pm 2\%$  of full scale plunger  
100-999 ml/hr in 1 ml increments



### Alaris Medley 8300 EtCO2 Module

Displays trend real-time patient respiratory rate, EtCO2 and no breath alarm status. Uses Oridion Microstream technology with Filterline disposables (sold separately) to offer real time respiratory status.



## Alaris Medsystem III Triple Channel Infusion Pump

Triple Channel Infusion System in a very small package. Onboard Rechargeable NiCad Battery.



## Baxter 6301 Flo-Gard Dual Channel Infusion Pump

Dual Channel Volumetric IV. Pump. Flow Check Occlusion Alarm. Programmed delivery profiles.



## B Braun Infusomat Space Infusion Pump

Independent Modularity, Easily Stackable, KeyGuard™: Non-numeric keypad, Extensive Drug Library, Wireless Integration.



## Baxter AS50 Syringe Pump

Flow Rate Accuracy:  $\pm 3\%$  of full scale plunger travel  
Volume Accuracy:  $\pm 3\%$ , or 0.007" of travel.



## B Braun Outlook ES Series Infusion Pump

Real-time display of dose limit values during infusion for titration safety. Active alphabetic matrix.



## Baxter InfusOR Syringe Pump

Interchangeable Smart Labels. Large Easy to Read Dials. Battery life is typically 150 hours.



## B Braun Outlook Series Infusion Pump

Real time display of dose limit values during infusion for titration safety. KeyGuard™: Non-numeric keypad.



## Hospira Lifecare PCA 3 Syringe Pump

Wireless connectivity. Locking Medication Cabinet. Power Cord, Pole Clamp, Keyset, and Patient Bolus Cord Included.



## B Braun Perfusor Space Infusion Pump

Alarms are audible and color-coded for easy recognition. Syringes automatically recognized for fast set-up.



## Hospira Plum A Plus Infusion Pump

Single Channel or Triple Channel. Integral set-based, free-flow protection. PlumSet™ Administration Set with CLAVE®.



## B Braun Vista Basic Infusion Pump

DEHP-free sets protect patients. Needle-free sets protect both the patient and the clinician.



## Medfusion 3500 Syringe Pump

PharmGuard® Medication Software. FlowSentry™ monitor. Customizable drug alerts.



## Baxter/Sigma Spectrum Infusion Pump

Bright, large-type, color display. Baxter's standard Clear-Link and Clear-Flo IV administration sets. Opt Wireless.



## Curlin 6000 CMS Ambulatory IV Pump

Real-time Line Pressure Display. Highly Visible Large Fonts Titration in continuous and PCA Modes.



## Baxter 6201 Flo-Gard Infusion Pump

Single Channel Volumetric IV. Pump. Front Panel Lock-out. Flow Check Occlusion Alarm.





## Stretchers & Crib

To order, contact us at 708-761-6655 or [direct@centurionservice.com](mailto:direct@centurionservice.com)  
Items subject to availability.

### Hill-Rom Durastar P8005 Stretcher

The ideal choice for the ER, OR, PACU, Recovery, or for outpatient settings. This rugged stretcher offers outstanding mobility, comfort, and excellent quality. Accommodates virtually all patient conditions, as well as your needs in this uncertain environment.



#### Hill-Rom Transtar P8000 Stretcher

Best value and most reliability in class. 500 lb capacity and optional 700 lb capacity. Available in 26" and 30" widths. Retractable side rails with full extension bumper. High low and Trendelenburg/reverse control pedals and brake/steer pedals.



#### Hill-Rom 8050 OB/GYN Stretcher

Best value and most reliability in class. 700 lbs weight capacity. Sliding litter enables quick and easy patient positioning. Next generation Steering Plus—system for crisp cornering and control. Dual-locking, four wheels brakes for strong, stable platform.



#### Stryker Prime Series Stretchers

700 lb weight capacity. Integrated Utility Tray and thermo-formed base with extra capacity storage tray. 4 Wheel, center-locking brake system with dual end activators. Dual, side mounted foot control hydraulics with uni-lower pedal. Dual end brake/steer controls.



#### Midmark Pedigo 500 Pediatric Crib

Offers full-function capability as a pediatric transport stretcher. Over-sized five-inch casters allow for easy maneuver, reducing strain on the caregiver. Its unique 2-post support system design allows 97% access to the patient.



#### Ferno 35A Lightweight Ambulance Cot

Lightest cot available with a 500 pound (227 kg) load capacity. Foot-end lead handle and side release handle. Two loading heights. One-hand swing-down sidearms. Includes patient pad and straps.



#### Ferno PROFlexx 35X Ambulance Cot

All-metal frame with built-in shock frame. 5-position drop frame with one handed drop feature. One handed safety bail release. Telescoping side lift handles. Wider bed surface and head frame. Foot end lead handle.



#### Stryker MX Pro Ambulance Cot

Heavy-duty oversize rear wheels. X-frame design. Tough, highly visible yellow powder coating. MX-PRO's standard one-hand release. Fold down side rails. Weight Capacity: 500-650 lbs, depending on model.



#### Stryker Cub Pediatric Crib

Simple, safe design with a warm friendly appearance that cultivates a comforting environment for small children and their families. 360° access with all four siderails being lowered. 4 swing open silent access doors. Optional integrated scale. Retractable fifth wheel.



## Stryker Secure III Hospital Bed

Our S3 bed delivers intuitive, advanced technology with a focus on patient safety, caregiver safety, and ease of use. The S3 provides programs and processes that helps you to minimize the risk of never events while providing a higher quality of care. Siderails are BackSmart designed with one-hand operation and an intermediate position for patient assistance during bed entry and exit. One-touch scale allows accurate, repeatable readings with the patient or bed in any position. iBed Awareness monitors local bed status information, alerting changes to preset positions visually, audibly or remotely.



### Hill-Rom Advanta II Med-Surg Bed



The Advanta™ 2 Med-Surg Bed offers improved ease of use through innovation and proven performance. Designed to help caregivers accomplish their goals, the Advanta 2 Med-Surg Bed provides patients egress/ingress, less patient positioning, and more convenience through storage and other features.



### Hill-Rom P3200 VersaCare Bed

Bed goes into full chair position. Easy-to-grip side rails. Fixed headboard stays the same—the optimal height for pushing. Hands-free foot controls to adjust bed. Optional 3-Level Bed Exit Alarm.

### Hill-Rom Affinity IV OB/GYN Birthing Bed



Tuck away side rails for minimum transfer gap. Manual Operation and Battery Back Up System in case of power failure. Built-in foot supports adjust vertically and horizontally to position feet. Hinged seat and back sections keep mattress from bunching up.



### Hill-Rom P1600 Advanta Bed

Easy-grip siderail controls that are conveniently located in a central location where both patient and caregiver interaction naturally occurs. Four corner brake and steer system allows for easy mobility, and a hard pan mattress surface coupled with a CPR quick release function is available to allow for quick CPR positioning along with a removable headboard to assist in CPR positioning.

### Hill-Rom Care Assist ES Bed



SlideGuard® bed articulation technology with auto-contour. Integrated scale. Point-of-Care® nurse controls. One-button dining chair®. Optional Intellidrive® powered transport or central 5th steering wheel.



### Stryker Secure II Hospital Bed

Dual Pedestal design. CPR Release. In-rail Fowler/Knee Gatch control. Electronic function lock-out control. Four-wheel, steel-ring brake system with centrally-located activation pedals. Backrest angle indicator. Locking-caster wheel steering with 4 traction sockets.



## Exam Tables

To order, contact us at 708-761-6655 or [direct@centurionservice.com](mailto:direct@centurionservice.com)  
Items subject to availability.

### Midmark Ritter 204 Exam Table

Features the latest in design, comfort and functionality in a manual exam table, it truly offers efficient patient care. Midmark found that you need an exam table that allows easy access for patients and makes them feel secure. The Midmark 204 Exam Table also features smart options like three side drawers for optimal supply management, modern styling to coordinate with your office, an updated, ergonomic, comfortable top design.



#### Midmark Ritter 75L Exam Chair

Full eight-way power, essential low height, unprecedented patient comfort and a multitude of efficiency features. With a low height of 19 inches the 75L provides easy access for patients who are pregnant, elderly, or have disabilities.



#### Midmark 222 Exam Table

Power Back Rest. Dimensions: 26.5"W x 54"L (72" with footrest extended). Height Range: 18"-37". Weight Capacity: 400 lbs. Paper Roll Holder. Standard Foot Control. Power Seat Height. Pelvic Tilt



#### Midmark 223 Exam Table

Power height. Patient Weight Capacity: 400 lbs. Seat Height Adjustment: 18 to 37". Length with Footrest Extended: 76.7". Height: Minimum: 18". Maximum: 37".



#### Midmark 230 Procedure Chair

Designed to provide the flexibility needed for optimal patient positioning during a range of procedures. A power procedure chair with all the basic features you need. Powered multi-positioning capabilities.



#### Midmark 630 Procedure Chair

Motion Profiling® for more human-like movement. Active Sensing Technology® pauses chair movement when potentially harmful impact is detected. Best-in-class, 18-inch low seat height and 650-pound weight capacity.



#### Midmark 641 Oral Procedure Chair

The Oral Procedure Chair gives you unobstructed access to the patient's oral cavity. You can work more efficiently during any procedure you need to perform. Get as close as you need to be with a narrow patient support surface, slim back section, and tuck-away side rails.



#### Midmark 647 Podiatry Chair

The next step in foot and ankle care with an exclusive, ergonomic foot section design to put control right where it is needed—the foot section. Integrated touch controls on both sides of the foot section are not only convenient but also help reduce costly breakage of hand controls.



#### Midmark 391 ENT Chair

This exam chair was designed specifically with the Otolaryngologist in mind. That is because it offers a unique, thin back section allowing you to get in extra close and a magnetic headrest, which easily adjusts to position each patient precisely and effortlessly.





### Steris AMSCO 5085 Surgical Table

Accommodates virtually all patients with generous weight and height ranges Provides unrestricted perineal access with removable leg section. Optional Featherweight Leg Section complies with AORN Safe Handling principles



### Steris Cmax Surgical Table

Universal multi-specialty operating table. Extra-low intervention positioning of 58cm without sacrificing the maximum height of 110cm (dual telescopic column). Two-way 454mm slide. Optimal width table top—52cm wide. Radiolucent table top along the entire length. Table top articulation offset to the column.



### Skytron 6500 Surgical Table

The exclusive 180° rotating top allows unobstructed C-arm and microscope coverage. Additionally, it eliminates conflicts between surgeon and anesthesiologist during head-end procedures, and provides ample leg room for surgeons who prefer to sit during procedures.

### Steris AMSCO 4085 Surgical Table

The 4085 general surgical table meets your needs with a versatile, high-productivity general surgical table specifically designed to provide outstanding value. Now you can get a table that offers excellent imaging and patient posturing capabilities all in one.



### Skytron 6600 Surgical Table

Tabletop rotates 210° for superior C-arm and microscope capabilities, along with unparalleled access to the operative field. Lifts 1,000 pounds with 600-pound articulation capacity. Removable back and leg sections. Handheld remote control.

### Steris AMSCO 3080/3085 Series Surgical Table

One of the most reliable and popular surgical tables. Trusted for years by healthcare facilities across the world, the 3085 is a cost-effective solution for the general OR. The AMSCO 3085 SP surgical table deftly handles virtually all the surgical specialties you expect a general surgical table to handle,



### Skytron 6700 Series Surgical Table

Skytron 6700 Series represents the new standard in 21st Century surgical table design and performance, with unmatched imaging flexibility and even greater lift and articulation power. With its 1,200 lb patient weight capacity and the ability to be widened up to 16". Popular operating table option for bariatric surgery.



### Skytron 3600B Ultraslide Surgical Table

The UltraSlide 3600B provides 23 inch Top Slide, full table features and optimal patient positioning for C-arm access, including powerful 1,000 lb. lift and 800 lb. articulation. Additional clinical benefits of removable back and leg sections include improved anesthesia access.



### OSI Jackson Surgical Table System

360° rotation facilitates safe and efficient rotation of patient. Rapid horizontal axis rotation in prone or supine positions. Allows unique, multiplanar, intra-operative images of spine and pelvis. The rotational capability facilitates 360° spinal fusions without the need to remove the patient for repositioning.



### OSI Hana Surgical Table System

State-of-the-art answer to the challenges of hip and knee fracture and orthopedic procedures. It provides advanced manipulation of the lower extremities and at the same time offers superior imaging capability through its completely radiolucent carbon fiber constructs. Its foot pedal control offers convenience to surgeons when raising and lowering its platform or adjusting its femoral lift support during an operation.



### Steris AMSCO OrthoVision

Includes radiolucent abductor bars for imaging bone without distortion or obstruction. Positions patients for the full spectrum of orthopedic procedures without compromising C-arm imaging. Designed primarily for hip and lower extremities procedures. Mobile and manually operated. Table folds into a compact package when not in use (2" x 27 1/2" x 41"). Radiolucent abductor bars, wedge-shaped sacral rest, and perineal post provide exceptional imaging capability. Trendelenburg and lateral tilt capabilities.



### OSI Trios Surgical Table System

Offers a distinct user interface designed to complement the operating room workflow. This modern system features a table platform known for its customizable patient positioning for all spine and imaging procedures, including those requiring 180-degree rotation. Tower and ratchet system that provides a unique tabletop mounting interface resulting in secure connection and adjustable tabletop height before and after patient transfer. Streamlined 180° patient rotation mechanism, with two-stage locking release and clear indicator lights. Auxiliary panel provides a secondary source for controlling table motion. Customizable pad and component placement to meet individual patient needs.



### Allen Spine System

An extension for your OR table that enables you to perform spine surgery with the positioning benefits of a standalone spine table. The "squeeze and position" technology supports easy, precise readjustments of the head and cervical spine intraoperatively. The system provides excellent C-arm and O-arm access, hence also gives the radiolucency benefits of a standalone spine table. By using the power of the operating table, the Spine System offers intraoperative lumbar flex and repositioning of the patient. The small storage footprint is ideal in OR suites where storage space is at a premium.



### Oakworks CFPM400

A new, cost-effective table designed to accommodate mobile and ceiling suspended C-arm systems. The CFPM400 is a 4-movement table that has all the features required for successful pain management, image-guided procedures. The table is mounted on a new low-profile base and can be moved easily from room to room and secured with 4 locking casters. The integrated head rest carbon fiber top is capable of a 10" manual longitudinal travel, 15° Trendelenburg tilt, 12° reverse Trendelenburg tilt and 15° Lateral tilt while at the same time supporting up to 500 lbs of patient weight.





### Wilson Frame



The Wilson supporting frame provides a convenient and stable method of maintaining patients in a flexed position for spinal surgery. It has two curved full-length pads, which provide continuous support for chest and pelvis and adjust laterally to improve ventilation and relieve pressure from the abdomen. A recent evolution of this frame offers 360° of unobstructed radiolucency, for easily obtainable images by either C-arm or X-ray.

### Allen Lift-Assist Beach Chair



Designed for use with orthopedic procedures. The chair offers unobstructed access and the Lift-Assist mechanism makes repositioning the patient quick and easy. The Lateral Slide feature enables the surgeon to move the patient closer to the edge of the OR table for increased surgical site access. The Lift-Assist Beach Chair weighs under 30 lbs without the back-support panels installed. Ideal for use with rotator cuff repair, Bankart repair, SLAP lesion repair, clavicle repair, and more.

### T-MAX Shoulder Positioner



The T-MAX Shoulder Positioner provides ideal access, adjustability, and stability for Beach Chair shoulder procedures. Designed to attach to the rails of almost any OR Table. Superior head adjustment allows for infinite positions of tilt, rotation, and forward slide of the head. Sliding shoulder pad, and posterior placement allows for unparalleled access to the surgical site.

### Allen Yellofin Stirrups



Enables safe and easy positioning while providing enhanced surgical site access. Allow for easy adjustment of abduction and lithotomy in patients up to 500 lbs while maintaining the sterile field. These stirrups also feature lift assist technology to provide easy movement of the leg into the desired position.

### Acufex Knee Holder

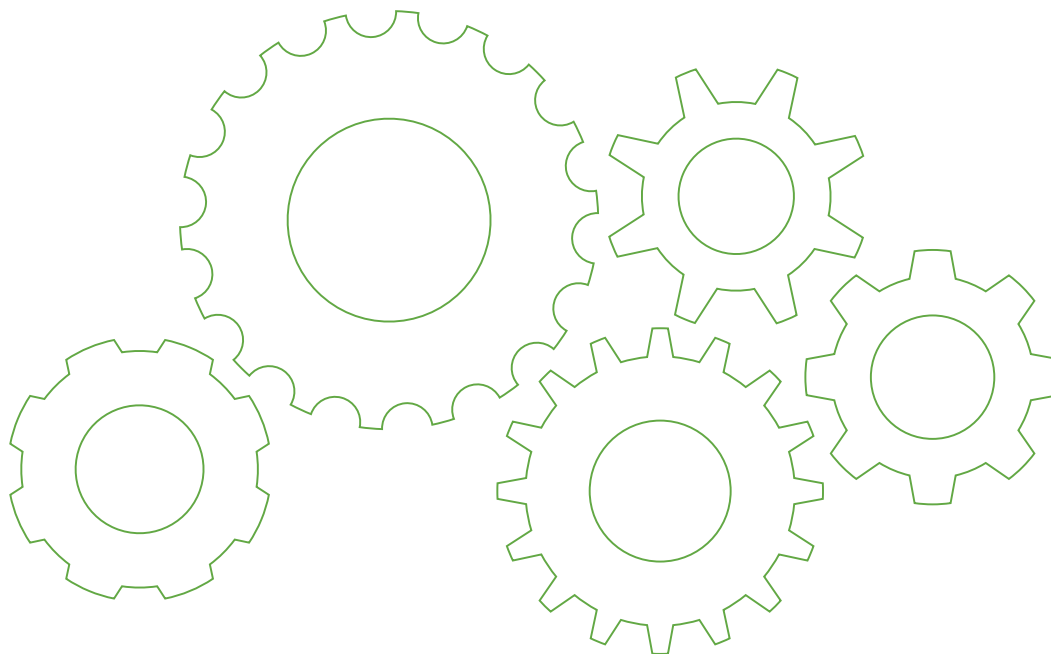


Used in arthroscopic knee surgeries. Top pad is height adjustable and the angle of the leg holder itself is adjustable left to right. Low profile anatomically correct, quadrilateral shaped pads. Requires Clark socket.

### Arthrex AR-1600M



This versatile system provides safe, effective, and easy positioning of the shoulder during all types of arthroscopic or open shoulder surgery performed in the lateral decubitus position. Three-point traction with a lateral strap permits ideal shoulder positioning for improved access to the glenohumeral joint. The 3-Point Shoulder Distraction System attaches easily to standard OR table clark rails and has color-coded cable ends for easy identification when transferring traction weights.







## Covidien Valleylab Force FX

Designed for the most demanding monopolar and bipolar procedures, with a PER of 98 in cut. It adjusts automatically, responding to tissue changes, maintaining power delivery, and minimizing drag.



## Covidien Valleylab FT10

The Valleylab FT10 is a high frequency electrosurgical generator intended for use with monopolar and bipolar accessories for cutting and coagulating tissue. When used with compatible sealing devices, it is indicated for sealing vessels up to and including 7 mm, tissue bundles, and lymphatics.



## Valleylab Force FXc Electrosurgical Generator

Provides surgeons with the advantage of accurately delivering the selected power setting, even through resistant tissue. 3 Cut Modes: Low Cut, Pure Cut, Blend



## Covidien Valleylab Force Triad

Full-featured electrosurgical system that provides electrosurgical cutting and coagulation, bipolar functionality, and vessel sealing in a single generator. Open and laparoscopic surgical procedures.



## Valleylab Force 2 Electrosurgical Unit

Provides cutting and coagulation in monopolar or bipolar outputs. Provides flexibility through varying degrees of hemostasis by allowing you to choose one of three preset modes. Permits two surgeons to fulgurate from a single generator.



## ConMed System 5000

Unique modes on the System 5000 include the Fluids Mode, for an additional boost of energy in procedures taking place in a fluid environment, and Lap Mode, which limits open circuit voltages to below 2700 volts in all modes and reduces the potential risk of inadvertent burns from capacitive coupling.



## ConMed System 2450

The simple yet highly sophisticated System 2450 is ConMed's workhorse electrosurgical generator. It combines advanced, powerful technology with an easy-to-use interface, making it ideal for general surgery and specialist surgeries that do not require advanced modes.



## Valleylab Smoke Evacuator

Effectively filters and removes surgical smoke without creating additional noise in the OR. The Rapidvac™ system synchronizes with the electrosurgical generator and will work automatically when the generator is turned on.



## Bovie Aaron 2350 Electrosurgical Generator

200 watt high power, operating room generator, by Bovie. The unit incorporates the power and safety of a premium OR generator at a significant savings to the medical facility. The system delivers 12 monopolar and bipolar RF energy.



NEW



## Bovie IDS 310

The system was designed in conjunction with OR clinicians to provide a safe, user-friendly generator to meet all operating room procedure performance demands. This innovative energy-based device offers 13 modes of surgical energy delivery. These modes were included to assist surgeons in tailoring all electrosurgery needs for their variety of surgical applications and user preferences.



### Stryker 940 Cast Saw

A multi-purpose cast removal tool. The 940 Cast Cutter reinforces Stryker's continuing commitment to superior surgical equipment quality. It is a multi-purpose cast removal tool with an ergonomic design that optimizes user control and comfort.



### Dillon CoPilot Video Laryngoscope

Combines the best intubating technology with the best price. Along with a great view of the cords, you can choose your way of intubation, stylet or bougie. The Bougie Port will deliver a standard bougie directly to where the camera is looking. You can then thread your ETT over the bougie in the standard fashion.



### Verathon GVL Glidescope

High resolution camera for real-time view of the airway and tube placement. Reveal anti-fog feature with a rapid heating profile to resist lens fogging. Non-glare color monitor with NTSC video output for recording.



### Verathon AVL Glidescope

Get a better airway view with a large, full color monitor. Improve training and document intubation results with features such as snapshot and video recording. Digital color monitor with anti-reflective screen. Integrated real-time video recording and snapshot capability.



### Armstrong A-Smart Cart

Lightweight, aluminum construction or sturdy, steel construction. Multiple locking systems to choose from Mounting tracks or holes for easy accessory attachment. Stabilizing frame with bumper. Double side-wall construction. High-quality swivel casters (two locking, one tracking). Soft-grip handles. 18 colors. Durable powder paint.



### Physician Stool

Ergonomic vinyl stools feature a 360° adjustable height adjustment that can be operated from any position. Medium bench height stools. More than 65 antimicrobial/antibacterial standard and custom vinyl color configurations. Optional 20-inch diameter chrome foot ring is available. Each ergonomic stool is backed by our 15-year warranty, lifetime on the pneumatic cylinder.



### Anesthesia Stool

Ergonomic vinyl stools adjust to fit most body types and workstations. The upholstered cushion includes highly durable molded polyurethane foam. Additional ergonomic benefits include an adjustable back rest with lumbar support for increased comfort during extended sitting durations. Optional seat tilt provides 8° forward and 3° backward locking tilt for ergonomic posture support. Medium bench height stools. More than 65 antimicrobial/antibacterial standard and custom vinyl color configurations. Optional foot rings are available in 18 1/4-inch diameter, black, nylon-reinforced fiberglass or 20-inch diameter chrome. Each ergonomic stool is backed by our 15-year warranty, lifetime on the pneumatic cylinder.

**ADDITIONAL ITEMS:** We sell various types and brands of surgical table pads.  
Please contact us at: [direct@centurionservice.com](mailto:direct@centurionservice.com) for additional information.

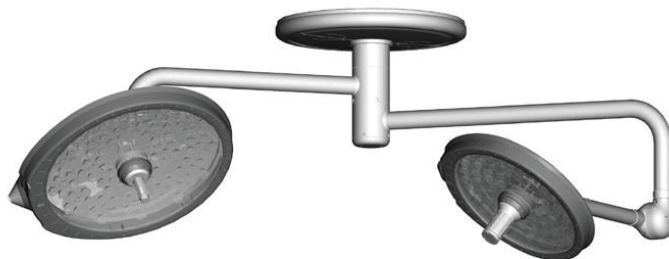


## Surgery/Operating Room Lights

To order, contact us at 708-761-6655 or [direct@centurionservice.com](mailto:direct@centurionservice.com)  
Items subject to availability.

### Steris Harmony 585 LED

The Steris Harmony 585 LED surgical lighting system is designed to provide high-intensity illumination in almost any surgical setting. The Harmony LEDs produce up to 14,800 ft candles (160k lux) of cool, pure white, natural light in a pattern that can be adjusted from 7" to 11". The wall mounted control center is included and allows for intensity adjustment at the control center or on the light heads themselves.



### Nuvo Vu Dual Center Mount

A true example of how high quality and high performance can be delivered in an extremely affordable manner. This light has created a new standard in the industry being available as a single, dual, or triple ceiling mount. Thereby extending its range of applications beyond the hospital into ambulatory, small clinic and physician office settings. Cross Focus Technology enables the LED's to move independently of each other while adjusting the pattern size from 9.5"-14". CFT allows the Vu to provide the same output on the large pattern as it does on the small pattern.



### Nuvo VistOR Dual Center Mount

The VistOR Series of lights exemplifies the evolution of the Nuvo lighting line by providing state-of-the-art features in a stylish yet highly functional design. The VistOR product line extends the range of applications to cover minor treatment rooms, exam and procedural applications in hospitals, ambulatory surgery centers, clinics, and physician offices.



### Nuvo Navigator Equipment Management System

The combination of duplex outlets and provision for gases combined with the ease with which it can be moved, the NUVO Navigator Equipment Management System can support your full range of equipment in today's operating room. The use of tapered roller bearings and a healthy throat size on the suspension arms allow the Navigator to accommodate a full complement of services without compromising mobility.



### Stryker Visum II/Visum Blade

Suitable for all major and minor surgical procedures in operating rooms and all other healthcare facilities where the need for illumination exists. The light quality is based upon high-quality LED's to provide cool light with reduced shadow resolution. Minimizes the effects of shadows by using proprietary refractor technology and delivers consistent bright light.



### Nuvo Vidashield UV24

A fast, 24/7, active air purification system that uses UV-C to reduce bacteria and fungi from the air. This patented device is uniquely designed by combining an ultraviolet germicidal irradiation (UVGI) chamber and air circulating fans with an overhead ceiling light.







### Startrol Galaxy 8X4/4X4

LED's are brighter and features five level diming. The new sleek design features a fully enclosed light head for improved clean ability. Energy-efficient and eco-friendly with bright, natural white light. 50,000 hours of LED life and infinite variable positioning. Simple construction enables easy cleaning and service.

Also available: Startrol Mobile 8X4

NEW



NEW



#### Nuvo VistOR Pro Lights

On/off and intensity settings are easily controlled from the sterilizable handle. 36 high efficiency ultracool LED's provide superior illumination and unmatched shadow control. Precision-balanced and articulated arm to allow the greatest reach and range of positioning with surprising ease. Optional Battery Back-Up available for portable and ceiling/wall mounts. Complete range of mounting options: Single Ceiling, Dual Ceiling, Wall, and Portable Mounting options.

NEW



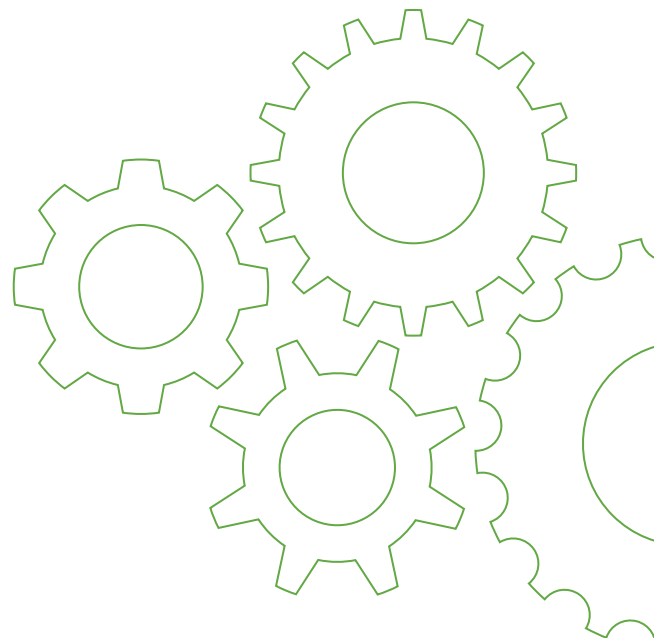
#### Nuvo VistOR PR & EX Lights

Ideal and surprisingly affordable, mid- sized light for minor surgery, procedures, and exams. Delivers maximum brightness, sharpness, and color accuracy. 3-stage dimming via the sterilizable handle lets you easily control brightness within the sterile field. Optional Battery Back-Up available for portable and ceiling/wall mounts. Range of mounting options: Ceiling Mount, Wall Mount, Freestanding Mobile Unit or Track Mounted.



#### Welch Allyn GS300

A single white, bright LED that does not require replacement. The GS 300 Exam Light provides a whiter, brighter light than halogen and consumes less energy for improved facility efficiencies. The Green Series Lights were designed to improve patient exams while reducing environmental impact.





## Datex Ohmeda Avance CS2 Anesthesia Machine

An advanced, integrated Carestation™ featuring a sleek 15-inch touchscreen display and intuitive user-interface that can help take the work out of your work-flow. Anchoring the Avance CS² is a sleek user-interface enabled by a beautiful 15-inch touchscreen display. See for yourself how it can help take the work out of your work-flow. With everything flowing together, the Avance CS² isn't just another anesthesia delivery system. It's a Carestation.



### Datex Ohmeda Aestiva 5 Anesthesia Machine

The Datex Ohmeda Aestiva 5 offers exceptional capabilities and flexibility. The Datex Ohmeda Aestiva 5 with SmartVent offers selected capabilities of an intensive care ventilator, saving users the cost of bringing a separate ICU ventilator into the OR. Its flexible ergonomic design and intuitive operations enhance SmartVent's capabilities to give users a higher level confidence and control. In addition, the Datex Ohmeda Aestiva 5 provides an optimized system for the practice of low and minimal flow anesthesia, minimizing agent consumption to save on anesthetic agent costs.



### Datex Ohmeda Avance S5 Anesthesia Machine

The Avance S5 Carestation was developed using our unique approach to perioperative solutions close and continuous collaboration with clinicians. Clinicians will benefit from the compact, integrated anesthesia Carestation that features advanced anesthesia delivery, the very best in anesthesia patient monitoring, and Deio care information management. By combining these care elements with our supplies and services, we deliver an essential component of your integrated perioperative solution.



### Datex Ohmeda S/5 Aespire Anesthesia Machine

S/5 Aespire marks the introduction of the Advanced Breathing System (ABS). This integrated breathing system enables: Easy on/off capability, facilitating easier cleaning and reduced maintenance time. Ease of disassembly (no tools) and cleaning (fully autoclavable). The S 5 Aespire was developed using Datex Ohmeda's unique approach to anesthesia workstation development—close and continuous collaboration with clinicians. It combines the proven performance of the 7100 Ventilator with Datex Ohmeda monitoring technology into a system designed for clinicians throughout the world.



### Datex Ohmeda Aespire View Anesthesia Machine

The GE Datex Ohmeda Aespire View anesthesia machine features a large 12-inch color ventilator display with color waveform and alarm message indicators. This Anesthesia Machine has a minimum O2 flow of 50 ml/min helps ensure accuracy in low-flow situations. With the Space in an OR being tight, the Aespire View was designed to be lightweight, compact, and easy to move around. With its sleek contemporary body, the anesthesia machine is durable and easy-to-clean. Additional equipment may be attached to the anesthesia system either on the top shelf or on the side dovetail rails.



## Datex Ohmeda Aespire Anesthesia Machine

Minimum O<sub>2</sub> flow of 50 mL available with dual flow tubes enhances accuracy in low-flow situations. Bellows provide quick visual confirmation of the integrity of breathing system. Volume Control ventilation, integrated volume and oxygen monitoring, electronic PEEP, and alarm management.



## Datex Ohmeda Aespire/5 Anesthesia Machine

Flexible ergonomic design and intuitive operations enhance SmartVent's capabilities to give you a higher level confidence and control. In addition, the machine provides an optimized system for the practice of low and minimal flow anesthesia, minimizing agent consumption to save on anesthetic agent costs.



## Datex Ohmeda Aespire/5 MRI Anesthesia Machine

Multi-faceted system that addresses the many demands of your MRI environment. Whether your MRI unit is equipped with high field closed or lower field open magnets, up to 3T, diagnostic and/or surgical capabilities, the Aespire/5 MRI is capable of handling your cases. It even performs at the 300 gauss line in the presence of 3T magnets.



## GE Carestation 600 Series Anesthesia Machine

The Carestation 600 series is a compact, versatile, affordable and easy to use anesthesia platform that features a: Sleek integrated design suited for constrained environments. Simple user interface for improved workflows. Scalable tools and technology for diverse patient acuties. To help clinicians deliver efficient, precise and reliable anesthesia care to solve today's toughest challenges.



## GE Aisys CS2 Anesthesia Machine

The GE Aisys CS2 is an anesthesia machine that is a technologically sophisticated class of digital Carestation that manages an intuitive user-interface. Moveable 15" touch ventilator monitor. Compact breathing system designed for low flow to help provide fast gas kinetics for rapid wash-in and wash-out. Advanced breathing system (ABS) ensures a fast circuit response to assist clinicians with anesthesia delivery.



## Dräger Apollo Anesthesia Machine

Advanced ventilation capability provides ICU quality ventilation in the OR. Spontaneous breathing support. Electrically powered piston ventilator requires no drive gas. Enhanced monitoring capability provides user with the information they need to make clinical decisions.



## Dräger Primus Anesthesia Machine

Designed to be nothing less than your personal anaesthesia assistant. It's a combination of time-tested design and state-of-the-art technology created to answer the demand for a modern, comprehensive anaesthesia solution for today's increasingly complex healthcare environment.



## Dräger Fabius GS Premium Anesthesia Machine

Premium anesthesia machine combines time-tested design concepts with the comfort and utility of modern digital technology. It's an anesthesia workstation built for today and ready for the future. Export gas flows, concentrations, and more to our Infinity® patient monitors.



## Dräger Fabius Tiro Anesthesia Machine

At its core, the Fabius Tiro anesthesia machine features our powerful and accurate E-vent piston ventilator, which gives you the ability to handle a wide range of acuity levels. Its compact design makes it a natural choice for applications where you need to get the most of the available room without having to compromise on features or flexibility. With a wide array of options to choose from, the Fabius Tiro can be customized to suit your needs and even be upgraded when those needs change.



## Mindray A5 Anesthesia Machine

15" touch screen. Provides a range of advanced ventilation modes enabling effective care across the range of patient acuity types. Integrated spirometry offers additional information and enhances careful decision making. The auxiliary Oxygen/Air flow meters deliver blended gas through the nasal cannula.



## Mindray A3 Anesthesia Machine

Today's anesthesia professionals demand intuitive ways to deliver the technology that can provide better patient care. With a focus on key ventilation modes, a large easy to see display, touchscreen control, and by eliminating menus, trim knobs and dedicated buttons, the A3 promotes simple utilization of its key ventilation features. Experience the convergence of value and performance.





## Karl Storz Image 1 HD Camera System

The IMAGE 1 HUB HD constitutes the backbone of the KARL STORZ FULL HD Imaging System. With 1,920 x 1,080 resolution and progressive scan, the camera control unit (CCU) guarantees a lag-free image and natural color reproduction. The unique combination of ease-of-use and excellent image quality ensures time-efficiency and maximum patient safety, marking a new milestone in the evolution of endoscopic imaging.



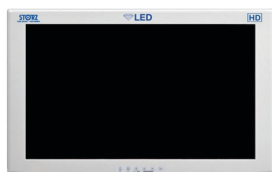
### Storz AIDA Capture Image Management

Works with both analog and digital video signals. It can also work with a wide range of storage media, such as optical media and flash memory. Numerous USB ports at the back panel also allows it to conveniently connect with other documentation peripherals.



### Storz 300 Watt Xenon Light

Cermax xenon lamp by Excelitas is the xenon light source of choice for fiber optic illumination applications such as endoscopy and surgical headlamps. Warranty period for up to 500 hours.



### Storz LED Monitor

Full HD Display 1920 x 1080. Anti-reflection coated front glass. Compact lightweight design. Drip water protected, dust proof housing. Fast response time, lag-free imaging. Picture-in-picture display (PIP).  
Optional fiber optic input.



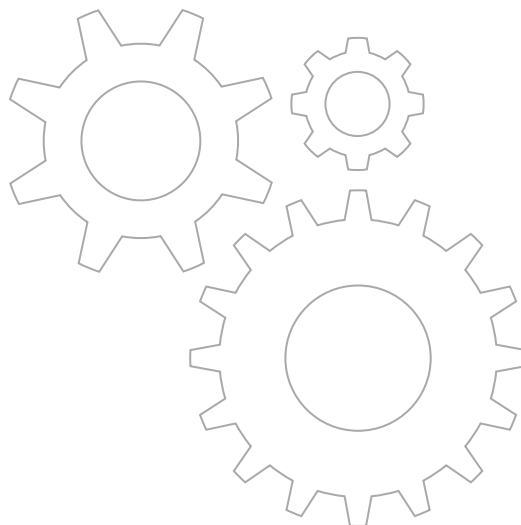
### Storz 30 liter Thermoflator Insufflator

30 liter high flow LED display, bar graph, pressure range 0-30mm Hg.



### Storz Video Cart

Compact design for working in limited space yet offers ample shelf space for all endoscopic configurations. The cart is strong enough to protect valuable video equipment yet lightweight enough to facilitate evolving OR configurations.





## Stryker 1688 Camera System

The Stryker 1688 allows for real-time imaging of anatomy during surgery, with automated light control for a seamless workflow across multiple specialties. The Advanced Imaging Modalities allow surgeons to see beyond the pixels so they can provide optimal care for their patients.



## Stryker SDC3 Image Management

On-screen device status designed to improve patient safety, can also be displayed on the surgical monitors, ensuring staff engagement. HD dual-channel recording options, the SDC3 can be used to record native HD video from multiple video sources.



## Stryker 1588 AIM Camera System

High-definition camera system designed to help distinguish critical anatomy with 9 dedicated surgical camera specialty settings and 5 advanced imaging modalities: ENV, IRIS, Clarity, DRE, and DESAT. Our long history of innovation and constant development in advanced imaging and OR connectivity is driven by the desire to allow you to see and do more. The 1588 AIM platform demonstrates our focus in a single, multi-specialty solution.



## Stryker L9000 Light Source

The Stryker L9000 Light Source is a light-generating unit designed to illuminate surgical sites during endoscopic applications. The L9000 uses light-emitting diode (LED) technology to generate bright, crisp light, which it delivers to the surgical site via a fiberoptic light cable. The L9000 is compatible with all Stryker light cables and, with the proper light cable and adapters, can connect to any flexible or rigid endoscope.



## Stryker 1488 HD Camera System

Camera Control Unit (CCU), Camera, Coupler, Power Cable, and DVI Cable. Advanced CMOS technology and premium optics to provide a clear bright image designed to enhance patient outcomes. Cross-specialty standardization is enabled through nine dedicated surgical specialty settings.



## Stryker Vision Pro LED Monitor

26" LED Display. Increased brightness, contrast, and custom gamma curves provide surgeons improved clarity and color reproduction across all surgical specialties.



## Stryker 1288 HD Camera System

Camera console, camera head, C-mount coupler, Power Cable, and DVI Cable. 3-Chip Camera features a 1920 x 1080p resolution along with nine specialty settings, resulting in optimum color resolution and brightness.



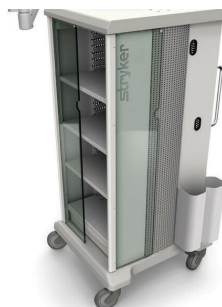
## Stryker 45 Liter PneumoSure Insufflator

Includes 2 additional modes for Bariatrics and Vessel Harvesting. The 45L PneumoSure insufflator offers real time pressure sensing for increased accuracy during a procedure. Its ability to maintain pneumoperitoneum under the most extreme conditions.



## Stryker 1188 Camera System

Camera Control Unit (CCU), Camera, Coupler, Power Cable, and DVI Cable. This innovative camera offers outstanding picture quality, enhanced clarity, more intuitive user controls, and can be steam sterilized for quick turnaround and better OR efficiency.



## Stryker Video Cart

Compact design for working in limited space yet offers ample shelf space for all endoscopic configurations. The cart is strong enough to protect valuable video equipment yet lightweight enough to facilitate evolving OR configurations.



## GE OEC 9900 Elite C-arm 9"

Premium Digital Mobile Imaging C-arm System is designed to provide excellent image quality in a variety of clinical applications such as the ER, ICU, or OR. OEC Mobile C-arms are consistently rated as the most easy to use medical imaging devices due to their intuitive user interface and software design. The OEC 9900 C-arm is the only "immediate image" fluorosystem on the market. Up-time is maximized due to battery buffer technology that allows longer on-times in addition to a built-in monitoring indicator helps you manage cooling and heat concerns.



## GE OEC 9900 Elite C-arm 12"

Superb image quality and an easy-to-use interface, which is ideal for the ER or OR. High-quality low dose surgical imaging, in a hospital or outpatient setting. Imaging profiles optimize your image to compensate for bone and tissue. With the exclusive SmartView pivot joint, you can capture true lateral views regardless of the imaging angle, minimizing the need for repeated exposures.



## Philips BV Pulsera C-arm

Full-size mobile fluoroscopy system that boasts high power output and a rotating anode that supplies a 300,000 HU anode heat capacity for longer procedures. Can be equipped with Cardiac and Vascular capabilities. The BV Pulsera C-arm system can be used for a wide-variety of procedures including: Cardiovascular, Orthopedic surgery, Abdominal surgery, Neurosurgical, Thoracic surgery.



## OEC 9800 C-arm

Provides optimal viewing and positioning as a result of its SmartView off-axis pivot joint. The most-used C-arm interface in the world offers convenience to clinical needs with a variety of imaging modes that allow one to complete diagnostic or interventional applications confidently.

Available with 9" or 12" Tri-Mode Image Intensifier  
Dual Hi Resolution Monitors. Rotating Anode X-Ray Tube.



## Siemens Arcadis Varic C-arm

Supports a wide range of applications including vascular surgery, trauma surgery, urology, orthopedics and more. The overall ergonomic concept of the ARCADIS Varic mobile C-arm can redefine clinical work-flow in many fields of practice. Excellent imaging is a snap. 1k image quality.



## OEC 9600 C-arm

Lightweight and can run continuously during fluoroscopic procedures due to its ability to quickly dissipate heat with its rotating anode. Images are processed digitally and motion artifact reduction, real-time histogram generation, and real-time subtraction are among this C-arm mobile units abilities. Images may be stored in memory, diskettes, or a hard disk option.





### Hologic Insight FD C-arm

The Hologic Fluoroscanner InSight FD mini C-arm provides diversified imaging options, an enhanced interface and a 24" HD touchscreen interface for extremities imaging.

The system incorporates a rotating flat detector. This enables imaging of long bones and is designed to help minimize radiation by preventing patient and surgeon exposure to the unused area of the detector.



### Orthoscan FD Pulse Mini C-arm

The FD Pulse provides dose reduction with state-of-the-art image quality. The square-shaped CMOS flat detector provides the greatest field of view, enabling the user to see more anatomy. This flat detector design and compact form factor allows optimal positioning in the surgical environment. Surgical lights on the undersurface of the x-ray source reduce shadows by providing primary light in the surgical field, illuminating anatomical detail.



### GE OEC 6800 Mini C-arm

The 6800 is one of the most popular mini c-arms in the world. It is the first Mini C-arm to use 1k2 imaging and a touchscreen interface. At the system startup, the imaging capabilities are immediately available from the footswitch or hand switch. You can complete an exam by turning on the power, entering patient information, and pressing the X-ray switch. The system automatically selected the best combination of X-ray imaging parameters to produce an optimal image. This C-arm is a perfect fit for sports medicine, orthopedics, surgeons, and veterinary medicine.



### Hologic Insight II Mini C-arm

Intuitive and easy-to-use, cost-effective system designed specifically for the orthopedic and extremity imaging market. With high-quality digital images, simplified operation and easy mobility, the system is the ideal choice for the operating room, emergency department, doctor's office, surgery center, and sports medicine facility. Equipped with a standard 6"7/4" image intensifier and delivers ultra-fine, low-dose fluoroscopy and snap-shot images.

## Ultrasound



### Sonosite S Series

This ultrasound was the industry's first mountable ultrasound. They offer a zero footprint and can be mounted on a wall, the ceiling, or a stand. Mounted system decreases clutter and enables more unrestricted movement in tight spaces. System arm accessory reaches patient from head to toe.



### GE Vivid E

Portable ultrasound is a shared service portable ultrasound system focusing on cardiac imaging. Enhanced, real-time definitions give you the clinical confidence you have been waiting for in a compact and convenient ultrasound system. The Vivid E is all about power and features in a compact form.



### GE Logiq F8

This ultrasound has features and advancements that urologists are looking for in a new ultrasound system, including: Image quality - Visualize superficial and deep anatomy with excellent penetration. Advanced features like Speckle Reduction Imaging (SRI) help enhance resolution for image clarity.



### Philips iE33

Philips appeals to the clinical needs of patients with cardiac disease, such as heart failure, vascular disease, and congenital heart disease. The Philips iE33 provides high quality images in both 2D and Live 3D imaging, along with quantification, clinical performance, and information management. This Philips model contains Cardiac Motion Quantification, which increases the accuracy of LV function and wall motion measurement.



### GE Venue 50

Get crisp images without time-consuming tweaking. Portable and wireless, the system can be moved from patient to patient without powering down. Touted as a true Point of Care ultrasound machine on a tablet platform, the Venue 50 can handle a range of applications including basic cardiac, vascular, anesthesia, interventional & MSK.



### Philips CX50

The CX50 system stores active native acoustic data giving you the ability to adjust virtually all scanning parameters on single images, clips and stored 2D and Doppler data. Images can be readjusted during or after the exam, enhancing diagnostic details, allowing for short exam times.



### Carefusion Viasys AVEA Ventilator

Provides comprehensive critical care ventilation for a wide range of patients with complex respiratory diseases. In the ever-changing world of healthcare, you face more challenging patients and more pressure to deliver outcomes. The AVEA was designed with you in mind. Its comprehensive array of clinical tools and advanced monitoring allow you to guide your patient through the continuum of care simply and efficiently with a focus on improving outcomes.



#### Dräger Evita XL Ventilator

The Dräger Evita® XL delivers a comprehensive array of both controlled and assisted ventilation modes. It combines a broad range of performance capabilities with many advanced application functionalities, providing outstanding ventilation therapy and easy-to-use operation encompassing the entire scope of the ventilation process. The Evita® XL helps caregivers find optimal ventilation settings, supports the weaning process, and improves caregiver workflow. It also offers mask ventilation with NIV plus, which in many cases reduces the need for invasive intubation. NIV plus, the newest innovation in mask ventilation, features an advanced, dynamic leak compensation system.



#### Dräger Babylog 8000 Plus Ventilator

More than 40 years of experience in neonatal ventilation and a century of expertise in breathing technology have gone into Dräger Medical's Babylog® 8000 plus. The result is a neonatal ventilator that satisfies the extremely high standards you set in caring for your little patients.

Sensitive, accurate synchronization and continuous adaptation features work together to provide the necessary ventilator support, allow optimal levels of spontaneous breathing, facilitate the weaning process and protect the baby from adverse effects such as volutrauma or atelectasis.



#### Dräger Savina Ventilator

With its open breathing system, the Savina enables spontaneous breathing at any time and any pressure level in all ventilation modes during ventilation cycles. Features an internal turbine that removes the need for air cylinders or an external compressor. Navigate power failures and support mobility with an internal battery. Multiple ventilation modes accommodate various acuity levels and patient populations. Precise, endurable O<sub>2</sub> dosage enabled by nine rubies. Independent, unseen "bodyguards" for improving safety for the patient, and backup twin sensors for airway pressure, FiO<sub>2</sub> and minute volume



#### Philips Respironics Trilogy 100/200/202 Portable Ventilator

Featuring both a volume-control and a pressure-control ventilator for invasive and non-invasive ventilation, the Trilogy vent provides versatile breath delivery and setup options. With one simple setting change, the 100 supports either active or passive exhalation breathing circuits to accommodate changes in circuit preference. Because the Trilogy 100 has the unique ability to compensate for leaks in both pressure and volume control modes, using simpler passive circuits may help you save time and money. The Trilogy allows freedom of movement. Three hour internal battery, optional three-hour detachable battery and only 5.6 kg facilitate convenient handling during intra-hospital transports.



## Medtronic PB980 Ventilator

Helps patients to breathe more naturally through some of the most innovative breath delivery technology. Its simple, safe and smart design helps provide more natural ventilation that may help improve patient comfort. Ventilation modes available for the Puritan Bennett 980 ventilator are Assist Control (A/C), Synchronized Intermittent Mandatory Ventilation (SIMV), Spontaneous (SPONT), BiLevel, Continuous Positive Airway Pressure (CPAP). Mandatory breath types: Volume Control (VC), Pressure Control (PC) and Volume Control Plus (VC+).



## Siemens/Maquet Servo - I Ventilator

Satisfy the ventilation needs of every patient, from neonatal to adult. It can handle the most acute phases of respiratory distress through recovery to the weaning phase. It continuously delivers outstanding ventilator treatment as gently as possible, thanks to its ventilator performance, monitoring capabilities, treatment options and tools. Servo-I makes excellent ventilation quality available in practically all environments: from ICUs to NICUs, via intra-hospital transport to MR examinations and hyperbaric chambers.



## Medtronic PB840 Ventilator

Critical care ventilator that is responsive to patients and offers superior comfort, delivering sensitive, precise breaths to critically ill neonatal through adult patients. With highly responsive proportional solenoid valves, an active exhalation valve and state-of-the-art flow sensors, the PB840 ventilator provides exceptional responsiveness and control. A special filter heating process shields patients and clinicians from exposure to viruses and bacteria from exhaled gases. Expiratory filter is capable of filtering viruses such as SARS. Special circuit disconnect alarm does not rely on low pressure or tidal volume to activate. When a circuit disconnects, gas flow stops to prevent the spread of contaminants.



## Maquet Servo - S Ventilator

Based on proven SERVO technology, ensuring safe, reliable and high quality ventilation. By combining state-of-the-art sensitivity and reliability with user-friendly simplicity, SERVO-s delivers top performance for both adult and pediatric patients in a variety of hospital ventilatory care settings. Maquet SERVO ventilators set the standard for the field of critical care. Based on proven SERVO technology, SERVO-s offers leading edge mechanical ventilation in a straightforward package.



## Medtronic Newport HT70 Ventilator

Combines ruggedness, ease of use, and clinical proficiency with exceptional mobility for patients from 5kg to adult. All models of the Newport™ HT70 ventilator family can be used for home care, transport, hospital, long-term care, and emergency preparedness, as well as for invasive or non-invasive ventilation. Offers an on-airway flow sensor that provides expanded monitoring with alarms and the choice of flow or pressure trigger. Waveform graphics, an oxygen cylinder usage calculator, and an internal battery use time estimator.



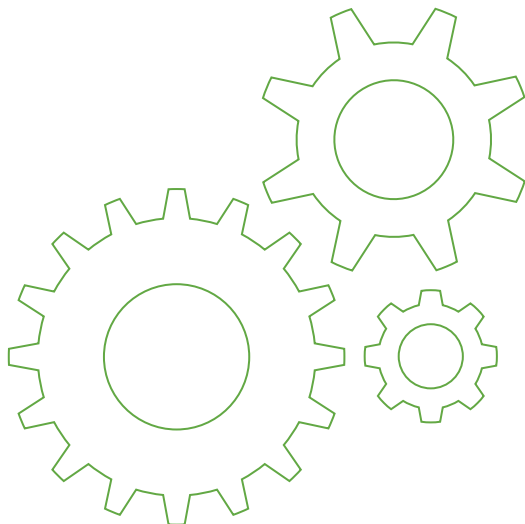
## Respironics Esprit Ventilator

Combines sophisticated design with easy-to-use features. This microprocessor driven unit upgrades easily and offers a range of modes and breath types. These include: volume control, pressure control, and fully integrated non-invasive ventilation. Because the Esprit Ventilator has no need for wall air or compressors, and can be run on either AC power, battery pack or an external battery, the Esprit's mobility and versatility make it ideal for use in any setting, from hospital to sub-acute care facilities.



## Respironics BiPAP Vision Ventilator

Specifically designed to address the unique requirements of Non-Invasive Ventilation within the hospital, including changing leaks, dynamic breathing patterns, and high FIO2 and flow demand. The BiPAP Vision features accurate monitoring, reliable alarms, and an intuitive menu. Auto-Trak ensures optimum sensitivity despite changing breathing patterns or circuit leaks. Auto-adaptive triggering and cycling reduce work of breathing and support patient-ventilator synchrony, supporting patient compliance and reducing the need for manual adjustments.







## 400 Series medium sterilizers, 60" & 48"

The AMSCO 400 Series® Medium Steam Sterilizer is designed for today's demanding Sterile Processing Departments (SPDs). This autoclave safely sterilizes up to 375lbs per cycle, allowing you to efficiently handle high-volume sterilization and heavier trays while meeting compliance guidelines.



## 400 Series small sterilizers, 20" & 16"

The AMSCO 400 Series Small Steam Sterilizer provides efficient sterilization for space constrained facilities. While meeting AAMI/AORN guidelines, this 20 x 20 autoclave is validated to accommodate up to three 25-lb sets.



## Steris AMSCO Century V148

Designed for fast, efficient sterilization of heat and water-resistant materials with the same capabilities as a gravity sterilizer. The pre-vacuum sterilizer is equipped with pre-vac, gravity, flash, express, leak test, and daily air removal test cycles. With a 24" x 36" x 48" chamber, the V148 sterilizer provides enough space fit all your equipment and sterilize with speed and reputable quality in mind.



## W&H Lexa

The Lexa is designed to remove air rapidly by repeatedly alternating a steam flush and a pressure pulse (SFPP). A vacuum-assisted, closed-door drying cycle follows CDC best practices for dental instrument sterilization and produces bone-dry loads.



## Steris AMSCO Century V120

Steam Sterilizers are designed for fast, efficient sterilization of heat and water-resistant materials with the same capabilities as a gravity sterilizer. The V120 pre-vacuum sterilizer is equipped with pre-vac, gravity, flash, express, leak test, and daily air removal test cycles. With a 20" x 20" x 38" chamber, the V120 sterilizer provides enough space to fit all of your equipment and sterilize with speed and reputable quality in mind.



## Midmark M9 Sterilizer/Autoclave

Simple to use and effective. Select your cycle and the time is set for you. Press "Start" and the M9 fills with the correct amount of water. Once the sterilization process is complete, the door opens automatically. Steam-Flush Pressure Pulse Air Removal System ensures proper steam penetration.



## Steris AMSCO Century V116

Steam Sterilizers are designed for fast, efficient sterilization of heat and water-resistant materials with the same capabilities as a gravity sterilizer. The V116 sterilizer is equipped with pre-vac, gravity, flash, express, leak test, and daily air removal test cycles.



## Midmark M11 Sterilizer/Autoclave

11" x 18" chamber gives the M11 the distinction of being one of the largest of any standard countertop sterilizer on the market, making it perfect for larger packs and instruments. Steam-Flush Pressure Pulse Air Removal System ensures proper steam penetration. Simply load it, set it and forget it.



## Steris AMSCO 3052 Washer

The Amsco 3052 Single-Chamber Washer/Disinfectant is designed for use in the cleaning and intermediate-level disinfection of soiled reusable utensils, trays, bedpans, and urinals. It can also be used for rubber and plastic goods, simple hard-surfaced rigid surgical instruments (such as forceps and clamps) and other similar and related articles found in healthcare facilities.



## Steris Reliance Synergy Washer

The Steris Reliance Synergy Washer/Disinfectant is a mechanical washer equipped with an Eagle 3000 Stage 3 control system. The Reliance washer/disinfectant is designed with nine adjustable cycles. One additional cycle is available for customized programming to meet specific operating requirements.



### Stainless Steel Back Table

Stainless steel construction eliminates full sub-tops where undesirable substances can collect. 3" rubber, double ball bearing casters for silent mobility. Sound deadened reinforcing channels for quiet use. Easy to clean. 36" or 48" or 60" or 72" W x 24" D x 34" H



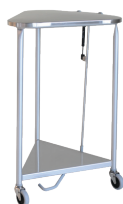
### Stainless Mayo Stand

Removable 16-1/4" x 21-1/4" stainless-steel tray for easy cleaning. Convenient foot-pedal operated lock adjusts height from 36" to 62". Base designed to move under low clearance equipment with maximum stability. All welded stainless steel construction. 2" double ball bearing swivel casters. 50 lbs. weight capacity (evenly distributed).



### Stainless Steel Prep Stand

Stainless steel construction eliminates full sub-tops where undesirable substances can collect. 3" rubber, double ball bearing casters for silent mobility. Sound deadened reinforcing channels for quiet use. Easy to clean. 20" W x 16" D x 34" H



### Stainless Linen Hamper with Lid

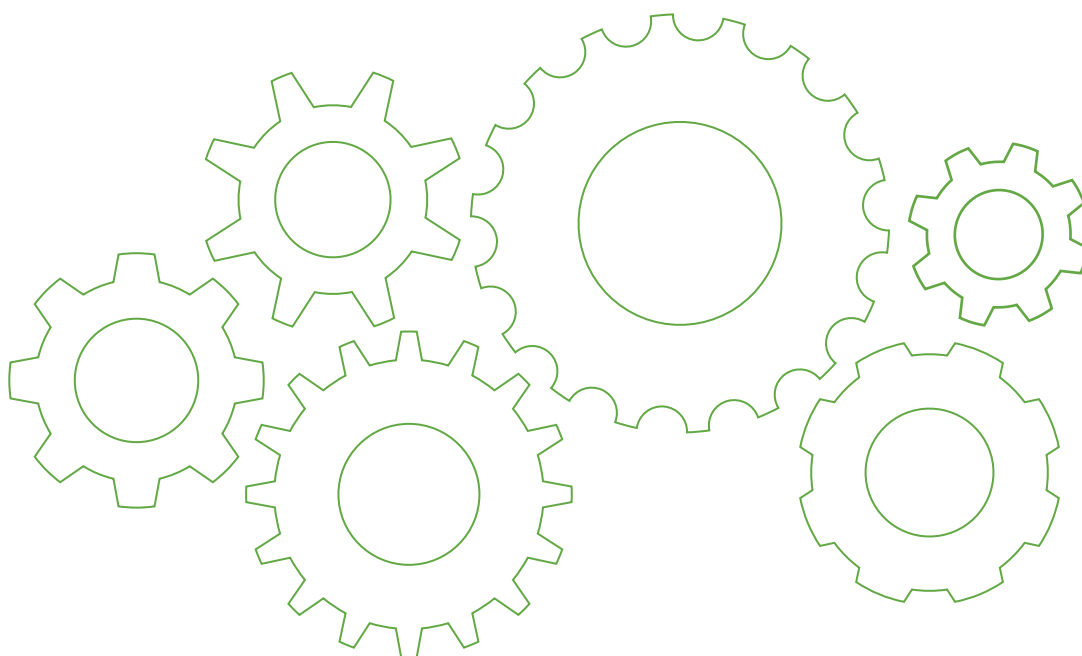
Powder coated steel. Foot operated. Quite-Close™ Lid.



### Stainless IV Pole

Low center of gravity and welded base and pole for extra stability needed for heavy loads. Slow descent inner pole prevents inadvertent, sudden collapse of the pole, yet yields easily to upward movement. Round screw knob locks the pole into position. Premium 3" hard rubber casters with ball bearings. Powder-coated base with epoxy enamel in hospital white to resist scratches. Stainless steel upper pole. Adjusts from 68" to 99" H.

**ADDITIONAL ITEMS:** We sell both new and pre-owned stainless and other operating room furniture for all your needs. Please contact us at: [direct@centurionservice.com](mailto:direct@centurionservice.com) for additional information.





## Instruments

To order, contact us at 708-761-6655 or [direct@centurionservice.com](mailto:direct@centurionservice.com)  
Items subject to availability.



### DC Tray

#### INCLUDES:

- 1 Weighted Vaginal Speculum Auvarde blade 2.75" x 1.5 x 2lbs
- 1 Vaginal Speculum Sims Double Ended #2: 1 in x 2 3/4 in & 1 1/2 in x 3 1/4 in
- 1 Uterine Dilator Sound Sims Graduated in Centimeters 12.5"
- 1 Uterine Tenaculum Forceps Schroeder Tenaculum (Single tooth) 10"
- 1 Forceps Sponge Foerster Straight 9.5" Serrated
- 1 Uterine Tenaculum Forceps Gordon Vulsellum 8.75"
- 1 Scissors Mayo Curved 6.75"
- 1 Uterine Dilator Pratt (set of 8)
- 1 Uterine Curette Sims Size 1, 11"
- 1 Uterine Curette Sims Size 2, 11"
- 1 Uterine Curette Sims Size 3, 11"
- 1 Uterine Curette Sims Size 4, 11"
- 1 Forceps Dressing Serrated 6"
- 1 Forceps Russian 7.75"
- 1 Forceps Tissue 6" with Serration 1x2 teeth
- 1 Scissors Mayo Straight 6.75"
- 2 Forceps Allis Straight 8"
- 1 Forceps Hemostat Crile Curved 6.5"
- 1 Needle Holder Heaney Curved 8.25"
- 1 Uterine Forceps Bozeman 10"
- 1 Vaginal Retractor Jackson Medium
- 1 Uterine Forceps Fletcher VanDoren Uterine Polyp S-Shape 9.5"
- 1 Kevorkian Endocervical Biopsy Curette, 11"
- 1 Sterilization Casket w/Lid & Basket: 3/4 Size
- \* Please specify brand preference)

\* All items are certified pre-owned. Item(s) brands may vary depending on availability please contact us for specific needs.

Contact for Pricing: [instruments@centurionservice.com](mailto:instruments@centurionservice.com)



### Instrument Base

#### INCLUDES:

- 2 Knife Handle #3 Regular (5")
- 1 Knife Handle #7 Regular 6 1/2"
- 1 Forceps Mosquito Straight
- 4 Forceps Mosquito Straight
- 2 Forceps Hemostat Crile Curved 5.5"
- 2 Forceps Hemostat Crile Straight 5.5"
- 2 Forceps Allis Straight 6"
- 2 Forceps Rochester Pean Curved 6"
- 4 Clamp Towel Backhaus Perforating 5.25"
- 2 Clamp Towel Lorna/Edna 4"
- 1 Scissors Mayo Straight 6.75"
- 2 Needle Holder Crilewood 6"
- 2 Needle Holder Mayo Hegar 6"
- 2 Forceps Adson w/teeth and serration platform
- 2 Forceps Dressing Serrated 6"
- 2 Forceps Tissue 6" with 1x2 teeth
- 2 Retractor Senn Sharp
- 1 Retractor Army/Navy Pair
- 1 Suction Frazier 8fr with Stylet
- 1 Suction Frazier 12fr with Stylet
- \* All items are certified pre-owned. Item(s)
- \* Please specify brand preference

Contact for Pricing: [instruments@centurionservice.com](mailto:instruments@centurionservice.com)





## Add on Package to Base to Complete to a Minor Ortho Tray

### INCLUDES:

- 1 Rongeur Single Action: Customer choice dependent on availability
- 1 Elevator Freer, 4mm Sharp/Blunt tip 7" - 7 3/4"
- 1 Scissors Bandage Lister 7"
- 1 Scissors Mayo Curved 6.75"
- 2 Retractor Rake Volkmann 4 Prong 8.5" Sharp
- 1 Rongeur Double Action: Customer choice dependent on availability
- 2 Knife Handle #4 Regular 5 3/8"
- 2 Forceps Kocher Straight 8"
- 1 Scissors Iris Curved 4.5"
- 1 Scissors Tenotomy Curved 7" blunt
- 1 Scissors Metzenbaum Curved 7"
- 1 Scissor Wire Cutter 4 3/4"
- 1 Forceps Adson without teeth
- 1 Forceps Ferris Smith 7" 1x2 teeth
- 1 Rasp, Foman Double Ended Fine & Coarse teeth 8mm wide OL 8.5"
- 1 Bone Curette Hollow Handle Straight #2 6.5"
- 1 Bone Curette Hollow Handle Straight #0 6.5"
- 2 Retractor Ragnell
- 2 Retractor Senn Blunt
- 1 Elevator Key 1/4"
- 1 Elevator Key 1/2" 250-423 or Similar
- 1 Bone Tamp Cross-serrated tip. Overall length 6-1/4in Tip diameter 10mm
- 1 Pliers Needle Nose / Wire Cutting Forceps
- 1 Mallet Ortho 1lb 7 1/2"
- 2 Retractor Hook, Freer Double 3mm wide 6"
- 2 Hohmann 15mm x 6"
- 2 Hohmann 6mm x 6"
- 1 Elevator Hoen Periosteal 7mm
- 1 Sterilization Casket w/Lid & Basket: 3/4 Size

\* Please specify brand preference

**Contact for Pricing:** [instruments@centurionservice.com](mailto:instruments@centurionservice.com)



## Add on Package to Base to Complete to a Minor Tray

### INCLUDES:

- 2 Forceps Sponge Foerster Straight 9.5" Serrated
- 4 Forceps Babcock Straight 6.25"
- 2 Forceps Hemostat Crile Curved 5.5"
- 2 Forceps Gemini Right Angle 7"
- 2 Forceps Kocher Straight 6.5"
- 1 Scissors Mayo Curved 6.75"
- 1 Scissors Metzenbaum Curved 7"
- 2 Needle Holder Mayo Hegar 7.25"
- 2 Debakey 7.75" Std. 2.0mm tip
- 2 Forceps Russian 7.75"
- 2 Gelpi 7.5"
- 1 Richardson Eastman Dbl End Small 1-1/8" x 3/4" & 1-1/2" x 1-1/8" OL 10"
- 2 Retractor Rake Volkmann 4 Prong 8.5" Sharp
- 1 Suction Yankauer 10.75"
- 1 Richardson Eastman Dbl End large 1-3/4" x 1 1/2" & 2-1/2" x 1-5/8" OL 10"
- 1 Instrument stringer Locking 2.5 x 6"
- 1 Sterilization Casket w/Lid & Basket: 3/4 Size

\* All items are certified pre-owned. Item(s) brands may vary depending on availability please contact us for specific needs.

**Contact for Pricing:** [instruments@centurionservice.com](mailto:instruments@centurionservice.com)



### Laparoscopic Base

#### INCLUDES:

- 1 Retractor Hasson "S" (Pair)
- 2 Laparoscopic 5mm+- Traumatic Grasper 36cm  
\*Please specify brand preference
- 2 Laparoscopic 5mm Atraumatic Grasper 36cm  
\*Please specify brand preference
- 1 Laparoscopic Probe 5mm
- 1 Laparoscopic Suction / Irrigator Customers Choice
- 1 Laparoscopic Decompression aspiration needle 5mm
- 1 Retractor Army/Navy Pair
- 2 Forceps Kelly Curved 5.5"
- 2 Forceps Kocher Straight 6.5"
- 2 Needle Holder Mayo Hegar 6"
- 2 Forceps Adson w/teeth and serration platform BD512R
- 1 Scissors Mayo Straight 6.75"
- 1 Knife Handle #3 Regular (5")
- 1 Knife Handle #7 Regular 6 1/2"
- 1 Forceps Tissue 6" with 1x2 teeth
- 1 DeBakey 7.75" Std. 2.0mm tip
- 4 Forceps Hemostat Crile Curved 5.5"
- 2 Forceps Hemostat Crile Straight 5.5"
- 2 Clamp Towel Lorna/Edna 5.25"
- 2 Clamp Towel Backhaus Perforating 5.25"
- 2 Forceps Sponge Ballenger Straight 7"
- 1 Sterilization Casket w/Lid & Basket: Full Size \*Please specify Brand preference  
\*Please specify brand preference

\* All items are certified pre-owned. Item(s) Brands may vary depending on availability please contact us for specific needs.

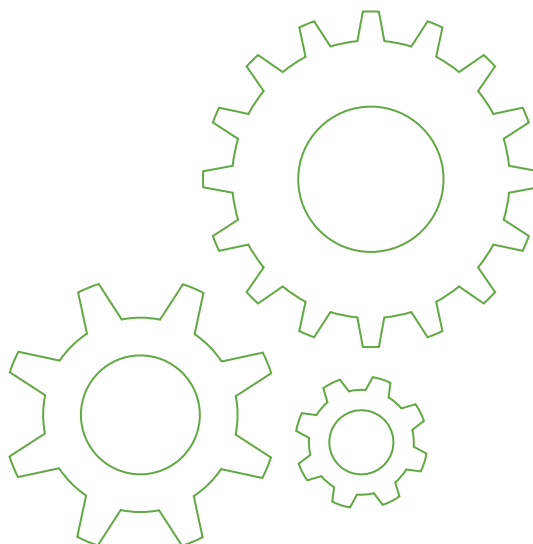
Contact for Pricing: [instruments@centurionservice.com](mailto:instruments@centurionservice.com)

### Add on Package to Complete Base to a Laparoscopic Chole Tray

#### INCLUDES:

- Laparoscopic 5mm Maryland Dissector 36cm  
\*Please specify Brand preference
- Cautery Wands Customers Choice  
\*Please specify Brand preference
- Laparoscopic 10mm Spoon Biopsy Forceps 36cm Spring handle with seal 26173 GS
- Laparoscopic 10mm Claw (Mother in-law) 36cm  
\*Please specify Brand preference
- Uterine Forceps Fletcher VanDoren Uterine Polyp S-Shape 9.5" GL1805
- \*All items are certified pre-owned.

Contact for Pricing: [instruments@centurionservice.com](mailto:instruments@centurionservice.com)





### Extech IR200

Ideal for quickly detecting elevated body temperature using a non-contact design that eliminates the need for replacement probe covers and other supplies. Measures body temperature from 89.6°F to 108.5°F (32.0°C to 42.5°C) without contact. Accurate to 0.5°F (0.3°C) with 0.1°F/°C resolution. Adjustable alarm alerts user visually and audibly when temperature exceeds programmed limit. Optimum measurement distance of 1.9 in. to 5.9 in.



### Welch Allyn SureTemp Plus

A portable thermistor thermometer used for accurately measuring body temperatures at oral, axillary, or rectal sites. The device measures temperature by default in predictive (Normal) mode, during which it uses a predictive algorithm to calculate patient temperature.



### Welch Allyn 767 Integrated Diagnostic Systems

By combining a wall aneroid, ophthalmoscope, otoscope, specula dispenser, and thermometer (optional), Welch Allyn puts all the basic diagnostic tools within easy reach. Handle-based rheostats for quick light-intensity adjustments. Provides the instruments you will need to perform a complete diagnostic examination.



### Welch Allyn 77710

Energy efficient with handle-based rheostats and automatic on/off sensors make operation simple. Help reduce facility cost with a more energy-efficient product. Help reduce cross-contamination by reducing contact with no on/off switch. Help improve workflow with contoured handles that automatically turn on/off.



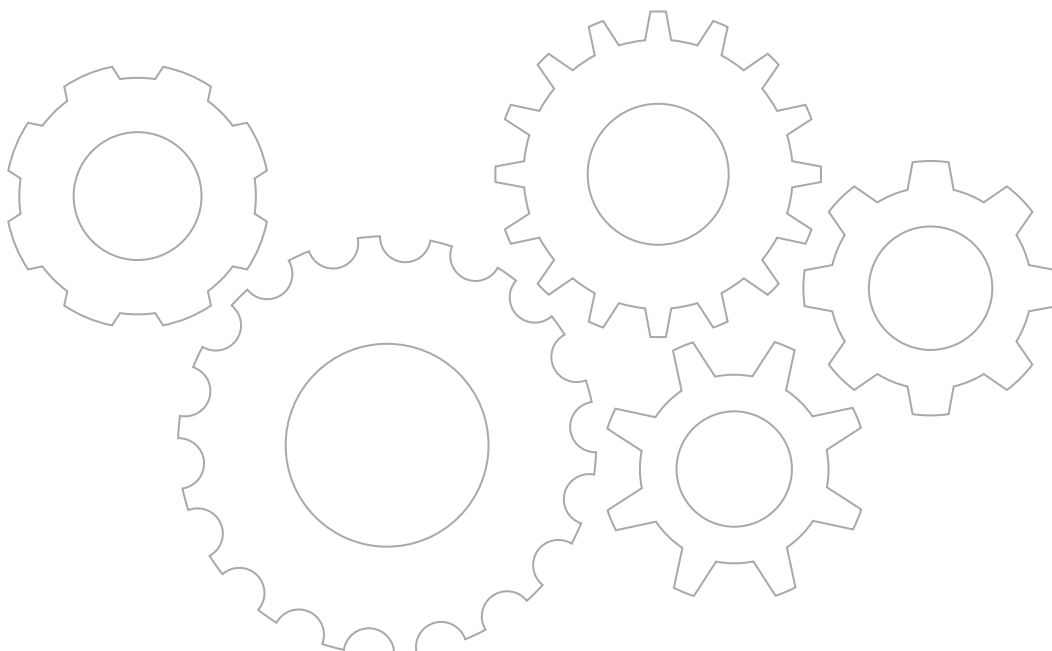
### Welch Allyn 767 Series

Based on Welch Allyn's near century of experience building and designing innovative blood pressure technology, the versatile 767 Aneroid is the smart choice for accurate and reliable readings throughout your facility. Improved ergonomics and a new modern design make for an easy-to-use blood pressure aneroid, developed with staff and facility workflow efficiency in mind. Recessed, laser-engraved dial face with high-contrast pointer provides certified accuracy to reduce errors and improve patient care.



### Welch Allyn Scale-Tronix 5002

With their low-profile platforms designed to reduce fall risks, accurate readings that can help clinicians prescribe correct medication dosages and a variety of models for different patients, it's easy to see why Scale-Tronix is a trusted brand for hospitals. The Scale-Tronix comprehensive line of portable scales is designed to support your wide-ranging patient population anywhere, anytime.







# CENTURION<sup>SM</sup> SERVICE GROUP

A TRIMEDX COMPANY

CHICAGO | PHOENIX | FLORIDA  
DALLAS | COLUMBUS

To view our full line of products, visit us online, or contact a Centurion representative anytime.  
Don't see an item you're looking for? Please call and let us source it for you.

[centurionservice.com](http://centurionservice.com)  
708-761-6655 | [direct@centurionservice.com](mailto:direct@centurionservice.com)

*All company and product names and logos are  
trademarks of their respective holders.  
Use of these names and logos does not imply any  
affiliation with or endorsement or sponsorship by them.*