

Lytec 2020

New Install Guide



March 2020

Copyright notice

Copyright © 2020 eMDs, Inc. All Rights Reserved.

Use of this documentation and related software is governed by a license agreement. This documentation and related software contain confidential, proprietary, and trade secret information of eMDs, Inc., and is protected under United States and international copyright and other intellectual property laws. Use, disclosure, reproduction, modification, distribution, or storage in a retrieval system in any form or by any means is prohibited without the prior express written permission of eMDs, Inc. This documentation and related software is subject to change without notice.

Publication date

March 2020

Product

Lytec®

Corporate address

eMDs
10901 Stonelake Blvd.
Austin, TX 78759
512-257-5200

Table of Contents

Chapter 1 - Lytec Hardware and Software Requirements	1
Lytec 2020 Single-User Hardware and Software Requirements	1
Hardware - Minimum Required	1
Hardware - Recommended	1
Workstation Operating System - Supported	1
Internet - Required	2
Database - Version of SQL	2
Lytec 2020 Professional or Multi-User Hardware and Software Requirements	3
Server Hardware - Minimum Required	3
Server Hardware - Recommended	3
Server Operating System - Recommended	3
Server Operating System - Supported	3
Workstation Hardware - Minimum Required	4
Workstation Hardware - Recommended	4
Workstation Operating System - Supported	4
Lytec 2020 Client/Server Hardware and Software Requirements	5
Server Hardware - Minimum Required	5
Server Hardware - Recommended	5
Server Operating System - Recommended	5
Server Operating System - Supported	5
Workstation Hardware - Minimum Required	6
Workstation Hardware - Recommended	6
Workstation Operating System - Supported	6
Lytec 2020 Supported Operating Systems	7
Revenue Management	7
McKesson Practice Interface Center System Requirements	8
Hardware requirements	8
Software requirements	8
Lytec MD 2020 Supported Operating Systems	9
Lytec MD Best Practices	10
Lytec 2020 Installation Overview	12
Chapter 2 - Lytec Single-User Installation	13
Before You Begin	13
Important Installation note	13
Prior to Installation	13
Linking to Other Applications	14
Installation	14
Chapter 3 - Lytec Professional or Multi-User Installation	17
Before You Begin	17
Important Installation note	17
Prior to Installation	17
Linking to Other Applications	18
Overview	18
Server Installation and Setup	18

Installing on the Server	18
Workstation Installation and Setup	21
Chapter 4 - Lytec Client/Server Installation.	23
Before You Begin	23
Installing on a Domain Controller	23
Prior to Installation.	23
Linking to Other Applications.	24
Overview	24
Server Installation and Setup	24
Installation.	24
Workstation Installation and Setup	27
Chapter 5 - Lytec MD Installation	29
Installing on a Domain Controller	29
Installing Clinical Quality Measures.	29
Lytec MD Installation Checklist	29
Server Preparation	30
Prior to Installation	30
Pre-installation Requirements.	30
Download the License File for Lytec MD version.	31
To Download Your New License File	31
The license file will be downloaded immediately to your machine. Click the Request a license file for installation link.	31
To Install Your License File for Lytec MD	31
Lytec MD Server Installation	32
Installation.	32
Workstation Installation and Setup.	38
Upgrading to eMDs Prescribe	40
eMDs Prescribe migration process	41
Transferring data to the eMDs system.	46
Chapter 6 - Post Installation Setup	57
Specifying the Default SQL Server Credentials.	57
New Practice.	57
Appendix A - Uninstalling SQL Management Studio Express 2005	59
Appendix B - Setting Permissions for the Lytec MD Root Drive and Folders	61
Appendix C - Add-Ons.	65
Installing Add-Ons	65
Appendix D - McKesson Practice Interface Center	67

Chapter 1 - Lytec Hardware and Software Requirements

This chapter identifies the hardware and software requirements for this release.

Lytec 2020 Single-User Hardware and Software Requirements

Hardware - Minimum Required

CPU Type	Intel Pentium IV 4.2GHz or faster
RAM (Memory)	2GB
Storage Space available	4GB*
Optical Drive	DVD-ROM (required if installing from a CD)
Network Card (NIC)	100Mbps
Display Monitor	1024x768 (1280x800 for widescreen displays)

Hardware - Recommended

CPU Type	Pentium D 2.6GHz or faster
RAM (Memory)	8GB
Storage Space available	8GB*
Optical Drive	DVD-ROM (required if installing from a CD)
Network Card (NIC)	1Gbps
Display Monitor	1024x768 (1280x800 for widescreen displays)

*Your database will grow as you add data to your practice, increasing the amount of space needed on the hard drive.

Workstation Operating System - Supported

- Windows 8 Professional/Enterprise (32 or 64 Bit)
- Windows 10 Pro/Enterprise (Windows 10 S and Home are NOT supported)

Internet - Required

High-speed Cable, DSL, or Satellite Internet service.

Database - Version of SQL

Lytec Single User version uses SQL Server Express. With this application, the size of your database is limited to 10GB. SQL Server 2012 SP2 Express will use, at most, 1GB of RAM.

Lytec 2020 Professional or Multi-User Hardware and Software Requirements

Server Hardware - Minimum Required

CPU Type	Intel Pentium IV 4.3GHz or faster
RAM (Memory)	2GB
Storage Space available	6GB*
Optical Drive	DVD-ROM (required if installing from a CD)
Network Card (NIC)	100Mbps
Display Monitor	1024x768 (1280x800 for widescreen displays)

Server Hardware - Recommended

CPU Type	Core 2 - 2.4GHz or faster
RAM (Memory)	8GB
Storage Space available	8GB*
Optical Drive	DVD-ROM (required if installing from a CD)
Network Card (NIC)	1Gbps
Display Monitor	1024x768 (1280x800 for widescreen displays)

*Your database will grow as you add data to your practice, increasing the amount of space needed on the hard drive.

Server Operating System - Recommended

- Windows Server 2016 Standard

Server Operating System - Supported

- Windows 8 Professional/Enterprise (32 or 64 Bit)
- Windows Server 2012 (64 Bit)
- Windows Server 2012 R2 (64 Bit)
- Windows Server 2016 Standard (64 Bit), Datacenter, Essentials
- Windows Server 2019 Standard
- Windows 10 Professional/Enterprise (Windows 10 S and Home are NOT supported)

Network - Recommended

Consult with a licensed network vendor for proper wiring for your business computing environment. Wireless networks are not recommended. If a wireless network is the only option, eMDs requires

the use of Terminal Services/RDP/ Thin Clients and does not support a direct connected wireless workstation.

Internet - Required

High-speed Cable, DSL, or Satellite Internet service.

Database - Version of SQL

Uses SQL Server 2012 SP2 Express. With this application, the size of your database is limited to 10GB. In addition, SQL Server 2012 R2 Express will use, at most, 1GB of RAM.

Workstation Hardware - Minimum Required

CPU Type	Intel Pentium IV 2GHz or faster
RAM (Memory)	2GB
Storage Space available	6GB*
Optical Drive	DVD-ROM (required if installing from a CD)
Network Card (NIC)	100Mbps
Display Monitor	1024x768 (1280x800 for widescreen displays)

Workstation Hardware - Recommended

CPU Type	Intel Pentium IV 2.6GHz or faster
RAM (Memory)	8GB
Storage Space available	8GB*
Optical Drive	DVD-ROM (required if installing from a CD)
Network Card (NIC)	1Gbps
Display Monitor	1024x768 (1280x800 for widescreen displays)

*Your database will grow as you add data to your practice, increasing the amount of space needed on the hard drive.

Workstation Operating System - Supported

- Windows 10 Professional, Enterprise (Windows 10 S and Home are NOT supported)

Lytec 2020 Client/Server Hardware and Software Requirements

Server Hardware - Minimum Required

CPU Type	Intel Pentium IV 4.3GHz or faster
RAM (Memory)	4GB
Storage Space available	6GB*
Optical Drive	DVD-ROM (required if installing from a CD)
Network Card (NIC)	1Gbps
Display Monitor	1024x768 (1280x800 for widescreen displays)

Server Hardware - Recommended

CPU Type	Core 2 - 2.4GHz or faster
RAM (Memory)	8GB
Storage Space available	8GB*
Optical Drive	DVD-ROM (required if installing from a CD)
Network Card (NIC)	1Gbps
Display Monitor	1024x768 (1280x800 for widescreen displays)

*Your database will grow as you add data to your practice, increasing the amount of space needed on the hard drive.

Server Operating System - Recommended

- Windows Server 2016 Standard

Server Operating System - Supported

- Windows Server 2012 (64 Bit)
- Windows Server 2012 R2 (64 Bit)
- Windows Server 2016 Standard (64 Bit), Datacenter, Essentials
- Windows Server 2019 Standard

Network - Recommended

Consult with a licensed network vendor for proper wiring for your business computing environment. Wireless networks are not recommended. If a wireless network is the only option, eMDs requires the use of Terminal Services/RDP/ Thin Clients and does not support a direct connected wireless workstation.

Internet - Required

High-speed Cable, DSL, or Satellite Internet service.

Database - Version of SQL

Uses SQL Server 2012 SP2 Standard

Workstation Hardware - Minimum Required

CPU Type	Intel Pentium IV 2GHz or faster
RAM (Memory)	4GB
Storage Space available	8GB*
Optical Drive	DVD-ROM (required if installing from a CD)
Network Card (NIC)	100Mbps
Display Monitor	1024x768 (1280x800 for widescreen displays)

Workstation Hardware - Recommended

CPU Type	Core 2 2.4GHz or faster
RAM (Memory)	8GB
Storage Space available	8GB*
Optical Drive	DVD-ROM (required if installing from a CD)
Network Card (NIC)	1Gbps
Display Monitor	1024x768 (1280x800 for widescreen displays)

*Your database will grow as you add data to your practice, increasing the amount of space needed on the hard drive.

Workstation Operating System - Supported

- Windows 10 Professional, Enterprise (Windows 10 S and Home are NOT supported)

Lytec 2020 Supported Operating Systems

OPERATING SYSTEM	SERVER		WORKSTATION	
	Version of Lytec 2020		Version of Lytec 2020	
	Client/Server	Single-User, Professional, or Multi-User	Client/Server	Single-User, Professional, or Multi-User
Windows 10 Professional, Enterprise*	N/A	N/A	Y	Y
Windows Server 2012/2012 R2, 2016 Standard, Datacenter, Essentials			Y	
Windows Server 2019 Standard	Y	N/A		Y
Windows 8 Professional/Enterprise (32 or 64-Bit)	N/A	Y	Y	Y

*Windows 10 S and Home are NOT supported.

Revenue Management

Revenue Management uses Advantage Local Server. Advantage Local Server is limited to a maximum of five concurrent users. If you want to have more than five users accessing Revenue Management at the same time, you will need to upgrade to Advantage Database Server. Contact your Value Added Reseller for more information.

McKesson Practice Interface Center System Requirements

Hardware requirements

CPU (Processor)	Equivalent of Intel Quad Core Xeon 1.6GHz
RAM (Memory)	8GB
Storage Array Type	RAID-1
Optical Drive	DVD-ROM
Network Card (NIC)	1Gbps (cannot be a teamed network card)
Hard Drive	At least 30GB

Software requirements

MPIC must be installed at the same location as your SQL server. It does not need to be installed on any of your workstations. Nor does it have to be dedicated.

You may use a virtual server with MPIC.

With Practice Partner 11.2

- Windows Server 2012 and R2
- Windows Server 2016 Standard, Datacenter, Essentials
- Lytec 2014 SP1 or higher

Lytec MD 2020 Supported Operating Systems

OPERATING SYSTEM	SERVER	WORKSTATION	DATABASE
	Version of Lytec 2020	Version of Lytec 2020	Version of SQL
	Client/Server	Client/Server	SQL Server 2012 Standard Edition
Windows Server 2012 and R2, Windows Server 2016 Standard, Datacenter, Essentials, Windows Server 2019 Standard	Y	Y	Y
Windows 8 Professional or Enterprise 32 or 64-Bit	N/A	Y	N
Windows 10 Professional, Enterprise*	N/A	Y	N

*Lytec MD is NOT supported for Windows 10 Home version for Patient Records and Medical Billing. Windows 10 S is NOT supported.

For a complete list of all system requirements for Lytec MD, see Lytec MD System Requirements in the System Administration and System Requirements section of the Lytec 2020 Documentation page in Salesforce.

Lytec MD Best Practices

eMDs provides both requirements and recommendations for Lytec MD best practices.

Required best practices

The following table lists the required best practices for using Lytec MD.

Topic	Comments
Lytec MD Application Folder	<p>The Lytec MD application folder must be on its own logical partition.</p> <p>The logical drive on your application server must be a drive letter that is not reserved by any workstation (P: is the recommended drive letter).</p> <p>The drive letter where the application folder resides on the application server must be available to be mapped on every Lytec MD computer.</p>
Backups	<p>Backups are required. eMDs recommends a tape rotation with periodic offsite backups.</p> <p>eMDs Lytec MD does not install, support, or maintain backup solutions. This is the responsibility of the customer.</p> <p>eMDs Lytec MD cannot be held responsible for data loss incurred due to incomplete or corrupt backups.</p>
Anti-virus Solutions	<p>An anti-virus solution must be installed with the eMDs-recommended configurations.</p> <p>The application folder and client folder must be excluded from real-time/on-access scanning. eMDs recommends scheduled scans when users are not in the system.</p> <p>Trend Micro and CA eTrust are unapproved anti-virus solutions that may cause instability in the Lytec MD application.</p>
Oracle or SQL Database Platforms	<p>Customers using the Oracle or SQL database platforms must have qualified DBA services. This can be a full-time employee of the organization or a contractor. eMDs does offer a variety of DBA service solutions as additional service contract fees.</p>
Teamed Network Interface Cards	<p>The use of teamed network interface cards (NICs) is not supported.</p>
Domain/Active Directory Infrastructure	<p>Lytec MD requires a domain/Active Directory infrastructure.</p>

Topic	Comments
New Technology File System (NTFS)	NTFS is required due to the necessity to set file permissions.
Microsoft Security	The following Microsoft security features and software must be disabled. <ul style="list-style-type: none">• User Account Control (UAC)• Data Execution Prevention (DEP)• Windows Firewall

Recommended best practices

The following table lists the recommended best practices for using Lytec MD.

Topic	Comments
Windows Pagefile	The Windows pagefile should be on its own disk controller and should be two times the amount of RAM in the machine.
Domain Name Servers (DNS)	DNS should be on the same subnet as the Lytec MD servers.
Hardware	eMDs highly recommends hardware from experienced and trusted vendors such as HP, Dell, and IBM. eMDs strongly discourages White-box servers.
Operating System Partition	Provision enough space on your operating system partition for growth. eMDs recommends 32GB+ for your operating system partition.
Firewalls	Customers should have a hardware-level firewall protecting their network.

Lytec 2020 Installation Overview

This document contains instructions for all versions of Lytec 2020, including Lytec MD. Please carefully review the instructions for your version of Lytec 2020 and hardware and software requirements (see [“Lytec Hardware and Software Requirements” on page 1](#)) before installing the software.

Upgrade to this version of Lytec	Use these instructions
Lytec Single-User	“Lytec Single-User Installation” on page 13.
Lytec Professional or Multi-User	“Lytec Professional or Multi-User Installation ” on page 17.
Lytec Client/Server	“Lytec Client/Server Installation” on page 23.
Lytec MD	“Lytec MD Installation” on page 29.

Chapter 2 - Lytec Single-User Installation

In this chapter, you will learn how to install Lytec for a single-user installation.

Before You Begin

Use an administrator account with full privileges when installing the software.

In some instances, you may have to restart the Lytec installation after the .NET framework is installed. If this occurs, the installation will close after installing .NET. Restart the installation. This situation can occur with older versions of the .NET framework on the PC.

If you are extracting the ISO or webinstall file to the hard drive prior to installing, extract to a folder that is immediately off the root drive and the folder name must be shorter than 8 characters. For example, c:\Install. Do NOT use a long folder name.

Reboot your workstation or server.

Make sure that Windows PowerShell is installed (if installing via webinstall). To see if it is installed, click **Start** and then **Run**. Type Powershell and press ENTER. If Windows PowerShell is not installed, follow the instructions to install. See [“Installing Windows PowerShell” on page 77](#).

Important Installation note

eMDs highly recommends that you install SQL Server 2012 using the automatic process in the Lytec installer. However, if you choose to install SQL Server 2012 manually, you MUST install/enable (depending on your operating system) .NET 3.5 FIRST. Failure to do so will cause issues with eligibility verification.

Prior to Installation

1. If SQL Management Studio Express is installed, uninstall it prior to installing Lytec. For steps to do this, see [“Uninstalling SQL Management Studio Express 2005” on page 59](#).

If you are unsure, follow the steps for uninstalling it. If it does not show up on the list of installed programs, then it is not installed.

2. Make sure your Windows operating system has the latest service pack installed. This will be checked during installation.

Linking to Other Applications

You can link Lytec to certain other applications, such as Practice Partner using McKesson Practice Interface Center (MPIC). Refer to [“McKesson Practice Interface Center” on page 67](#) for more information on MPIC and how to download it.

Note: You must install Lytec prior to installing McKesson Practice Interface Center.

Installation

1. Download the ISO for Lytec MD from the Lytec and Lytec MD Download Links page in Support Center.
2. Extract the ISO and launch autorun.exe. The Installation screen appears. eMDs recommends that you do NOT attempt to install using any of the programs with the extension *.msi, such as Lytec.msi. Doing so may result in failure of the installation. Always use autorun.exe.
3. On the Lytec Installation screen, click **Install Lytec**. The Lytec 2020 Installation – Welcome screen appears. If you are installing on Windows 8.1, you will receive a message that .NET 3.5 must install. Select to install it. You may need to reboot your computer afterward.

Depending on your security settings, if you are installing on the Window 8 platforms, the User Account Control screen appears. click the **Allow** button.

4. Click the **Next** button.
5. The End User License Agreement screen appears. Review the terms of the agreement and click **I accept the agreement**.
6. Click the **Next** button. The Installation Type screen appears. Select the **Lytec Single User – Serial Number Prefix 7500** button.

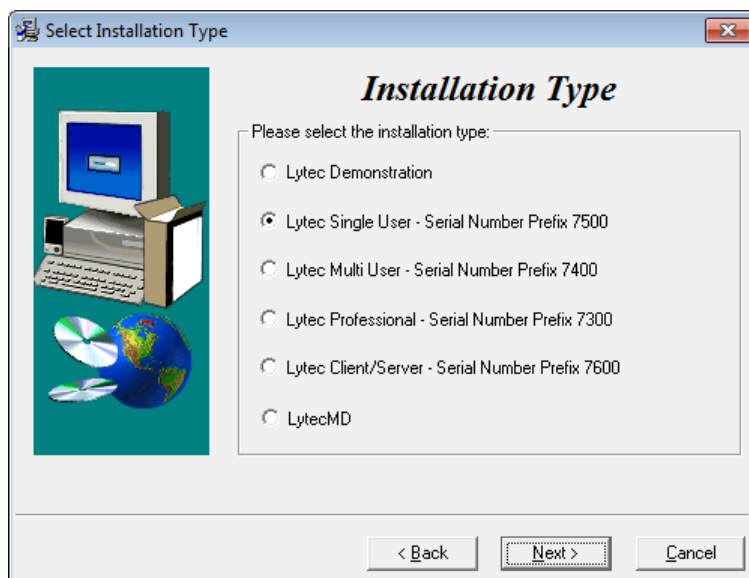
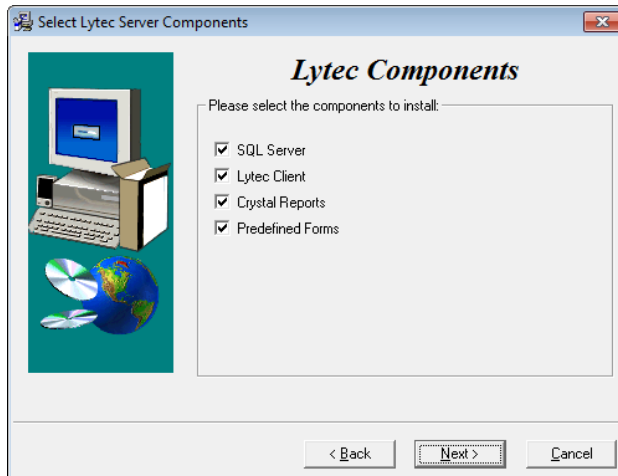


Figure 1. Select Installation Type screen

- Click the **Next** button. The Select Lytec Server Components screen appears. Select which components you want to install.



SQL Server: The database engine used by Lytec.

Lytec Client: Use this Lytec software to enter information for your practice.

Crystal Reports: Use this application to print and generate reports. You must select this check box for a complete installation of Lytec.

Predefined Forms: Forms you can use with Lytec.

Figure 2. Select Lytec Server Components screen

- Click the **Next** button. The Select Target Folder screen appears.
- Click the **Next** button. The Data Folder appears. Either leave the default or click the Browse button to find a different folder.

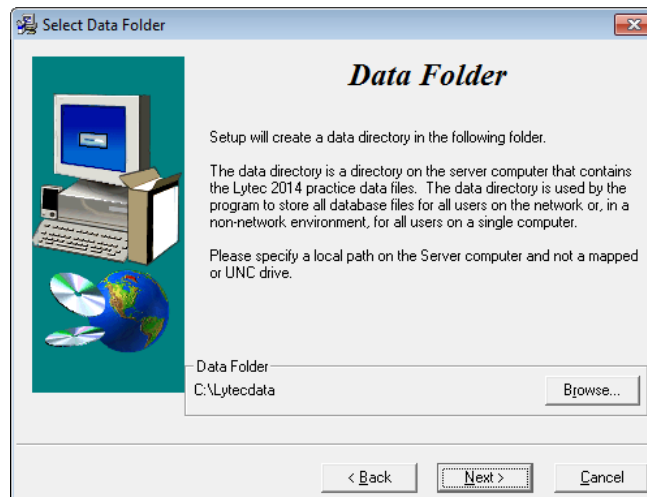


Figure 3. Select Data Folder screen

- Click the **Next** button. The SQL Server Setup screen appears if you selected SQL Server on the Select Components to Install screen. During the installation, Lytec will install SQL Server Express in the Data Folder and use it to manage your practice database. Use this screen to set up the SQL instance that Lytec will use

for its practice database. You will need the information you enter here when you start Lytec and specify the default SQL credentials.

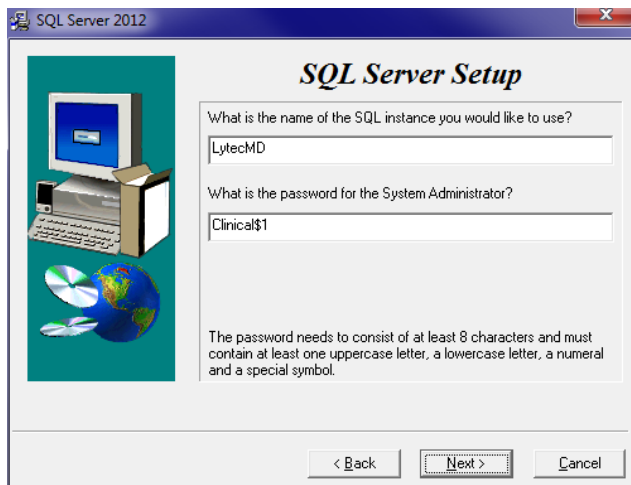


Figure 4. SQL Server Setup screen

Please note the password requirements above. Failure to create a password that meets these requirements WILL cause the installation to fail.

IMPORTANT: For security purposes, eMDs recommends that you change the default shown here to something unique, especially if you have more than one Lytec server on your network.

SQL Server 2012 password requirements:

- The password does not contain all or part of the account name of the user.
- The password is at least eight characters long.
- The password contains characters from three of the following four categories:
 - Latin uppercase letters (A through Z)
 - Latin lowercase letters (a through z)
 - Base 10 digits (0 through 9)
 - Non-alphanumeric characters such as: exclamation point (!), dollar sign (\$), number sign (#), or percent (%).
- Passwords can be up to 128 characters long. You should use passwords that are as long and complex as possible.

11. Click the **Next** button. The Start Installation screen appears.
12. Click the **Next** button. The Installing screen appears and tracks the progress of the install.
13. Reboot the computer when the installation is complete.
14. Start Lytec and register the program.
15. Specify the default SQL server credentials. For step by step instructions, go to [“Specifying the Default SQL Server Credentials” on page 57](#).
16. Create your practice. Follow the steps at [“New Practice” on page 57](#).

Chapter 3 - Lytec Professional or Multi-User Installation

In this chapter, you will learn how to install Lytec for Professional or Multi-User.

Before You Begin

Use an administrator account with full privileges when installing the software.

In some instances, you may have to restart the Lytec installation after the .NET framework is installed. If this occurs, the installation will close after installing .NET. Restart the installation. This situation can occur with older versions of the .NET framework on the PC.

If you are extracting the ISO or webinstall file to the hard drive prior to installing, extract to a folder that is immediately off the root drive and the folder name must be shorter than 8 characters. For example, c:\Install. Do NOT use a long folder name.

Reboot your server or workstation.

Important Installation note

eMDs highly recommends that you install SQL Server 2012 using the automatic process in the Lytec installer. However, if you choose to install SQL Server 2012 manually, you MUST install/enable (depending on your operating system) .NET 3.5 FIRST. Failure to do so will cause issues with eligibility verification.

Prior to Installation

1. If SQL Management Studio Express is installed on your server computer, uninstall it prior to installing Lytec. For steps to do so, see [“Uninstalling SQL Management Studio Express 2005” on page 59](#).

If you are unsure, follow the steps for uninstalling it. If it does not show up on the list of installed programs, then it is not installed.

2. Make sure your Windows operating system has the latest service pack installed. This will be checked during installation.

Linking to Other Applications

You can link Lytec to certain other applications, such as Practice Partner using McKesson Practice Interface Center (MPIC). Refer to [“McKesson Practice Interface Center” on page 67](#) for more information on MPIC and how to download it.

Note: You must install Lytec prior to installing McKesson Practice Interface Center.

Overview

When installing Lytec Professional or Multi-User, first designate a computer as the server. For the purpose of this installation, a server is the computer where your data resides. You must know the name of the server to continue with installation and setup.

A workstation is a computer that you use to run Lytec but does not house the data files. It accesses the data on the server across the network.

There are three major steps for installing Lytec Professional or Multi-User on a network:

1. Install and set up Lytec on the server.
2. Create a new practice.
3. Install and set up Lytec on each workstation.

These instructions take you through each step.

Server Installation and Setup

Installing on the Server

1. Download the ISO for Lytec MD from the Lytec and Lytec MD Download Links page in Support Center.
2. Extract the ISO and launch autorun.exe. The Installation screen appears. eMDs recommends that you do NOT attempt to install using any of the programs with the extension *.msi, such as Lytec.msi. Doing so may result in failure of the installation. Always use autorun.exe.
3. On the Lytec Installation screen, click **Install Lytec**. The Lytec 2020 Installation – Welcome screen appears.

Depending on your security settings, if you are installing on the Windows 8 platforms, the User Account Control screen may appear. Click the **Allow** button.

4. Click the **Next** button. The End User License Agreement screen appears. Review the terms of the agreement and **I accept the agreement**.

- Click the **Next** button. The Installation Type screen appears. Depending on the product purchased, select either the **Lytec Multi User – Serial Number Prefix 7400** button or the **Lytec Professional – Serial Number Prefix 7300** button.

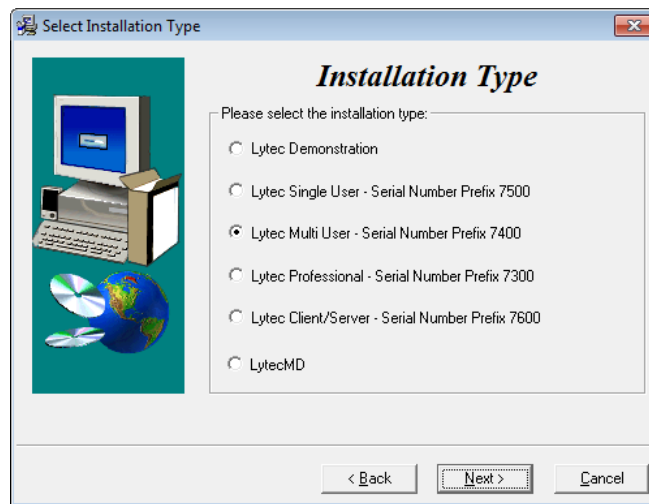


Figure 5. Select Installation Type screen

- Click the **Next** button. The Installation Mode screen appears. Select **Server**.

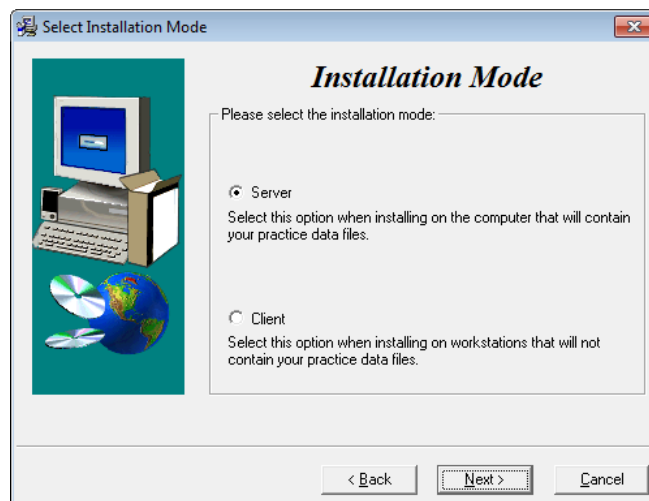
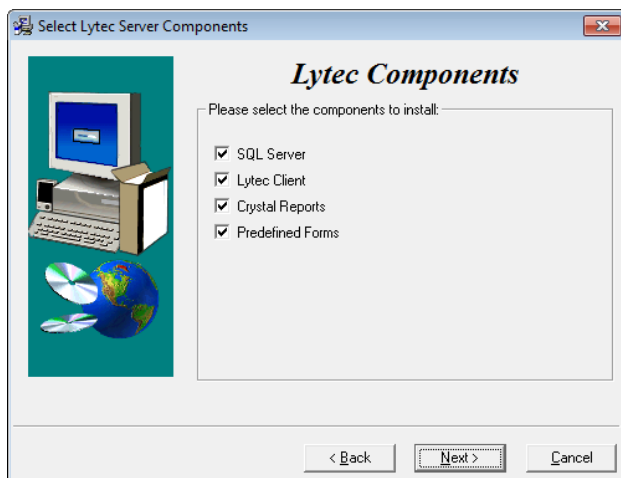


Figure 6. Select Installation Mode screen

7. Click the **Next** button. The Select Lytec Server Components screen appears. Select the components you want to install.



SQL Server: The database engine used by Lytec.

Lytec Client: Use this Lytec software to enter information for your practice.

Crystal Reports: Use this application to print and generate reports. You must select this check box for a complete installation of Lytec.

Predefined Forms: Forms you can use with Lytec.

Figure 7. Select Lytec Server Components screen

8. Click the **Next** button. The Target Folder screen appears.
9. Click the **Next** button. The Data Folder screen appears. Specify the folder on the server where the practice data will be stored.
10. Click the **Next** button. The SQL Server Setup screen appears if you selected the SQL Server check box on the Select Components to Install screen. Enter the name of the SQL instance and the password for the system administrator. You will need this information when you specify the default SQL instance later, both on the server machine and the client workstations.



SQL Server 2012 password requirements:

- The password does not contain all or part of the account name of the user.
- The password is at least eight characters long.
- The password contains characters from three of the following four categories:
 - Latin uppercase letters (A through Z)
 - Latin lowercase letters (a through z)
 - Base 10 digits (0 through 9)
 - Non-alphanumeric characters such as: exclamation point (!), dollar sign (\$), number sign (#), or percent (%).
- Passwords can be up to 128 characters long. You should use passwords that are as long and complex as possible.

Figure 8. SQL Server Setup screen

Please note the password requirements above. Failure to create a password that meets these requirements WILL cause the installation to fail.

IMPORTANT: For security purposes, eMDs recommends that you change the default shown here to something unique, especially if you have more than one Lytec server on your network.

11. Click the **Next** button. The Start Installation screen appears. This screen will tell you what type of installation you are actually performing, so what it says may differ from what appears here.
12. Click the **Next** button. The Installing screen appears and tracks the progress of the install.
13. Reboot the computer when the installation is complete.
14. Start Lytec and specify the default SQL server credentials. For step by step instructions, go to [“Specifying the Default SQL Server Credentials” on page 57.](#)
15. Create your practice. See [“New Practice” on page 57.](#)
16. After you are finished setting up a practice, go to [“Workstation Installation and Setup” on page 21](#) for information on installing and setting up the program on a workstation.

Workstation Installation and Setup

1. Launch autorun.exe. The Lytec Installation screen appears. eMDs recommends that you do NOT attempt to install using any of the programs with the extension *.msi, such as Lytec.msi. Doing so may result in failure of the installation. Always use autorun.exe.
2. On the Lytec Installation screen, click **Install Lytec**. The Lytec 2020 Installation – Welcome screen appears. If you are installing on Windows 8.1, you will receive a message that .NET 3.5 must install. Select to install it. You may need to reboot your computer afterward.
3. Click the **Next** button. The End User License Agreement screen appears. Select **I accept the agreement**.
4. Click the **Next** button. The Installation Type screen appears. Depending on the product purchased, select either the **Lytec Multi User – Serial Number Prefix 7400** button or the **Lytec Professional – Serial Number Prefix 7300** button.
5. Click the **Next** button. The Installation Mode screen appears. Select **Client**.

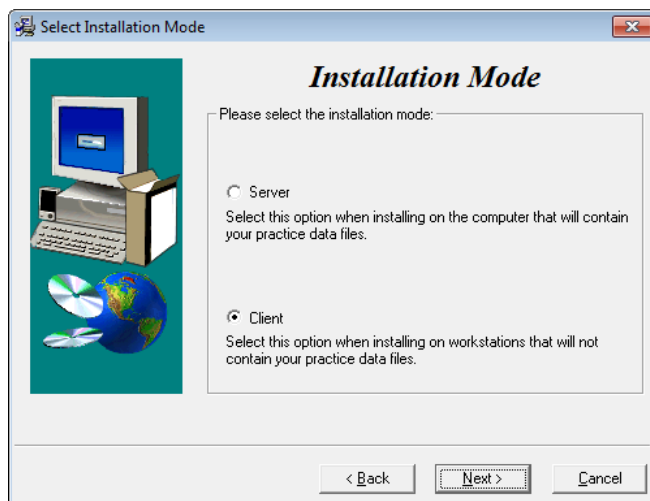
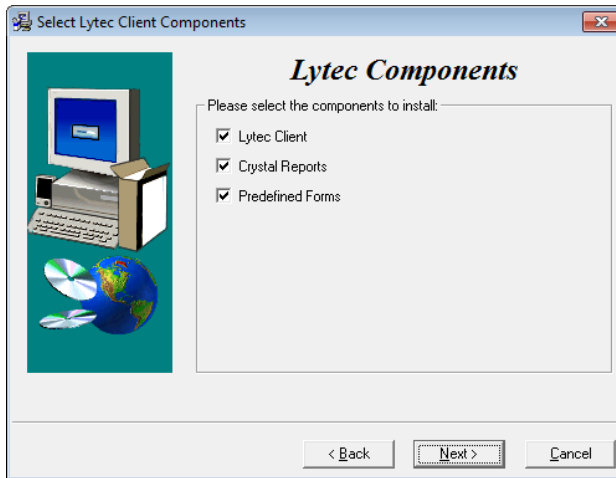


Figure 9. Select Installation Mode screen

- Click the **Next** button. The Select Lytec Client Components screen appears. Select the components you want to install.



Lytec Client: Use this Lytec software that to enter information for your practice. For the client installation, this option is automatically selected.

Crystal Reports: Use this application to print and generate reports. You must select this check box for a complete installation of Lytec.

Predefined Forms: Forms you can use with Lytec.

Figure 10. Select Lytec Client Components screen

- Click the **Next** button. The Target Folder screen appears.
- Click the **Next** button. The Start Installation screen appears.
- Reboot the computer when the installation is complete.
- Repeat these steps for each workstation on which you want to install Lytec.

Chapter 4 - Lytec Client/Server Installation

In this chapter, you will learn how to install Lytec for Client/Server use.

Before You Begin

In some instances, you may have to restart the Lytec installation after the .NET framework is installed. If this occurs, the installation will close after installing .NET. Restart the installation. This situation can occur with older versions of the .NET framework on the PC.

If you are extracting the ISO or webinstall file to the hard drive prior to installing, extract to a folder that is immediately off the root drive and the folder name must be shorter than 8 characters. For example, c:\Install. Do NOT use a long folder name.

If you choose to install SQL Server 2012 manually, you MUST install/enable (depending on your operating system) .NET 3.5 FIRST. Failure to do so will cause issues with eligibility verification.

Reboot your server or workstation.

Installing on a Domain Controller

You no longer need to install SQL Server manually prior to installing Lytec. eMDs recommends that you simply start the installer and allow it to install SQL automatically. You will be prompted for the Domain Administrator Login and Password at the appropriate time in the procedure.

Prior to Installation

1. If SQL Management Studio Express is installed on your server computer, uninstall it prior to installing Lytec. For steps to do so, see [“Uninstalling SQL Management Studio Express 2005” on page 59](#).

If you are unsure, follow the steps for uninstalling it. If it does not show up on the list of installed programs, then it is not installed.

2. Make sure your Windows operating system has the latest service pack installed. This will be checked during installation.

Linking to Other Applications

You can link Lytec to certain other applications, such as Practice Partner using McKesson Practice Interface Center (MPIC). Refer to [“McKesson Practice Interface Center” on page 67](#) for more information on MPIC and how to download it.

Note: You must install Lytec prior to installing McKesson Practice Interface Center.

Overview

For the purpose of this installation, a server is the computer where your data resides and is running either Windows Server 2008* operating system (Standard, or R2), Windows Server 2012, or Windows Server 2016 operating system.

*Support for Windows Server 2008 will be discontinued in 2020.

You must know the name of the server to continue with the installation and setup. A workstation is a computer that you use to run Lytec but does not store data. It accesses data on the network server.

There are three major steps for installing Lytec Client/Server:

1. Install and set up Lytec on the server.
2. Create a new practice.
3. Install and set up Lytec on each workstation.

These instructions take you through each step.

Server Installation and Setup

Perform the server installation on a computer with a supported server operating system (Windows Server 2008,* Windows Server 2012, or Windows Server 2016) using an administrator account with full privileges.

*Support for Windows Server 2008 will be discontinued in 2020.

Installation

1. Download the ISO for Lytec MD from the Lytec and Lytec MD Download Links page in Support Center.
2. Extract the ISO and launch autorun.exe. The Installation screen appears. eMDs recommends that you do NOT attempt to install using any of the programs with the extension *.msi, such as Lytec.msi. Doing so may result in failure of the installation. Always use autorun.exe.
3. On the Lytec Installation screen, click **Install Lytec**. The Lytec 2020 Installation – Welcome screen appears.

4. Click the **Next** button. The End User License Agreement screen appears. Review the terms of the agreement and click **I accept the agreement**.
5. Click the **Next** button. The Installation Type screen appears. Select the **Lytec Client Server – Serial Number Prefix 7600** button.

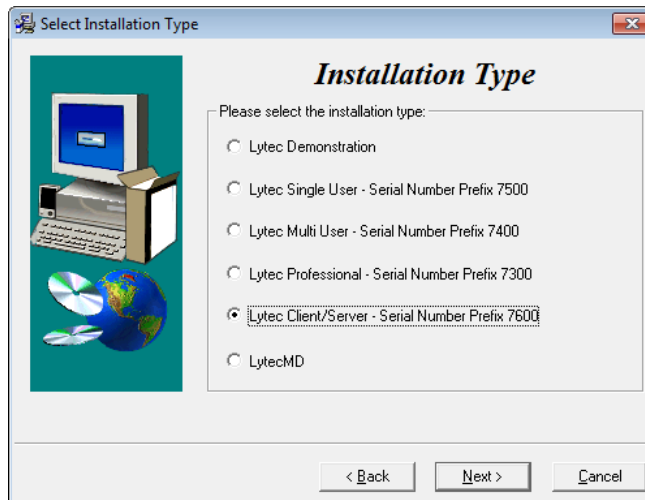


Figure 11. Select Installation Type screen

6. Click the **Next** button. The Installation Mode screen appears.
7. Select the **Server** button.

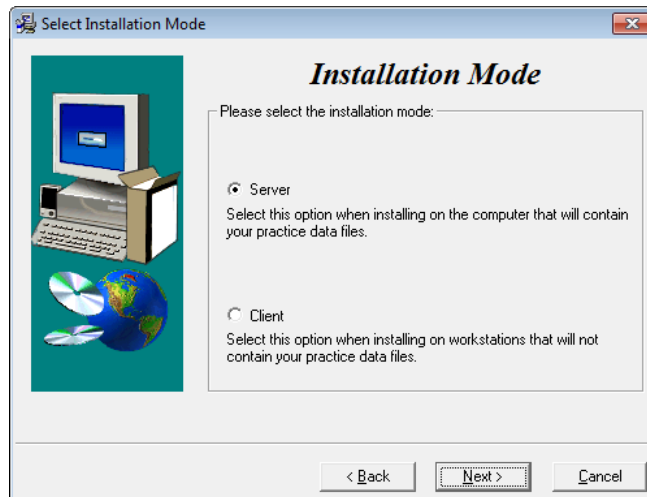


Figure 12. Select Installation Mode screen

8. Click the **Next** button. The Select Lytec Server Components screen appears. Make your selections.

9. Click the **Next** button.

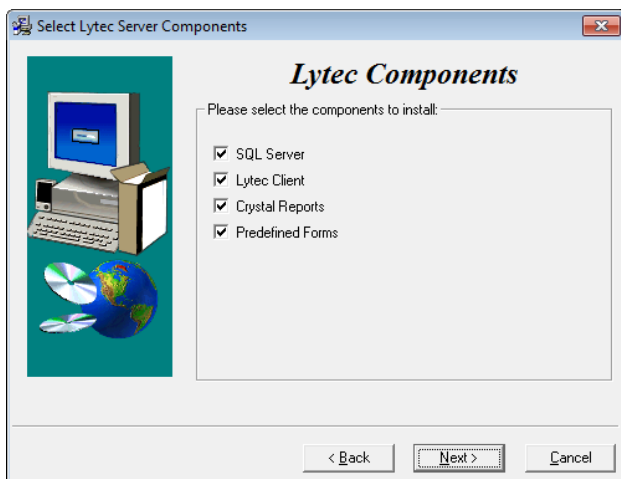


Figure 13. Select Lytec Server Components screen

10. Click the **Next** button. The Select Target Folder screen appears.
11. Click the **Next** button. The Data Folder screen appears.
12. Click the **Next** button. The SQL Server Setup screen appears if you selected SQL Server on the Select Components to Install screen. Enter the name of the SQL instance and the password for the system administrator. You will need this information when you specify the default SQL instance later, for the server database and the client computers.

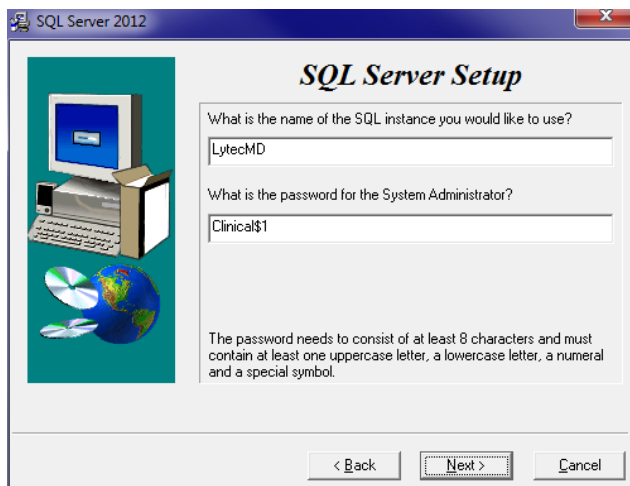


Figure 14. SQL Server Setup screen

Please note the password requirements above. Failure to create a password that meets these requirements WILL cause the installation to fail.

IMPORTANT: For security purposes, eMDs recommends that you change the default shown here to something unique, especially if you have more than one Lytec server on your network.

13. Click the **Next** button.

SQL Server: The database engine used by Lytec.

Lytec Client: Use this Lytec software to enter information for your practice.

Crystal Reports: Use this application to print and generate reports. You must select this check box for a complete installation of Lytec.

Predefined Forms: Forms you can use with Lytec.

SQL Server 2012 password requirements:

- The password does not contain all or part of the account name of the user.
- The password is at least eight characters long.
- The password contains characters from three of the following four categories:
 - Latin uppercase letters (A through Z)
 - Latin lowercase letters (a through z)
 - Base 10 digits (0 through 9)
 - Non-alphanumeric characters such as: exclamation point (!), dollar sign (\$), number sign (#), or percent (%).
- Passwords can be up to 128 characters long. You should use passwords that are as long and complex as possible.

NOTE: If you are installing on a domain controller, you will see an additional screen at this point.

Enter your domain name and the login and password. By default, the login will appear. To find the domain name for the computer you are installing Lytec on,

- a. Select **Start**.
 - b. Right-click **(My) Computer** and select **Properties**.
 - c. Select the **Computer Name** tab and the domain name will be listed to the right of Domain. The password will be that of the Domain Administrator (usually it is just "administrator"). If you do not know the password, contact the Domain Administrator.
 - d. Click the **Next** button.
13. Click the **Next** button. The Start Installation screen appears.
 14. Click the **Next** button. The Installing screen appears and tracks the progress of the install.
 15. Reboot the computer when the installation is complete.
 16. Start Lytec and specify the default SQL server credentials. For step by step instructions, go to ["Specifying the Default SQL Server Credentials" on page 57](#).
 17. Create a new practice. See ["New Practice" on page 57](#).
 18. After you are finished setting up a practice, go to ["Workstation Installation and Setup" on page 27](#) for information on installing and setting up the program on a workstation.

Workstation Installation and Setup

1. Launch autorun.exe. The Lytec Installation screen appears. eMDs recommends that you do NOT attempt to install using any of the programs with the extension *.msi, such as Lytec.msi. Doing so may result in failure of the installation. Always use autorun.exe.
2. On the Lytec Installation screen, click **Install Lytec**. The Lytec 2020 Installation – Welcome screen appears. If you are installing on Windows 8.1, you will receive a message that .NET 3.5 must install. Select to install it. You may need to reboot your computer afterward.
3. Click the **Next** button. The End User License Agreement screen appears. Review the terms of the agreement and click **I accept the agreement**.
4. Click the **Next** button. The Installation Type screen appears. Select the **Lytec Client Server – Serial Number Prefix 7600** button.

5. Click the **Next** button. The Installation Mode screen appears. Select the **Client** button.

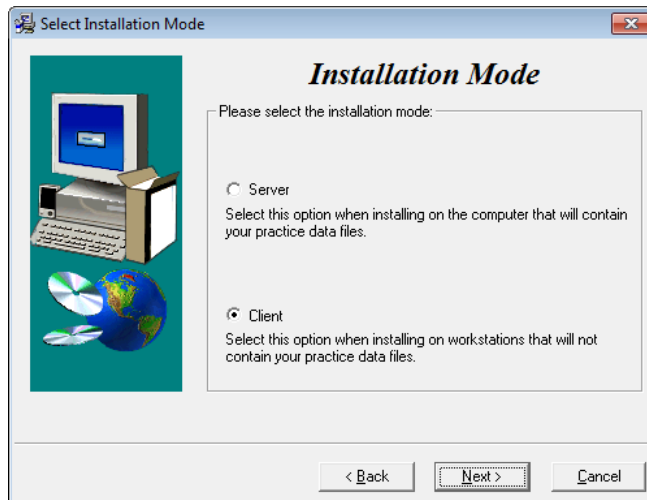
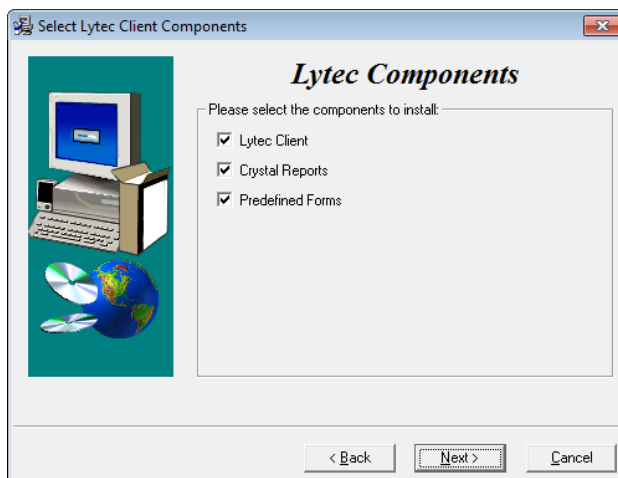


Figure 15. Select Installation Mode screen

6. Click the **Next** button. The Select Components screen appears. Select your components.



Lytec Client: use this Lytec software to enter information for your practice. For the client installation, this option is automatically selected.

Crystal Reports: Use this to print and generate reports. You must select this check box for a complete installation of Lytec.

Predefined Forms: Forms you can use with Lytec.

Figure 16. Select Lytec Client Components screen

7. Click the **Next** button. The Target Folder screen appears.
8. Click the **Next** button. The Start Installation screen appears.
9. Click the **Next** button. Let the installation complete.
10. Reboot the computer when the installation is complete.
11. Repeat these steps for each workstation on which you want to install Lytec.

Chapter 5 - Lytec MD Installation

In this chapter, you will learn how to install Lytec MD.

Installing on a Domain Controller

eMDs recommends that you simply start the installer and allow it to install SQL automatically. You will be prompted for the Domain Administrator Login and Password at the appropriate time in the procedure.

However, if you choose to install SQL Server 2012 manually, you MUST install/enable (depending on your operating system) .NET 3.5 FIRST. Failure to do so will cause issues with eligibility verification.

Installing Clinical Quality Measures

If you have the 64-bit version of Microsoft Office installed on your computer, a message asks you during installation if you would like to uninstall this version to install Clinical Quality Measures. Clinical Quality Measures is compatible with the 32-bit version of Microsoft Office. eMDs does not recommend uninstalling the current version of Microsoft Office. Instead, install Practice Partner Client and Clinical Quality Measures on a different computer, such as a workstation.

Lytec MD Installation Checklist

The following steps overview the process of installing LytecMD.

Step	Process
1	Set up the server computer and permissions for the folders LytecMD will use. The steps are shown below under “Server Preparation” on page 30 .
2	Download and install your license file for Lytec MD from the Internet. The steps are shown below under “Download the License File for Lytec MD version” on page 31 .
3	Install Lytec MD on the server. Complete the steps in this book for installing Lytec MD on the server. Be sure to complete all the steps in the instructions.
4	Install your client workstations. See the “Workstation Installation and Setup” on page 38 section for step-by-step instructions.

5. Install eMDs Prescribe. Complete the steps in [“To upgrade to eMDs Prescribe for Lytec MD :” on page 41.](#)
6. Configure McKesson Practice Interface Center to link Lytec and Lytec MD. Complete the steps in [“McKesson Practice Interface Center” on page 67](#) of this guide.

Server Preparation

Prior to Installation

- If SQL Management Studio Express is installed on your server computer, uninstall it prior to installing Lytec. For steps to do so, see [“Uninstalling SQL Management Studio Express 2005” on page 59.](#)

If you are unsure, follow the steps for uninstalling it. If it does not show up on the list of installed programs, then it is not installed.

- Make sure your Windows operating system has the latest service pack installed.
- Disable User Access Control (UAC)
In order for the installation to go smoothly and for the client to run on the server, UAC must be disabled. Once it is disabled, you will need to reboot the server for the changes to take effect.

Pre-installation Requirements

1. Ensure that your server and workstations meet the system requirements. See [“Lytec Hardware and Software Requirements” on page 1.](#)
2. Know the name of the server to continue with the installation and setup. A server is the computer where your data resides and is running either Windows Server 2008,* Windows Server 2012, or Windows Server 2016.
*Support for Windows Server 2008 will be discontinued in 2020.
3. Ensure that the logical drive on the application server is a drive letter that is not reserved by any workstation (P: is the recommended drive letter). The drive letter where the application resides on the application server must be available to be mapped to each LytecMD workstation.
4. Map each workstation to the server computer. A workstation is a computer that you use to run Lytec but does not store data. It accesses data on the network server.
5. Create a folder on the server, on the logical drive noted above, for Practice Partner and this folder must be empty (typically, this folder is called Ppart).
6. Create a folder called License on the same server. This is where you place your Practice Partner license file. If you do not have a License folder, see [“Download the License File for Lytec MD version” on page 31.](#)
7. Verify that the correct permissions are established for the root drive (typically P). Users must have full access rights. For instructions on setting or verifying these permissions, see [“Setting Permissions for the Lytec MD Root Drive and Folders” on page 61.](#)

Once you install Lytec MD on your server, you will need to open or add ports on any third party firewall you might use. Refer to the third party's product documentation for instructions. The ports that need to be opened or added to an exception list are as follows:

For this connection type...	Open these ports.
TCP	1433 and 1434
UDP	1434

Download the License File for Lytec MD version

Download your license file from the Internet.

To Download Your New License File

To download your license files:

1. Go to the eMDs Practice Support website at <https://practicesupport.emds.com>.
2. Enter your eMDs Practice Support website username and password.
3. Under **Quick Links** on the left side of the page, click the **Downloads & License Files** link.
4. To download the current (11.0) license file, click the drop-down arrow on the **Download Current Version** button and select **Download License File** from the menu.

To download the previous (9.5.2) license file, click the drop-down arrow on the **Download Current Version** button and select **Download Previous License** from the menu.

The license file will be downloaded immediately to your machine. Click the **Request a license file for installation** link.

To Install Your License File for Lytec MD

1. Create a License folder on the P:\ drive (or whatever drive the ppart folder is on).

To create a License folder:

- a. Click **Start**, point to All Programs, point to Accessories, and then click **Windows Explorer**.
 - b. Browse to the P:\ drive (or whatever drive the ppart folder is on).
 - c. Create a new folder by right-clicking a blank area in a folder screen or on the desktop, pointing to New, and then clicking Folder.
 - d. Rename the default folder to License, and then press ENTER.
2. Save the files attached to the email into the License folder (usually P:\license). One of the files will be named "pplic.txt". If this file doesn't exist (because some Email programs strip this file), please save the other file in the License folder and rename it to "pplic.txt".

Important: Make sure to review the Patch Release Notes documents for any necessary database changes. The Patch Release Notes documents are available on the Lytec 2020 Documentation page in Salesforce.

Lytec MD Server Installation

Follow the instructions below to install Lytec MD on your server computer. You must perform the server installation on a computer with a supported server operating system (Windows Server 2008,* Windows Server 2012, or Windows Server 2016) using an administrator account with full privileges.

*Support for Windows Server 2008 will be discontinued in 2020.

There are some conditions that will require a reboot during or after installation. Those are:

- Windows Installer 4.5 is not previously installed on the workstation/server where Lytec is being installed;
- .NET Framework 4 is not previously installed on the workstation/server where Lytec is being installed

Installation

1. Download the ISO for Lytec MD from the Lytec and Lytec MD Download Links page in Support Center.
2. Extract the ISO and launch autorun.exe. The Installation screen appears. eMDs recommends that you do NOT attempt to install using any of the programs with the extension *.msi, such as Lytec.msi. Doing so may result in failure of the installation. Always use autorun.exe.
3. On the Lytec Installation screen, click **Install Lytec**. The Lytec 2020 Installation – Welcome screen appears.
4. Click the **Next** button. The End User License Agreement screen appears. Review the terms of the agreement and click **I accept the agreement**.

5. Click the **Next** button. The Installation Type screen appears. Select the **Lytec MD** button.

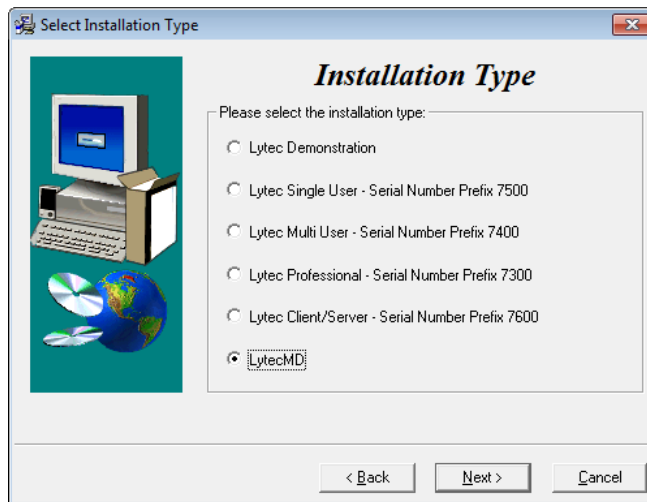


Figure 17. Select Installation Type screen

6. Click the **Next** button. The Installation Mode screen appears.
7. Select **Server**.

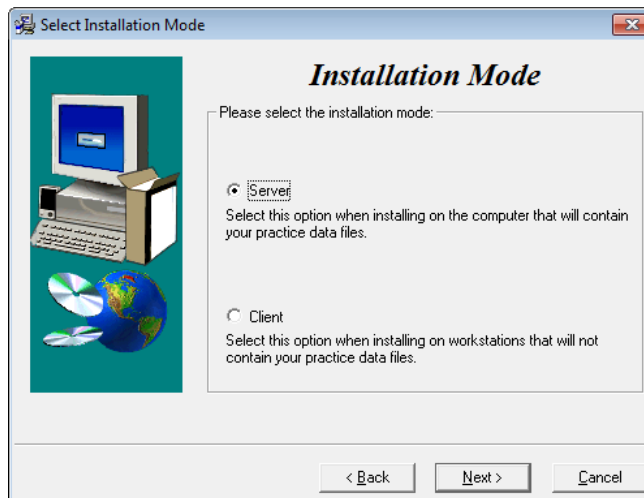


Figure 18. Select Installation Mode screen

8. Click the **Next** button. The Select Lytec Server Components screen appears. Make your selections (if you are unsure, leave the default settings).

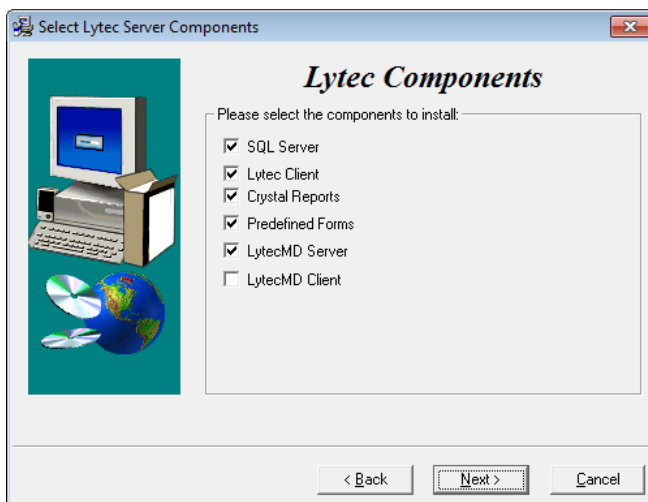


Figure 19. Select Lytec Server Components screen

9. Click the **Next** button. The Target Folder screen appears.

Note: You will see this screen **ONLY** if you selected Lytec Client on the Lytec Components screen.

10. Click the **Next** button. The Data Folder screen appears. This is the folder where the practice data files will be stored on the server.
 11. Click the **Next** button. The SQL Server Setup screen appears.

For security purposes, eMDs recommends that you change the default shown here to something unique, especially if you have more than one Lytec server on your network.

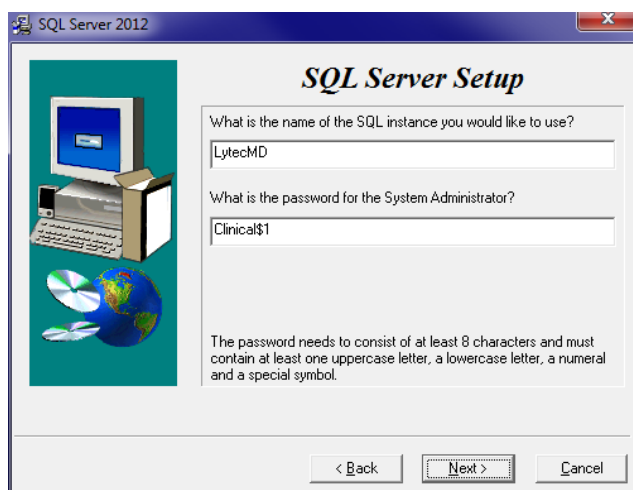


Figure 20. SQL Server Setup screen

Note the password requirements above. Failure to create a password that meets these requirements **WILL** cause the installation to fail.

SQL Server: The database engine used by Lytec

Lytec Client: Use this Lytec software to enter information for your practice.

Crystal Reports: Use this application to generate and print reports. You must select this check box for a complete installation of Lytec.

Predefined Forms: Forms you can use with Lytec.

LytecMD Server: This is the software that goes on the server computer to run Practice Partner. It is **ONLY** installed during the Server installation.

LytecMD Client: This is the Practice Partner program.

SQL Server 2012 password requirements:

- The password does not contain all or part of the account name of the user.
- The password is at least eight characters long.
- The password contains characters from three of the following four categories:
 - Latin uppercase letters (A through Z)
 - Latin lowercase letters (a through z)
 - Base 10 digits (0 through 9)
 - Non-alphanumeric characters such as: exclamation point (!), dollar sign (\$), number sign (#), or percent (%).
- Passwords can be up to 128 characters long. You should use passwords that are as long and complex as possible.

12. Click the **Next** button.

NOTE: If you are installing on a domain controller, you will see a second screen at this point.

Enter your domain name and the login and password. By default the login will appear. To find the domain name for the computer you are installing Lytec on,

1. Select **Start**.
 2. Right-click **(My) Computer** and select **Properties**.
 3. Select the **Computer Name** tab and the domain name will be listed to the right of Domain. The password will be that of the Domain Administrator (usually it is just "administrator"). If you do not know the password, contact the Domain Administrator.
 4. Click the **Next** button.
14. Click the **Next** button. The Path to License File screen appears. Enter the path on the server to the file (named pplic.txt).

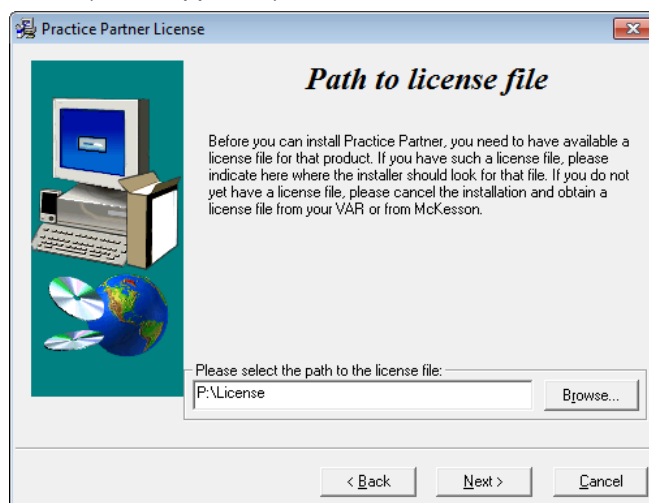


Figure 21. Practice Partner License, Path to License file screen

15. Click the **Next** button. The PP Server Setup screen appears. Specify the location on the computer where you want the Practice Partner Server to be installed. This must be a server drive and be identified by a letter.

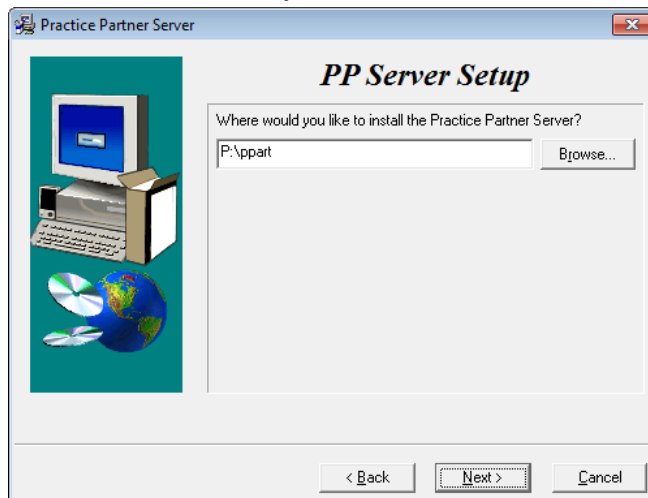
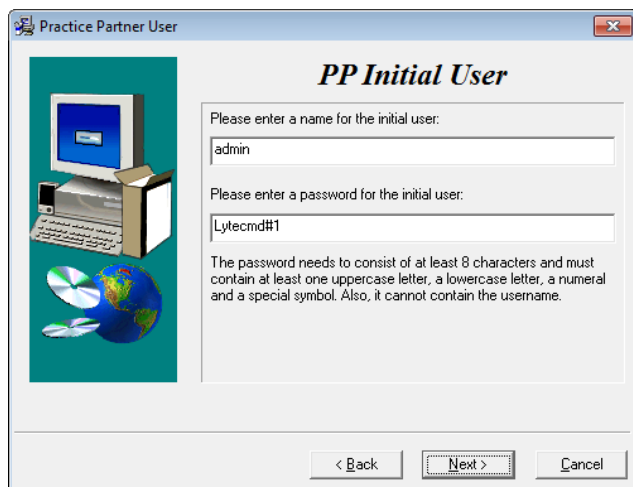


Figure 22. Practice Partner Server Setup screen

16. Click the **Next** button. The PP Initial User screen appears. Write down the name and password of the initial user. You will need this information when you first start and log into Practice Partner.



Your password must be

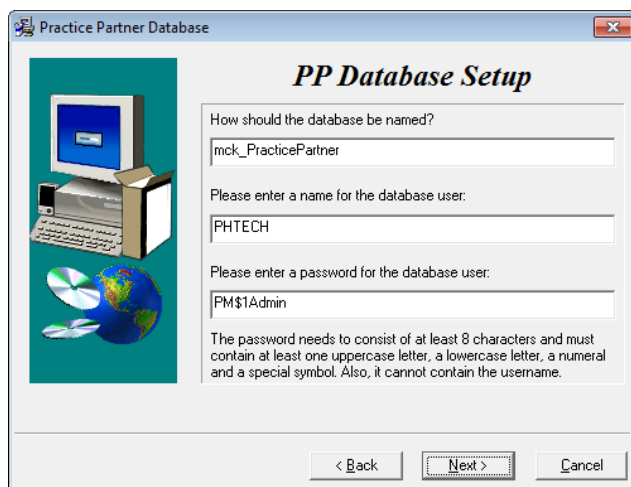
- Between 8 and 16 characters in length and
- Consist of a combination of letters and at least one number and one non-alphanumeric character.
- Cannot be the same as your user name.

The default value shown to the left is the recommended password.

Figure 23. Practice Partner Initial User screen

17. Click the **Next** button. On the PP Database Setup screen, enter the name of the database and a user name and password for the user. This information gives the database a name, user, and password for the Practice Partner database. If you are unsure, leave the defaults for the first two fields and follow the requirements for the password below, make a note of the information.

WARNING: If you are running Windows 2008 Server, you must change the default password on this screen. PM\$1ADMIN will not work. eMDs recommends PM\$1Admin.



Passwords cannot contain the user's account name or parts of the user's full name that exceed two consecutive characters.

Passwords must be at least six characters in length.

Passwords must contain characters from three of the following four categories:

- English uppercase characters (A through Z).
- English lowercase characters (a through z).
- Base 10 digits (0 through 9).
- Non-alphabetic characters (for example, !, \$, #, %).

Figure 24. Practice Partner Database Setup screen

If the current database user (PHTECH) password does not meet the new requirements, you will see a dialog box that will allow you to change the password.

18. Click the **Next** button. The Start Installation screen appears. This screen will tell you what type of installation you are actually performing, so what it says may differ from what appears here.
19. Click the **Next** button. The Installing screen appears and tracks the progress of the install. .
20. Install any Add-Ons to Lytec MD that you want to install. For more information on Add-Ons, see [“Add-Ons” on page 65](#).
21. After you complete your installation and install any Add-Ons, run the Patch Updater Utility. For steps, see [“Upgrading Lytec MD/Practice Partner to release 11.2” on page 37](#).

Upgrading Lytec MD/Practice Partner to release 11.2

The Lytec MD installer installs Lytec MD 2020 with Practice Partner 11.0 To upgrade Lytec MD/Practice Partner to the latest release (11.2), you must first upgrade to release 11.1 by installing all patches and then upgrading to 11.2. Follow these steps:

Install patches to upgrade to 11.1

1. Install ALL of the 2017 patches in order, starting with the 2/2017 cumulative patch, making sure to OMIT the 4/5/2017 client/server patches until there are no more patches left.

NOTE: All of the other pre-2017 patches will be on the list. Do not be alarmed; this is normal.

2. When there are only the 4/5/2017 patches left, install both client/server patches, leaving all the pre-2017 patches uninstalled.
3. Once the Update Manager reboots after installing patches, all of the post-4/5/2017 patches will be available, as you now are pointing to another bucket. You then can install all the remaining patches through current.

NOTE: eMDs recommends that you install the server patches first in order one-by-one post-4/5/2017 patch so that you can verify that the database changes are made without error. The error will be noticeable in the command prompt window but also is recorded in the ppart\logs\MaintenanceEngine.log text file. If you have an error, contact Technical Support.

4. Once the server has updated, you can accept all other patches together by selecting all.

If you plan to use Appointment Scheduler and/or Medical Billing...

1. Obtain the new patching utility. This utility, called **EnableVersion11_2.exe**, has been created for Appointment Scheduler and/or Medical Billing sites to switch to the new 11.2 patching system.
2. Download the utility from the Support website and save it to your ppart folder.
3. Run the utility from the command prompt to make the switch to the new 11.2 patching system. The utility will indicate in the command prompt window if it completed successfully or failed.

If you plan to use Patient Records...

See the instructions for installing eMDs Prescribe: [“To upgrade to eMDs Prescribe for Lytec MD :” on page 41](#).

22. When the installation is complete, start Lytec and specify the default SQL server credentials. For step by step instructions, see [“Specifying the Default SQL Server Credentials” on page 57](#).
23. Follow the steps at [“Upgrading to eMDs Prescribe” on page 40](#) to install eMDs Prescribe.
24. Create your new practice. See [“New Practice” on page 57](#).

Workstation Installation and Setup

1. Disable UAC (User Account Control) prior to installing on each workstation.
2. Launch autorun.exe. The Lytec Installation screen appears.

eMDs recommends that you do NOT attempt to install using any of the programs with the extension *.msi, such as Lytec.msi. Doing so may result in failure of the installation. Always use autorun.exe.
3. On the Lytec Installation screen, click **Install Lytec**. The Lytec 2020 Installation – Welcome screen appears. If you are installing on Windows 8.1, you will receive a message that .NET 3.5 must install. Select to install it. You may need to reboot your computer afterward.
4. Click the **Next** button. The End User License Agreement screen appears. Review the terms of the agreement and click **I accept the agreement**.
5. Click the **Next** button. The Installation Type screen appears.

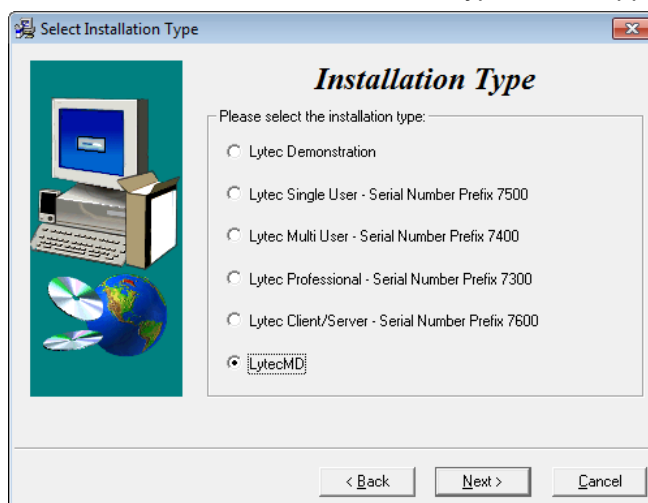


Figure 25. Select Installation Type screen

6. Select the **LytecMD** button and click the **Next** button. The Installation Mode screen appears.

7. Select the **Client** button.

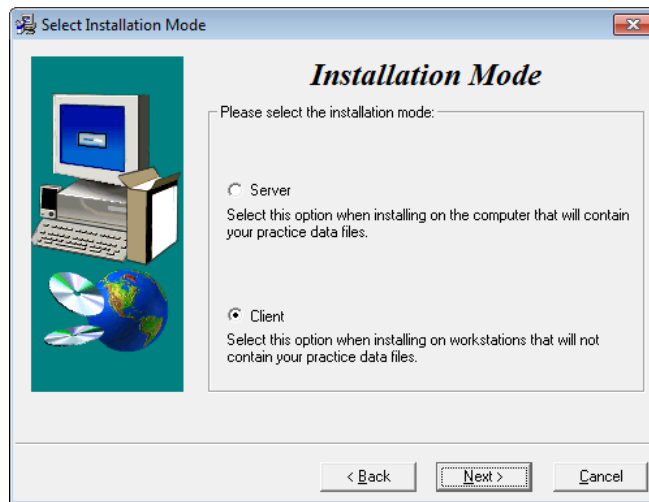


Figure 26. Select Installation Mode screen

8. Click the **Next** button. The Select Lytec Client Components screen appears. Select your components.



Lytec Client: Use this Lytec software to enter information for your practice.

Crystal Reports: Use this application to generate and print reports. You must select this check box for a complete installation of Lytec.

Predefined Forms: Forms you can use with Lytec.

LytecMD Client: This is the LytecMD client software.

Figure 27. Select Lytec Client Components screen

9. Click the **Next** button. The Target Folder screen appears.

10. Click the **Next** button. The PP Client Setup screen appears.

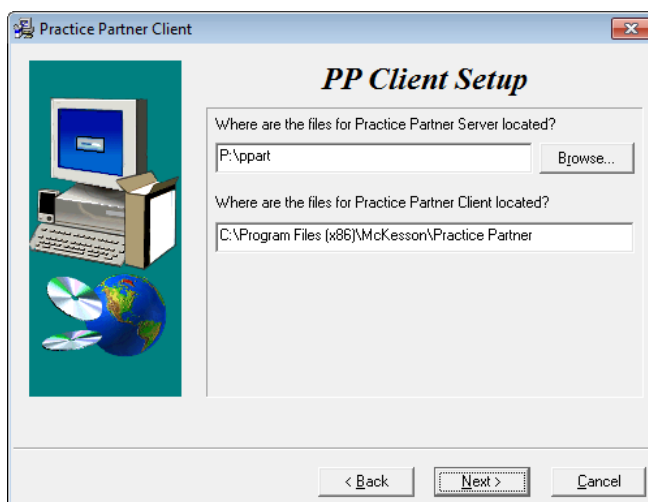


Figure 28. Practice Partner Client screen

Use the Browse button to locate the Practice Partner server files (set up during the Server installation procedure). These files will be on the server computer (typically in P:\ppart). In addition, type in the path where the Practice Partner Client is located. These files will be stored on the client computer.

11. Click the **Next** button. The Start Installation screen appears.
12. Click the **Next** button. Let the installation complete.
13. Install any Add-Ons to Lytec MD that you want to install. For more information on Add-Ons, see [“Add-Ons” on page 65](#).
14. After you complete the upgrade of Lytec MD and any Add-Ons, start Lytec MD from the Start menu. It will automatically install any patches for the client workstation.
15. Repeat these steps for each workstation on which you want to use Lytec MD.
16. Once you have completed installation on all your workstations, configure McKesson Practice Interface Center to transfer data between Lytec and Lytec MD. For more information, see [“McKesson Practice Interface Center” on page 67](#).

Upgrading to eMDs Prescribe

This section lists the steps you must complete to upgrade to eMDs Prescribe for Lytec MD.

eMDs Prescribe migration process

Prerequisite

eMDs recommends that a few days before you plan to perform the migration to eMDs Prescribe, that you run the **CheckProviderSPIAndNPI.exe** utility located in the ppart folder. If the utility is missing from the ppart folder, make sure you have installed all of the latest patches, and if it still is not present in the folder, contact Technical Support.

The **CheckProviderSPIAndNPI.exe** utility performs a check to verify that an SPI associated with a provider is associated with only one practice, that all providers who have an SPI also have an NPI, and that practices do not have duplicate addresses. The utility generates a report called the Migration Readiness Assessment. If any of the checks fails, you will see a list of warning messages indicating the provider(s) or practice(s) you need to fix before you start the migration.

If the report finds no issues in any of the checks, it will report the prescriber and demographics that will be migrated to eMDs Prescribe. Please check this data for accuracy in order to avoid issues when transferring data to the new system.

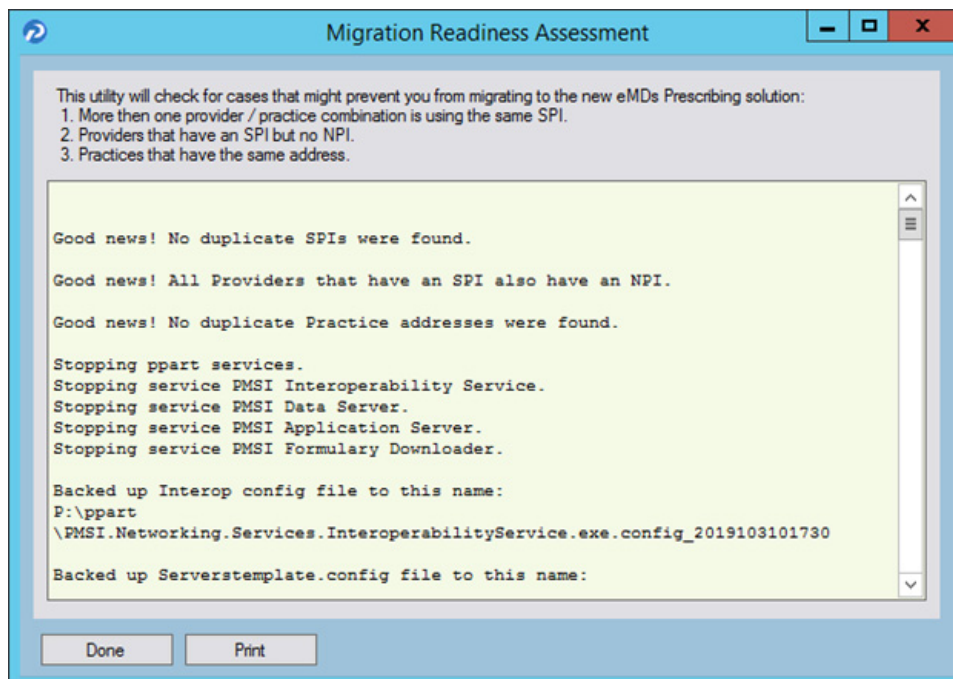


Figure 29. Migration Readiness Assessment

NOTE: If a provider requires a new SPI, you can use the Prescriber Management screen to register for a new SPI after you migrate to eMDs Prescribe. For more information, see the *Electronic Prescribing Registration Process and Setup Guide* and the **Prescriber Management** screen help topic.

To upgrade to eMDs Prescribe for Lytec MD :

Complete the following steps to upgrade to eMDs Prescribe for Lytec MD .

1. Log onto the Practice Support website to download the **MigrateToEmdsRx.exe** utility to your **PPart** folder.
2. Complete each item on the following checklist:

Check off when complete	Task
_____	Approve or deny all refill requests for all providers.
_____	Back up your Lytec MD database and PPart folders.
_____	The process to migrate could take a significant amount of time, depending on the size of your database. Both internal and beta testing have shown that upgrade completion times can exceed 10 hours, during which system access should not be allowed. eMDs recommends that you plan accordingly and allow for ample time for the process to complete.
_____	Understand that once the eMDs Prescribe patches are installed, you CANNOT revert to the previous version of prescription functionality.
_____	Ensure that you are up to date on all patches.
_____	Ensure that the following URLs are added to your trusted sites: https://microservice.emds.com/ https://erx.emdsccloud.com

3. Double-click **MigrateToEmdsRx.exe**. The Migrate to eMDs Prescribe screen appears.

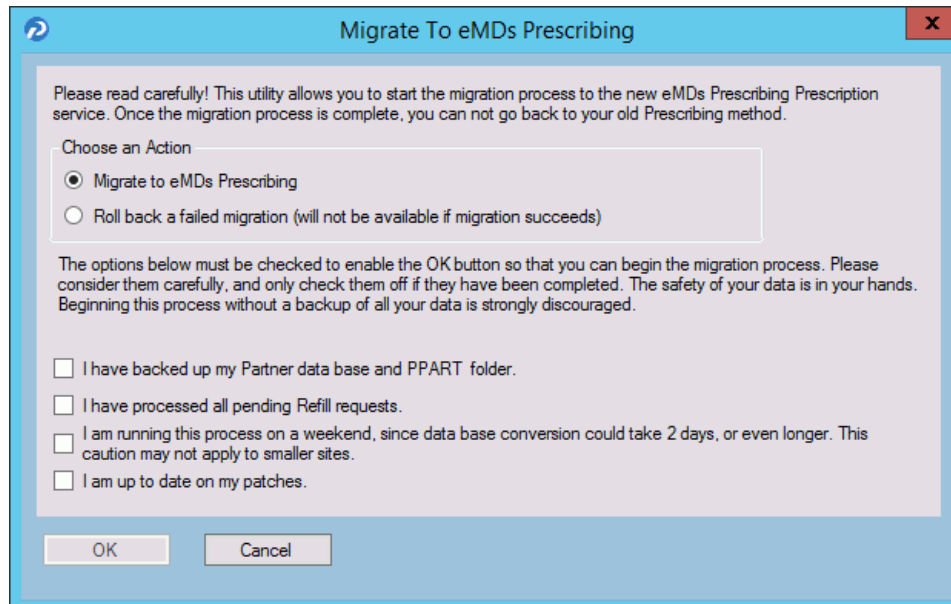


Figure 30. Migrate to eMDs Prescribe screen

4. Select the **Migrate to Emds Prescribing** option, select all check boxes at the bottom of the screen, and click the **OK** button.

If the utility...	Then...
completes successfully	the Launch the Software Update screen appears.
fails to complete	return to the Migrate to Emds Rx screen, select the Roll back a failed migration option, and click the OK button so that you can continue to use electronic prescribing. When you are ready to run the migration again, start at step 2.

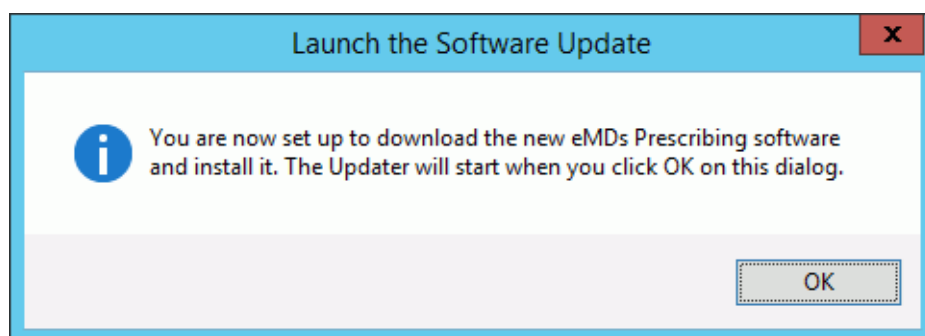


Figure 31. Launch the Software Update screen

5. Click the **OK** button. The Product Update Manager screen appears.

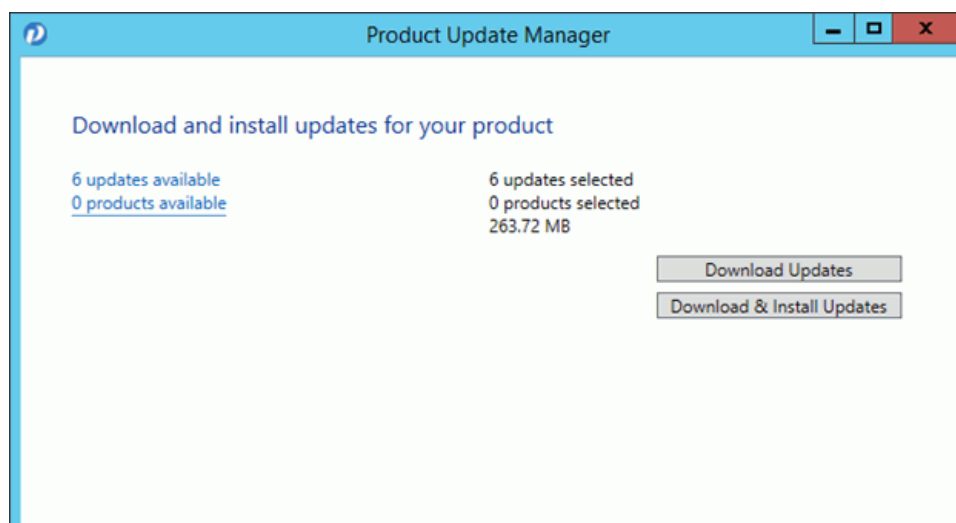


Figure 32. Product Update Manager screen

6. Select all patches and download and install them.

Open a command prompt and change the path to your **ppart** folder, which usually is in the **P:** drive. Execute the command **fixpps.exe ALL**, which is to fix the unique sequence values. If you do not run this step, you may encounter an **Unable to add prescription** error when prescribing a medication.

NOTE: If the patch process fails, contact Technical Support for help resolving the patch failure issue. If the Server Patch completes but there is a failure in the database conversion that cannot be resolved by Technical Support, then a complete system restore will be necessary. After the complete system restore, run the **MigrateToEmdsRx.exe** utility rollback option so that you can ePrescribe on the old system. You can try the migration again at a later date.

Verify that the migration process started all PMSI services. If it did not, attempt to restart the PMSI services yourself. If you are unable to get all PMSI services started, contact Technical Support.

7. Access Patient Records to activate with eMDs Prescribe.
 - a. Select Maintenance > Set Up > **External Systems**. The External Systems screen appears.

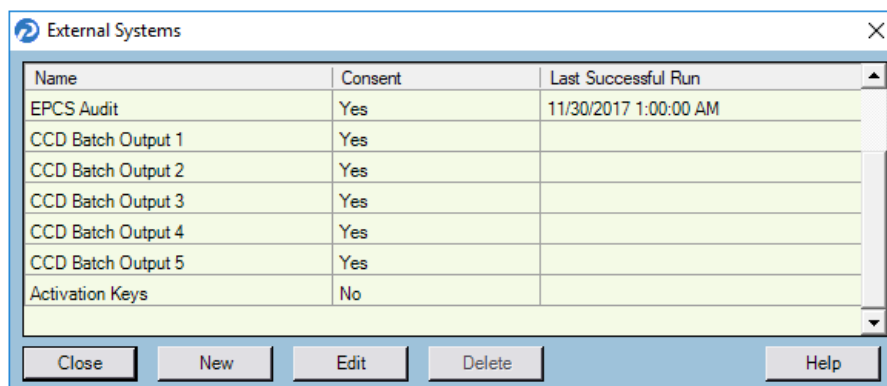
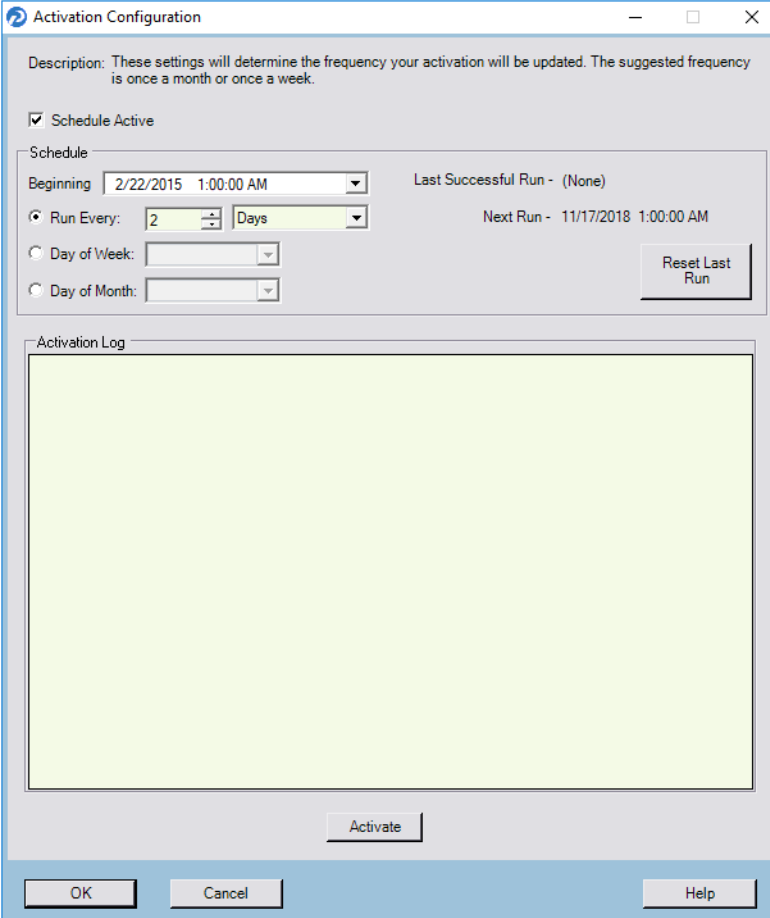


Figure 33. External Systems screen

- b. Select the **Activation Keys** row and click the **Edit** button. The Activation Configuration screen appears.



The image shows the 'Activation Configuration' dialog box. It has a title bar with a question mark icon, a minimize button, a maximize button, and a close button. The main area contains a description: 'Description: These settings will determine the frequency your activation will be updated. The suggested frequency is once a month or once a week.' Below this is a checkbox labeled 'Schedule Active' which is checked. Under the 'Schedule' section, there is a 'Beginning' dropdown set to '2/22/2015 1:00:00 AM', a 'Last Successful Run - (None)' label, and a 'Next Run - 11/17/2018 1:00:00 AM' label. There are three radio buttons: 'Run Every' (selected), 'Day of Week', and 'Day of Month'. The 'Run Every' option has a value of '2' and a unit of 'Days'. There is a 'Reset Last Run' button. At the bottom is an 'Activation Log' section with a large empty text area. At the very bottom are 'OK', 'Cancel', and 'Help' buttons.

Figure 34. Activation Configuration screen

- c. Leave all fields in the **Schedule** area set to their default values and click the **Activate** button.
- d. When activation is complete, information will display in the **Activation Log** area. If activation did not complete, contact Support.
8. Exit Patient Records.
9. Run the **RegisterWithEmdsRX.exe** utility from the **PPart** folder. This utility will download your prescriber demographic data. If there are any mismatches between the data and what is stored in eMDs Prescribe, you must resolve the issues. (If you currently are not using e-Prescribing or are a new customer, you can skip this step since there will be no data to reconcile.)
10. Once the data is reconciled, click the **Register** button to register the customer and sync the information in the Lytec MD system with the data.
11. When the utility completes successfully, you are ready to start using eMDs Prescribe.

Transferring data to the eMDs system

Complete the following steps to transfer your existing data to the new system.

1. In the ppart folder, double-click **RegisterWithEmdsRx.exe**. The Register Customer screen appears.

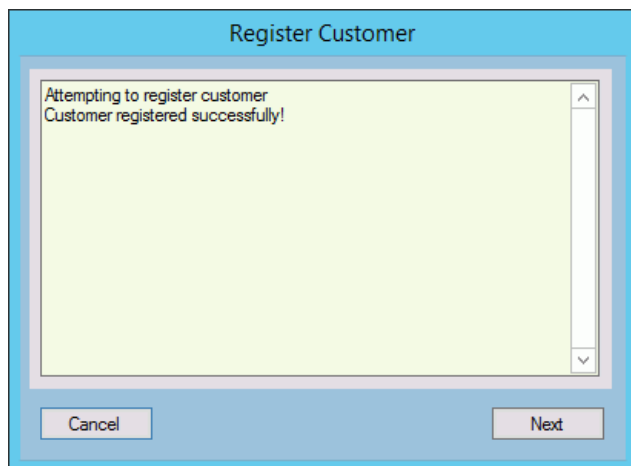


Figure 35. Register Customer screen

2. Click the **Next** button. The Register With eMDs Prescribe screen appears.

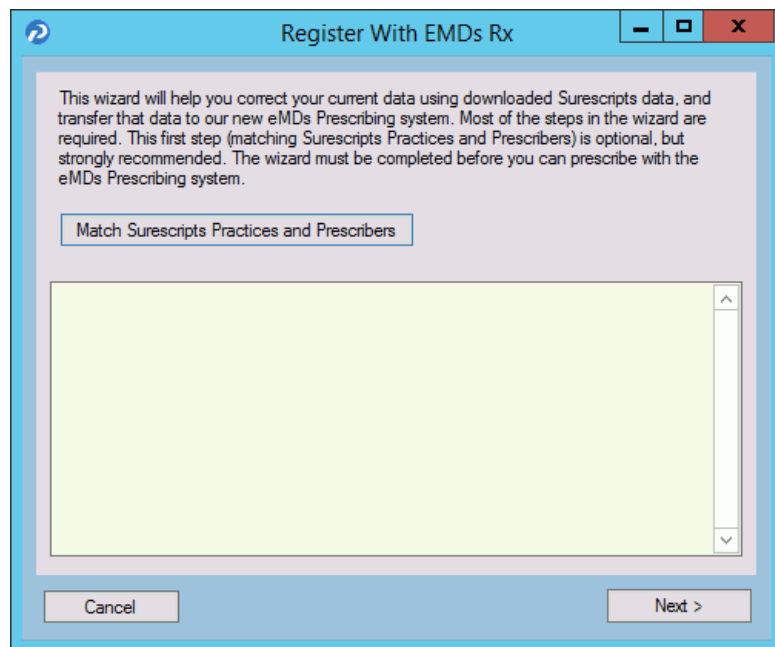


Figure 36. Register With eMDs Rx screen

eMDs strongly recommends that you match Surescripts practices and providers so that you can reconcile any differences you have between your data and the data contained in Surescripts. If you choose not to do so, skip to step 14.

To match Surescripts practices and providers:

- Click the **Match Surescripts Practices and Prescribers** button. The Surescripts Practices screen appears. This screen displays all Lytec MD practices that have data that differs from the data recorded in Surescripts. If no practices are found that require reconciliation, the Surescripts Practices screen will not appear and you can skip to step 8.

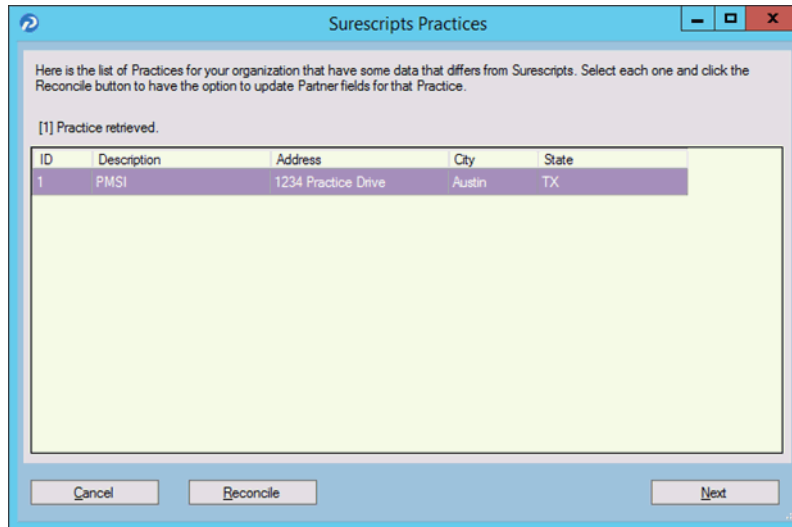


Figure 37. Surescripts Practices screen

- Highlight a practice and click the **Reconcile** button. The Practice Reconciliation screen appears.

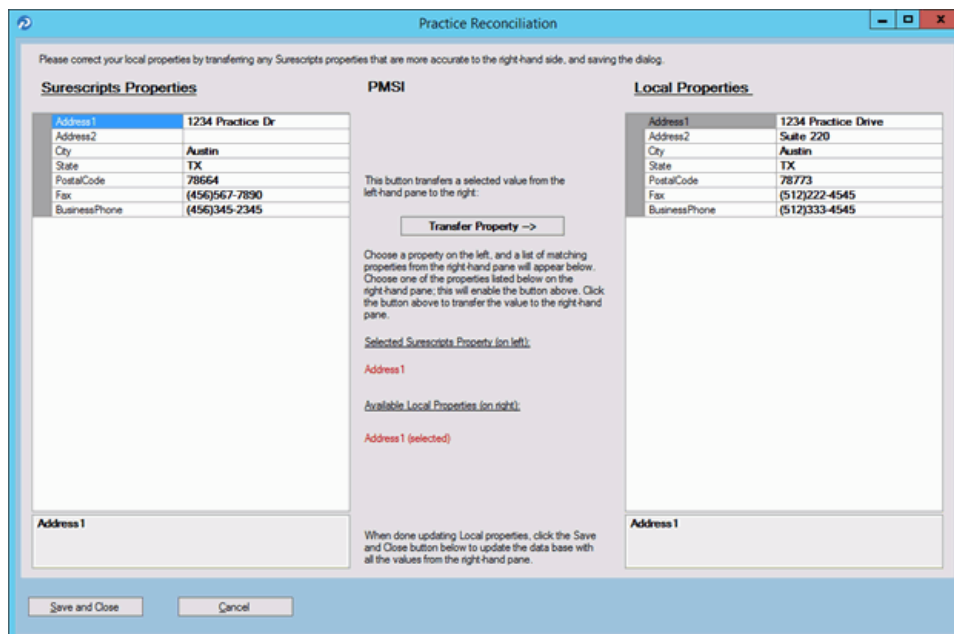


Figure 38. Practice Reconciliation screen

The following table describes the grids/fields on this screen.

Grid/field	Description
Surescripts Properties	This grid displays the demographic data associated with the practice in Surescripts.
Local Properties	This grid displays the demographic data of the practice in Lytec MD.
Selected Surescripts Property	This field displays the value that currently is selected in the Surescripts Properties grid.
Available Local Properties	This field displays each Local Properties value that is available to transfer the Surescripts data to replace in Lytec MD.

5. Select a value in the **Surescripts Properties** grid and an available field in the **Local Properties** grid and click the **Transfer Property** button to copy the Surescripts value to the Local Properties.

NOTE: If the selected **Local Properties** value is not one of the 'available local properties' for the selected Surescripts property, nothing will happen when you click the **Transfer Property** button.

You also can update the **Local Properties** fields manually by clicking in the field and typing a value.

6. When you are finished reconciling the practice data, click the **Save and Close** button to save the updates and return to the Surescripts Practices screen.
7. Repeat steps 4-6 for each practice that needs reconciling.
8. When you are finished reconciling all practice data, click the **Save and Close** button on the Surescripts Practices screen. The Surescripts Prescribers screen appears. This screen displays all Lytec MD providers whose data differs from the data recorded in Surescripts. If no

providers are found who require reconciliation, then this screen will not display and you can skip to step 14.

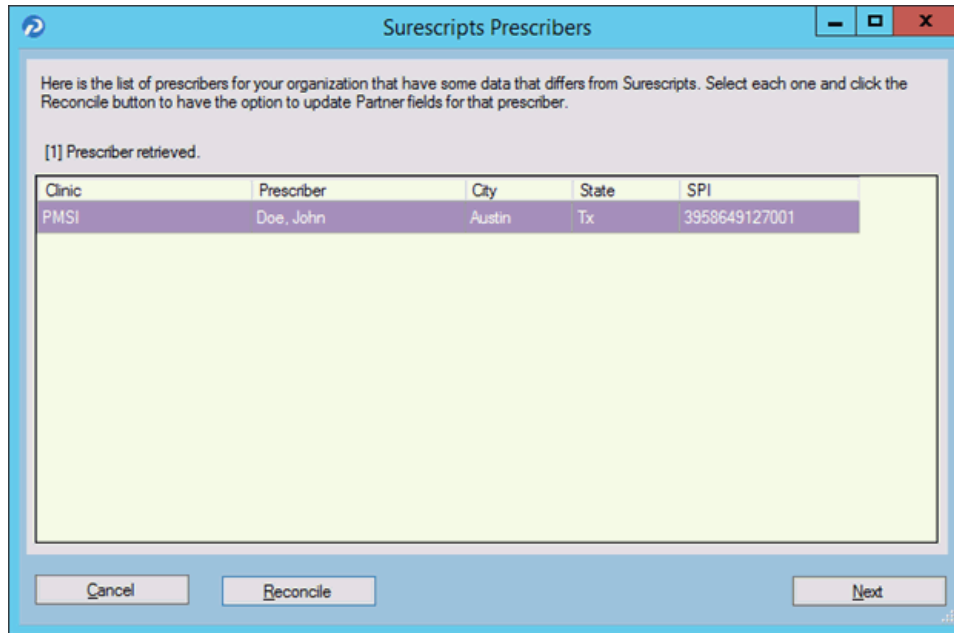


Figure 39. Surescripts Prescribers screen

- Highlight a prescriber and click the **Reconcile** button. The Prescriber Reconciliation screen appears.

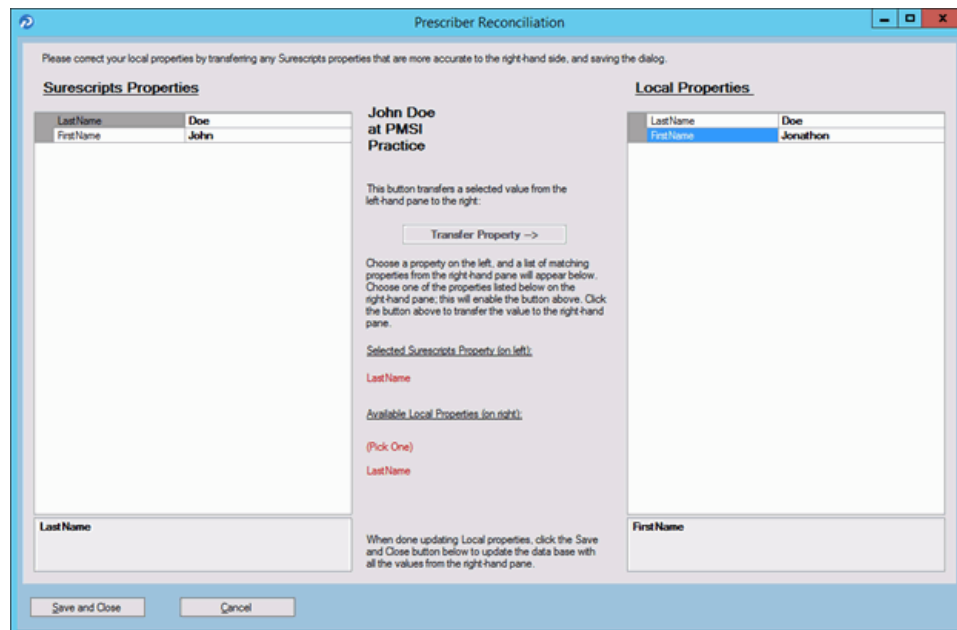


Figure 40. Prescriber Reconciliation screen

The following table describes the grids/fields on this screen.

Grid/field	Description
Surescripts Properties	This grid displays the demographic data associated with the prescriber in Surescripts.
Local Properties	This grid displays the demographic data of the provider in Lytec MD.
Selected Surescripts Property	This field displays the value that currently is selected in the Surescripts Properties grid.
Available Local Properties	This field displays each Local Properties field that is available to transfer the Surescripts data to replace in Lytec MD.

10. Highlight a value in the **Surescripts Properties** grid and an available field in the **Local Properties** grid and click the **Transfer Property** button to copy the Surescripts value to the Local Properties.

NOTE: If the selected **Local Properties** value is not one of the 'available local properties' for the selected Surescripts Property, nothing will happen when you click the **Transfer Property** button.

You also can update the **Local Properties** fields manually by clicking in the field and typing a value.

11. When you are finished reconciling the prescriber data, click the **Save and Close** button to save the updates and return to the Surescripts Prescribers screen.
12. Repeat steps 9-11 for each prescriber who needs reconciling.

13. When you are finished reconciling all prescriber data, click the **Save and Close** button on the Surescript Prescribers screen. The Register With eMDs Prescribe screen appears again.

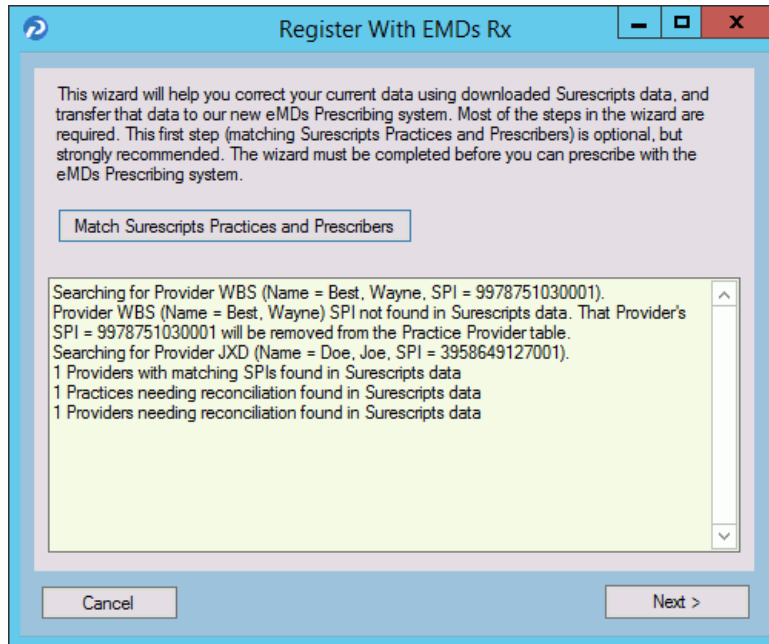


Figure 41. Register With eMDs Rx screen

NOTE: Any issues with the data reconciliation must be resolved before continuing with the next step.

14. Click the **Next** button. Your customer and practices will be registered with eMDs Prescribe. The Register Organizations for eMDs Prescribe screen appears with the results of the registration process.

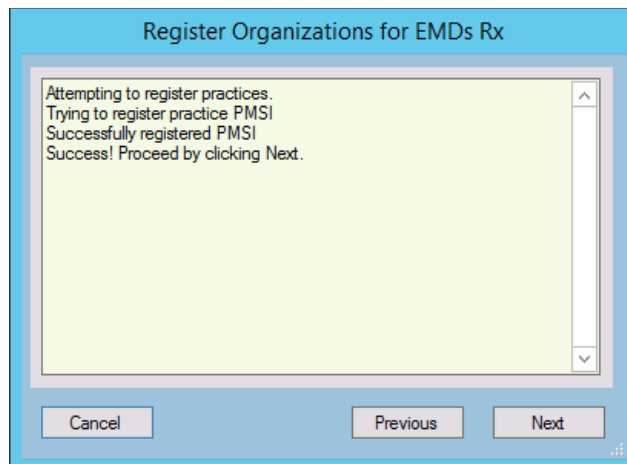


Figure 42. Register Organizations for eMDs Rx screen

15. Click the **Next** button. The Prescriber Migration screen appears and displays the total number of providers who you have affiliated with practices at your customer and the number of providers who need to be migrated.

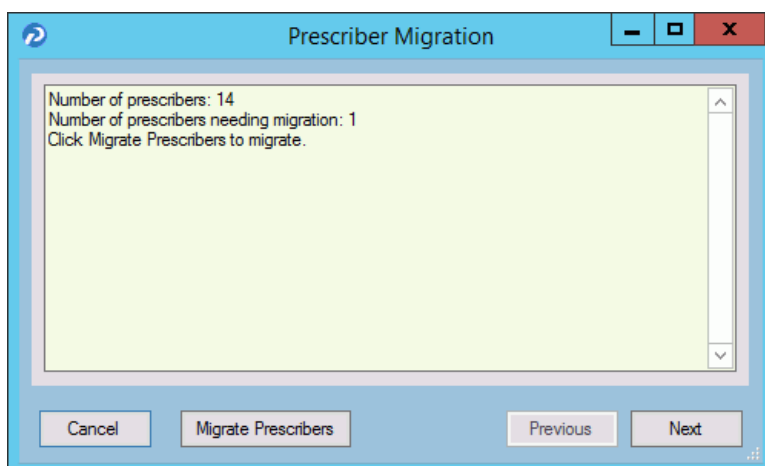


Figure 43. Prescriber Migration screen

16. Click the Migrate Prescribers button to migrate the prescribers. The results of the migration display on the Prescriber Migration screen.

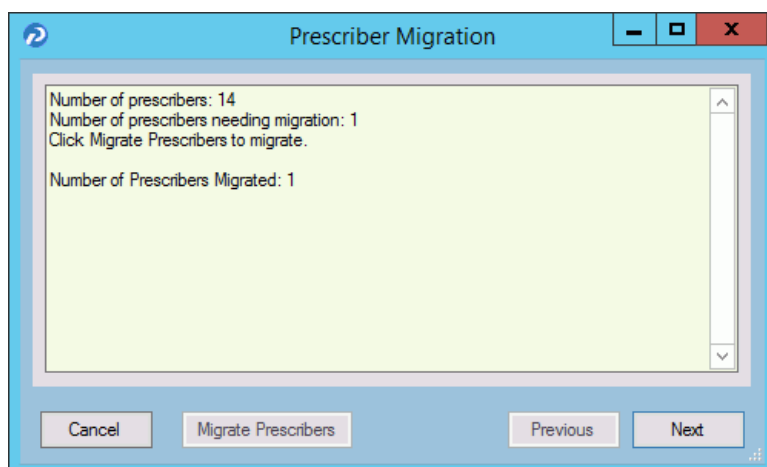


Figure 44. Prescriber Migration screen

If you encounter an error that states 'Change/Refill service already assigned to spi: ####', note the SPI number listed in the error message. This error is caused by a conflict of address information in Surescripts for the prescriber. Close and restart the utility and click the **Next** button to return to the Prescriber Migration screen and finish migrating your prescribers. This prescriber will be registered and will be allowed to prescribe; however, the prescriber still will

have conflicting address information in Surescripts. Contact Technical Services the day after the migration completes with the SPI number to get the conflicting address data corrected.

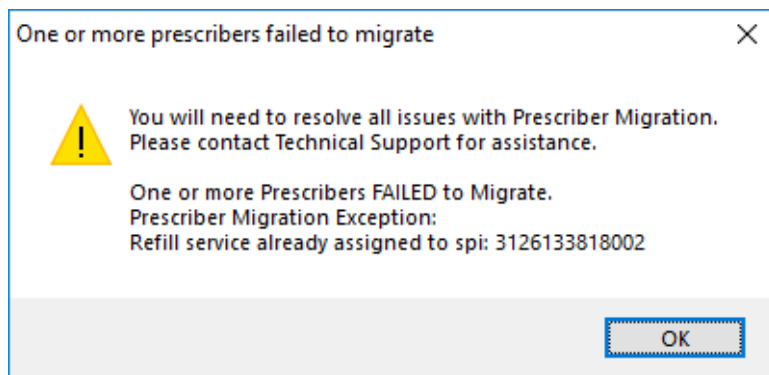


Figure 45. 'One or more prescribers failed to migrate' error message - with SPI number

If you encounter any other error, review the cause of the error and then close the utility. Log into Lytec MD and resolve the issue. Once the issue is resolved, you can restart the utility and click the **Next** button to return to the Prescriber Migration screen, where you can finish migrating your prescribers. Contact Technical Services if you need assistance.

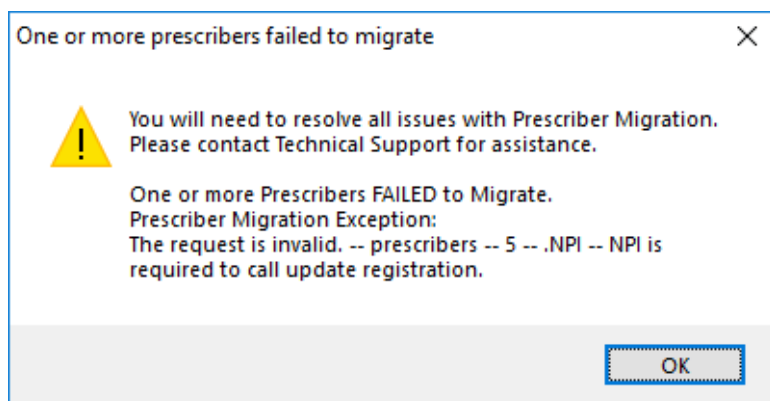


Figure 46. 'One or more prescribers failed to migrate' error message

- Click the **Next** button. The Pharmacy Migration screen appears and displays the number of custom pharmacies associated with patients in Lytec MD.

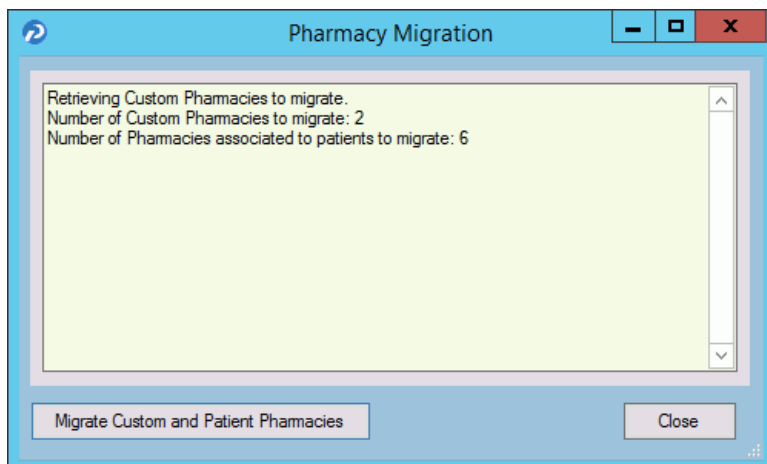


Figure 47. Pharmacy Migration screen

- Click the **Migrate Pharmacies** button to migrate the custom pharmacies. The results of the migration display on the Pharmacy Migration screen.

NOTE: This migration process can take several hours to complete, but your normal work activities can continue during this time.

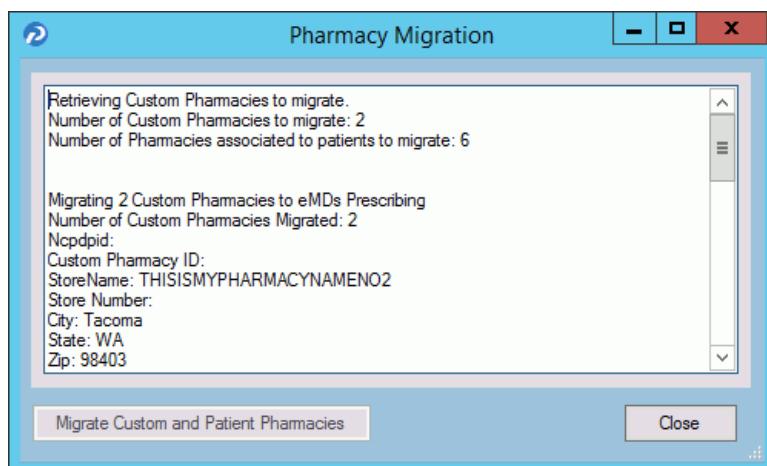


Figure 48. Pharmacy Migration screen

19. Click the **Close** button. The Migration Activity Report appears.

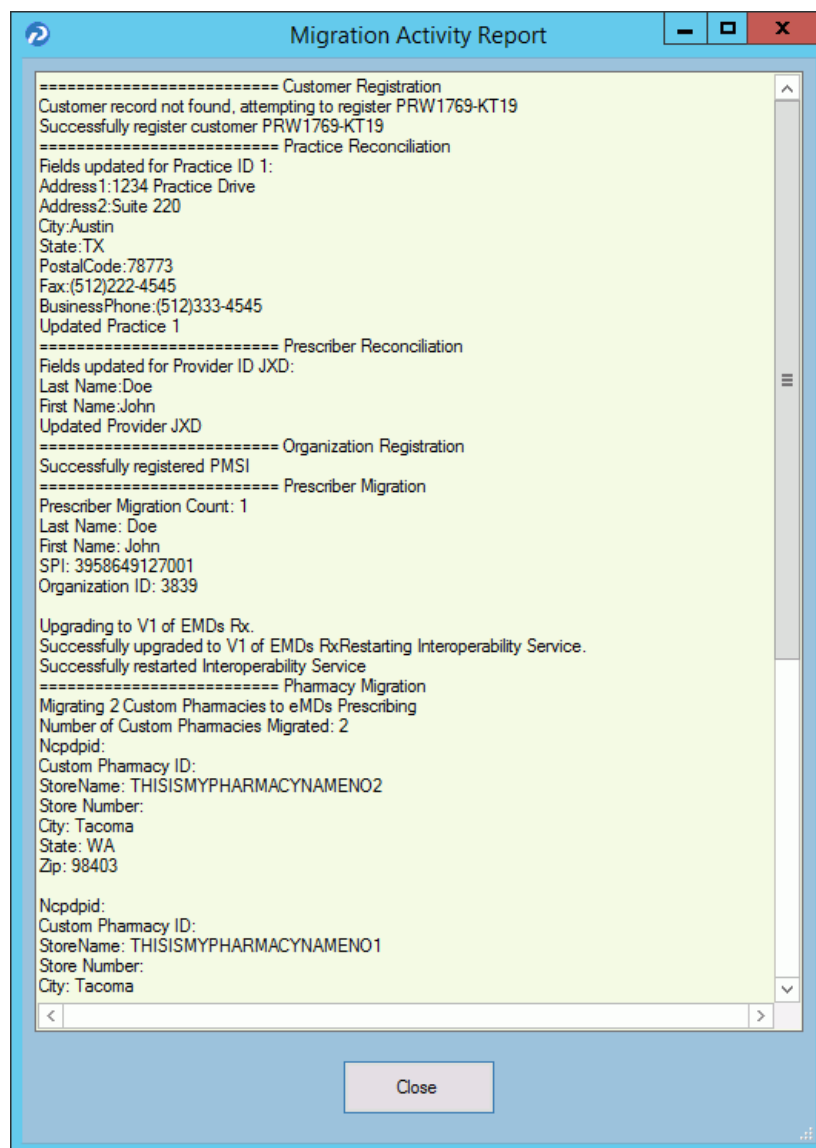


Figure 49. Migration Activity Report

20. Click the **Close** button to close the wizard.

NOTE: If you encounter any issues during the registration process, review the **RegisterWithEmdsRx.log** file in the ppart folder.

Set the **PrescriberManagementAdministrators=** setting in the ppart.ini file

The **PrescriberManagementAdministrators=** setting controls which users receive the EPCS Audit report. The default setting is

PrescriberManagementAdministrators=UsePrescriberManagement, which will send the EPCS Audit report to all users who have the Prescriber Management access level enabled.

To send the report to only certain users, specify those users' operator names in the setting in the case in which the operator names exist in the system (this setting is case sensitive). For example, **PrescriberManagementAdministrators=ACOB, JSMITH, BBALL**. In this case, the EPCS Audit report will be sent only to users ACOB, JSMITH, and BBALL.

The list of checks that this setting makes is as follows. Steps 3 and 4 are reached only if no operators have the Prescriber Management access level set.

1. List of operators in Override setting
2. Operators with Prescriber Management access level
3. Admin operator in Surescripts_Rcv.ini
4. OPID=1

Remove the PMSI.ePrescriptionConfiguration.exe utility

With release 11.2, the PMSI.ePrescriptionConfiguration.exe utility no longer is used. eMDs recommends removing this utility to avoid potential confusion.

Chapter 6 - Post Installation Setup

This chapter indicates how to specify default SQL server credentials and how to create a new practice in Lytec.

Important: Make sure to review the Patch Release Notes documents for any necessary database changes. The Patch Release Notes documents are available on Salesforce.

Specifying the Default SQL Server Credentials

After you have installed Lytec, you will need to specify the default SQL credentials. Lytec does not install or control the SQL instance. Instead, it uses an existing one by being given the credentials to the instance.

1. Start Lytec. The Specify Default SQL Credentials screen appears.

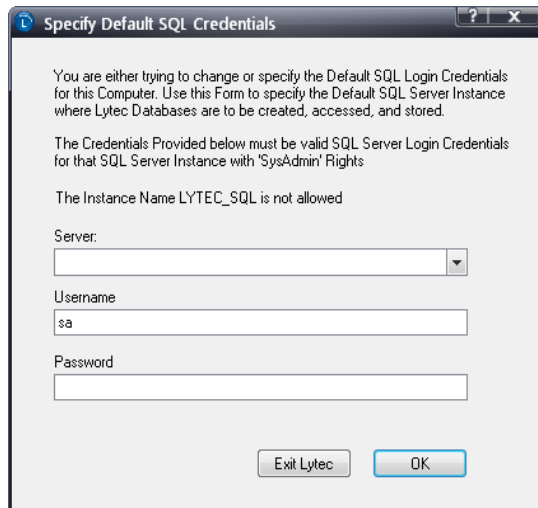


Figure 50. Specify Default SQL Credentials screen

2. Select the server and instance name that was specified in the SQL Server Setup step during installation. The default Username is sa.
3. Click the **OK** button.

New Practice

1. On the Lytec button, select **New Practice**. The New Practice screen appears.
2. Enter the following information in the screen:

Field	Description
Practice Name	Enter a name for the practice.

Field	Description
SYSTEM Password	Enter a password for the SYSTEM user. This password must be at least seven characters long and contain both alpha and numeric characters (for instance, SYSTEM1).
Confirm Password	Reenter the SYSTEM password.

3. Click the **OK** button to create the practice. The Log In screen appears.
4. Enter **SYSTEM** as the user code and the SYSTEM Password created in Step 2.
5. Click the **OK** button to open the new practice.

Appendix A - Uninstalling SQL Management Studio Express 2005

If you have version 2005 installed, you will need to uninstall it prior to starting the installation of Lytec.

To uninstall this program:

1. **Start**, point to Control Panel, and double-click **Add or Remove Programs**.
2. In the list of installed programs, click **Microsoft SQL Server Management Studio Express**, and then click **Remove**.
3. Click the **Yes** button on the warning screen. The program is uninstalled.

Appendix B - Setting Permissions for the Lytec MD Root Drive and Folders

Workstations and users must have full access to the root drive and folders where the Practice Partner files are stored.

1. On the server, double-click the **My Computer** icon or select **Start** and then **Computer**.
2. Right-click on the drive set up for Lytec MD Server/Practice Partner (typically P:) and select **Properties**.
3. Select the Sharing tab and click **Advanced Sharing**.
4. Select the **Share this folder** check box and specify the Share name (typically P).

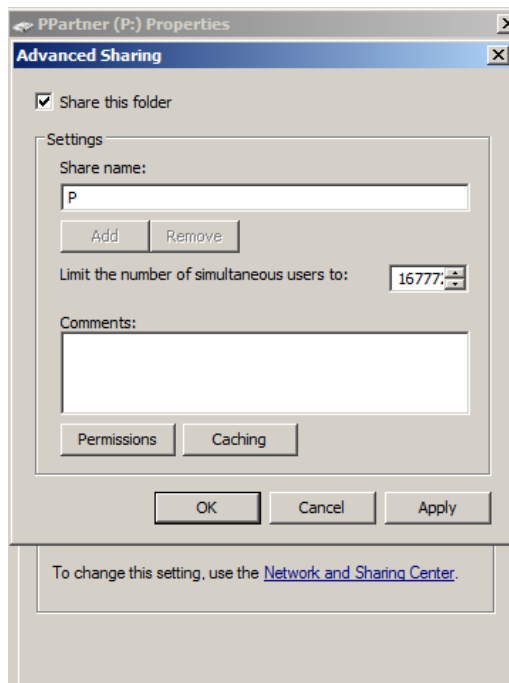


Figure 51. Advanced Sharing screen on Sharing tab

5. Click the **Permissions** button. On the Permissions screen, click **Add** and type USERS in the Enter the object names to select box.
6. Click **OK**.
7. Repeat this process and create a SYSTEM user and a DOMAIN USER (if you are on a domain; If there is no domain, you might get a message telling you so).

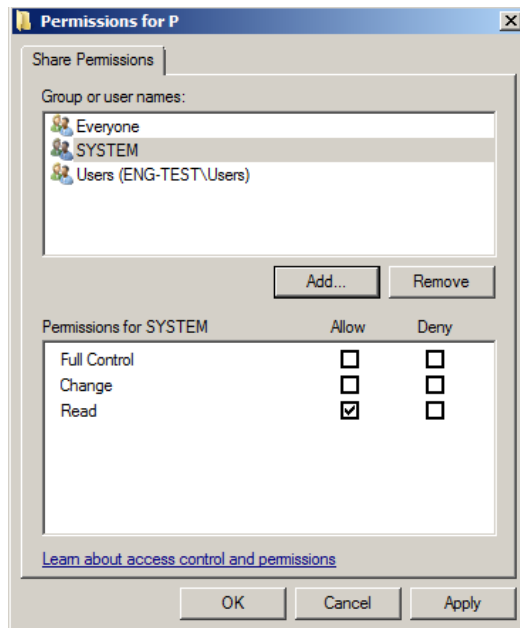


Figure 52. Permissions tab

- On the Permissions screen, select each user from the Group or user names box and then click **Allow** for **Full Control** in the Permissions for... box.

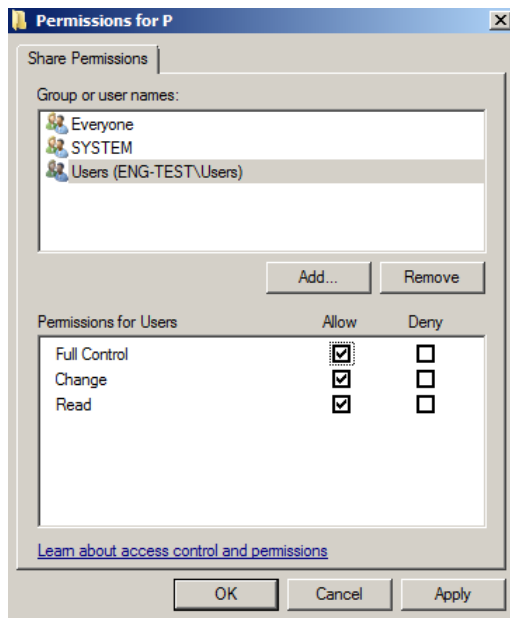


Figure 53. Permissions tab Full Allow

- Click **OK** twice to return to the Properties screen.
- Click the **Security** tab.
- Highlight Everyone and click **Edit**.

12. On the Permissions screen, select the **Allow** check box for Full Control.

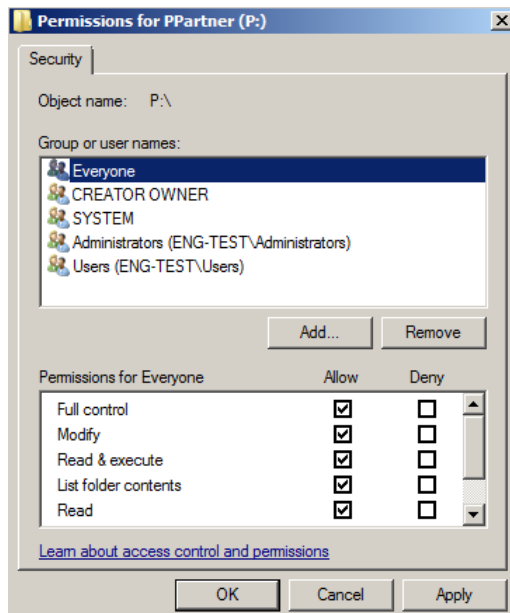


Figure 54. Permissions tab Allow for Full Control

13. Highlight SYSTEM, Users, and Domain (if necessary) and select the **Allow** check box for Full control. When you are done, click **OK**.
14. Click **Close** on the Properties screen and close My Computer.

Appendix A - Add-Ons

Your Lytec MD DVD comes with six add-on applications that can enhance the capabilities of Lytec MD. These add-Ons are

Add-On	Description
ePrescribing	Use ePrescribing to send and receive prescription-related messages to and from pharmacies, to view real-time pharmacy benefits and eligibility data on your patients, to see up-to-date formulary and coverage information for specific drugs during the prescribing process, and to view information about prescriptions your patients have had filled, even from other providers
Templates	Use templates to save time by eliminating the need to type up routine tasks.
PPConnect	Use PPConnect to add and update information from a third-party system into Practice Partner Patient Records and Appointment Scheduler, as well as Practice Partner to a third-party system.
Remote Client Connect	Use Remote Client Connect to run interfaces on client workstations.
LabCorp	Use LabCorp to receive patient lab results and send orders created in Patient Records to the lab.

Installing Add-Ons

To install an Add-On:

1. Insert the Lytec MD DVD in the drive. The Autorun screen appears. If the Autorun screen does not appear automatically, click **Start** and select **Run**. The Run screen appears. On the Run screen in the Open field, type X:\AUTORUN (where X is your DVD-ROM drive letter) and click the **OK** button.
2. Click the **Lytec MD Add-Ons** link. A list of Add-Ons appears.
3. Click the link for the Add-On you want to install. The installer starts.
4. Follow the installation wizard for the Add-On.

Appendix A - McKesson Practice Interface Center

McKesson Practice Interface Center (MPIC) is an application that is installed and configured independently of Lytec. It will transmit data from Lytec to other applications. You can use MPIC to link Lytec to Practice Partner, and eMDs Practice Choice.

Use the table to determine which version of MPIC to download:

If your server is...	Use this link:
32-Bit	http://www.lytec.com/MPIC/V2/MPIC-Setup-32bit-2.2.2.32.exe
64-Bit	http://www.lytec.com/MPIC/V2/MPIC-Setup-64bit-2.2.2.32.exe

eMDs recommends that you download and open the MPIC User's Guide prior to installing or configuring MPIC.

Index

A

Active Directory infrastructures [10](#)
Add-Ons
 installing [65](#)
anti-virus solutions [10](#)
application folder [10](#)

B

backups [10](#)
best practices [10](#)

C

client/server
 server installation and setup [24](#)
 workstation installation and setup [27](#)
client/server hardware and software requirements [5](#)
client/server installation [23](#)

D

databases
 Oracle [10](#)
 SQL [10](#)
DNS [11](#)
domain controller
 installing on [29](#)
domain infrastructures [10](#)
domain name servers [11](#)
downloading
 license files [31](#)

E

EnableUA registry entry [38](#)

F

firewalls [11](#)

I

infrastructures
 Active Directory [10](#)
 domain [10](#)
installation overview [12](#)
installing
 Add-Ons [65](#)
 Clinical Quality Measures [29](#)

domain controller [29](#)

L

license files
 downloading [31](#)
Lytec MD
 workstation installation and setup [38](#)
Lytec MD installation [29](#)
Lytec MD installation checklist [29](#)

M

Microsoft security features [11](#)

N

network interface cards
 teamed [10](#)
New Technology File System [11](#)
NICs
 teamed [10](#)
NTFS [11](#)

O

Oracle database platforms [10](#)
overview
 installation [12](#)

P

professional or multi-user
 server installation and setup [18](#)
 workstation installation and setup [21](#)
professional or multi-user hardware and software
 requirements [3](#)
professional or multi-user installation [17](#)
provider mappings
 types [67](#)

R

requirements
 client/server [5](#)
 professional or multi-user [3](#)
 single user [1](#)
 software [8](#)

S

security features

 Microsoft [11](#)

servers

 White-box [11](#)

setting permissions for the Lytec MD root drive and
 folders [61](#)

single user installation [13](#)

single-user hardware and software requirements [1](#)

software requirements [8](#)

specifying the default SQL server credentials [57](#)

SQL database platforms [10](#)

SQL server credentials

 specifying [57](#)

T

types

 provider mappings [67](#)

U

UAC [30](#), [38](#)

uninstalling

 SQL Management Studio Express 2005 [59](#)

User Access Control [38](#)

W

White-box servers [11](#)

Windows pagefile [11](#)