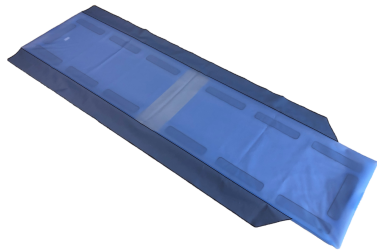


## Product Data Sheet



### CT Table Cover

Ref.:	Product name:	Dimensions:	Weight:	Packaging dimensions:
1164-B	CT Table Cover 2090	2090 x 720 x 20 mm	1330 g	750 x 450 x 60mm
1165-B	CT Table Cover 1790	1790 x 720 x 20 mm	1140 g	750 x 450 x 60mm
1166-B	CT Table Cover 2360	2360 x 720 x 20 mm	1500 g	750 x 450 x 60mm
1167-B	CT Table Cover 1860	1860 x 720 x 20 mm	1180 g	750 x 450 x 60mm
1168-B	CT Table Cover 2070	2070 x 720 x 20 mm	1320 g	750 x 450 x 60mm
1169-B	CT Table Cover 400	400 x 720 x 20 mm	350 g	750 x 450 x 60mm
1175-A	CT Table Cover 310	310 x 720 x 20 mm	320 g	750 x 450 x 60mm
1177-A	CT Table Cover 2220 S	2220 x 940 x 20 mm	1400 g	750 x 450 x 60mm

<b>Intended use</b>	Short-term patient positioning and stabilization device during invasive and non-invasive procedures to be used on intact patient's skin. Non-Sterile and not to be used in the sterile field.	
<b>Directives &amp; classification</b>	CE according to MDD – Directive 93/42/ECC and MDR – Regulation 2017/745 Class 1 product	
<b>Applied quality assurance</b>	SN EN ISO 13485:2016	
<b>Instructions for use</b>	Enclosed to the product	
<b>Restrictions of use</b>	Do not use the product for purposes other than those described.	
<b>General safety notes</b>	Non sterile. Do not sterilize. Caution: Federal law restricts this device to sale by or on the order of a licensed health-care professional (Rx only).	
<b>Materials</b>	<b>Material</b> TPU TPU/ Nylon PA LDPE Cardboard	<b>Component</b> foils textile foil hook and loop fastener packaging packaging
<b>Marking</b>	CE	
<b>Storage</b>	Store in dry place / room temperature	

Figures are subject to usual tolerances. All information to the best of our current knowledge. They do not guarantee a warranted quality and are no foundation for a contractual relationship. Errors excepted.