

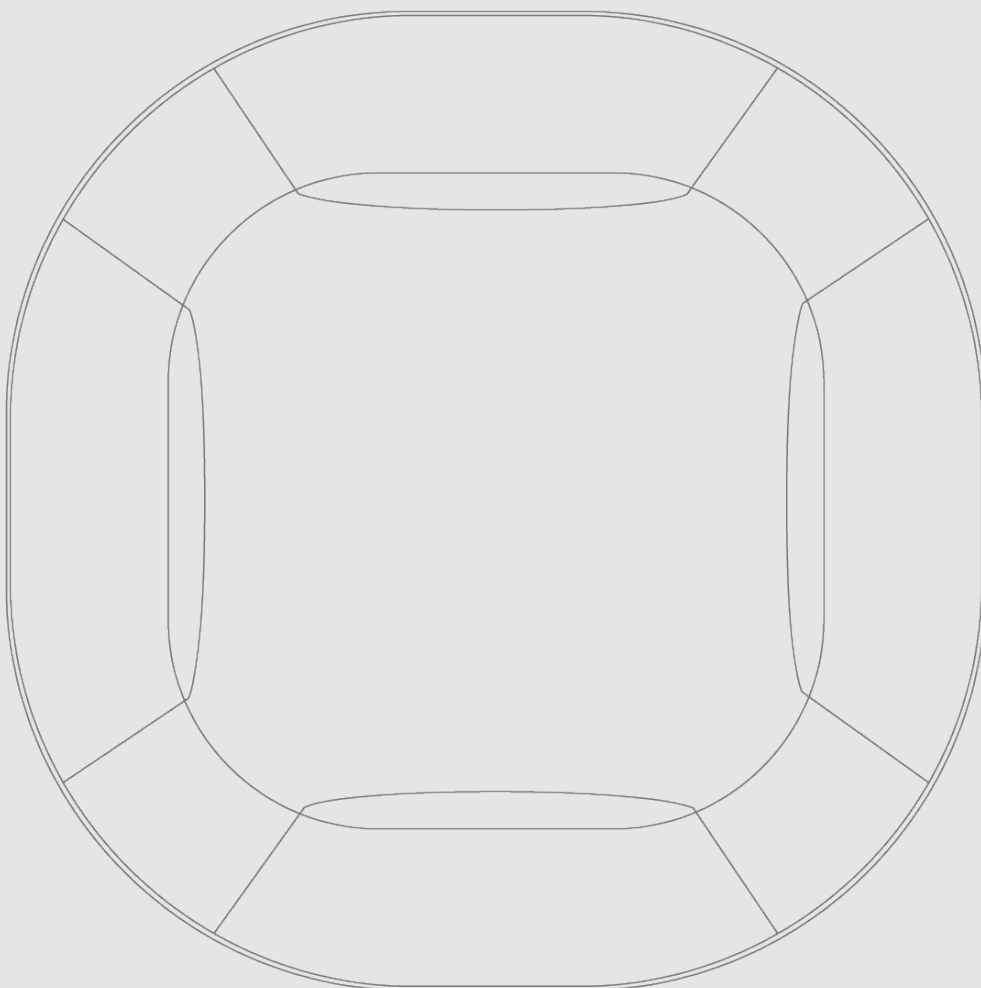
# Intelbras AP1350

## Tanaza Powered Device™

INDOOR WALL-CEILING MOUNTABLE POE

---

- 802.11ac access point
- MU-MIMO (3×3 on 2.4 GHz, 2×2 on 5 GHz)
- Dual-band
- AC1350 (450 Mbps + 867 Mbps)
- Cloud Managed



**tanaza**  
Powered device



# Intelbras

## AP1350 - Tanaza Powered Device

### 802.11ac WiFi Access Point

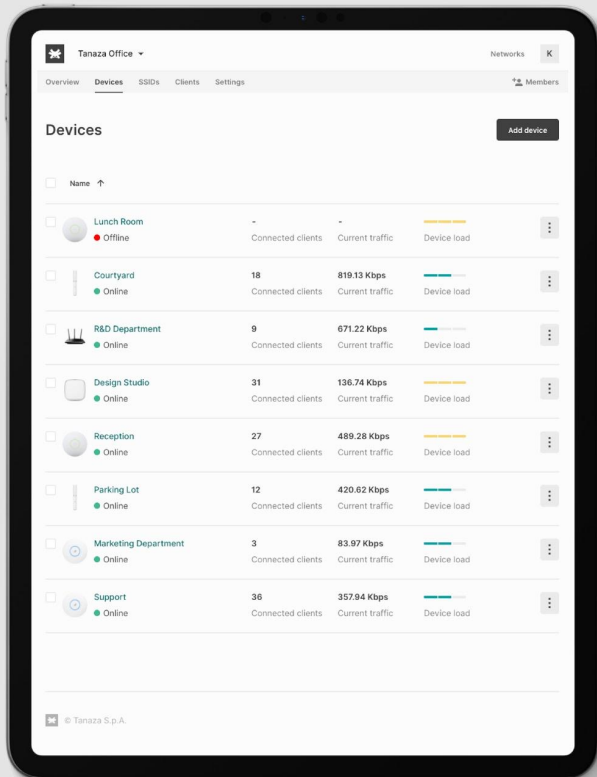
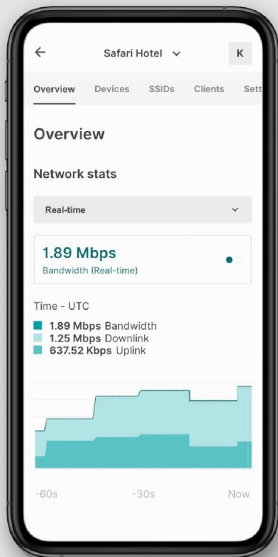
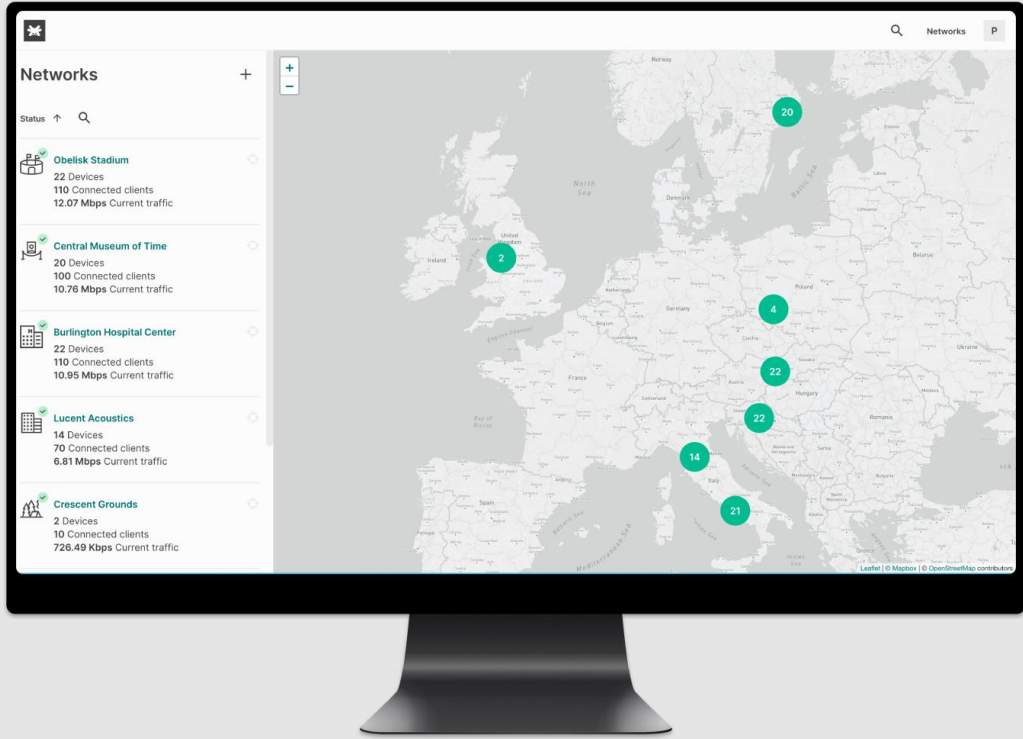
Single-band, cloud-managed MU-MIMO (3x3 on 2.4 GHz, 2x2 on 5 GHz) 802.11ac access point. Intelbras AP1350 delivers 1317 Mbps (AC1350) aggregate frame rate with concurrent 2.4 GHz and 5GHz radios.

### Cloud Managed Access Point

Intelbras AP1350 runs TanazaOS, a powerful Linux-based Operating System allowing cloud management through a browser-based intuitive interface.

## A complete feature set for businesses of any size

- MU-MIMO (3x3 on 2.4 GHz, 2x2 on 5 GHz)
- 1317 Mbps aggregate single-band frame rate (AC1350)
- Firmware update via cloud, delivering new features, bug fixes and security enhancements
- Built-in diagnostic tools for real-time remote troubleshooting
- Real-time alerts if the network encounters problems
- WPA2 and WPA2-Enterprise authentication
- Ready-to-use with Tanaza out-of-the-box (zero-touch deployment)
- Can be provisioned remotely through the multi-awarded Tanaza platform
- Integrated guest access & hotspot system with advanced WiFi analytics and WiFi marketing features



# Specifications



## Radios

2.4 GHz: 802.11b/g/n

5 GHz: 802.11a/n/ac

## 802.11ac and 802.11n Capabilities

3x3 MU-MIMO on 802.11n  
2x2 MU-MIMO on 802.11ac

20 and 40 MHz channels (802.11n)  
20, 40, and 80 MHz channels (802.11ac)

Data rate up to 450 Mbps on 2.4 GHz (64-QAM)  
Data rate up to 867 Mbps on 5GHz (256-QAM)

## Power

802.3at Power over Ethernet (PoE+)

Alternative 24V 0.5A POE Power adapter

Max power consumption: 12 W

Power over Ethernet injector sold separately.  
DC adapter included

## Flash/RAM

16 MB Flash

128 MB RAM

## Antenna

Omnidirectional antenna  
4dBi (2.4GHz) e 5dBi (5GHz)

## Environment

Operating Temperature: -10~65 °C  
Storage Temperature: -40~70 °C

## Dimensions

220 x 220 x 38 mm

## Interface

1x 10/100/1000 Mbps Base-T

1x 10/100/1000 Mbps RJ45

1x 10/100/1000 Mbps PoE

## Security

Flexible guest access with device isolation

VLAN tagging

WPA2, WPA2-Enterprise

## Roaming

802.11k/r/v

## Hardware

Intelbras AP1350

## Software

TanazaOS cloud-based Operating System



## Hardware Warranty

14 months

## Part numbers to order

Intelbras AP1350 Tanaza Powered Device

## Accessories

- CN-PL-B2 Intelbras AP1350 Access Point with EU plug
- CN-PL-D2 Intelbras AP1350 Access Point with US plug