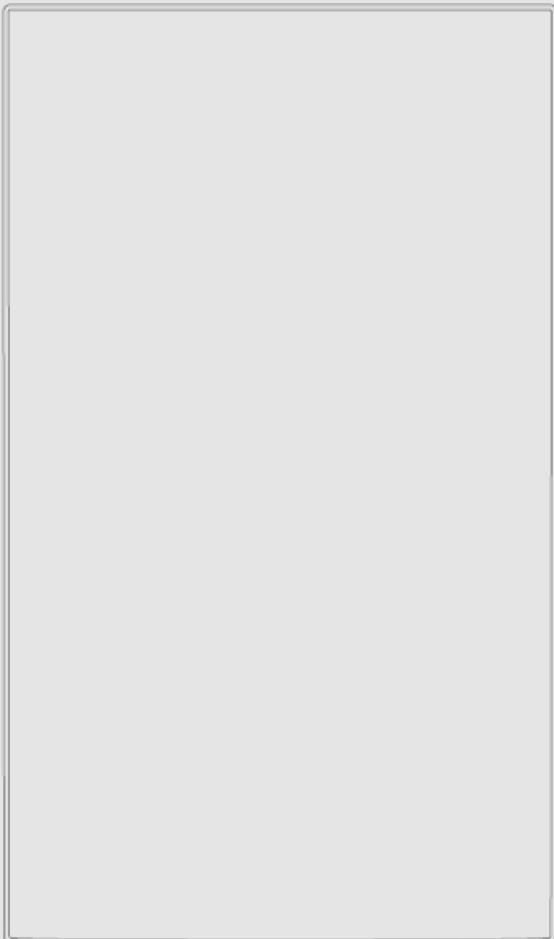


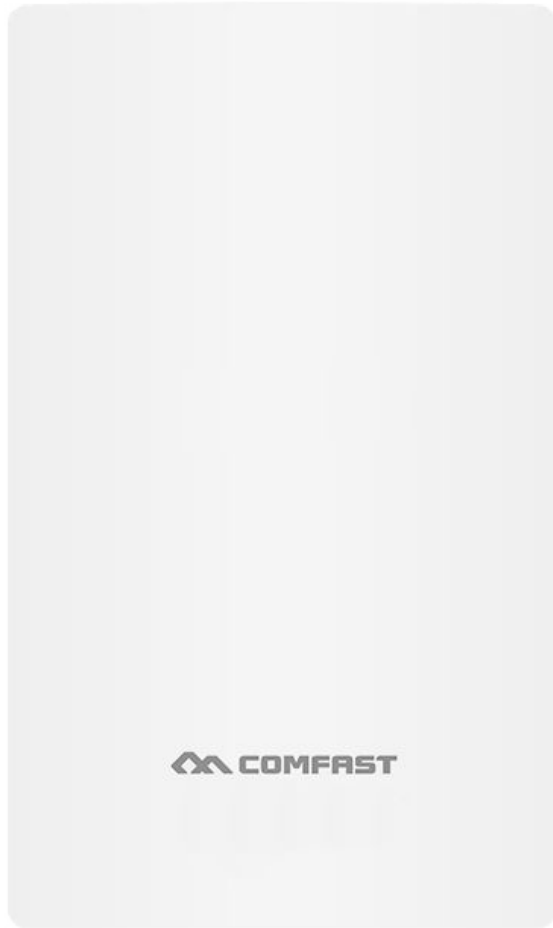
# Comfast Pulsar CF-WA350 Tanaza Powered Device™

OUTDOOR IP67 POLE-MOUNTABLE POE

---

- 802.11ac Wave 2 access point
- MU-MIMO (3×3 on 2.4 GHz, 2×2 on 5 GHz)
- Dual-band
- AC1300 (450 Mbps + 867 Mbps)
- Cloud Managed





# Comfast Pulsar

## CF-WA350 - Tanaza Powered Device

### 802.11ac WiFi Access Point

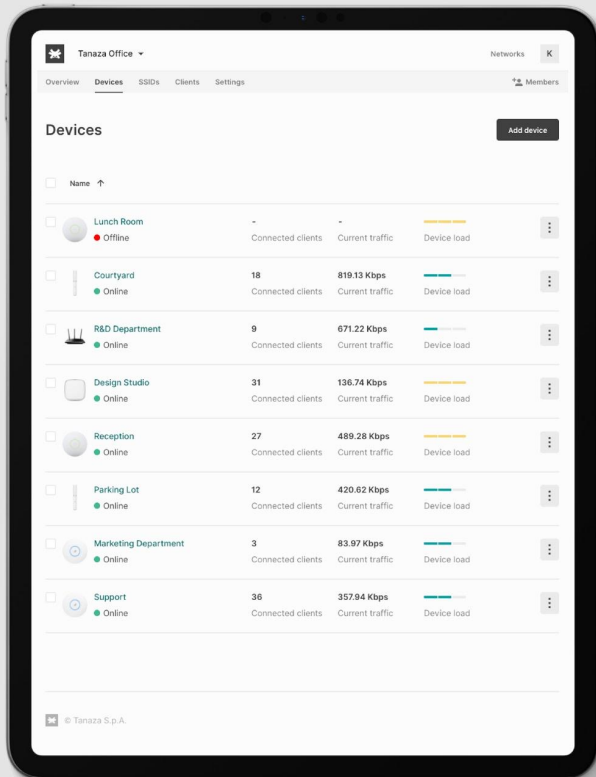
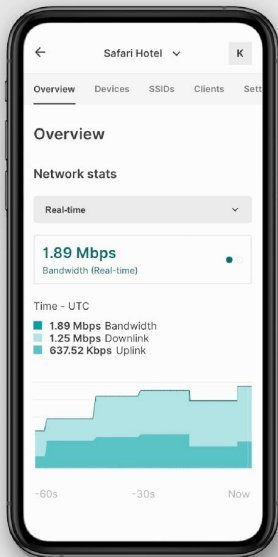
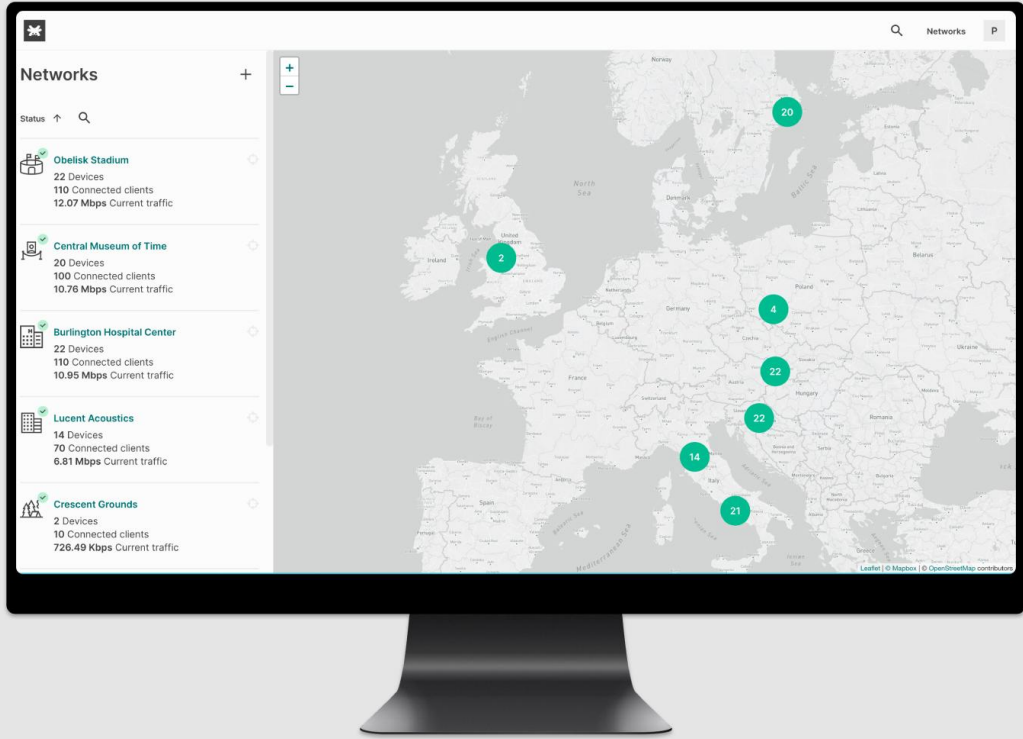
Dual-band, cloud-managed MU-MIMO (3x3 on 2.4 GHz, 2x2 on 5 GHz) 802.11ac Wave 2 access point. Comfast Pulsar CF-WA350 delivers 1.317 Gbps (AC1350) aggregate frame rate with concurrent 2.4 GHz and 5GHz radios.

### Cloud Managed Access Point

Comfast Pulsar CF-WA350 runs TanazaOS, a powerful Linux-based Operating System allowing cloud management through a browser-based intuitive interface.

## A complete feature set for businesses of any size

- MU-MIMO (3x3 on 2.4 GHz, 2x2 on 5 GHz)
- 1.317 Gbps aggregate dual-band frame rate (AC1350)
- Firmware update via cloud, delivering new features, bug fixes and security enhancements
- Built-in diagnostic tools for real-time remote troubleshooting
- Real-time alerts if the network encounters problems
- WPA2 and WPA2-Enterprise authentication
- Ready-to-use with Tanaza out-of-the-box (zero-touch deployment)
- Can be provisioned remotely through the multi-awarded Tanaza platform
- Integrated guest access & hotspot system with advanced WiFi analytics and WiFi marketing features



# Specifications



## Radios

2.4 GHz: 802.11b/g/n

5 GHz: 802.11a/n/ac Wave 2

## 802.11ac and 802.11n Capabilities

3x3 SU-MIMO on 802.11n with 3 spatial streams  
2x2 MU-MIMO on 802.11ac with 2 spatial streams

20 and 40 MHz channels (802.11n)  
20, 40, and 80 MHz channels (802.11ac)

Data rate up to 450 Mbps on 2.4 GHz (64-QAM)  
Data rate up to 867 Mbps on 5 GHz (256-QAM)

## Power

802.3at Power over Ethernet (PoE+)

Alternative 48 V DC input

Max power consumption: 20 W

Power over Ethernet injector sold separately.  
DC adapter included

## Flash/RAM

16 MB Flash

128 MB RAM

## Antenna

2.4 GHz 11 dBi directional antenna  
5 GHz 13 dBi directional antenna

## Environment

Operating Temperature: -10~65 °C  
Storage Temperature: -40~70 °C

Humidity: 5%~90% non-condensing

## Dimensions

300 x 180 x 50 mm

## Interface

1x 10/100/1000 Mbps WAN Ethernet port

1x 10/100/1000 Mbps LAN Ethernet port

## Security

Flexible guest access with device isolation

VLAN tagging

WPA2, WPA2-Enterprise

## Roaming

802.11k/r/v

## Hardware

Comfast Pulsar CF-WA350

## Software

TanazaOS cloud-based Operating System



## Hardware Warranty

14 months

## Part numbers to order

Comfast Pulsar CF-WA350 Tanaza Powered Device

## Accessories

- CN-PL-B2 Comfast Pulsar CF-WA350 Access Point with EU plug
- CN-PL-D2 Comfast Pulsar CF-WA350 Access Point with US plug