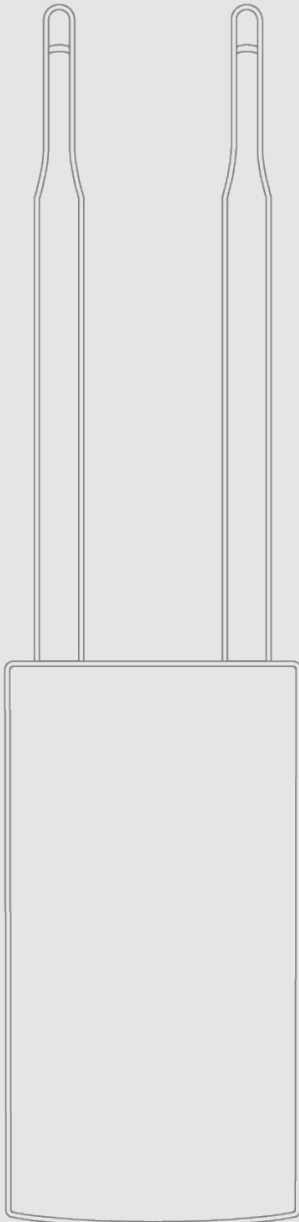


Comfast CF-EW72

Tanaza Powered Device™

OUTDOOR WALL-POLE MOUNTABLE POE

- 802.11ac access point
- SU-MIMO (2×2 on 2.4 GHz, 2×2 on 5.8 GHz)
- Dual-band
- AC1200 (300 Mbps + 867 Mbps)
- Cloud Managed





 **COMFAST**



Comfast

CF-EW72 - Tanaza Powered Device

802.11ac WiFi Access Point

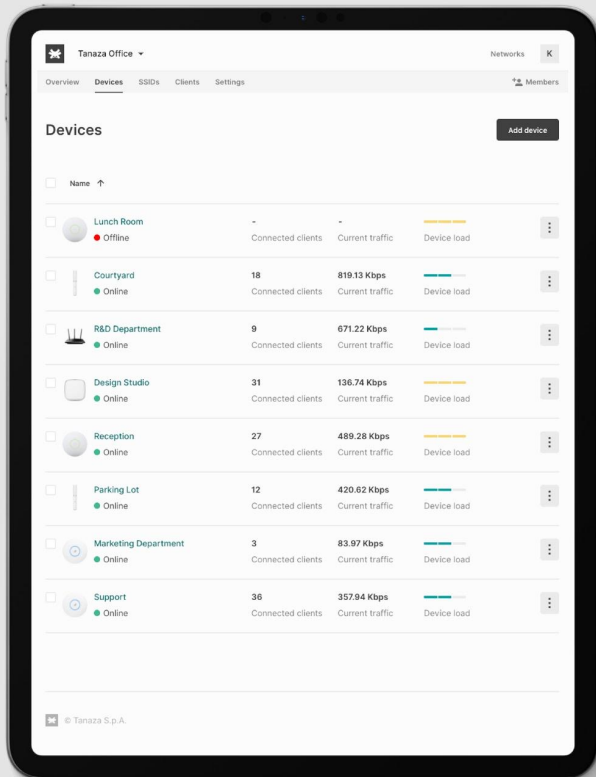
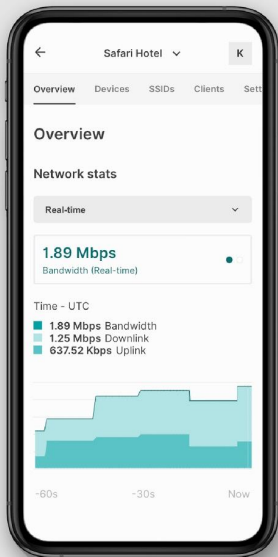
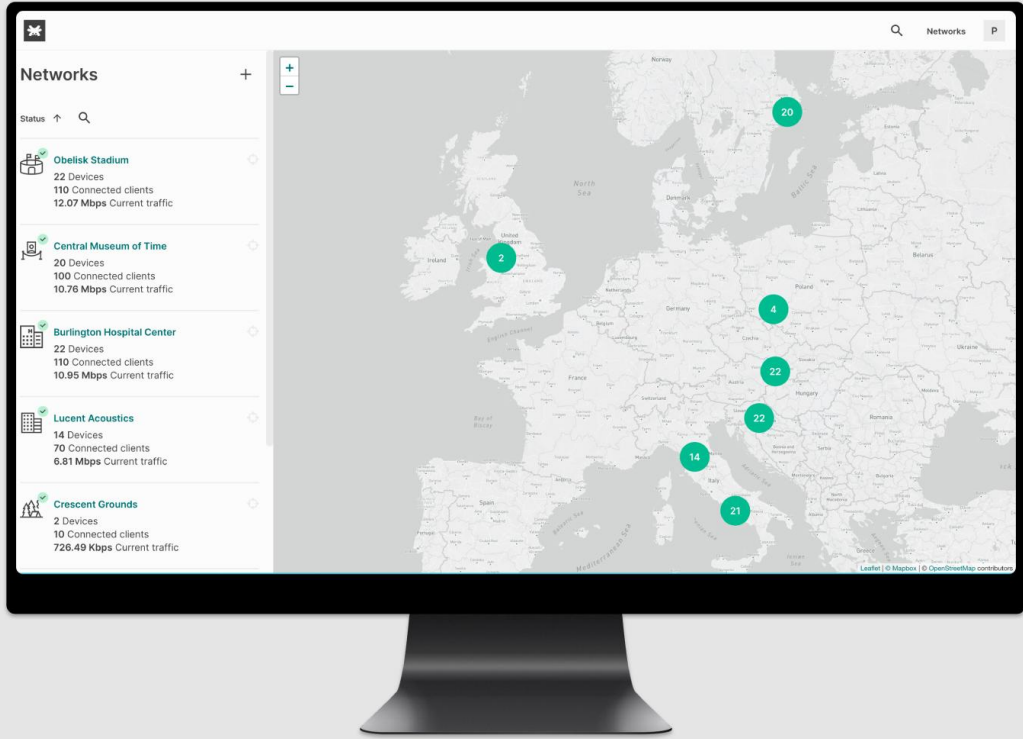
Dual-band, cloud-managed SU-MIMO (2x2 on 2.4 GHz, 2x2 on 5.8 GHz) 802.11ac access point. Comfast CF-EW72 delivers 1.167 Gbps (AC1200) aggregate frame rate with concurrent 2.4 GHz and 5GHz radios.

Cloud Managed Access Point

Comfast CF-EW72 runs TanazaOS, a powerful Linux-based Operating System allowing cloud management through a browser-based intuitive interface.

A complete feature set for businesses of any size

- SU-MIMO (2x2 on 2.4 GHz, 2x2 on 5.8 GHz)
- 1.167 Gbps aggregate dual-band frame rate (AC1200)
- Firmware update via cloud, delivering new features, bug fixes and security enhancements
- Built-in diagnostic tools for real-time remote troubleshooting
- Real-time alerts if the network encounters problems
- WPA2 and WPA2-Enterprise authentication
- Ready-to-use with Tanaza out-of-the-box (zero-touch deployment)
- Can be provisioned remotely through the multi-awarded Tanaza platform
- Integrated guest access & hotspot system with advanced WiFi analytics and WiFi marketing features



Specifications



Radios

2.4 GHz: 802.11b/g/n

5.8 GHz: 802.11a/n/ac

802.11ac and 802.11n Capabilities

2x2 SU-MIMO on 802.11n with 2 spatial streams
2x2 SU-MIMO on 802.11ac with 2 spatial streams

20 and 40 MHz channels (802.11n)
20, 40, and 80 MHz channels (802.11ac)

Data rate up to 300 Mbps on 2.4 GHz (64-QAM)
Data rate up to 867 Mbps on 5.8 GHz (256-QAM)

Power

802.3at Power over Ethernet (PoE+)

Alternative 48V 0.5A POE Power adapter

Max power consumption: 13 W

Power over Ethernet injector sold separately.
DC adapter included

Flash/RAM

16 MB Flash

128 MB RAM

Antenna

2 * 5dBi omni-directional dual polarized antennas

Environment

IP66 rating
Operating Temperature: -10~65 °C
Storage Temperature: -40~70 °C

Operating Humidity: 10%~90% RH non-condensing
Storage Humidity: 5%~90% RH non-condensing

Dimensions

353 x 85 x 44 mm

Interface

1x 10/100 Mbps WAN RJ45 Ethernet port

1x 10/100 Mbps LAN RJ45 Ethernet port

1 Reset button

Security

Flexible guest access with device isolation

VLAN tagging

WPA2, WPA2-Enterprise

Roaming

802.11k/r/v

Hardware

Comfast CF-EW72

Software

TanazaOS cloud-based Operating System



Hardware Warranty

14 months

Part numbers to order

Comfast CF-EW72 Tanaza Powered Device

Accessories

- CN-PL-B2 Comfast CF-EW72 Access Point with EU plug
- CN-PL-D2 Comfast CF-EW72 Access Point with US plug