

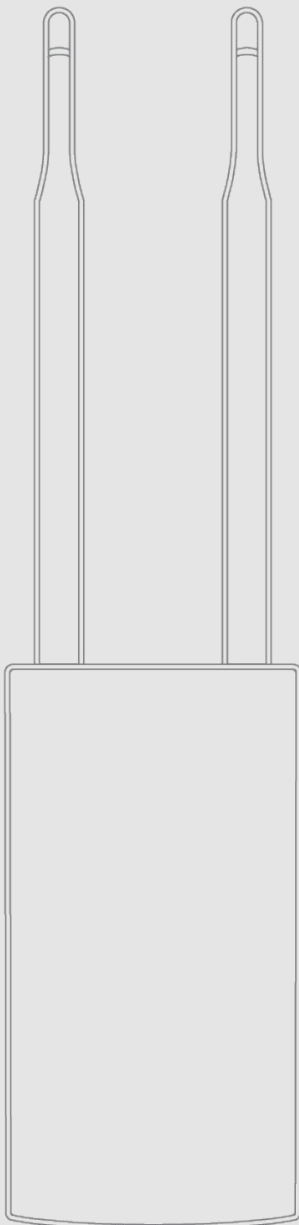
# Comfast CF-EW71

## Tanaza Powered Device™

OUTDOOR WALL-POLE MOUNTABLE POE

---

- 802.11n access point
- SU-MIMO (2×2 on 2.4 GHz)
- Single-band
- AC300 (300 Mbps)
- Cloud Managed





 **COMFAST**



**tanaza**  
Powered device

# Comfast

## CF-EW71 - Tanaza Powered Device

### 802.11n WiFi Access Point

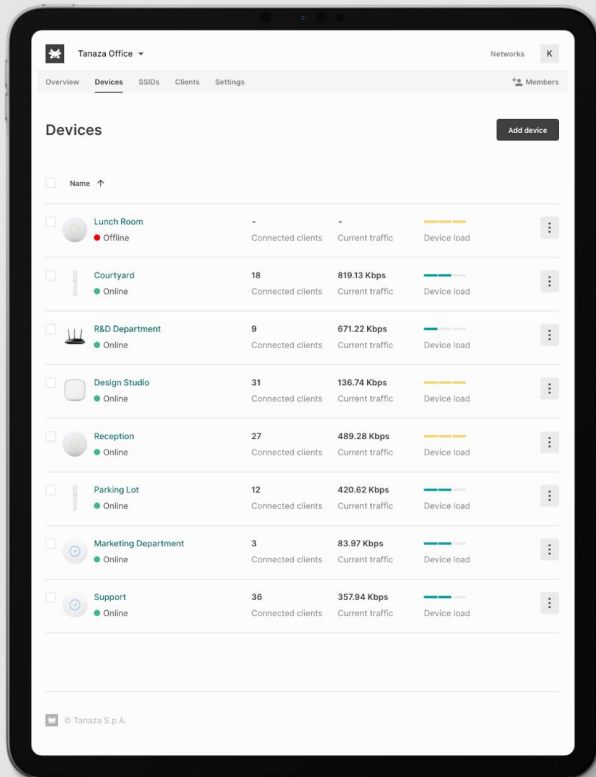
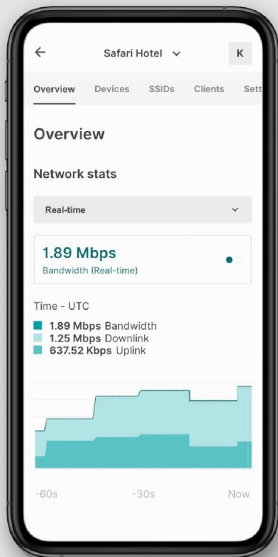
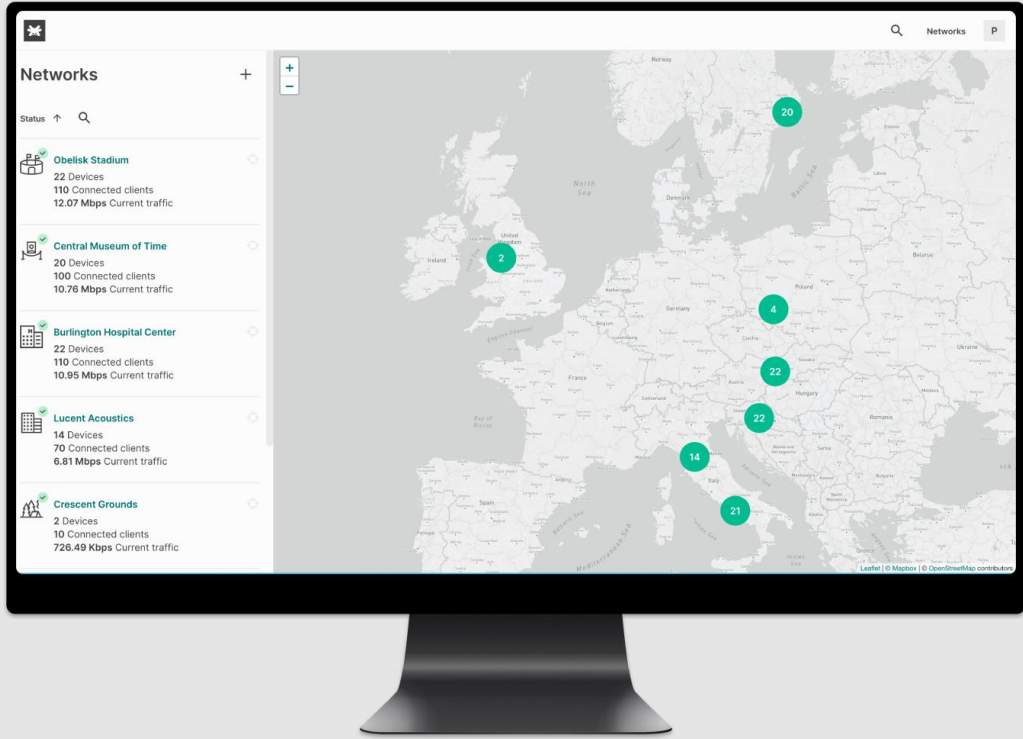
Single-band, cloud-managed SU-MIMO (2x2 on 2.4 GHz) 802.11n access point. Comfast CF-EW71 delivers 300 Mbps (AC300) aggregate frame rate with 2.4 GHz radio.

### Cloud Managed Access Point

Comfast CF-EW71 runs TanazaOS, a powerful Linux-based Operating System allowing cloud management through a browser-based intuitive interface.

## A complete feature set for businesses of any size

- SU-MIMO (2x2 on 2.4 GHz)
- 300 Mbps aggregate single-band frame rate (AC300)
- Firmware update via cloud, delivering new features, bug fixes and security enhancements
- Built-in diagnostic tools for real-time remote troubleshooting
- Real-time alerts if the network encounters problems
- WPA2 and WPA2-Enterprise authentication
- Ready-to-use with Tanaza out-of-the-box (zero-touch deployment)
- Can be provisioned remotely through the multi-awarded Tanaza platform
- Integrated guest access & hotspot system with advanced WiFi analytics and WiFi marketing features



# Specifications



## Radios

2.4 GHz: 802.11b/g/n

## 802.11n Capabilities

2x2 SU-MIMO on 802.11n with 2 spatial streams

20 and 40 MHz channels (802.11n)

Data rate up to 300 Mbps on 2.4 GHz (64-QAM)

## Power

802.3at Power over Ethernet (PoE+)

Alternative 48V 0.32A POE Power adapter

Max power consumption: 8 W

Power over Ethernet injector sold separately.  
DC adapter included

## Flash/RAM

16 MB Flash

64 MB RAM

## Antenna

2 \* 5dBi external antennas

## Environment

IP66 rating

Operating Temperature: -10~65 °C

Storage Temperature: -40~70 °C

Operating Humidity: 10%~90% RH non-condensing

Storage Humidity: 5%~90% RH non-condensing

## Dimensions

353 x 85 x 44 mm

## Interface

1x 10/100 Mbps WAN RJ45 Ethernet port

1x 10/100 Mbps LAN RJ45 Ethernet port

1 Reset button

## Security

Flexible guest access with device isolation

VLAN tagging

WPA2, WPA2-Enterprise

## Roaming

802.11k/r/v

## Hardware

Comfast CF-EW71

## Software

TanazaOS cloud-based Operating System



## Hardware Warranty

14 months

## Part numbers to order

Comfast CF-EW71 Tanaza Powered Device

## Accessories

- CN-PL-B2 Comfast CF-EW71 Access Point with EU plug
- CN-PL-D2 Comfast CF-EW71 Access Point with US plug