

Amer Networks WAP1000 Tanaza Powered Device™

INDOOR CEILING-MOUNTABLE POE

- 802.11ac Wave 2 access point
- 2x2 MU-MIMO
- Dual-band
- AC1600 (300 Mbps + 1300 Mbps)
- Cloud Managed





Amer Networks

WAP1000 - Tanaza Powered Device

802.11ac WiFi Access Point

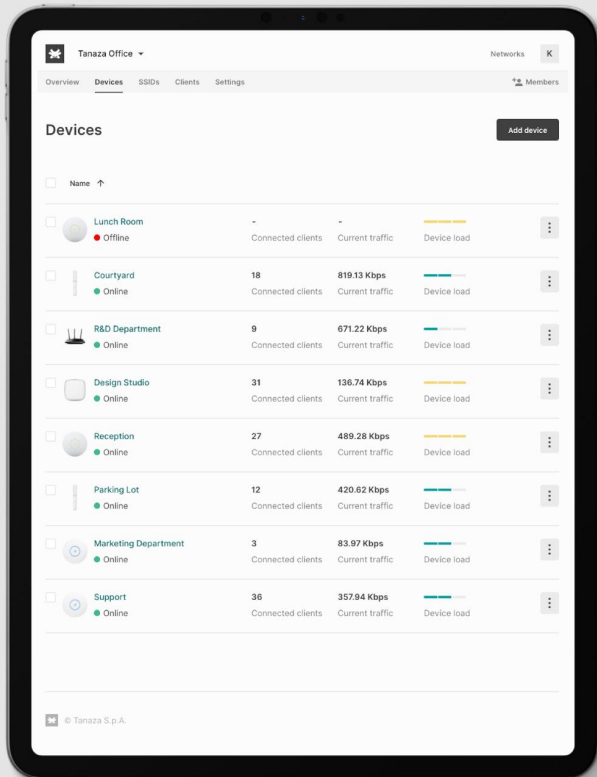
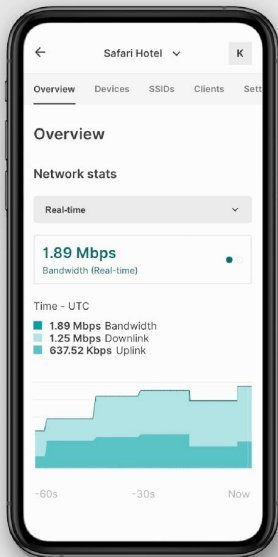
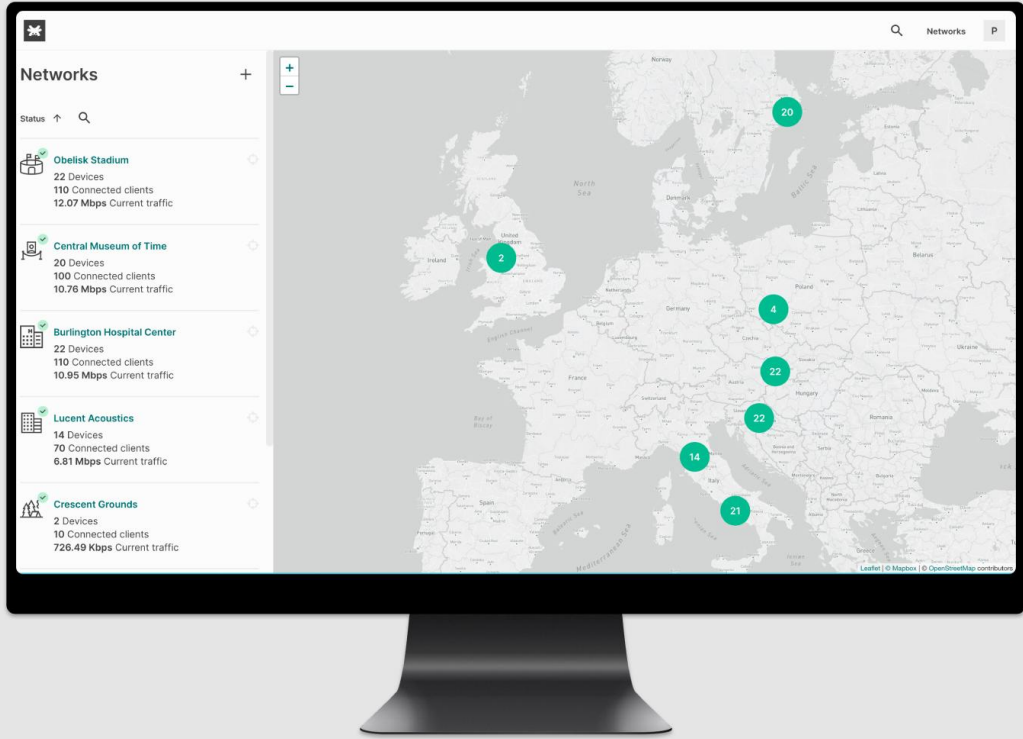
Dual-radio, cloud-managed 2x2 MU-MIMO 802.11ac Wave 2 access point. WAP1000 delivers a 1.6 Gbps aggregate frame rate (AC1600) with concurrent 2.4 GHz and 5GHz radios.

Cloud Managed Access Point

WAP1000 runs TanazaOS, a powerful Linux-based Operating System allowing cloud management through a browser-based intuitive interface.

A complete feature set for businesses of any size

- 2x2 MU-MIMO 802.11ac Wave 2
- 1.6 Gbps aggregate dual-band frame rate (AC1600)
- Firmware update via cloud, delivering new features, bug fixes and security enhancements
- Built-in diagnostic tools for real-time remote troubleshooting
- Real-time alerts if the network encounters problems
- WPA2 and WPA2-Enterprise authentication
- Ready-to-use with Tanaza out-of-the-box (zero-touch deployment)
- Can be provisioned remotely through the multi-awarded Tanaza platform
- Integrated guest access & hotspot system with advanced WiFi analytics and WiFi marketing features



Specifications



Radios

2.4 GHz: 802.11b/g/n

5 GHz: 802.11a/n/ac

802.11ac and 802.11n Capabilities

2x2 MIMO on 802.11n with 2 spatial streams
2x2 MU-MIMO on 802.11ac with 2 spatial streams

20 and 40 MHz channels on 802.11n
20, 40, and 80 MHz channels on 802.11ac

Data rate up to 300 Mbps on 2.4 GHz (64-QAM)
Data rate up to 1600 Mbps on 5 GHz (256-QAM)

Power

802.3af/at Power over Ethernet (PoE+)

Alternative +5V~30V DC input

Max power consumption: 13 W

Power over Ethernet injector and DC adapter sold separately

Flash/RAM

16 MB Flash

128 MB DDR3 RAM

Antenna

Built in 2.4 GHz 4 dBi antenna and 5 GHz dBi antenna.

Environment

Operating Temperature: -10 °C~55 °C
Storage Temperature: -20°C~70 °C

Humidity: 10%~90% non-condensing

Dimensions

215 x 215 x 43 mm

Interface

1x 10/100/1000 Mbps RJ-45 port

1x 10/100/1000 Mbps RJ-45 port

Security

Flexible guest access with device isolation

VLAN tagging

WPA2, WPA2-Enterprise

Roaming

802.11k/r/v

Hardware

Amer Networks WAP1000

Software

TanazaOS cloud-based Operating System



Hardware Warranty

36 months

Part numbers to order

Amer Networks WAP1000 Tanaza Powered Device

Accessories

- CN-PA-A1 Power adapter DC with EU plug
- CN-PA-B1 Power adapter PoE with EU plug
- CN-PA-C1 Power adapter DC with US plug
- CN-PA-D1 Power adapter PoE with US plug