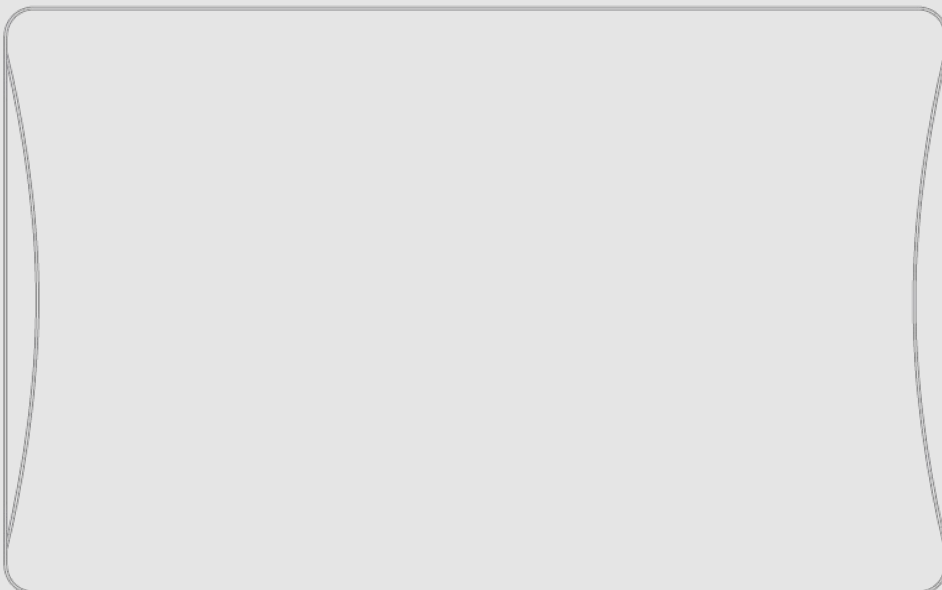


# Amer Networks DataCloudNode3 Tanaza Powered Device™

INDOOR CEILING-MOUNTABLE POE

---

- 802.11ac Wave 2 access point
- 4x4 MU-MIMO
- Dual-band
- AC2100 (300 Mbps + 1733 Mbps)
- Cloud Managed





# Amer Networks

## DataCloudNode3 R2

### Tanaza Powered Device

#### 802.11ac WiFi Access Point

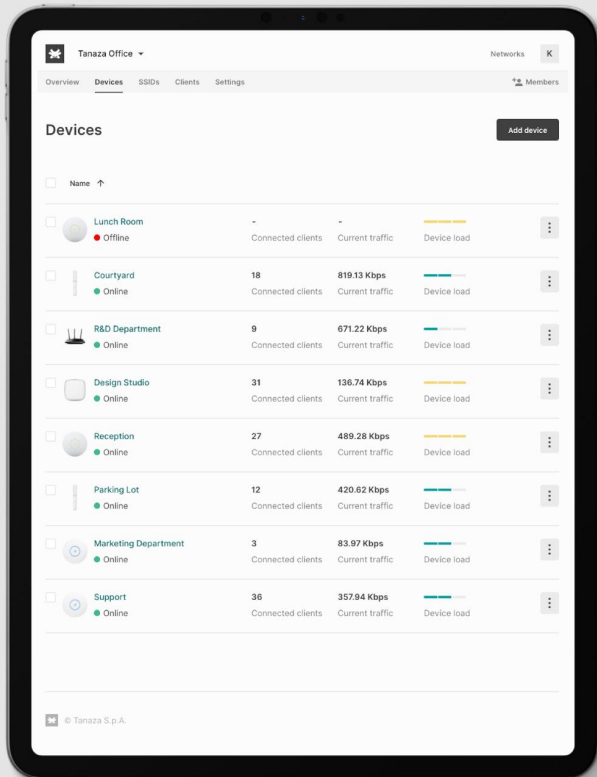
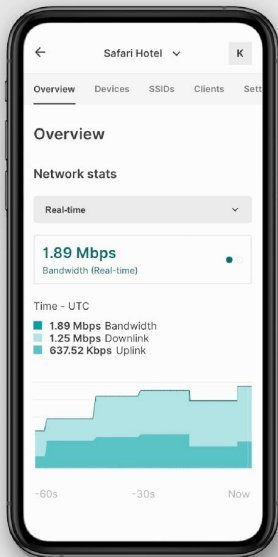
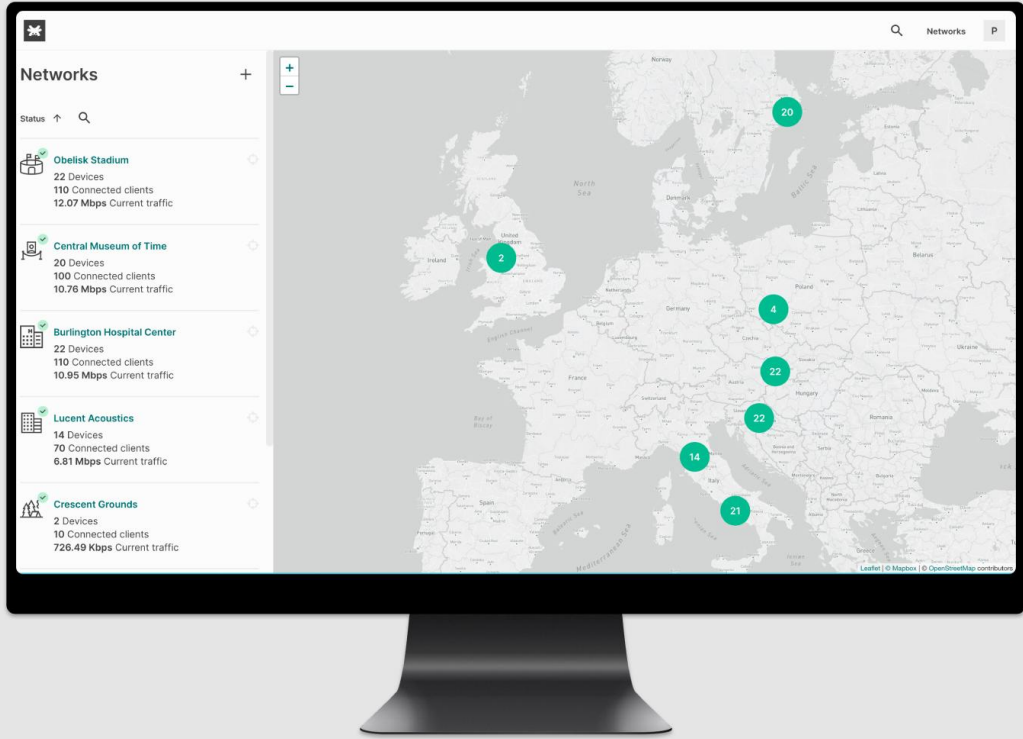
Three-band, cloud-managed 4x4 MU-MIMO 802.11ac Wave 2 access point. DataCloudNode3 R2 delivers 2.033 Gbps (AC2100) aggregate frame rate with concurrent 2.4 GHz and 5GHz radios.

#### Cloud Managed Access Point

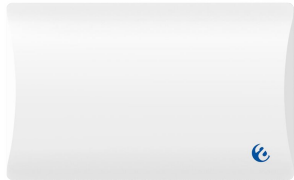
DataCloudNode3 R2 runs TanazaOS, a powerful Linux-based Operating System allowing cloud management through a browser-based intuitive interface.

## A complete feature set for businesses of any size

- 4x4 MU-MIMO 802.11ac Wave 2
- 2.033 Gbps aggregate dual-band frame rate (AC2100)
- Firmware update via cloud, delivering new features, bug fixes and security enhancements
- Built-in diagnostic tools for real-time remote troubleshooting
- Real-time alerts if the network encounters problems
- WPA2 and WPA2-Enterprise authentication
- Ready-to-use with Tanaza out-of-the-box (zero-touch deployment)
- Can be provisioned remotely through the multi-awarded Tanaza platform
- Integrated guest access & hotspot system with advanced WiFi analytics and WiFi marketing features



# Specifications



## Radios

2.4 GHz: 802.11b/g/n

5 GHz: 802.11a/n/ac Wave 2

## 802.11ac and 802.11n Capabilities

2x2 MIMO on 802.11n with 2 spatial streams  
4x4 MU-MIMO on 802.11ac with 4 spatial streams

20 and 40 MHz channels (802.11n)  
20, 40, and 80 MHz channels (802.11ac)

Data rate up to 300 Mbps on 2.4 GHz (64-QAM)  
Data rate up to 1.733 Gbps on 5 GHz (256-QAM)

## Power

802.3at Power over Ethernet (PoE+)

Alternative 12 V DC input

Max power consumption: 18 W

Power over Ethernet injector and DC adapter sold separately

## Flash/RAM

16 MB Flash

128 MB DDR2 RAM

## Antenna

Built-in 2.4 GHz 4 dBi antenna  
Built-in 5 GHz 5 dBi antenna

## Environment

Operating Temperature: 0~50 °C  
Storage Temperature: -40~70 °C

Humidity: 5%~95% non-condensing

## Dimensions

247 x 153 x 30 mm

## Interface

1x 10/100/1000 Mbps WAN Ethernet port

1x 10/100/1000 Mbps LAN Ethernet port

1x USB 2.0 type A port

## Security

Flexible guest access with device isolation

VLAN tagging

WPA2, WPA2-Enterprise

## Roaming

802.11k/r/v

## Hardware

Amer Networks DataCloudNode3 R2

## Software

TanazaOS cloud-based Operating System



## Hardware Warranty

14 months

## Part numbers to order

Amer Networks DataCloudNode3 R2 Tanaza  
Powered Device

## Accessories

- CN-PA-A2 Power adapter DC with EU plug
- CN-PA-B2 Power adapter PoE with EU plug
- CN-PA-C2 Power adapter DC with US plug
- CN-PA-D2 Power adapter PoE with US plug